

NOTES

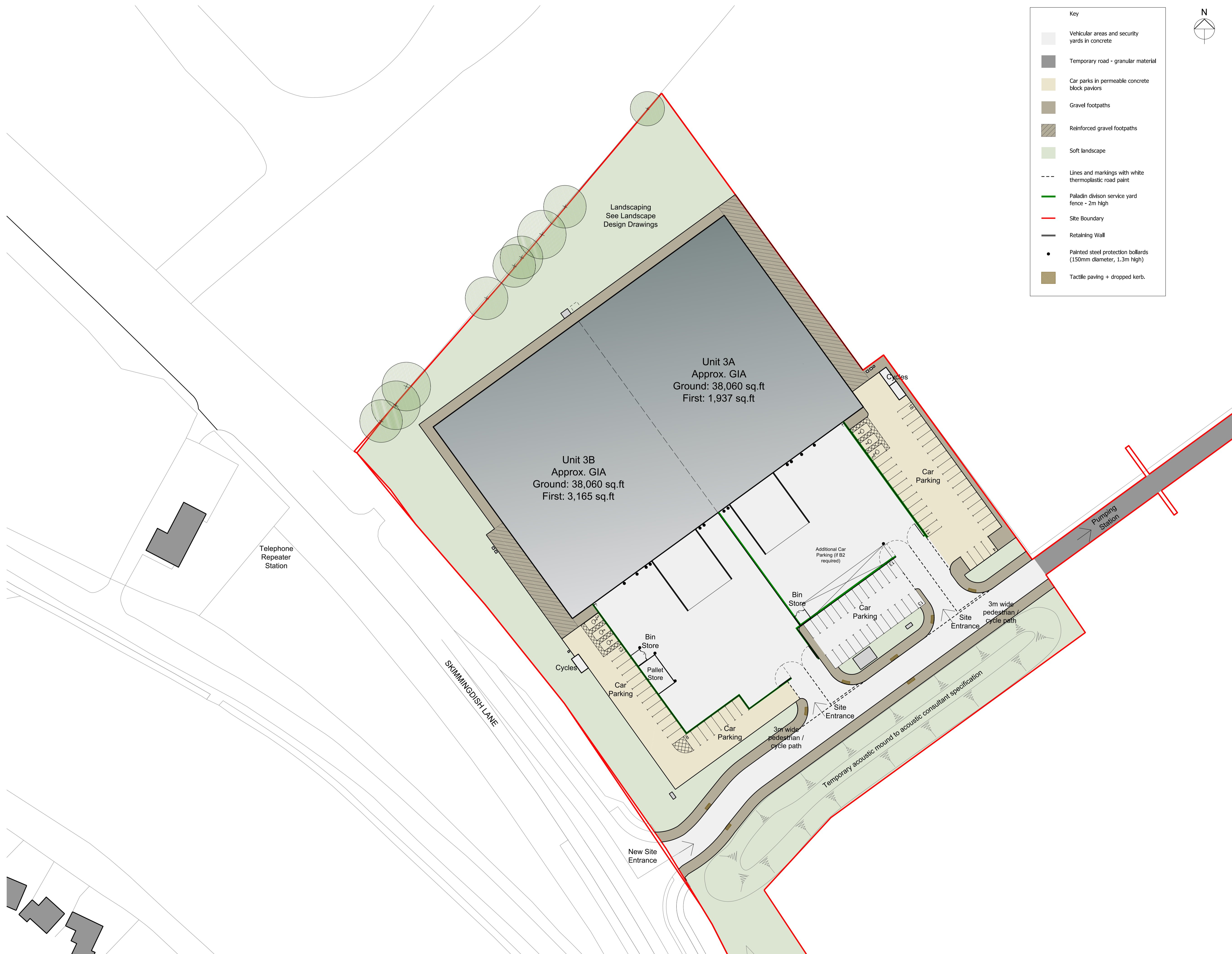
Reproduced from the Ordnance Survey map with the permission of the Controller of Her Majesty's Stationery Office. © Crown Copyright
C.A. Cornish Architects
Licence No. AR161859

Subject to Statutory Approvals.

All dimensions to be checked on site prior to commencement of work.



Key	
	Vehicular areas and security yards in concrete
	Temporary road - granular material
	Car parks in permeable concrete block paviors
	Gravel footpaths
	Reinforced gravel footpaths
	Soft landscape
	Lines and markings with white thermoplastic road paint
	Paladin division service yard fence - 2m high
	Site Boundary
	Retaining Wall
	Painted steel protection bollards (150mm diameter, 1.3m high)
	Tactile paving + dropped kerb.



Rev	Description	Chkd	Date
E	Access road updated. Tactile paving added	SM	20.07.17
D	Planning Issue - Internal setting out, car parking and key updated.	SM	12.06.17
C	Planning Issue	AS	09.06.17
B	M&E details added	AS	07.06.17
A	Gates and fence revised, site layout updated	AS	01.06.17

Peer House
8 -14 Verulam Street
London WC1X 8LZ
tel +44(0)20 7400 2120
enquiries@cornisharchitects.com
www.cornisharchitects.com

cornisharchitects

Project
**LINK 9 - SKIMMINGDISH LANE
BICESTER
PLOT 3**

Dwg Title
**External Finishes Site Plan
As Proposed**

Status
PLANNING

Scale
0 20 m

Date
22/05/2017

Dwg No
17007 / TP / 011

Rev
E

Copyright of Cornish Architects ©