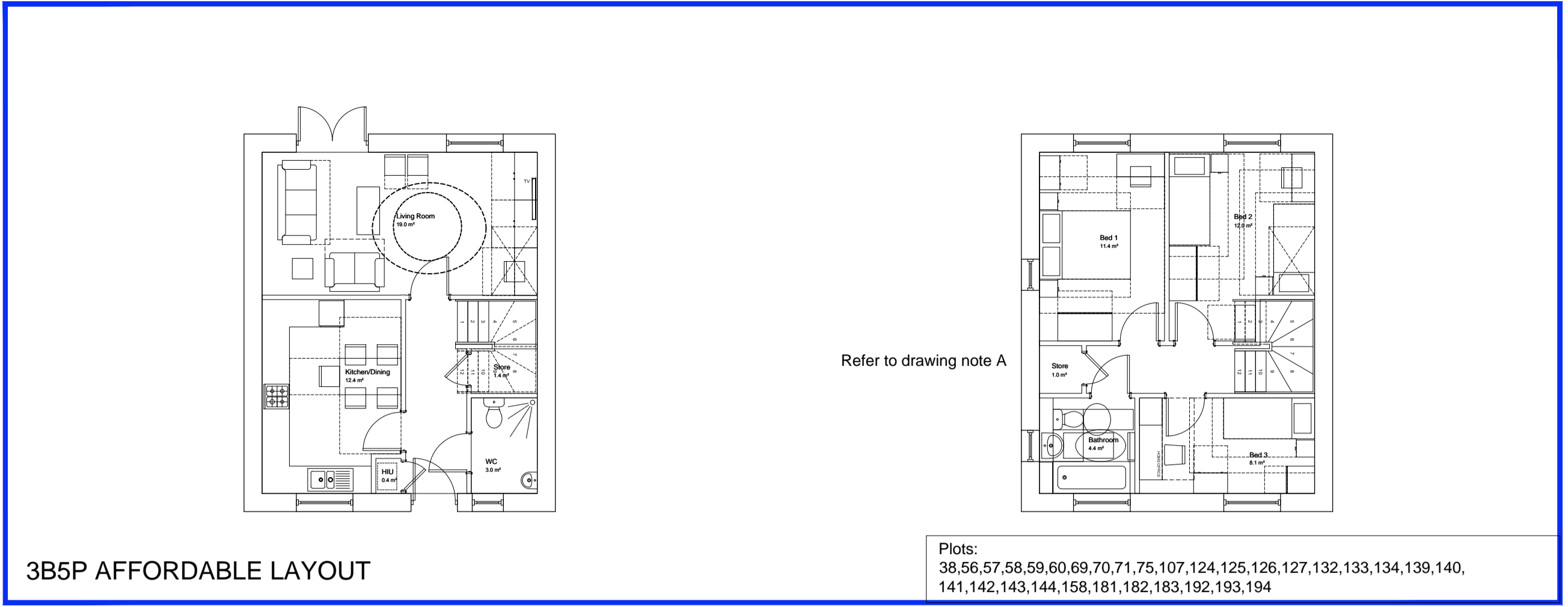
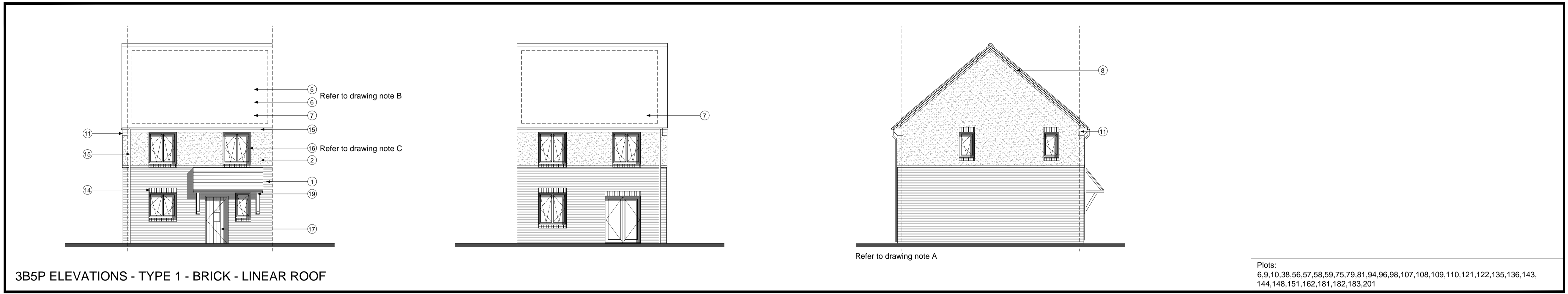


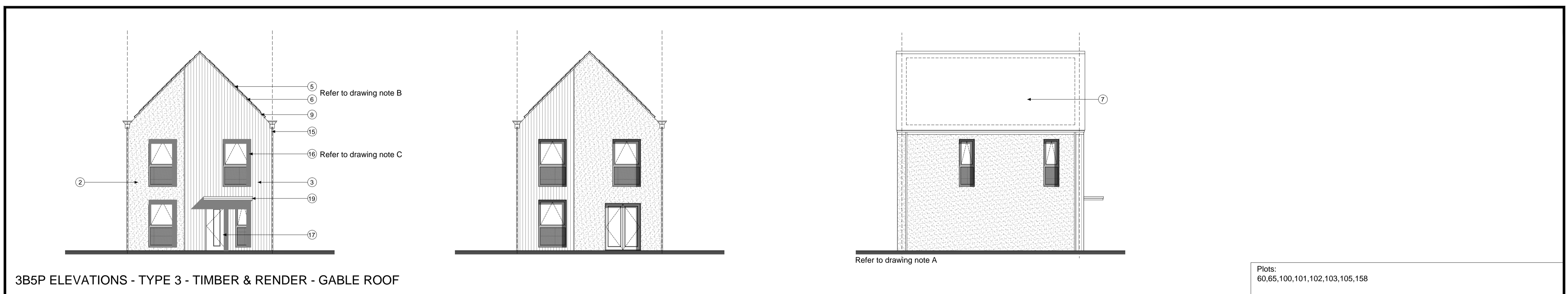
3B5P PRIVATE LAYOUT



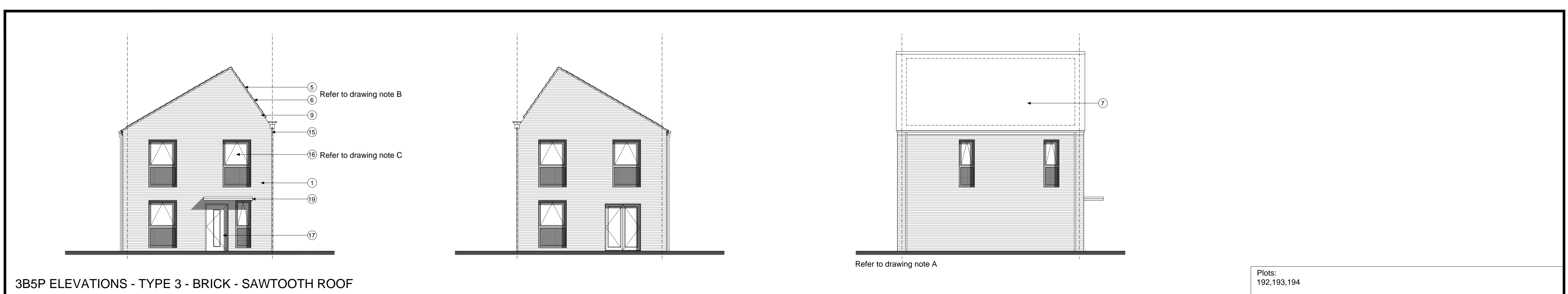
3B5P AFFORDABLE LAYOUT



3B5P ELEVATIONS - TYPE 1 - BRICK - LINEAR ROOF



3B5P ELEVATIONS - TYPE 3 - TIMBER & RENDER - GABLE ROOF



3B5P ELEVATIONS - TYPE 3 - BRICK - SAWTOOTH ROOF

notes

- The contractor is responsible for checking dimensions, tolerances and references. Any discrepancy to be verified with the Architect before proceeding with the works.
- Where an item is covered by drawings to different scales the larger scale drawing is to be worked to.
- Do not scale drawing. Figured dimensions to be worked to in all cases.

CDM Regulations 2007

ALL current drawings and specifications for the project must be read in conjunction with the Designer's Hazard and Environmental Assessment Record.

Handed Plots:
38,69,79,81,100,101,102,103,115,116,117,124,132,143,163,192,202

3B5P Area: 90.8m2

NOTE A: Gable windows will only apply to plots indicated on drawing: 'AA2699(3)_2007'

NOTE B: For individual plot roof materials refer to drawing 'AA2699(3)2006'

NOTE C: All Windows to bathrooms are to be obscured

Materials and details key

- 1 Face brickwork - Type 1, red mult. Type 3, red mult. Enriched, red mult, buff mult and grey mult.
- 2 Through colour render: colour ivory
- 3 Vertical timber cladding (Thermowood, with natural untreated finish)
- 4 Coursed stonework (Beckstone 'Natural Light weathered' enriched, laid in random course height - no jumpers)
- 5 Marley 'Riverdale' composite slate and ridge tile Refer to drawing 'AA2699(3)2006'
- 6 Bradstone Cotswold roof tile and ridge Refer to drawing 'AA2699(3)2006'
- 7 South facing roof slope designated for PV. Refer to drawing 'AA2699(3)2006'
- 8 Clipped verge detail. 2no. courses face brickwork laid gable end with natural colour bucket handle mortar joints; brick type / colour: 'Bastock 'Capital Multi Stock'
- 9 Clipped verge detail
- 10 Reconstituted stone corbel unit (colour: Portland)
- 11 Brickwork corbel; type / colour to match face brickwork
- 12 Projecting reconstituted stone string course (colour: Portland) to divide base facing material from render above
- 13 Re-constituted stone (colour: Portland) heads with drip detail and stooled sill
- 14 UPVC gutters & down pipes, colour: black. Fascia and soffit board colour: white (type 1) grey (type 3) black (enriched)
- 15 High performance triple glazed timber window; design to match house type. (colour type 1: white, type 3: grey, enriched: black)
- 17 IG doorset GRP (NG range) (colour type 1: black, type 3: grey, enriched: black)
- 18 Glazed side panel / fairlight to match door
- 19 Entrance canopy; style to match dwelling type and colour to match doors and windows
- 20 Up and over garage door; colour to match windows
- 21 Double glazed roof light
- 22 Inset horizontal timber cladding (Thermowood, with natural untreated finish)
- 23 Standing seam roof
- 24 Grey powder coated metal spandrel panels
- 25 Double height opening with glazing and grey powder coated metal spandrel panels. Colour: grey
- 26 Brick slips to match the brick of the main building

20-06-16 A Amendments in line with CDC comments 22-02-16. Quantity of Enriched units has been reduced and the elevation design amended. Minor amendment to front and rear elevations windows, increased width by half a brick. ... SW/MH

19-10-15 - First Issue. Planning

date	rev	revision/author/checker

client

A2 Dominion

purpose of issue
Planning - For Approval

project
Bicester Eco Town Phases 3&4

drawing
3B5P House - Sheet 1 Private & Affordable Layouts With all elevation treatment types

drawing no AA2699(3)/2103	rev A
drawn MR	checked SW
scale @ A1/A3 1:100	date Oct 2015

PRP Architects ©
10 Lindsey Street
Smithfield
London
EC1A 9HP
T +44 (0)20 7653 1200
F +44 (0)20 7653 1201
lon.prp@prparchitects.co.uk