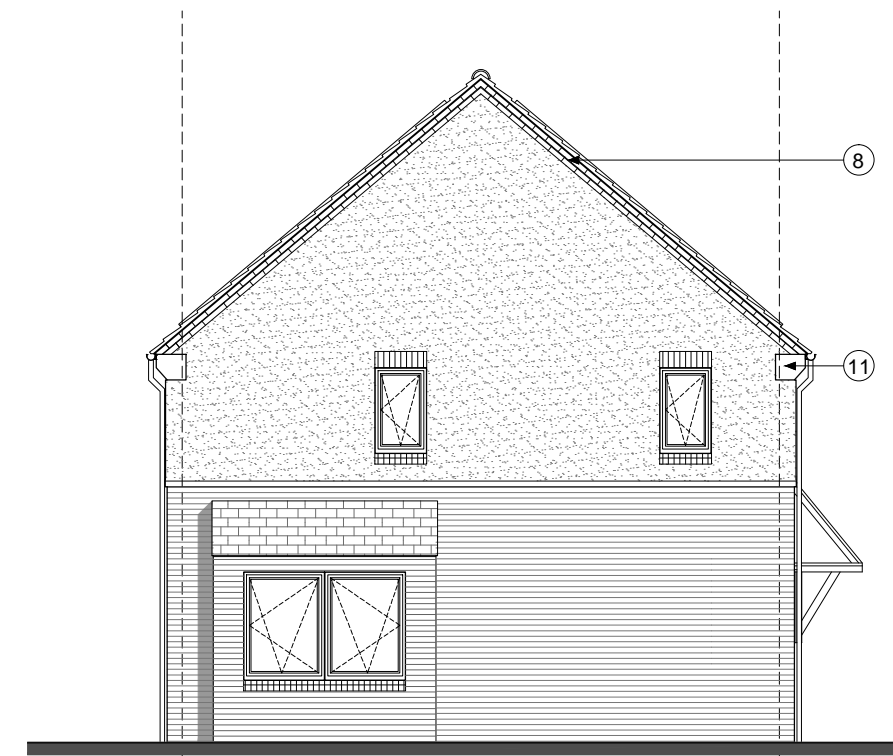
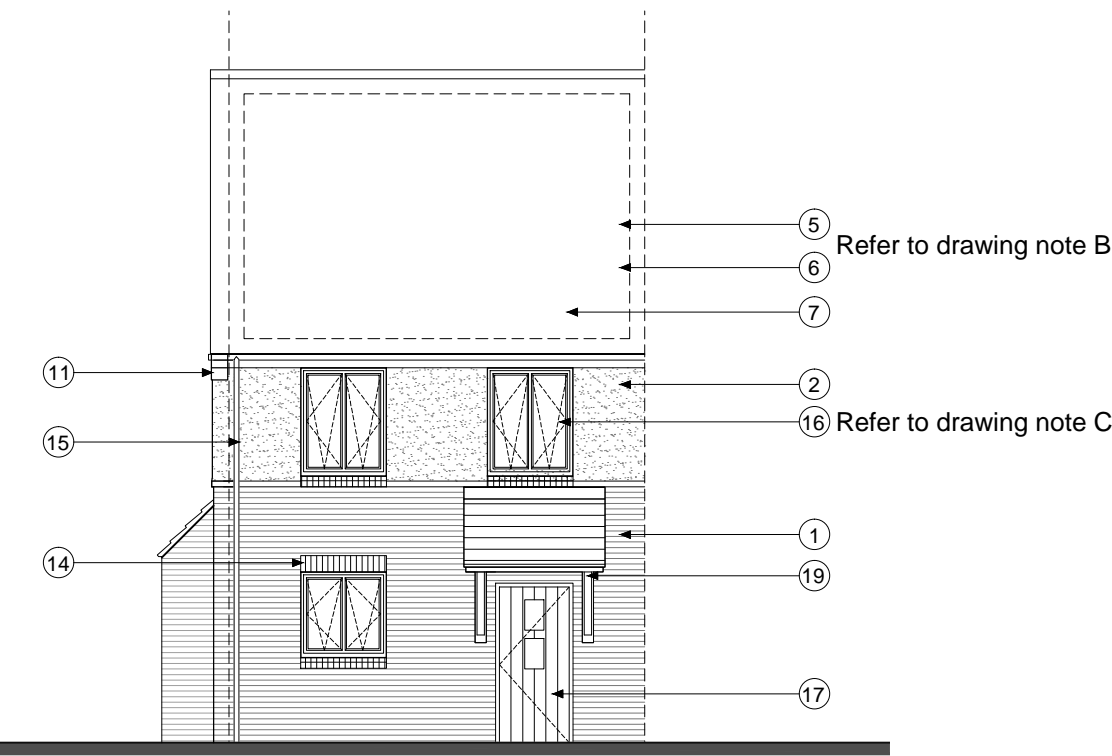


2B4P WITH BAY - PRIVATE LAYOUT

Plots:
78,123,145,200



2B4P WITH BAY ELEVATIONS - TYPE 1 - BRICK - LINEAR ROOF

Plots:
78,123,145,200

notes

- The contractor is responsible for checking dimensions, tolerances and references. Any discrepancy to be verified with the Architect before proceeding with the works.
- Where an item is covered by drawings to different scales the larger scale drawing is to be worked to.
- Do not scale drawing. Figured dimensions to be worked to in all cases.

CDM Regulations 2007

ALL current drawings and specifications for the project must be read in conjunction with the Designer's Hazard and Environmental Assessment Record.

Handed Plots:
78,145,200

2B4P Area: 77.9m2

NOTE A: Gable windows will only apply to plots indicated on drawing: 'AA2699(3)_2007'

NOTE B: For individual plot roof materials refer to drawing 'AA2699(3)2006'

NOTE C: All windows to bathrooms are to be obscured

Materials and details key

- 1 Face brickwork - Itstock 'Capital Multi Stock' laid stretcher bond with natural colour bucket handle mortar joints.
- 2 Through colour render: colour ivory
- 3 Vertical timber cladding (Thermowood, with natural untreated finish)
- 4 Coursed stonework (Beckstone 'Natural Light weathered' tumbled, laid in random course heights - no jumpers)
- 5 Marley 'Rivendale' composite slate and ridge tile Refer to drawing 'AA2699(3)2006'
- 6 Bradstone Cotswold roof tile and ridge Rafter to drawing 'AA2699(3)2006'
- 7 South facing roof slope designated for PV. Refer to drawing 'AA2699(3)2006'
- 8 Clipped verge detail. 2nd. course face brickwork laid stretcher bond with natural colour bucket handle mortar joints; brick type / colour: Itstock 'Capital Multi Stock'
- 9 Clipped verge detail
- 10 Reconstructed stone corbel unit (colour: Portland)
- 11 Brickwork corbel: type / colour to match face brickwork
- 12 Projecting reconstructed stone string course (colour: Portland) to divide base facing material from render above
- 13 Re-constituted stone (colour: Portland) heads with drip detail and scooped sill
- 14 Brickwork window heads and cant brick cills: type / colour to match face brickwork
- 15 UPVC gutters & down pipes: colour: black. Fascia and soffit board colour: white (type 1) grey (type 3)
- 16 High performance triple glazed timber window: design to match house type. (colour type 1: white, type 3: grey)
- 17 IG doorset GRP (NG range) (colour type 1: black type 3: grey)
- 18 Glazed side panel / fanlight to match door
- 19 Entrance canopy: style to match dwelling type and colour to match doors and windows.
- 20 Up and over garage door: colour to match windows
- 21 Double glazed roof light
- 22 Sawtooth facing brickwork - Itstock 'Capital Multi Stock' with natural colour bucket handle mortar joints.
- 23 Standing seam roof
- 24 Grey powder coated metal spandrel panels
- 25 Double height opening with glazing and grey powder coated metal spandrel panels

19-10-15 - First Issue. Planning

date	rev	revision/author/checker

client

A2 Dominion

purpose of issue

Planning - For Approval

project

Bicester Eco Town
Phases 3&4

drawing

2B4P House with bay
Private Layout
With all elevation treatment types

drawing no

AA2699(3)/2102

rev

/

drawn MR

checked SW

scale @ A1/A3 1:100

date Oct 2015

PRP Architects ©
10 Lindsey Street
Smithfield
London
EC1A 9HP
T +44 (0)20 7653 1200
F +44 (0)20 7653 1201
lon.prp@prparchitects.co.uk

