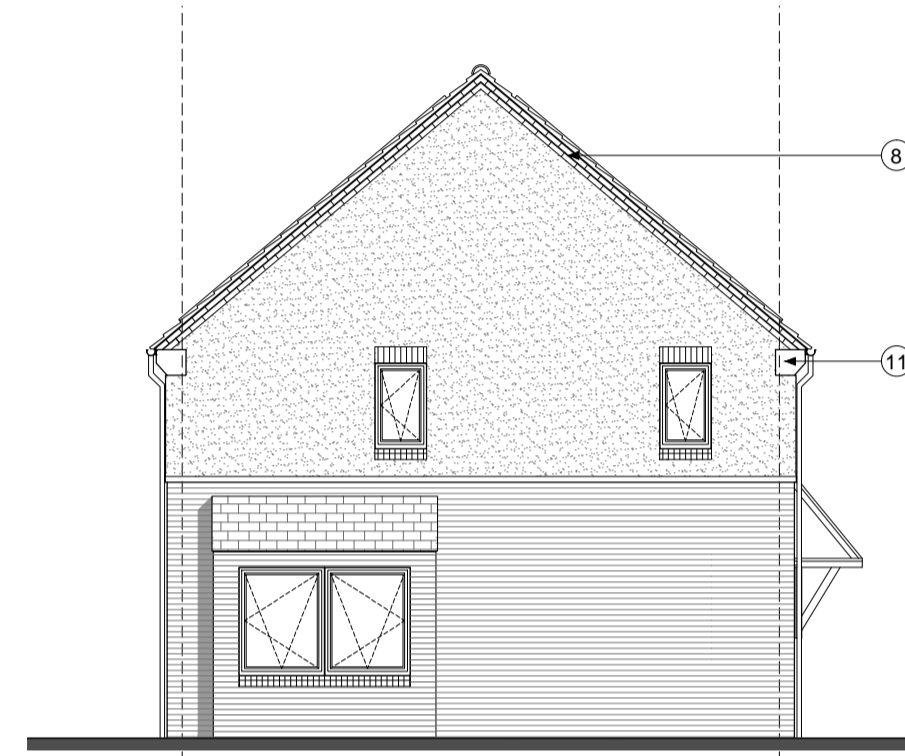
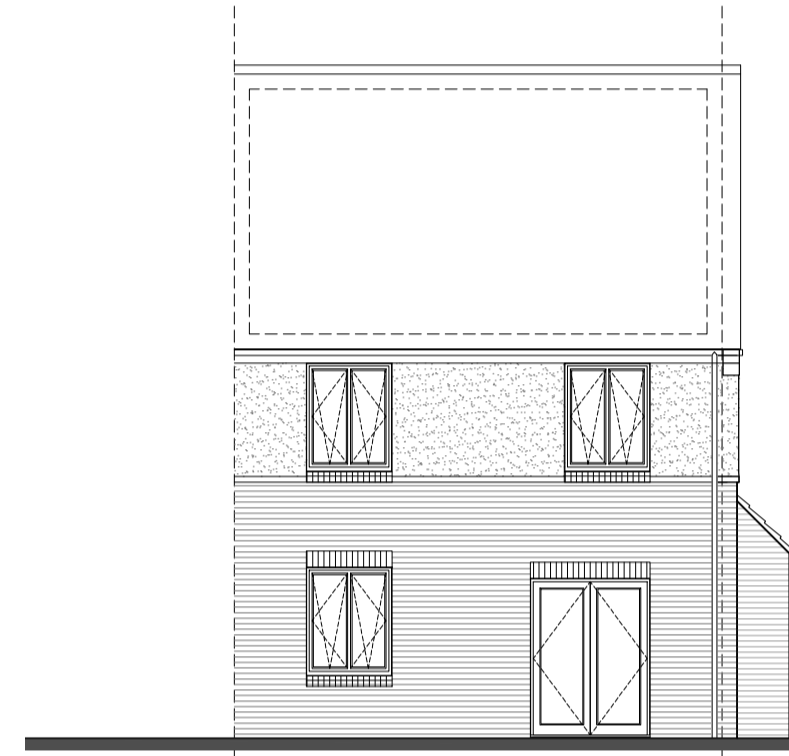
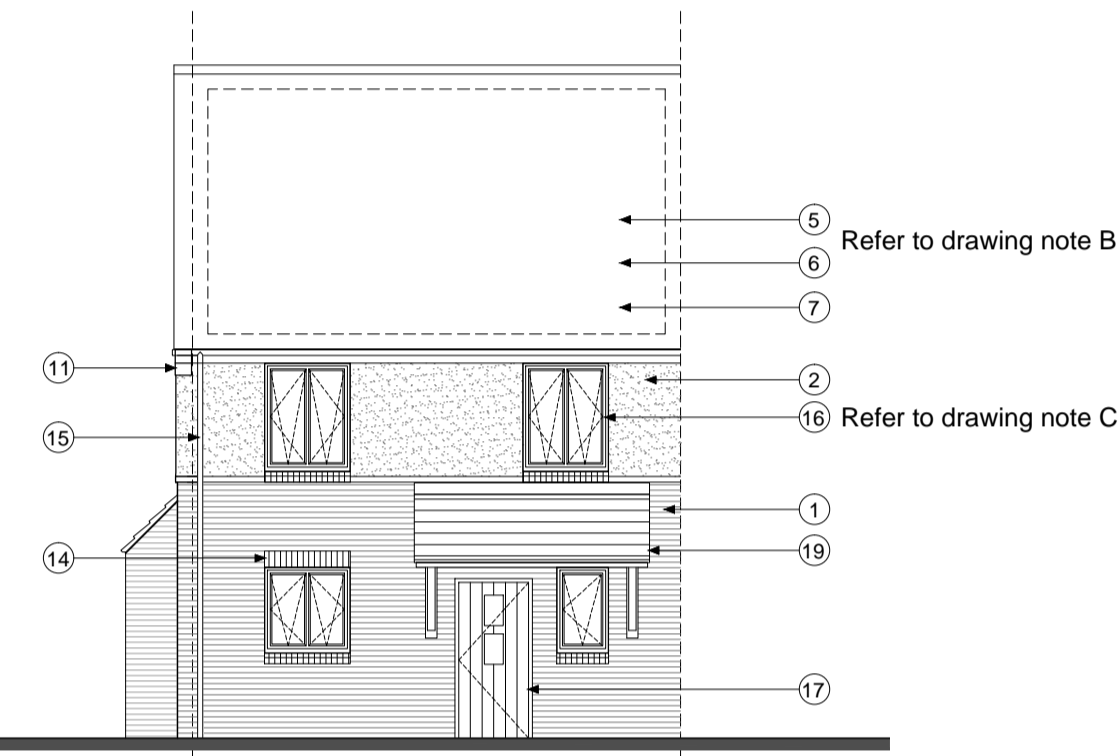


3B5P WITH BAY - PRIVATE LAYOUT

Plots:
13,20,25,43,120



3B5P WITH BAY ELEVATIONS - TYPE 1 - BRICK - LINEAR ROOF

Plots:
13,20,25,43,120

notes

- The contractor is responsible for checking dimensions, tolerances and references. Any discrepancy to be verified with the Architect before proceeding with the works.
- Where an item is covered by drawings to different scales the larger scale drawing is to be worked to.
- Do not scale drawing. Figured dimensions to be worked to in all cases.

CDM Regulations 2007

ALL current drawings and specifications for the project must be read in conjunction with the Designer's Hazard and Environmental Assessment Record.

Handed Plots:
20,120

3B5P Area: 92.1m2

NOTE A: Gable windows will only apply to plots indicated on drawing: 'AA2699(3)_2007'

NOTE B: For individual plot roof materials refer to drawing 'AA2699(3)2006

NOTE C: All windows to bathrooms are to be obscured

Materials and details key

- Face brickwork - Bstook 'Capital Multi Stock' laid stretcher bond with natural colour bucket handle mortar joints.
- Through colour render: colour ivory
- Vertical timber cladding (Thermowood, with natural untreated finish)
- Coursed stonework (Beckstone 'Natural Light weathered' tumbled, laid in random course heights - no jumpers)
- Marker 'Rivendell' composite slate and ridge tile Refer to drawing 'AA2699(3)2006'
- Brickstone Cotswold roof tile and ridge Refer to drawing 'AA2699(3)2006'
- South facing roof slope designated for PV. Refer to drawing 'AA2699(3)2006'
- Clipped verge detail. 2no. courses face brickwork laid stretcher bond with natural colour bucket handle mortar joints: brick type / colour: Bstook 'Capital Multi Stock'
- Clipped verge detail
- Reconstituted stone corbel unit (colour: Portland)
- Brickwork corbel: type / colour to match face brickwork
- Projecting reconstituted stone string course (colour: Portland) to divide base facing material from render above
- Re-constituted stone (colour: Portland) heads with drip detail and stooled cill
- Brickwork window heads and cant brick cills: type / colour to match face brickwork
- UPVC gutters & down pipes: colour: black. Fascia and soffit board colour: white (type 1) grey (type 3)
- High performance triple glazed timber window: design to match house type (colour type 1: white, type 3: grey)
- IG doorset GFRP (NG range) (colour type 1: black type 2: grey)
- Glazed side panel / fanlight to match door
- Entrance canopy: style to match dwelling type and colour to match doors and windows.
- Up and over garage door: colour to match windows
- Double glazed roof light
- Sawtooth facing brickwork - Bstook 'Capital Multi Stock' with natural colour bucket handle mortar joints.
- Standing seam roof
- Grey powder coated metal spandrel panels
- Double height opening with glazing and grey powder coated metal spandrel panels

19-10-15 - First Issue. Planning

date	rev	revision/author/checker

client

A2 Dominion

purpose of issue

Planning - For Approval

project

Bicester Eco Town
Phases 3&4

drawing

3B5P House with bay
Private Layout
With all elevation treatment types

drawing no	rev
AA2699(3)/2105	/

drawn	checked
MR	SW

scale @	date
A1/A3 1:100	Oct 2015

PRP Architects ©
10 Lindsey Street
Smithfield
London
EC1A 9HP
T +44 (0)20 7653 1200
F +44 (0)20 7653 1201
lon.prp@prparchitects.co.uk

