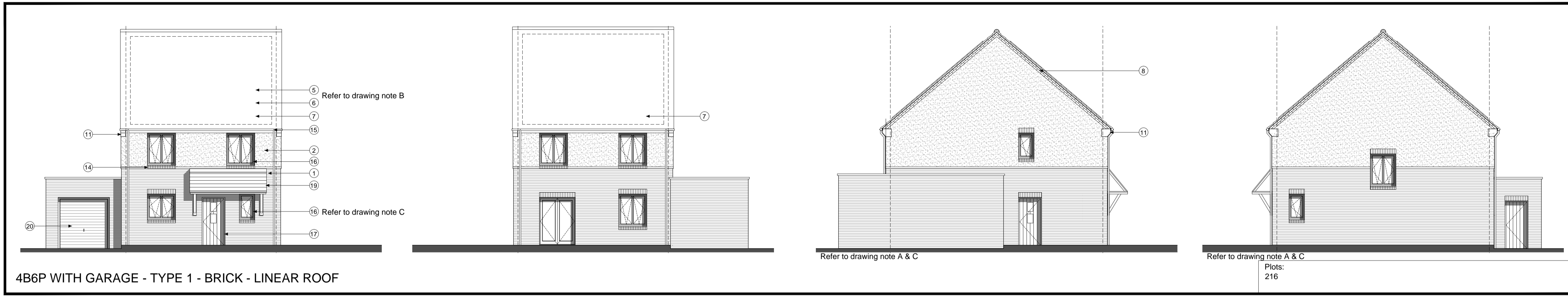
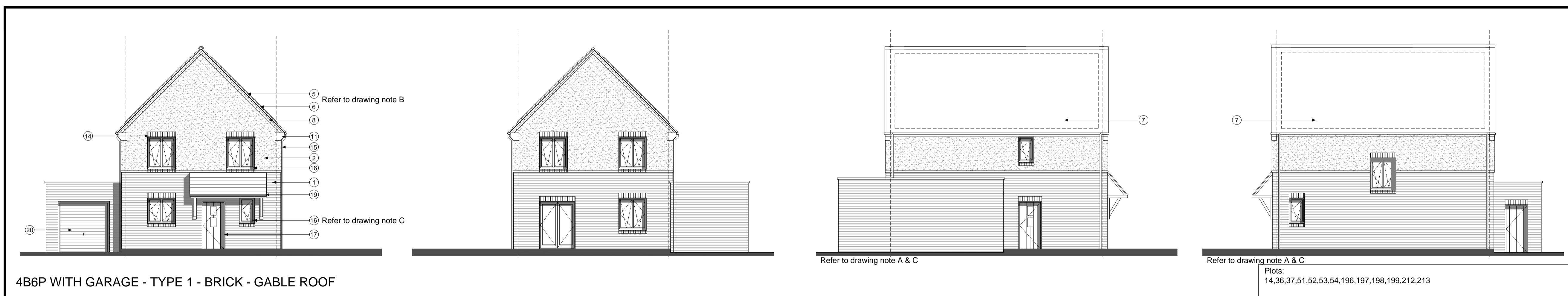


4B6P WITH GARAGE - PRIVATE LAYOUT

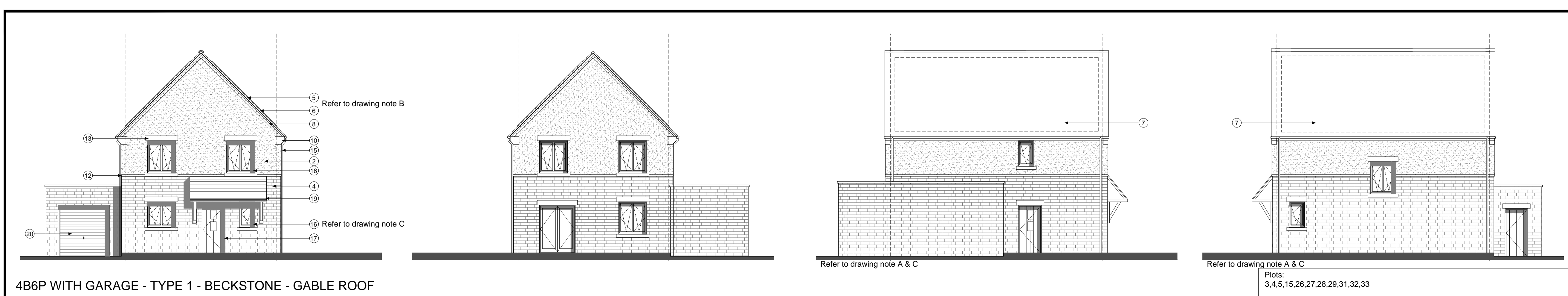
Plots:
3.4,5,14,15,16,17,18,19,26,27,28,29,31,32,33,36,37,44,45,46,47,48,51,52,53,54,83,84,
137,138,165,166,167,184,185,186,187,196,197,198,199,205,206,207,212,213,215,216,
221,222,223,224



4B6P WITH GARAGE - TYPE 1 - BRICK - LINEAR ROOF



4B6P WITH GARAGE - TYPE 1 - BRICK - GABLE ROOF



4B6P WITH GARAGE - TYPE 1 - BECKSTONE - GABLE ROOF

notes

- The contractor is responsible for checking dimensions, tolerances and references. Any discrepancy to be verified with the Architect before proceeding with the works.
- Where an item is covered by drawings to different scales the larger scale drawing is to be worked to.
- Do not scale drawing. Figured dimensions to be worked to in all cases.

CDM Regulations 2007

ALL current drawings and specifications for the project must be read in conjunction with the Designer's Hazard and Environmental Assessment Record.

Handed Plots:
3,5,15,17,19,26,28,31,33,37,45,47,52,54,84,138,166,
185,187,197,199,206,207,213,216,223

4B7P Area: 112.6m2

NOTE A: Gable windows will only apply to plots indicated on drawing: 'AA2699(3)_2007'

NOTE B: For individual plot roof materials refer to drawing 'AA2699(3)2006'

NOTE C: All windows to bathrooms are to be obscured

Materials and details key

- Face brickwork - Type 1, red multi, Type 3, red multi, Enriched, red multi, buff multi and grey multi.
- Through colour render: colour ivory
- Vertical timber cladding (Thermowood, with natural untreated finish)
- Coursed stonework (Beckstone Natural Light weathered timber, laid in random course height - no joints)
- Marley 'Rivendel' composite slate and ridge tile Refer to drawing 'AA2699(3)2006'
- Bradstone Cotswold roof tile and ridge Refer to drawing 'AA2699(3)2006'
- South facing roof slope designated for PV. Refer to drawing 'AA2699(3)2006'
- Clipped verge detail. 2no. courses face brickwork laid stretcher bond with natural colour bucket handle mortar joints; brick type / colour: Bostock 'Capital Multi Stock'
- Clipped verge detail
- Reconstituted stone corbel unit (colour: Portland)
- Brickwork corbel: type / colour to match face brickwork
- Projecting reconstituted stone string course (colour Portland) to divide base facing material from render above
- Re-constituted stone (colour Portland) heads with drip detail and steeled sill
- Brickwork window heads and cant brick sills: type / colour to match face brickwork
- UPVC gutters & down pipes: colour: black. Fascia and soffit board colour: white (type 1) grey (type 3) black (enriched)
- High performance triple glazed timber window: design to match house type (colour type 1: white, type 3: grey, enriched: black)
- IG doorset GRP (NG range) (colour type 1: black, type 3: grey, enriched: black)
- Glazed side panel / fanlight to match door
- Entrance canopy: style to match dwelling type and colour to match doors and windows.
- Up and over garage door: colour to match windows
- Double glazed roof light
- Inset horizontal timber cladding (Thermowood, with natural untreated finish)
- Standing seam roof
- Grey powder coated metal spandrel panels
- Double height opening with glazing and grey powder coated metal spandrel panels. Colour: grey
- Brick slips to match the brick of the main building

20-06-16 A Amendments in line with CDC comments 22-02-16. Quantity of Enriched units has been reduced and the elevation design amended. Minor amendment to front and rear elevations windows, increased width by half a brick. ... SW/MH

19-10-15 - First Issue. Planning
date rev revision/author/checker

client
A2 Dominion

purpose of issue
Planning - For Approval

project
Bicester Eco Town Phases 3&4

drawing
4B6P House with garage - Sheet 1 Private Layout With all elevation treatment types

drawing no	AA2699(3)/2108	rev	A
drawn	MR	checked	SW
scale @	A1/A3:1:100	date	Oct 2015

PRP Architects ©
10 Lindsey Street
Smithfield
London
EC1A 9HP
T +44 (0)20 7653 1200
F +44 (0)20 7653 1201
lon.prp@prparchitects.co.uk

