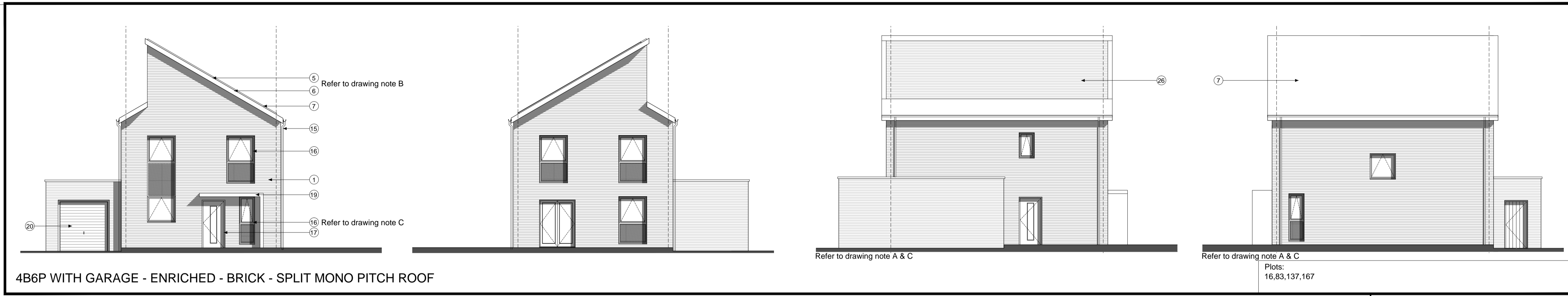


4B6P WITH GARAGE - TYPE 3 - TIMBER & RENDER - GABLE ROOF



4B6P WITH GARAGE - ENRICHED - BRICK - SPLIT MONO PITCH ROOF

**Note:** Handed Enriched plots should maintain a south facing roof for PV requirements

**notes**

- The contractor is responsible for checking dimensions, tolerances and references. Any discrepancy to be verified with the Architect before proceeding with the works.
- Where an item is covered by drawings to different scales the larger scale drawing is to be worked to.
- Do not scale drawing. Figured dimensions to be worked to in all cases.

**CDM Regulations 2007**

ALL current drawings and specifications for the project must be read in conjunction with the Designer's Hazard and Environmental Assessment Record.

**Handed Plots:**  
3,5,15,17,19,26,28,31,33,37,45,47,52,54,84,138,166,185,187,197,199,206,207,213,216,223

**4B7P Area: 112.6m2**

**NOTE A:** Gable windows will only apply to plots indicated on drawing: 'AA2699(3)\_2007'

**NOTE B:** For individual plot roof materials refer to drawing 'AA2699(3)2006'

**NOTE C:** All windows to bathrooms are to be obscured

**Materials and details key**

- Face brickwork - Type 1, red multi; Type 3, red multi, Enriched, red multi, buff multi and grey multi.
- Through colour render; colour ivory
- Vertical timber cladding (Thermowood; with natural untreated finish)
- Coursed stonework (Beckstone 'Natural Light weathered' tumbled, laid in random course heights - no jumpers)
- Marley 'Riverdale' composite slate and ridge tile Refer to drawing 'AA2699(3)2006'
- Bradstone Cotswold roof tile and ridge Refer to drawing 'AA2699(3)2006'
- South facing roof slope designated for PV. Refer to drawing 'AA2699(3)2006'
- Clipped verge detail. 250 courses face brickwork laid stretcher bond with natural colour bucket handle mortar joints; brick type / colour: Buxton 'Capital Multi Stock'
- Clipped verge detail
- Reconstituted stone corbel unit (colour: Portland)
- Brickwork corbel; type / colour to match face brickwork
- Projecting reconstituted stone string course (colour Portland) to divide base facing material from render above
- Re-constituted stone (colour Portland) heads with drip detail and concealed cill
- Brickwork window heads and cast brick cills; type / colour to match face brickwork
- UPVC gutters & down pipes; colour: black. Fascia and soffit board colour: white (type 1) grey (type 3) black (enriched)
- High performance triple glazed timber window; design to match house type (colour type 1: white, type 3: grey, enriched black)
- IG doorset GRP (NG range) (colour type 1: black, type 3: grey, enriched black)
- Glazed side panel / fanlight to match door
- Entrance canopy; style to match dwelling type and colour to match doors and windows.
- Up and over garage door; colour to match windows
- Double glazed roof light
- Inset horizontal timber cladding (Thermowood; with natural untreated finish)
- Standing seam roof
- Grey powder coated metal spandrel panels
- Double height opening with glazing and grey powder coated metal spandrel panels. Colour: grey
- Brick slips to match the brick of the main building

20-06-16 A Amendments in line with CDC comments 22-02-16. Quantity of Enriched units has been reduced and the elevation design amended. Minor amendment to front and rear elevations windows, increased width by half a brick. ... SW/MH

date	rev	revision/author/checker
19-10-15	-	First Issue. Planning

client  
**A2 Dominion**

purpose of issue  
**Planning - For Approval**

project  
**Bicester Eco Town Phases 3&4**

drawing  
**4B6P House with garage - Sheet 2 Private Layouts With all elevation treatment types**

drawing no <b>AA2699(3)/2109</b>	rev <b>A</b>
-------------------------------------	-----------------

drawn <b>MR</b>	checked <b>SW</b>
--------------------	----------------------

scale @ A1/A3 1:100	date <b>Oct 2015</b>
---------------------	-------------------------