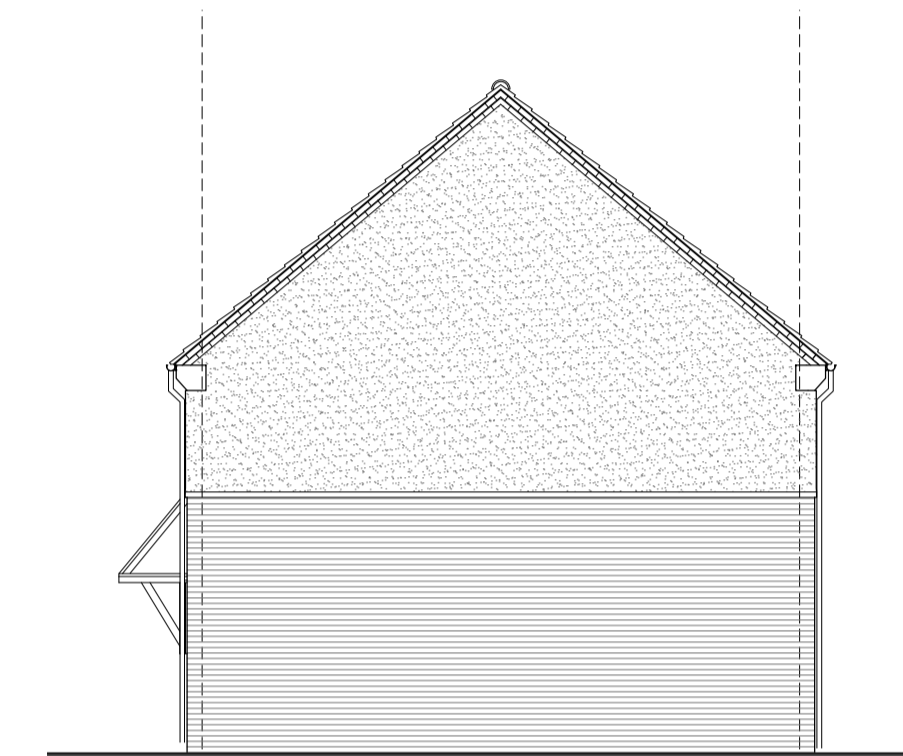
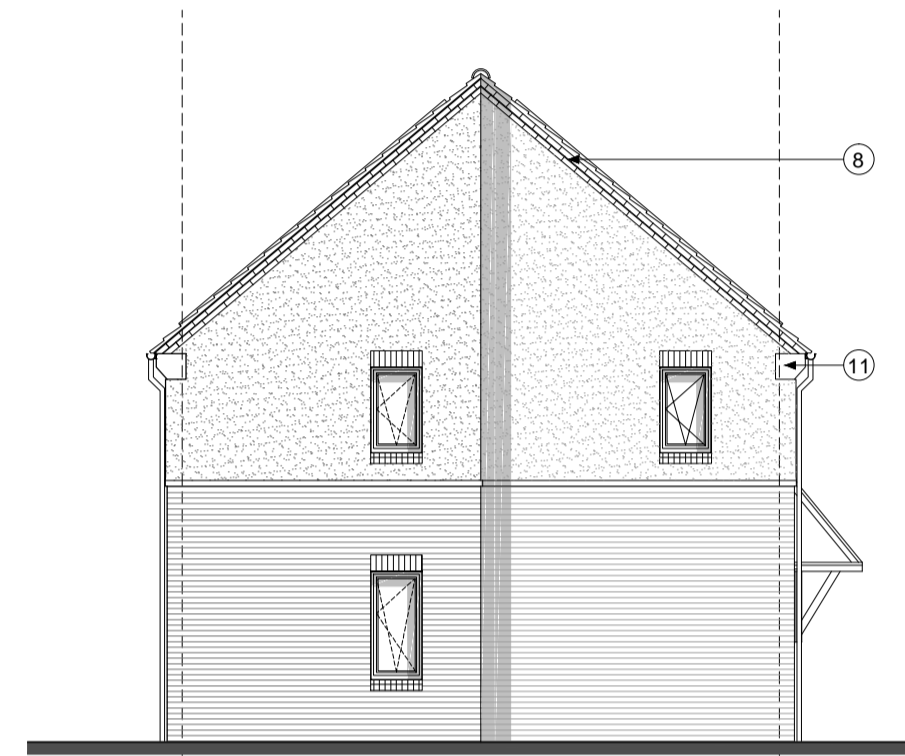
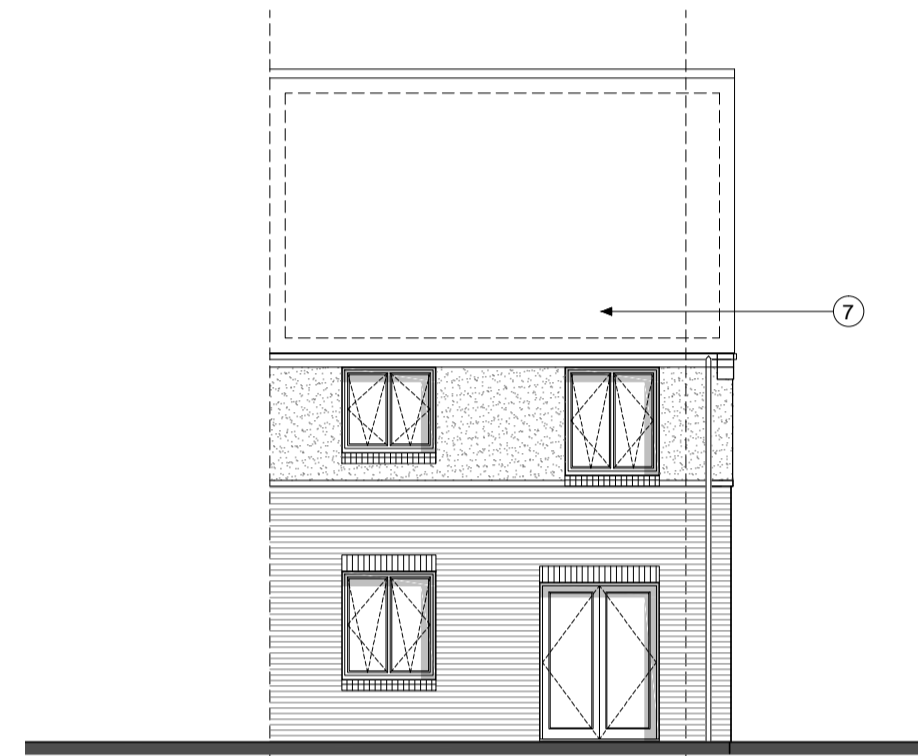
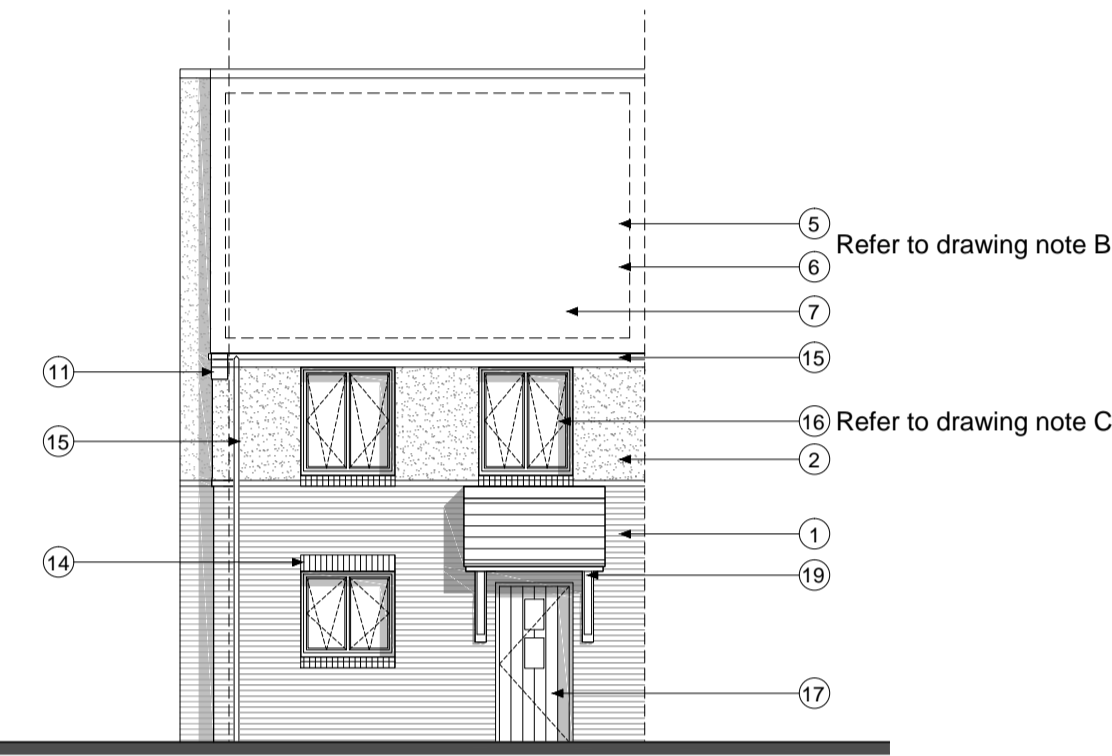


2B4P WITH BAY - PRIVATE LAYOUT

Plots:  
78,123,145,200



2B4P WITH BAY ELEVATIONS - TYPE 1 - BRICK - LINEAR ROOF

Plots:  
78,123,145,200

notes

- The contractor is responsible for checking dimensions, tolerances and references. Any discrepancy to be verified with the Architect before proceeding with the works.
- Where an item is covered by drawings to different scales the larger scale drawing is to be worked to.
- Do not scale drawing. Figured dimensions to be worked to in all cases.

CDM Regulations 2007

ALL current drawings and specifications for the project must be read in conjunction with the Designer's Hazard and Environmental Assessment Record.

**Handed Plots:**  
78,145,200

**2B4P Area: 79.2m2**

**NOTE A:** Gable windows will only apply to plots indicated on drawing: 'AA2699(3)\_2007'

**NOTE B:** For individual plot roof materials refer to drawing 'AA2699(3)2006'

**NOTE C:** All windows to bathrooms are to be obscured

Materials and details key

- Face brickwork - Type 1, red multi, Type 3, red multi, Enriched, red multi, buff multi and grey multi.
- Through colour render: colour ivory
- Vertical timber cladding (Thermowood, with natural untreated finish)
- Coursed stonework (Beckstone Natural Light weathered tumbled, laid in random course heights - no jumpers)
- Maley 'Riverdale' composite slate and ridge tile Refer to drawing 'AA2699(3)2006'
- Bradstone Cotswold roof tile and ridge Refer to drawing 'AA2699(3)2006'
- South facing roof slope designated for PV. Refer to drawing 'AA2699(3)2006'
- Clipped verge detail: 200, coursed face brickwork laid stretcher bond with natural colour bucket handle mortar joints; brick type / colour: Bostock Capital Multi Stock
- Clipped verge detail
- Reconstituted stone corbel unit (colour: Portland)
- Brickwork corbel, type / colour to match face brickwork
- Projecting reconstituted stone string course (colour Portland) to divide base facing material from render above
- Re-constituted stone (colour Portland) heads with drip detail and sloped sill
- Brickwork window heads and cant brick dills, type / colour to match face brickwork
- UPVC gutters & down pipes; colour: black. Fascia and soffits board colour: white (type 1) grey (type 3) black (enriched)
- High performance triple glazed timber window, design to match house type, (colour type 1: white, type 3: grey, enriched: black)
- 15.5mmver GFRP (NG range) (colour type 1: black, type 3: grey, enriched: black)
- Glazed side panel / fanlight to match door
- Entrance canopy: style to match chelling type and colour to match doors and windows.
- Up and over garage door: colour to match windows
- Double glazed roof light
- Double glazed roof light
- Inset horizontal timber cladding (Thermowood, with natural untreated finish)
- Standing seam roof
- Grey powder coated metal spandrel panels
- Double height opening with glazing and grey powder coated metal spandrel panels. Colour: grey
- Brick slips to match the brick of the main building

26-08-16 B Updates in line CDC comments dated: 27-07-16 & 23-08-16. ... SW/MH

20-06-16 A Amendments in line with CDC comments 22-02-16. Quantity of Enriched units has been reduced and the elevation design amended. Minor amendment to front and rear elevations windows, increased width by half a brick. ... SW/MH

19-10-15 - First Issue. Planning

client  
**A2 Dominion**

purpose of issue  
**Planning - For Approval**

project  
**Bicester Eco Town  
Phases 3&4**

drawing  
**2B4P House with bay  
Private Layout  
With all elevation treatment types**

drawing no	AA2699(3)/2102	rev	B
------------	----------------	-----	---

drawn	MR	checked	SW
-------	----	---------	----

scale @	A1/A3 1:100	date	Oct 2015
---------	-------------	------	----------

PRP Architects ©  
10 Lindsey Street  
Smithfield  
London  
EC1A 9HP  
T +44 (0)20 7653 1200  
F +44 (0)20 7653 1201  
ton.prp@prparchitects.co.uk

