

notes

- The contractor is responsible for checking dimensions, tolerances and references. Any discrepancy to be verified with the Architect before proceeding with the works.
- Where an item is covered by drawings to different scales the larger scale drawing is to be worked to.
- Do not scale drawing. Figured dimensions to be worked to in all cases.

CDM Regulations 2007

ALL current drawings and specifications for the project must be read in conjunction with the Designer's Hazard and Environmental Assessment Record.

Handed Plots:
38,69,79,81,100,101,102,115,124,132,143

3B5P Area: 90.8m2

NOTE A: Gable windows will only apply to plots indicated on drawing: 'AA2699(3)_2007'

NOTE B: For individual plot roof materials refer to drawing 'AA2699(3)2006

NOTE C: All Windows to bathrooms are to be obscured

Materials and details key

- 1 Face brickwork - Type 1, red multi, Type 3, red multi, Enriched, red multi, buff multi and grey multi.
- 2 Through colour render: colour ivory
- 3 Vertical timber cladding (Thermowood, with natural untreated finish)
- 4 Coursed stonework (Backstone Natural Light weathered tumbled, laid in random course heights - no jumpers)
- 5 Muley Rivendell composite slate and ridge tile Refer to drawing 'AA2699(3)2006'
- 6 Bradstone Cotswold roof tile and ridge Refer to drawing 'AA2699(3)2006'
- 7 South facing roof slope designated for PV. Refer to drawing 'AA2699(3)2006'
- 8 Clipped verge detail. 2nd. courses face brickwork laid in random bond with natural colour bucket handle mortar joints: brick type / colour: 'Bastock Capital Multi Stock'
- 9 Clipped verge detail
- 10 Reconstituted stone corbel unit (colour: Portland)
- 11 Brickwork corbel, type / colour to match face brickwork
- 12 Projecting reconstituted stone string course (colour: Portland) to divide base facing material from render above
- 13 Re-constituted stone (colour: Portland) heads with drip detail and stooped sill
- 14 Brickwork window heads and cant brick sills: type / colour to match face brickwork
- 15 UPVC gutters & down pipes: colour: black. Fascia and soffit board colour: white (type 1) grey (type 3) black (enriched)
- 16 High performance triple glazed timber window, design to match house type (colour type 1 white, type 3 grey, enriched, black)
- 17 10 double GWP (NG sangle) (colour type 1 black, type 3 grey, enriched black)
- 18 Glazed side panel / fairlight to match door
- 19 Entrance canopy style to match dwelling type and colour to match doors and windows.
- 20 Up and over garage door: colour to match windows
- 21 Double glazed roof light
- 22 Horizontal timber cladding (Thermowood, with natural untreated finish)
- 23 Standing seam roof
- 24 Grey powder coated metal spandrel panels
- 25 Double height opening with glazing and grey powder coated metal spandrel panels. Colour: grey
- 26 Brick slips to match the brick of the main building

26-08-16 B Updates in line CDC comments dated: 27-07-16 & 23-08-16. ... SW/MH

20-06-16 A Amendments in line with CDC comments 22-02-16. Quantity of Enriched units has been reduced and the elevation design amended. Minor amendment to front and rear elevations windows, increased width by half a brick. ... SW/MH

19-10-15 - First Issue. Planning date rev revision/author/checker

client
A2 Dominion

purpose of issue
Planning - For Approval

project
Bicester Eco Town Phases 3&4

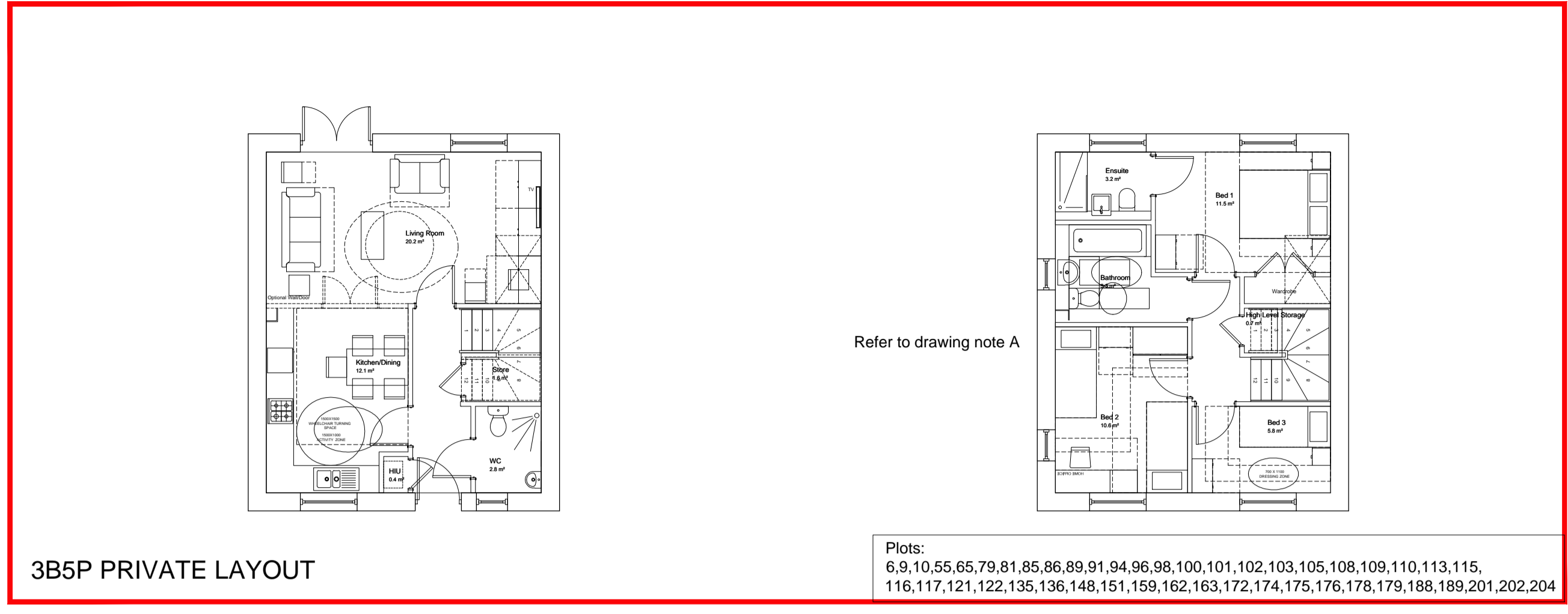
drawing
3B5P House - Sheet 1 Private & Affordable Layouts With all elevation treatment types

drawing no
AA2699(3)/2103 rev **B**

drawn **MR** checked **SW**

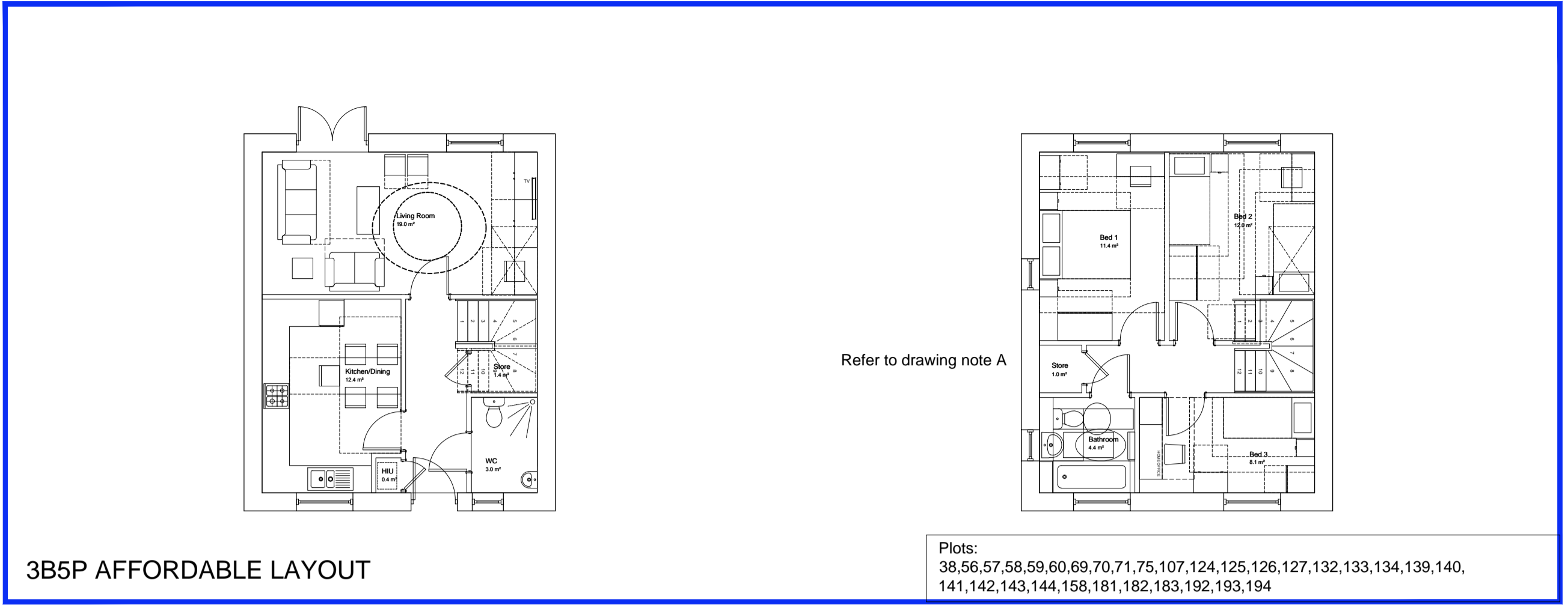
scale @ **A1/A3 1:100** date **Oct 2015**

PRP Architects ©
10 Lindsey Street
Smithfield
London
EC1A 9HP
T +44 (0)20 7653 1200
F +44 (0)20 7653 1201
ton.prp@prparchitects.co.uk



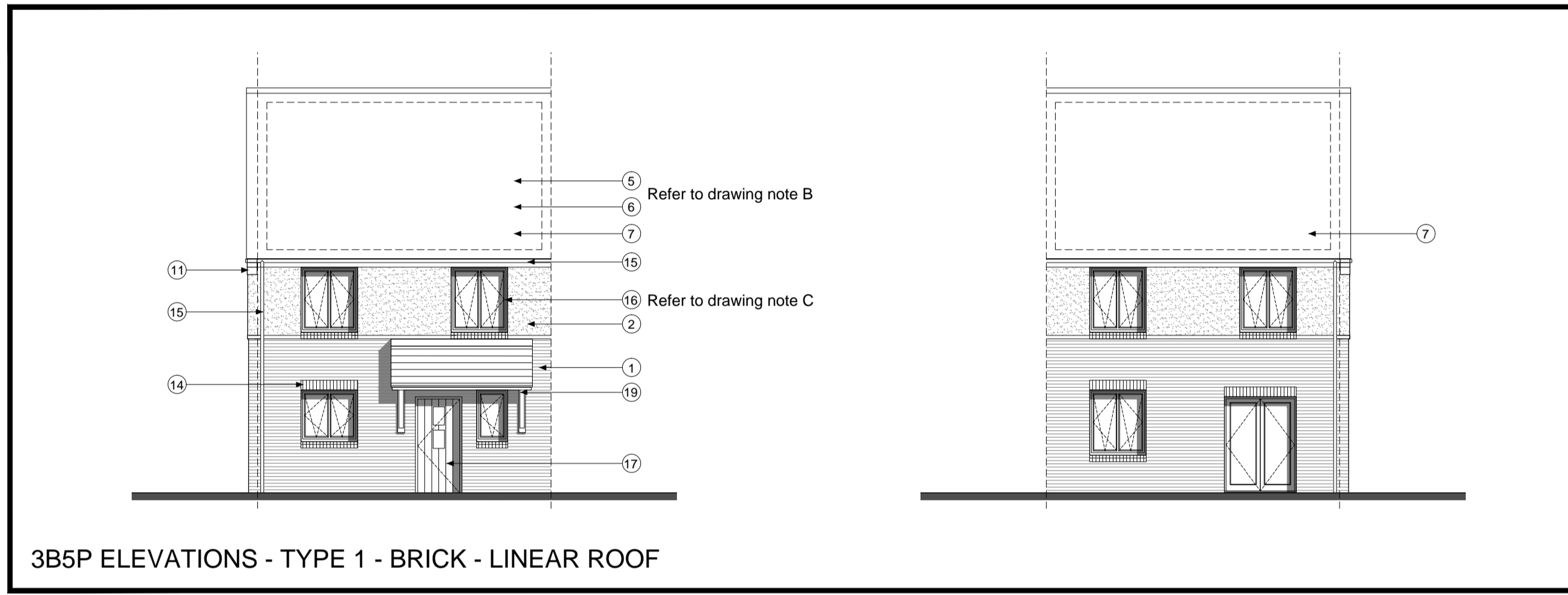
Refer to drawing note A

Plots:
6,9,10,55,65,79,81,85,86,89,91,94,96,98,100,101,102,103,105,108,109,110,113,115,
116,117,121,122,135,136,148,151,159,162,163,172,174,175,176,178,179,188,189,201,202,204

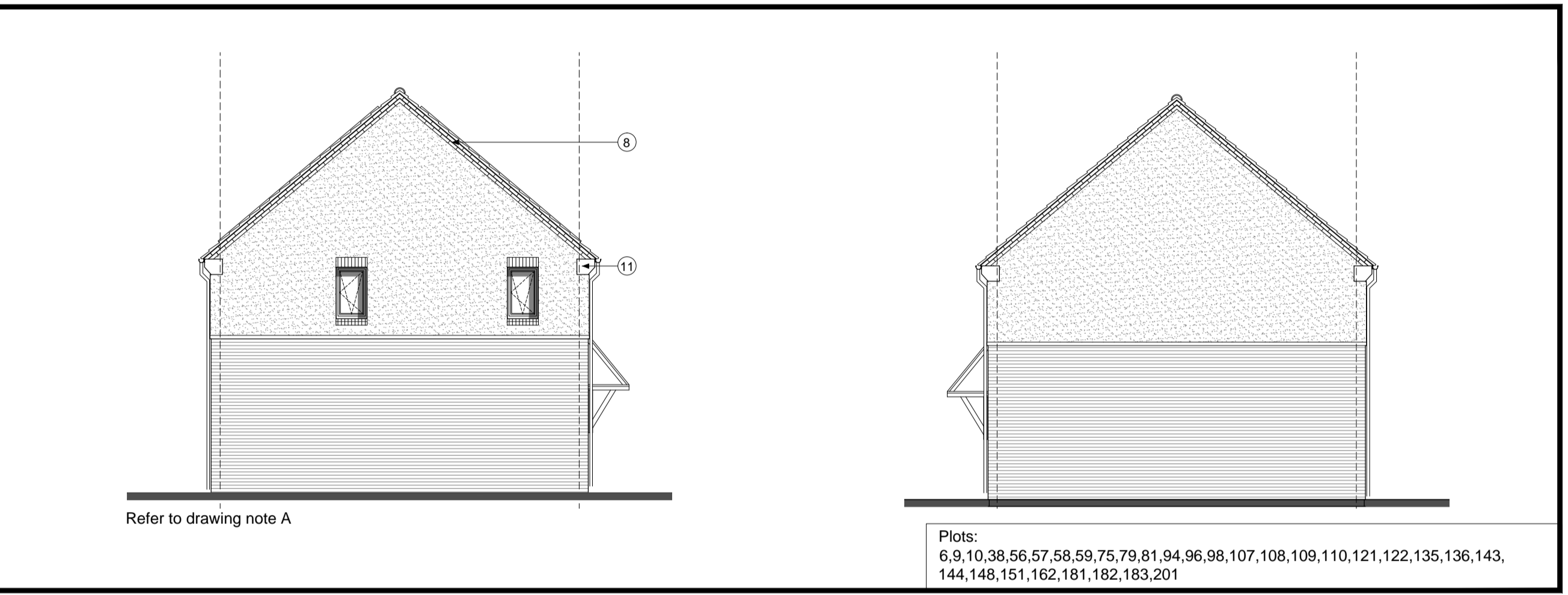


Refer to drawing note A

Plots:
38,56,57,58,59,60,69,70,71,75,107,124,125,126,127,132,133,134,139,140,
141,142,143,144,158,181,182,183,192,193,194

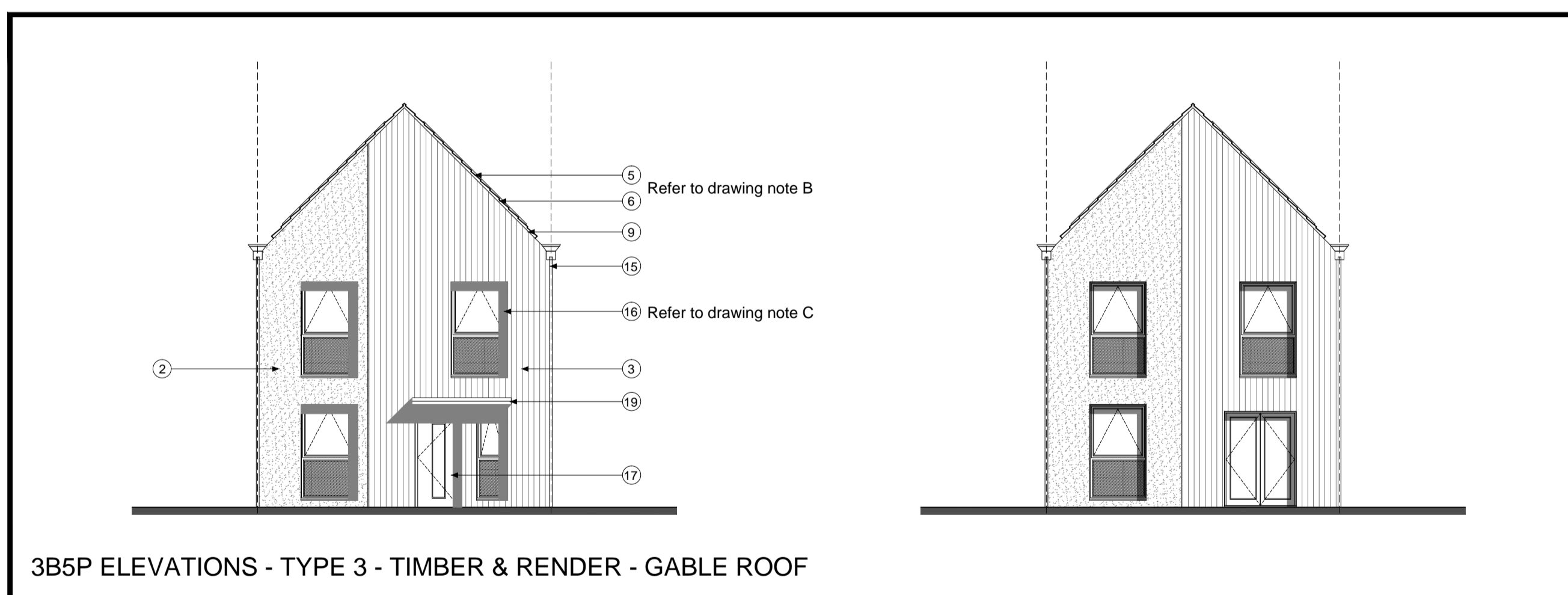


3B5P ELEVATIONS - TYPE 1 - BRICK - LINEAR ROOF

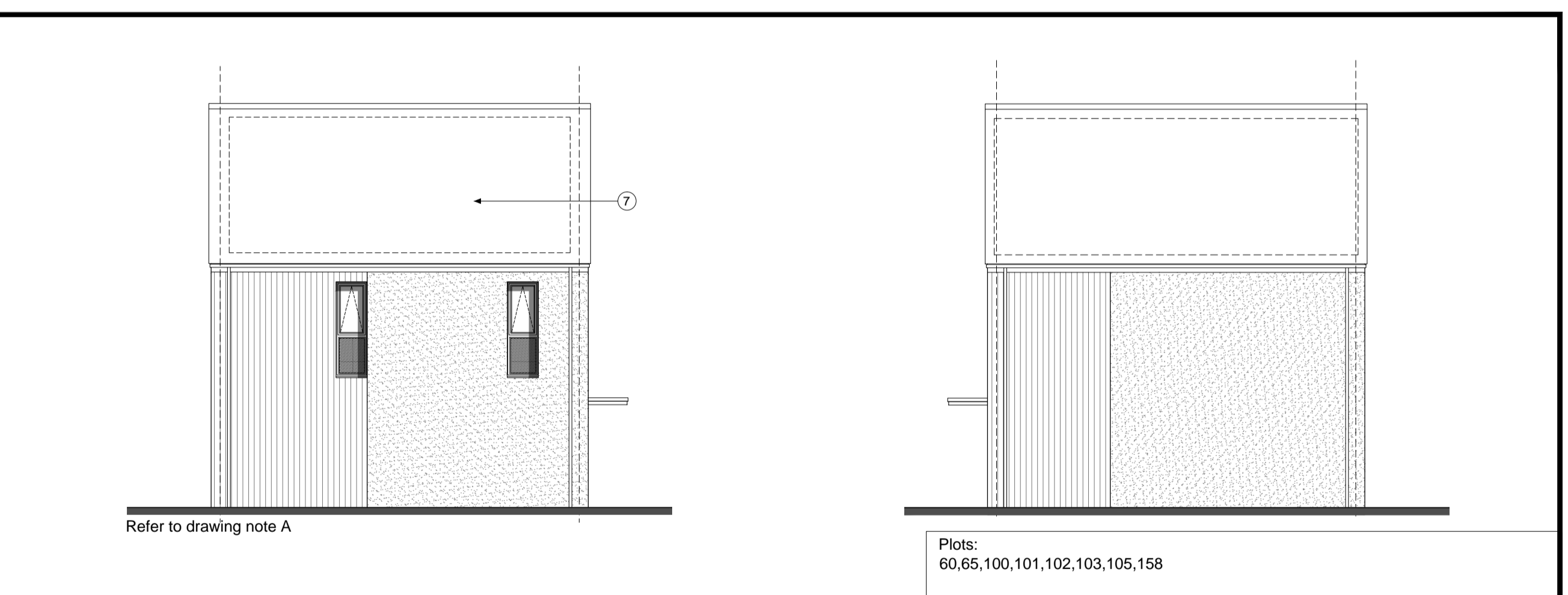


Refer to drawing note A

Plots:
6,9,10,38,56,57,58,59,75,79,81,94,96,98,107,108,109,110,121,122,135,136,143,
144,148,151,162,181,182,183,201

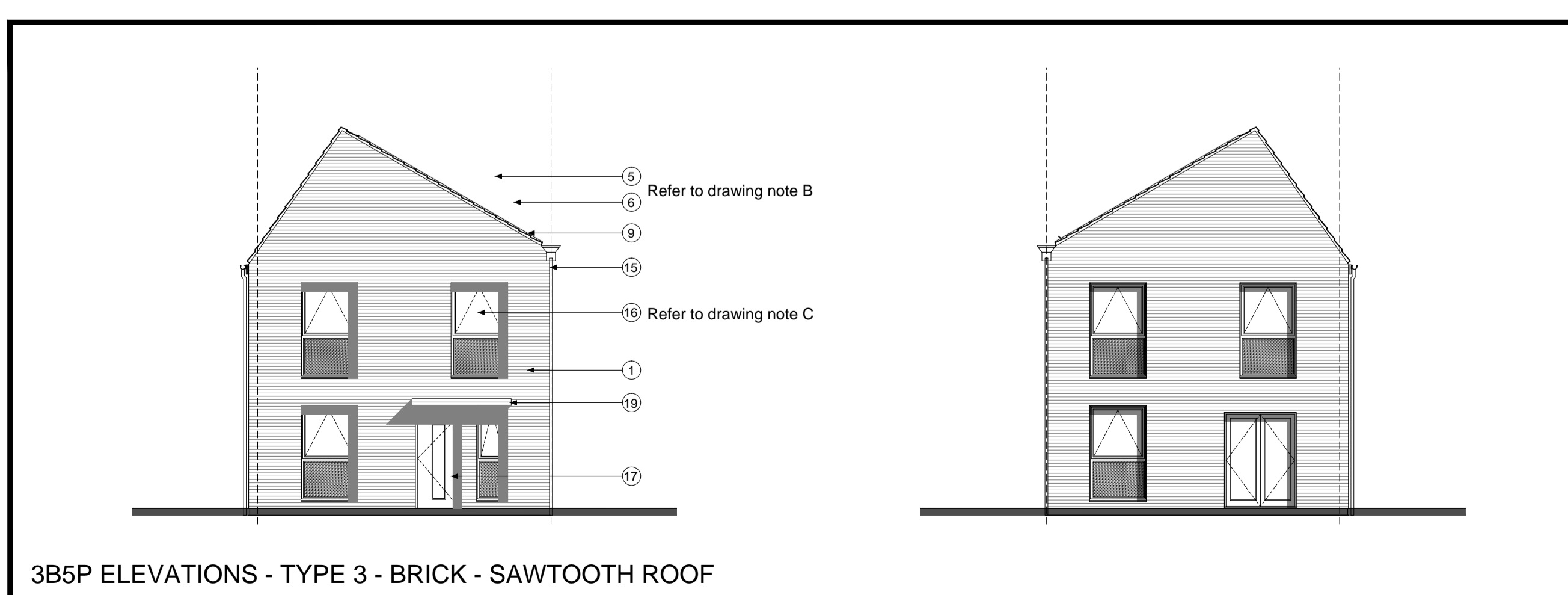


3B5P ELEVATIONS - TYPE 3 - TIMBER & RENDER - GABLE ROOF

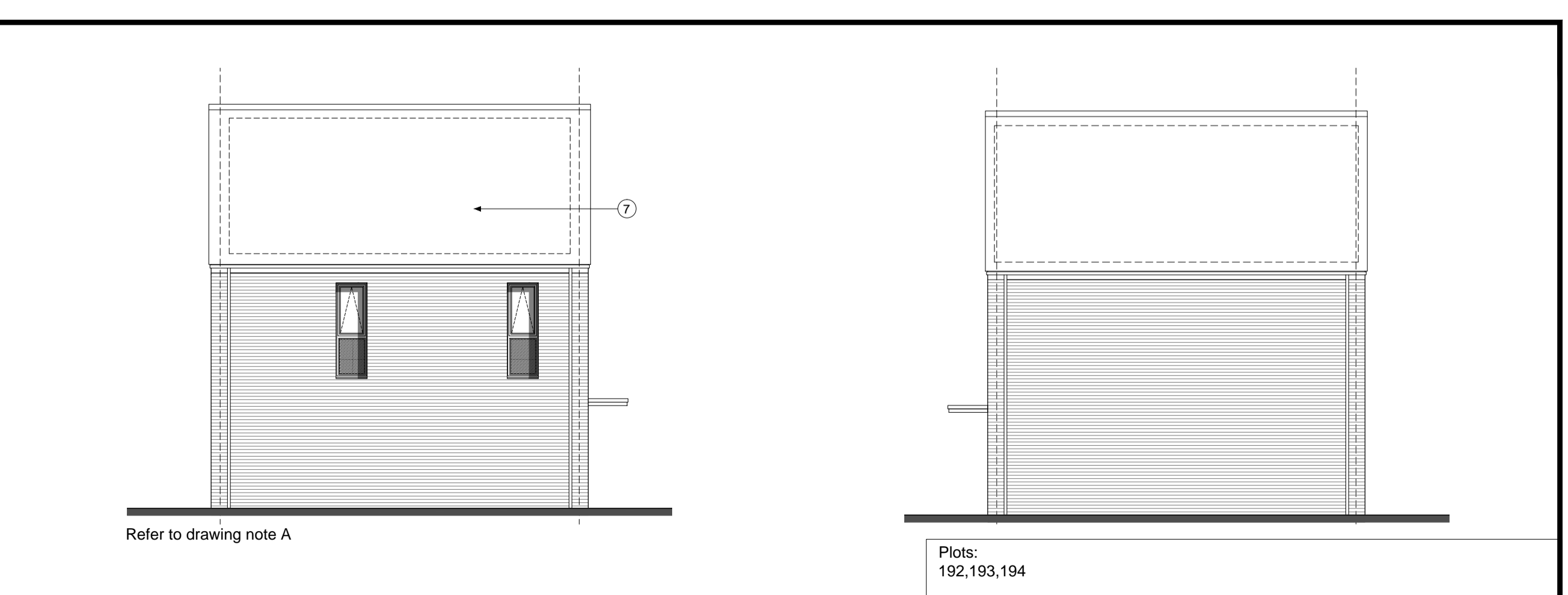


Refer to drawing note A

Plots:
60,65,100,101,102,103,105,158



3B5P ELEVATIONS - TYPE 3 - BRICK - SAWTOOTH ROOF



Refer to drawing note A

Plots:
192,193,194