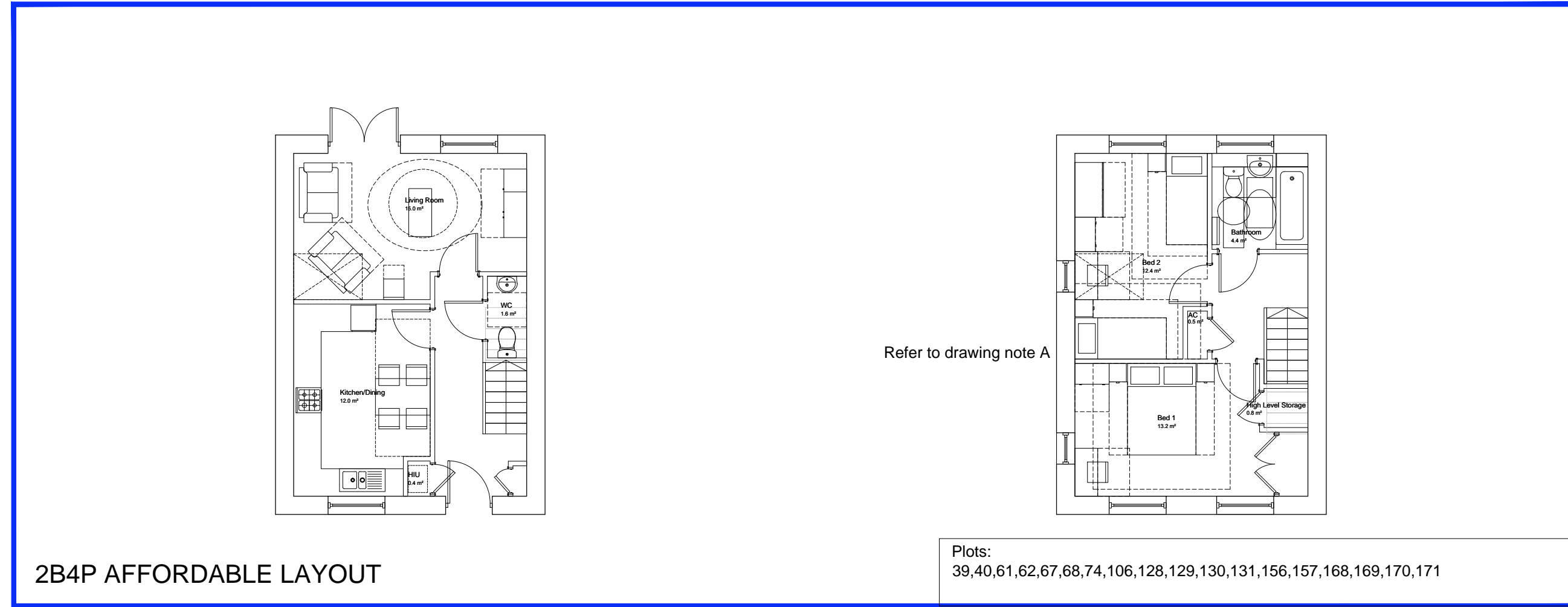
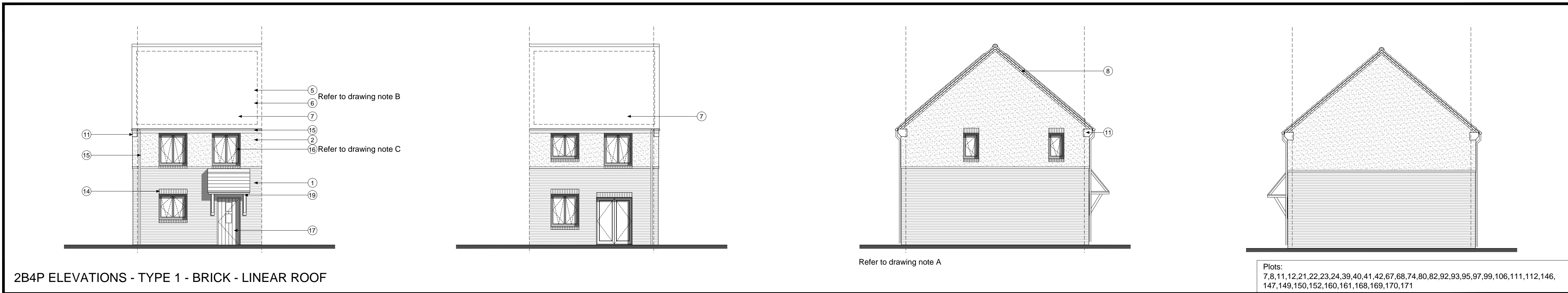


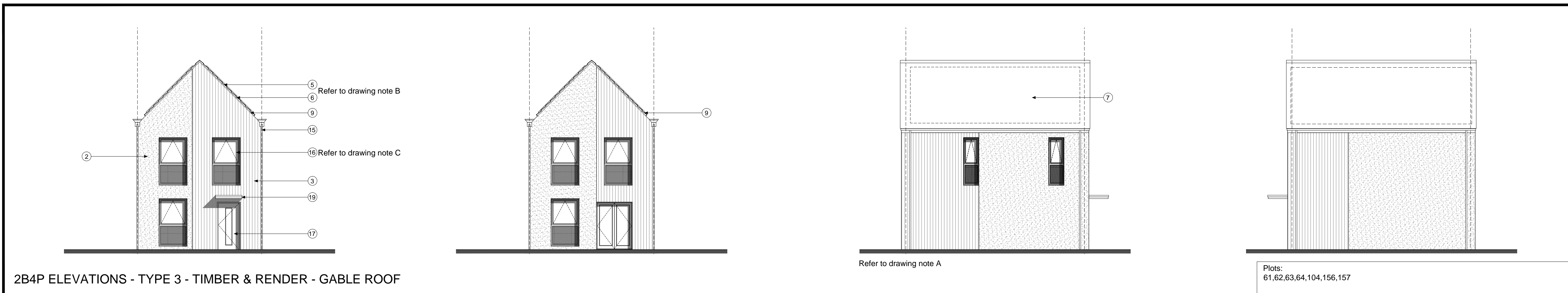
2B4P PRIVATE LAYOUT



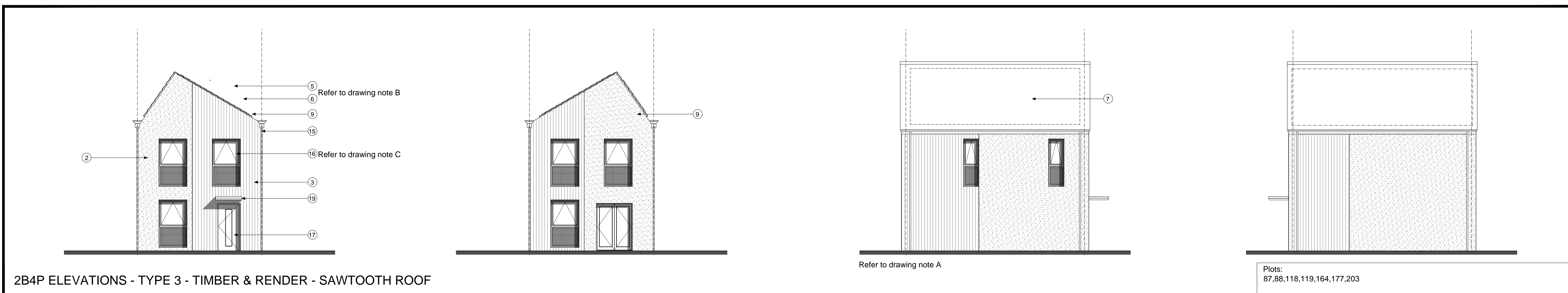
2B4P AFFORDABLE LAYOUT



2B4P ELEVATIONS - TYPE 1 - BRICK - LINEAR ROOF



2B4P ELEVATIONS - TYPE 3 - TIMBER & RENDER - GABLE ROOF



2B4P ELEVATIONS - TYPE 3 - TIMBER & RENDER - SAWTOOTH ROOF

notes

- The contractor is responsible for checking dimensions, tolerances and references. Any discrepancy to be verified with the Architect before proceeding with the works.
- Where an item is covered by drawings to different scales the larger scale drawing is to be worked to.
- Do not scale drawing. Figured dimensions to be worked to in all cases.

CDM Regulations 2007

ALL current drawings and specifications for the project must be read in conjunction with the Designer's Hazard and Environmental Assessment Record.

Handed Plots:
21,22,39,40,92,106,111,112,114,146,168,169,170,171,173

2B4P Area: 76.6m2

NOTE A: Gable windows will only apply to plots indicated on drawing: 'AA2699(3)_2007'

NOTE B: For individual plot roof materials refer to drawing 'AA2699(3)2006'

NOTE C: All windows to bathrooms are to be obscured

Materials and details key

- Face brickwork - Type 1, red multi, Type 3, red multi, Enriched, red multi, buff multi and grey multi.
- Through colour render, colour ivory
- Vertical timber cladding (Thermwood, with natural untreated finish)
- Coursed stonework (Backstone Natural Light weathered tumbled, laid in random course heights - no jumpers)
- Makley 'Riverdale' composite slate and ridge tile. Refer to drawing 'AA2699(3)2006'
- Backstone Cotswold roof tile and ridge. Refer to drawing 'AA2699(3)2006'
- South facing roof slope designated for PV. Refer to drawing 'AA2699(3)2006'
- Clipped verge detail. One course face brickwork laid stretcher bond with natural colour bucket handle mortar joints; brick type / colour: 'Isoblock Capital Multi Sock'
- Clipped verge detail
- Reconstituted stone corbel unit (colour: Portland)
- Brickwork corbel, type / colour to match face brickwork
- Projecting reconstituted stone string course (colour: Portland) to divide base facing material from render above
- Re-constituted stone (colour: Portland) heads with drip detail and stacked sill
- Brickwork window heads and cant brick cills; type / colour to match face brickwork
- UPVC gutters & down pipes; colour: black. Fascia and soffit board colour: white (type 1) grey (type 3) black (enriched)
- High performance triple glazed timber window; design to match house type (colour type 1: white, type 3: grey, enriched: black)
- 10 storey GWP (SG range) (colour type 1: black, type 3: grey, enriched: black)
- Glazed side panel / fanlight to match door
- Entrance canopy; style to match dwelling type and colour to match doors and windows.
- Up and over garage door; colour to match windows
- Double glazed roof light
- Inset horizontal timber cladding (Thermwood, with natural untreated finish)
- Standing seam roof
- Grey powder coated metal spandrel panels
- Double height opening with glazing and grey powder coated metal spandrel panels. Colour: grey
- Brick sills to match the brick of the main building

23-06-17 C Plot 173 handed following comments from CDC SDT/BB

26-08-16 B Updates in line CDC comments dated: 27-07-16 & 23-08-16. ... SW/MH

20-06-16 A Amendments in line with CDC comments 22-02-16. Reduced number of Enriched units ...SW/MH

date	rev	revision/author/checker
19-10-15	-	First Issue. Planning

client
A2 Dominion

purpose of issue
Planning

project
Bicester Eco Town Phases 3&4

drawing
2B4P House - Sheet 1 Private & Affordable Layouts With all elevation treatment types

drawing no	rev
AA2699(3)/2100	C

drawn	MR	checked	SW
scale @ A1/A3	1:100	date	Oct 2015

PRP Architects ©
10 Lindsey Street
Smithfield
London
E1C1 9HP
T +44 (0)20 7653 1200
F +44 (0)20 7653 1201
ton.prp@prparchitects.co.uk

