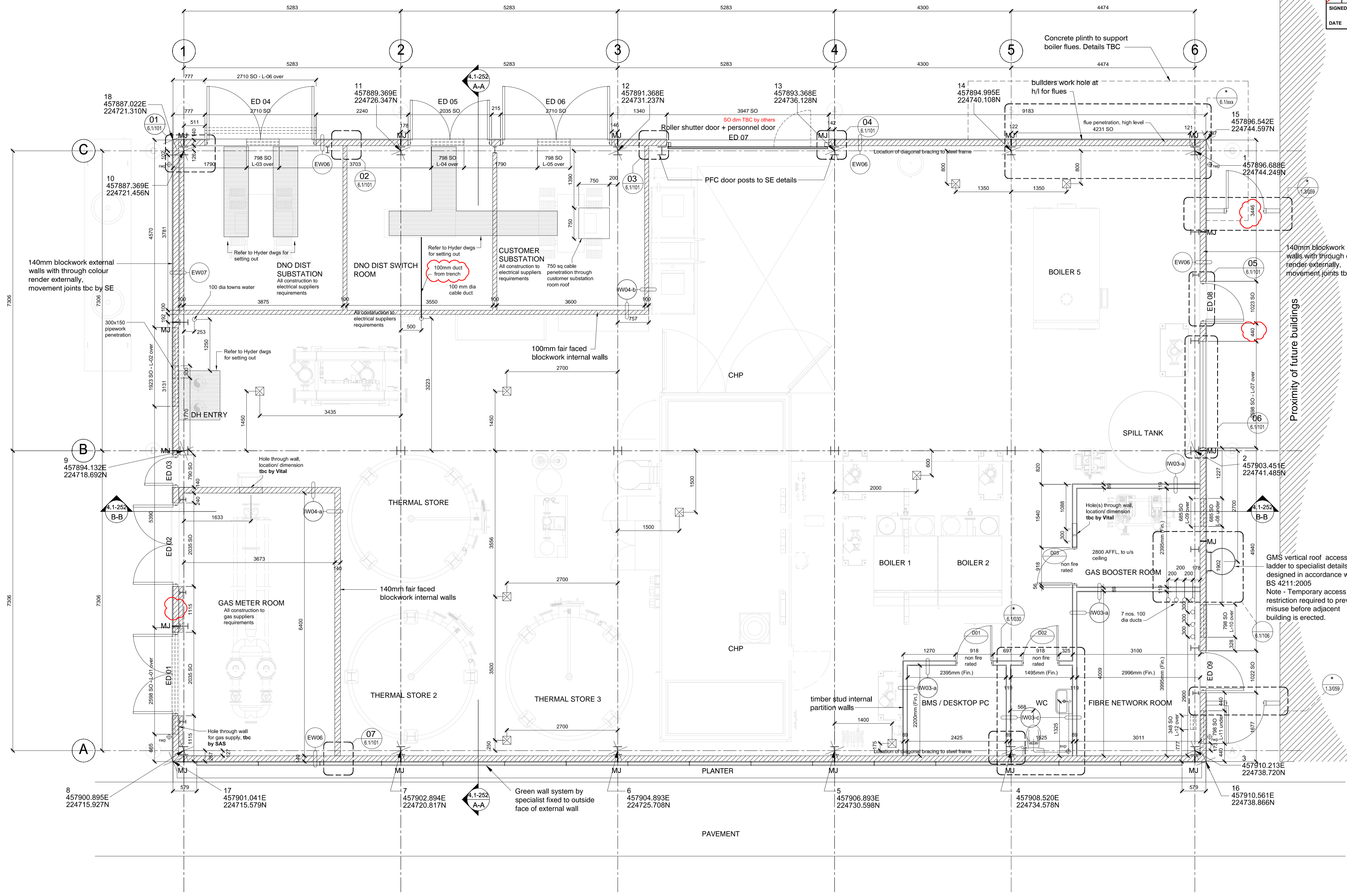
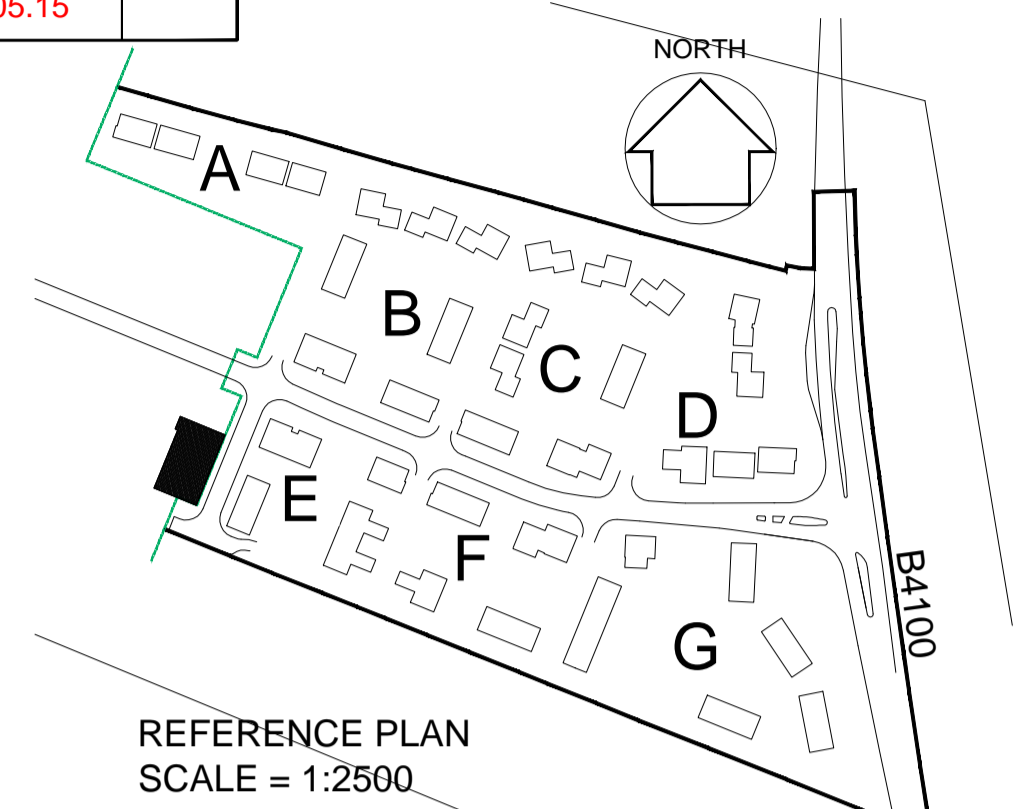


notes

- The contractor is responsible for checking dimensions, tolerances and references. Any discrepancy to be verified with the Architect before proceeding with the works.
- Where an item is covered by drawings to different scales the larger scale drawing is to be worked to.
- Do not scale drawing. Figured dimensions to be worked to in all cases.

CDM Regulations 2007

ALL current drawings and specifications for the project must be read in conjunction with the Designer's Hazard and Environmental Assessment Record.



Note
 co ordinates taken from Hyder consulting, drawing 010-UA001881 Issue 04 Station Schedule

Station	Easting	Northing	Level	Notes
HY01	457891.132E	224744.249N	85.541	NAL
HY02	457893.368E	224744.249N	85.145	NAL
HY03	457893.368E	224744.249N	85.145	NAL
HY04	457893.368E	224744.249N	85.145	NAL
HY05	457893.368E	224744.249N	85.145	NAL
HY06	457893.368E	224744.249N	85.145	NAL
HY07	457893.368E	224744.249N	85.145	NAL
HY08	457893.368E	224744.249N	85.145	NAL
HY09	457893.368E	224744.249N	85.145	NAL
HY10	457893.368E	224744.249N	85.145	NAL
HY11	457893.368E	224744.249N	85.145	NAL
HY12	457893.368E	224744.249N	85.145	NAL

Co-ordinate Schedule

Point No.	Easting	Northing
1	457893.368E	224744.249N
2	457903.451E	224741.485N
3	457910.213E	224738.720N
4	457908.520E	224734.578N
5	457906.893E	224730.598N
6	457904.893E	224725.708N
7	457902.894E	224720.817N
8	457900.895E	224715.927N
9	457894.132E	224718.692N
10	457887.369E	224721.456N
11	457889.369E	224726.347N
12	457891.368E	224731.237N
13	457893.368E	224736.128N
14	457894.995E	224740.108N
15	457896.542E	224744.597N
16	457910.561E	224738.866N
17	457901.041E	224715.579N
18	457887.022E	224721.310N

- KEY
- L02 Louvre Refs
 - ED01 External door refs
 - 200 x 200 floor gully
 - Hole in slab
- 06-05-2015 H Location for door ED08 amended, inner block wall to gas meter room relocated towards outer leaf block to omit cavity, all amended to WDH comments. Notes amended; c/lrs
- 28-04-2015 G Secondary steels locations amended, as clouded. Door + louvre SO dims amended to brick dims; c/lrs
- 30-03-2015 F Slab penetrations added, minor amendments to Gas Booster room dims, additional movement joints added; c/lrs
- 13-03-2015 E Northings + Eastings added for corners of blockwork. Plinths omitted, note to access ladder amended. Internal layout updated in line with Vital dwg. Issued for construction; c/lrs

date	rev	revision/author/checker

purpose of issue
CONSTRUCTION

project
BICESTER ECO TOWN EXEMPLAR SITE

drawing
ENERGY CENTRE Ground Floor Plan

drawing no AA2699C/4.1/350	rev H
drawn DGH	checked MDB
scale @ A1 1:50	date Jan 2013

Note
 This drawing to be read in conjunction with all relevant structural engineers, mechanical and electrical engineers drawings.

All **dims to structure**, unless otherwise noted

For details of equipment in this area see Vital Energy drawing M-372-C-13

For details of substructure and foundation details please refer to drawing UA004014-0100-3
 For details of superstructure and roof please refer to drawing UA004014-0101 & 0102
 For details of internal slabs, walls & ducts please refer to drawing UA004014-0103

All construction and components to comply with any additional requirements of utilities suppliers and end users