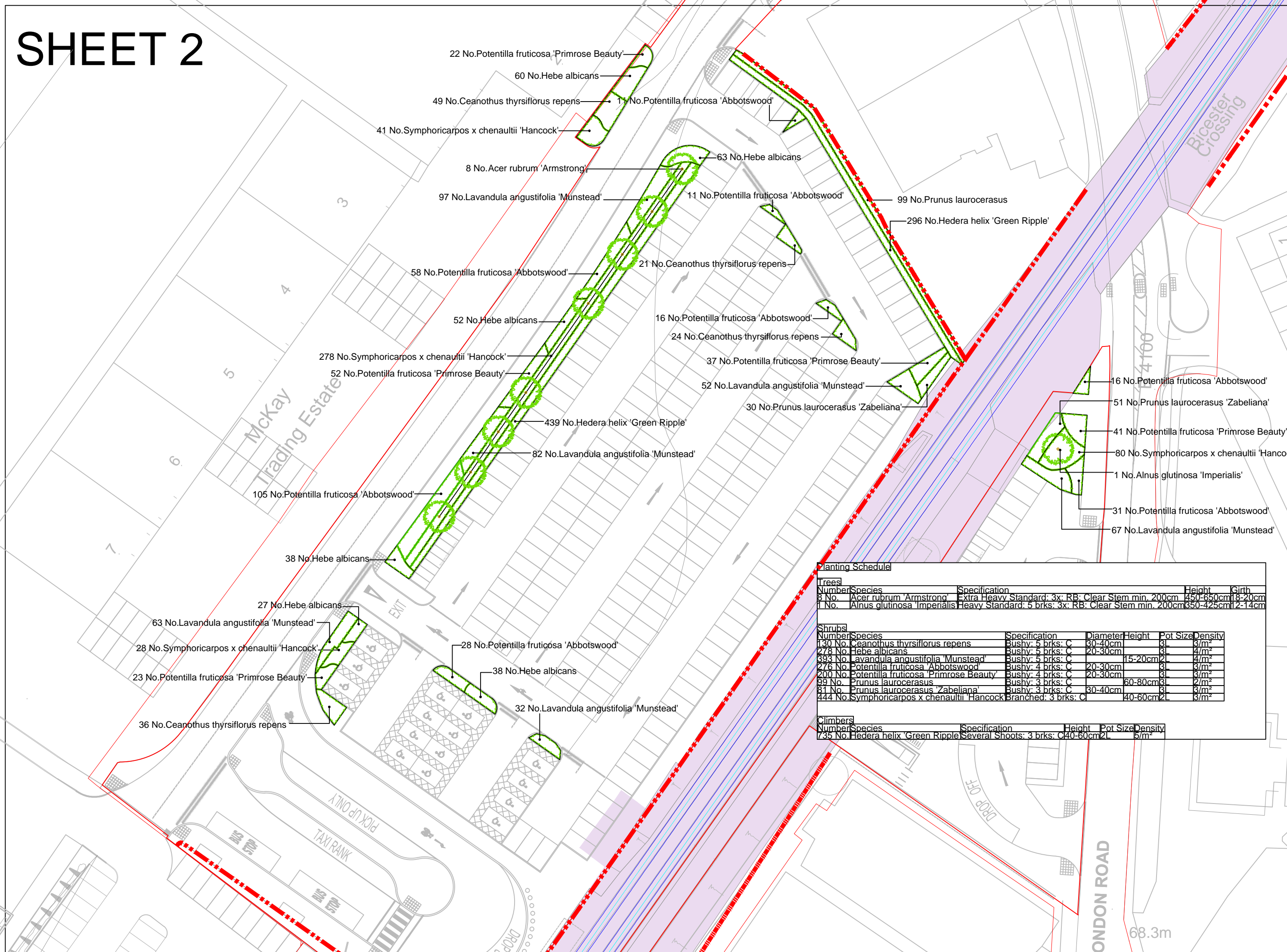


# SHEET 2



| Number | Species                          | Specification                                       | Height | Sp. Sp. |
|--------|----------------------------------|---|--------|---------|
| 8      | No. Acer rubrum 'Armstrong'      | Extra Heavy Standard 4x RB Clear Stem min. 200cm    | 8-10m  | 8/240cm |
| 1      | No. Alnus glutinosa 'Imperialis' | Heavy Standard 3 trunks 4x RB Clear Stem min. 200cm | 8-10m  | 8/240cm |

| Number | Species                                    | Specification                              | Height | Sp. Sp. |
|--------|--|--|--------|---------|
| 8/9    | No. Ceanothus thyrsiflorus repens          | Bushy 4 trunks 4x RB Clear Stem min. 200cm | 6-8m   | 8/240cm |
| 21     | No. Ceanothus thyrsiflorus repens          | Bushy 4 trunks 4x RB Clear Stem min. 200cm | 6-8m   | 8/240cm |
| 24     | No. Ceanothus thyrsiflorus repens          | Bushy 4 trunks 4x RB Clear Stem min. 200cm | 6-8m   | 8/240cm |
| 27     | No. Ceanothus thyrsiflorus repens          | Bushy 4 trunks 4x RB Clear Stem min. 200cm | 6-8m   | 8/240cm |
| 28     | No. Ceanothus thyrsiflorus repens          | Bushy 4 trunks 4x RB Clear Stem min. 200cm | 6-8m   | 8/240cm |
| 37     | No. Potentilla fruticosa 'Primrose Beauty' | Bushy 4 trunks 4x RB Clear Stem min. 200cm | 6-8m   | 8/240cm |
| 52     | No. Lavandula angustifolia 'Munstead'      | Bushy 4 trunks 4x RB Clear Stem min. 200cm | 6-8m   | 8/240cm |
| 63     | No. Lavandula angustifolia 'Munstead'      | Bushy 4 trunks 4x RB Clear Stem min. 200cm | 6-8m   | 8/240cm |
| 82     | No. Lavandula angustifolia 'Munstead'      | Bushy 4 trunks 4x RB Clear Stem min. 200cm | 6-8m   | 8/240cm |
| 105    | No. Potentilla fruticosa 'Abbotswood'      | Bushy 4 trunks 4x RB Clear Stem min. 200cm | 6-8m   | 8/240cm |
| 16     | No. Potentilla fruticosa 'Abbotswood'      | Bushy 4 trunks 4x RB Clear Stem min. 200cm | 6-8m   | 8/240cm |
| 51     | No. Prunus laurocerasus 'Zabeliana'        | Bushy 4 trunks 4x RB Clear Stem min. 200cm | 6-8m   | 8/240cm |
| 41     | No. Potentilla fruticosa 'Primrose Beauty' | Bushy 4 trunks 4x RB Clear Stem min. 200cm | 6-8m   | 8/240cm |
| 80     | No. Symphoricarpos x chenaultii 'Hancock'  | Bushy 4 trunks 4x RB Clear Stem min. 200cm | 6-8m   | 8/240cm |
| 1      | No. Alnus glutinosa 'Imperialis'           | Bushy 4 trunks 4x RB Clear Stem min. 200cm | 6-8m   | 8/240cm |
| 31     | No. Potentilla fruticosa 'Abbotswood'      | Bushy 4 trunks 4x RB Clear Stem min. 200cm | 6-8m   | 8/240cm |
| 67     | No. Lavandula angustifolia 'Munstead'      | Bushy 4 trunks 4x RB Clear Stem min. 200cm | 6-8m   | 8/240cm |

| Rev. | Date     | Amendment   | Drawn | Chkd. | Appd. |
|------|----------|---|-------|-------|-------|
| P3   | 19.07.14 | Drawing amended in line with revised layout         | EB    | SF    | SF    |
| P2   | 18.07.14 | Drawing amended in line with revised layout         | ED    | SF    | SF    |
| P1   | 15.07.14 | Drawing Number revision to BCAA DRG-121078CRP01-PDF | GA    | SF    | SF    |
| PO   | 03.07.14 | FIRST ISSUE   | GA    | SF    | SF    |

18 Frogmore Road, Herts, HP3 9RT. Tel: +44 (0) 1442 437500 Fax: +44 (0) 1442 437500 Email: info@rsk.co.uk Web: www.rsk.co.uk

Client  
**CARILLION BUCKINGHAM  
JOINT VENTURE**

Project Title  
**EAST WEST RAIL  
PHASE 1**

Drawing Title  
**BICESTER TOWN STATION  
SOFT LANDSCAPE  
SHEET 1 - OVERALL SITE PLAN**

| Drawn | Date     | Checked | Date     | Approved | Date     |
|-------|----------|---------|----------|----------|----------|
| GA    | 02.07.14 | SF      | 02.07.14 | SF       | 03.07.14 |

| Scale | Orig Size | Dimensions |
|-------|-----------|------------|
| 1:500 | A1        | METRES     |

| Project No. | Drawing File       |
|-------------|--------------------|
| 121097      | 121097/04/02/03/02 |

| Drawing No.          | Rev. |
|----------------------|------|
| RSK-DRG-BTS-P001-PDF | P4   |

