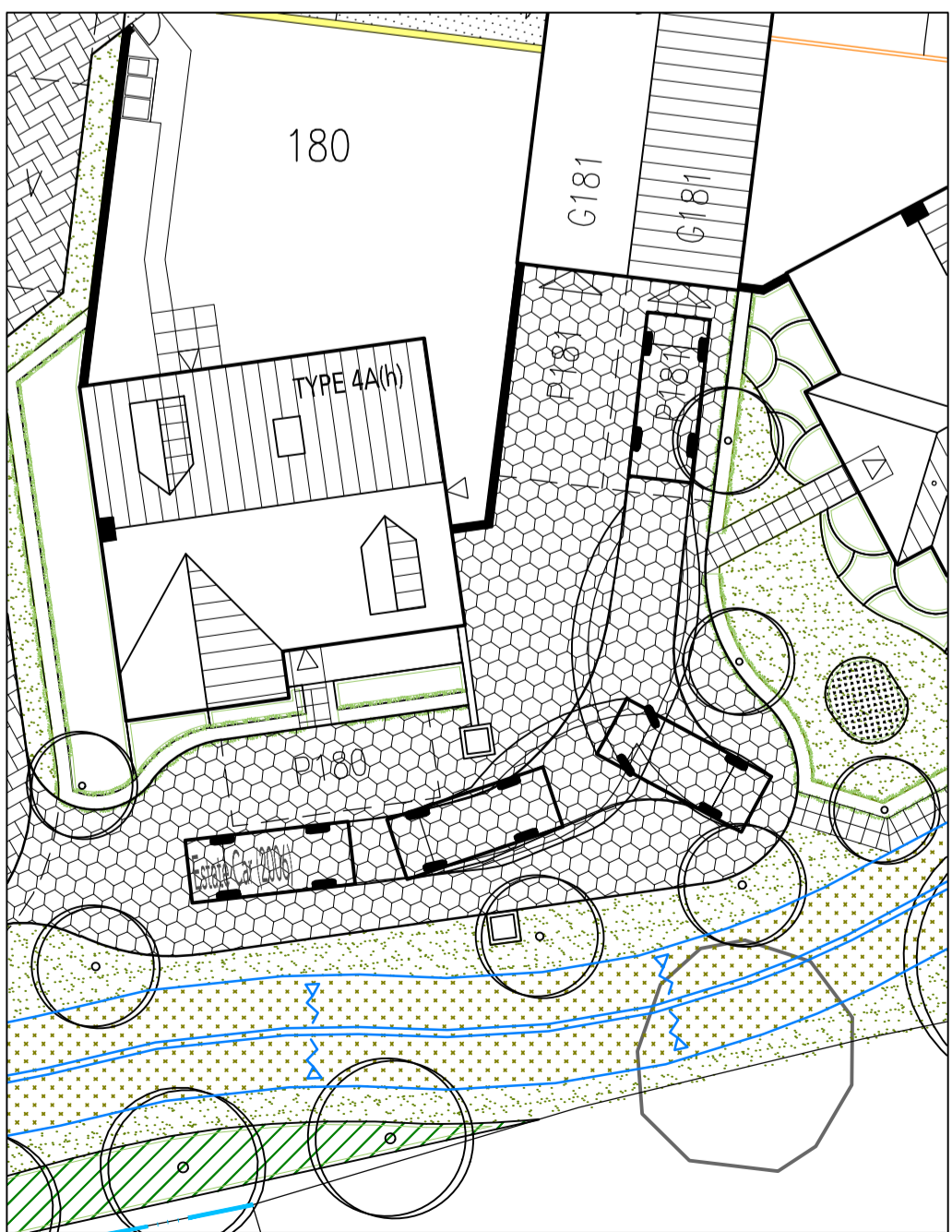
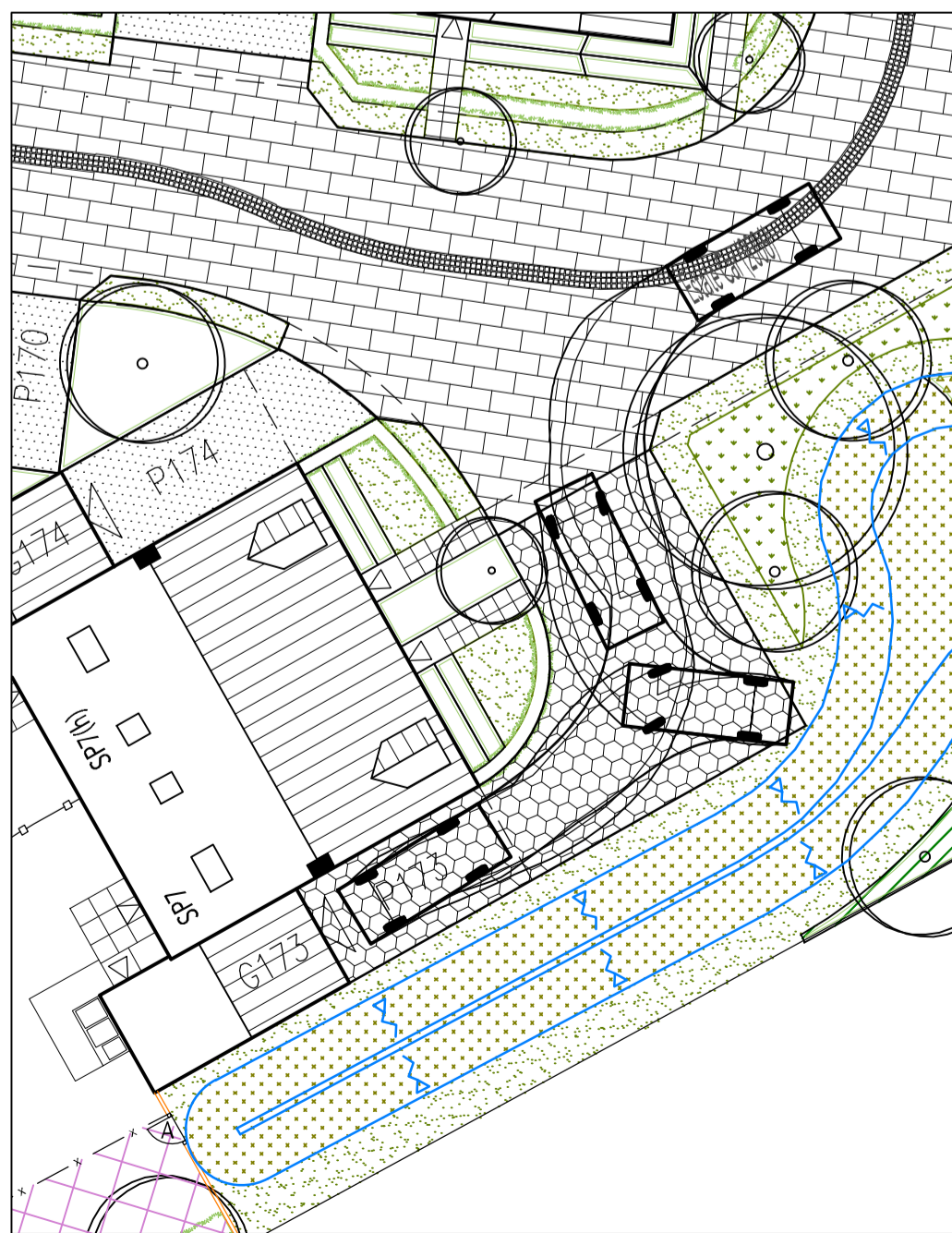
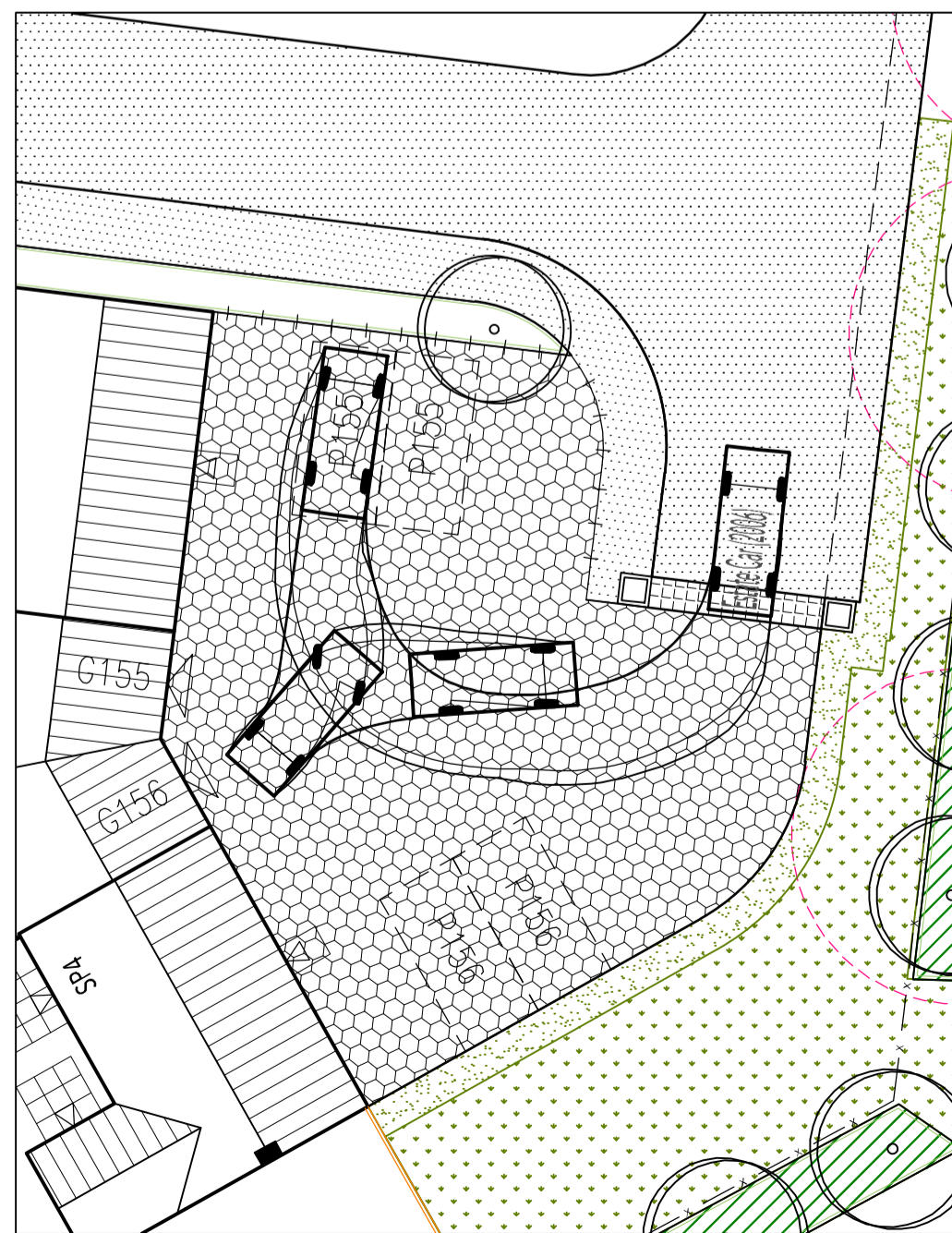




DORCHESTER GROUP

REVISIONS:

- A. 2015-06-30. Plots 160-161, 170-172, 178-181, 183-185, 210 & 223 amended at client's request. Verge widths changed from 1.0m to 0.80m following engineer's comments. Tracking updated to suit. PVA
- B. 2015-11-19. Visitor space by Plot 179 removed. Road by Plots 166-179 amended. Curves added in lieu of chamfers in the road by Plots 192 and 200. DJE
- C. 2015-12-09. Maintenance strips added along the southern boundary, additional chimneys added to plots 158, 202 & 204-206, fences changed to walls on plots 167-171, 176-178, 185, 198, 201 & 206, wall & trellis added to the parking for plot 180 and timber-line rail added around the parking area for plot 155 - tracking unaffected. MED



LEGEND

Dennis Eagle Olympus Smooth Body RCV EuroSW 6x2RS

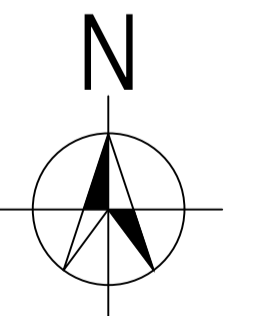
Dennis Eagle Olympus Smooth Body RCV EuroSW 6x2RS

Overall Length	11.390m
Overall Width	2.530m
Overall Body Height	3.751m
Min Body Ground Clearance	0.304m
Track Width	2.500m
Lock-to-lock time	4.00s
Curb to Curb Turning Radius	7.500m

Estate Car (2006)

Estate Car (2006)

Overall Length	4.710m
Overall Width	1.804m
Overall Body Height	1.442m
Min Body Ground Clearance	0.207m
Max Track Width	1.756m
Lock-to-lock time	4.00s
Curb to Curb Turning Radius	5.950m



VEHICLE TRACKING LAYOUT

SCALE: 1:200 @ A1

DATE: MAY 2015
DRAWN: DJE

DRAWING TITLE: VEHICLE TRACKING LAYOUT
DRAWING NO.: 0521-PH4-5B-105

THE OLD BREWERY, LODWAY, PILL, BRISTOL BS20 0DH
t:01275 813380 f:01275 813381 e:admin@focusdp.com

