

**LEGEND**

- Existing Vegetation
- Proposed root barrier (Green Blue Urban Root 2000 or similar approved)
- Proposed Trees in hard landscape
- Proposed Trees in soft landscape
- Proposed Specimens
- Hedging
- Shrub/herbaceous planting
- Bulbous planting
- Grass: Wildflower
- Grass: Mown

**GENERAL NOTES**

This drawing is to be used for planting information only, and is subject to alteration through changes to the site layout or until approved by the area designer.

Any species substitution by the contractor must be verified with the Landscape Architect through the Job Architect.

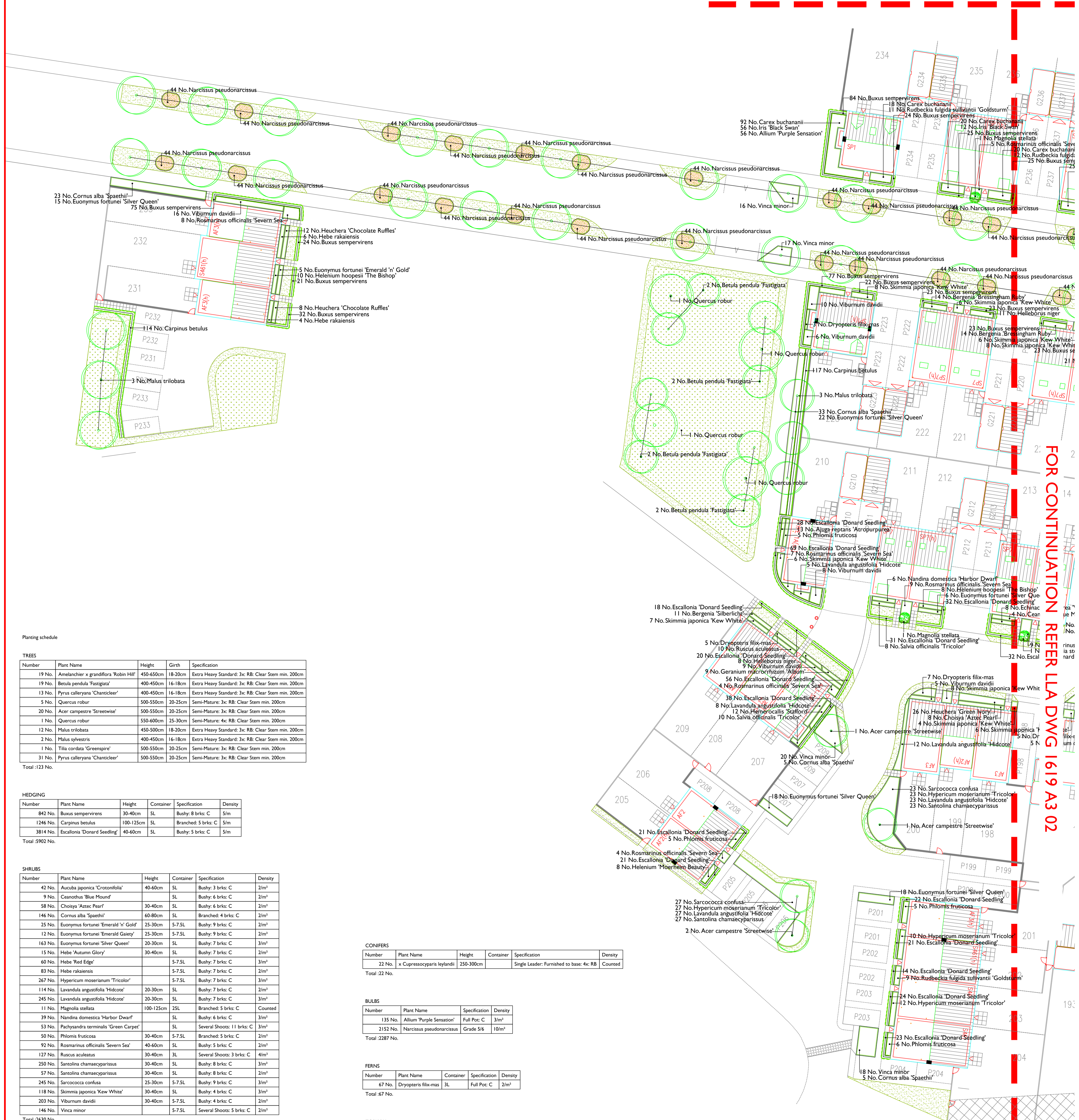
This layout must be checked in accordance with HWS Standards 2013 (Chapter 4.2 - Building Near Trees & Chapter 9.2 - Drives, Paths and Landscaping) by the Regional Engineer prior to implementation.

Excavations: Contractors must ensure that they have full information relating to service and drainage positions before undertaking any excavations.

Root barriers to be used in association with tree planting adjacent to kerbs / services / footpaths etc. (Greenleaf ReRoot products or similar application, in accordance with manufacturers instructions).

NOTES: Please note all planting mixes should be planted as follows:  
Shrubs/Graasses to be planted in groups of 3-5 with herbaceous to be planted randomly throughout mix area.

**FOR CONTINUATION REFER LLA DWG I619 A3 04**



**FOR CONTINUATION REFER LLA DWG I619 A3 02**

**TREES**

| Number | Plant Name                             | Height    | Girth   | Specification                                       |
|--------|--|-----------|---------|---|
| 19 No. | Amelanchier x grandiflora 'Robin Hill' | 450-650cm | 18-20cm | Extra Heavy Standard: 3x: RB: Clear Stem min. 200cm |
| 19 No. | Betula pendula 'Fastigiata'            | 400-450cm | 16-18cm | Extra Heavy Standard: 3x: RB: Clear Stem min. 200cm |
| 13 No. | Pyrus calleryana 'Chanticleer'         | 400-450cm | 16-18cm | Extra Heavy Standard: 3x: RB: Clear Stem min. 200cm |
| 5 No.  | Quercus robur                          | 500-550cm | 20-25cm | Semi-Mature: 3x: RB: Clear Stem min. 200cm          |
| 20 No. | Acer campestre 'Streetwise'            | 500-550cm | 20-25cm | Semi-Mature: 3x: RB: Clear Stem min. 200cm          |
| 1 No.  | Quercus robur                          | 550-600cm | 25-30cm | Semi-Mature: 4x: RB: Clear Stem min. 200cm          |
| 12 No. | Malus trilobata                        | 450-500cm | 18-20cm | Extra Heavy Standard: 3x: RB: Clear Stem min. 200cm |
| 2 No.  | Malus sylvestris                       | 400-450cm | 16-18cm | Extra Heavy Standard: 3x: RB: Clear Stem min. 200cm |
| 1 No.  | Tilia cordata 'Greenspire'             | 500-550cm | 20-25cm | Semi-Mature: 3x: RB: Clear Stem min. 200cm          |
| 31 No. | Pyrus calleryana 'Chanticleer'         | 500-550cm | 20-25cm | Semi-Mature: 3x: RB: Clear Stem min. 200cm          |

**HEDGING**

| Number   | Plant Name                  | Height    | Container | Specification       | Density |
|----------|-----------------------------|-----------|-----------|---------------------|---------|
| 842 No.  | Buxus sempervirens          | 30-40cm   | SL        | Bushy: 8 brks: C    | 5/m     |
| 1246 No. | Carpinus betulus            | 100-125cm | SL        | Branched: 5 brks: C | 5/m     |
| 3814 No. | Escallonia 'Donard Seeding' | 40-60cm   | SL        | Bushy: 5 brks: C    | 5/m     |

**SHRUBS**

| Number  | Plant Name                            | Height    | Container                 | Specification              | Density |
|---------|---------------------------------------|-----------|---------------------------|----------------------------|---------|
| 42 No.  | Aucuba japonica 'Crotonifolia'        | 40-60cm   | SL                        | Bushy: 3 brks: C           | 2/m²    |
| 9 No.   | Ceanothus 'Blue Mound'                | SL        | SL                        | Bushy: 6 brks: C           | 2/m²    |
| 58 No.  | Choisya 'Aztec Pearl'                 | 30-40cm   | SL                        | Bushy: 6 brks: C           | 2/m²    |
| 146 No. | Cornus alba 'Spaethii'                | 60-80cm   | SL                        | Branched: 4 brks: C        | 2/m²    |
| 25 No.  | Euonymus fortunei 'Emerald 'n' Gold'  | 25-30cm   | 5-7.5L                    | Bushy: 9 brks: C           | 2/m²    |
| 12 No.  | Euonymus fortunei 'Emerald Gaiety'    | 25-30cm   | 5-7.5L                    | Bushy: 9 brks: C           | 2/m²    |
| 163 No. | Euonymus fortunei 'Silver Queen'      | 20-30cm   | SL                        | Bushy: 7 brks: C           | 3/m²    |
| 15 No.  | Hebe 'Autumn Glory'                   | 30-40cm   | SL                        | Bushy: 7 brks: C           | 2/m²    |
| 60 No.  | Hebe 'Red Edge'                       | 5-7.5L    | 5-7.5L                    | Bushy: 7 brks: C           | 3/m²    |
| 83 No.  | Hebe rakaiensis                       | 5-7.5L    | 5-7.5L                    | Bushy: 7 brks: C           | 2/m²    |
| 267 No. | Hypericum moserianum 'Tricolor'       | 5-7.5L    | 5-7.5L                    | Bushy: 7 brks: C           | 3/m²    |
| 114 No. | Lavandula angustifolia 'Hidcote'      | 20-30cm   | SL                        | Bushy: 7 brks: C           | 2/m²    |
| 245 No. | Lavandula angustifolia 'Hidcote'      | 20-30cm   | SL                        | Bushy: 7 brks: C           | 3/m²    |
| 11 No.  | Magnolia stellata                     | 100-125cm | 2SL                       | Branched: 5 brks: C        | Counted |
| 39 No.  | Nandina domestica 'Harbor Dwarf'      | SL        | SL                        | Bushy: 6 brks: C           | 3/m²    |
| 53 No.  | Pachysandra terminalis 'Green Carpet' | SL        | SL                        | Several Shoots: 11 brks: C | 3/m²    |
| 50 No.  | Philomix fruticosa                    | 30-40cm   | 5-7.5L                    | Branched: 5 brks: C        | 2/m²    |
| 92 No.  | Rosmarinus officinalis 'Severn Sea'   | 40-60cm   | SL                        | Bushy: 5 brks: C           | 2/m²    |
| 127 No. | Ruscus aculeatus                      | 30-40cm   | 3L                        | Several Shoots: 3 brks: C  | 4/m²    |
| 250 No. | Santolina chamaecyparissus            | 30-40cm   | SL                        | Bushy: 8 brks: C           | 3/m²    |
| 57 No.  | Santolina chamaecyparissus            | 30-40cm   | SL                        | Bushy: 8 brks: C           | 2/m²    |
| 245 No. | Sarcococca confusa                    | 25-30cm   | 5-7.5L                    | Bushy: 9 brks: C           | 3/m²    |
| 118 No. | Skimmia japonica 'Kew White'          | 30-40cm   | SL                        | Bushy: 4 brks: C           | 3/m²    |
| 203 No. | Viburnum davidii                      | 30-40cm   | 5-7.5L                    | Several Shoots: 5 brks: C  | 2/m²    |
| 146 No. | Vinca minor                           | 5-7.5L    | Several Shoots: 5 brks: C | 2/m²                       |         |

**HERBACEOUS**

| Number  | Plant Name                               | Container | Specification | Density |
|---------|--|-----------|---------------|---------|
| 75 No.  | Aguga reptans 'Atropurpurea'             | 2L        | Full Pot: C   | 6/m²    |
| 24 No.  | Anemone hepatica 'Prinz Heinrich'        | 3L        | Full Pot: C   | 4/m²    |
| 83 No.  | Bergenia 'Bressingham Ruby'              | 3L        | Full Pot: C   | 5/m²    |
| 101 No. | Bergenia 'Siberlicht'                    | 3L        | Full Pot: C   | 5/m²    |
| 62 No.  | Echinacea purpurea 'White Swan'          | 3L        | Full Pot: C   | 4/m²    |
| 9 No.   | Geranium macrorrhizum 'Album'            | 3L        | Full Pot: C   | 4/m²    |
| 58 No.  | Helenium 'Moerheim Beauty'               | 3L        | Full Pot: C   | 3/m²    |
| 48 No.  | Helenium hoopesii 'The Bishop'           | 3L        | Full Pot: C   | 4/m²    |
| 42 No.  | Helleborus niger                         | 3L        | Full Pot: C   | 4/m²    |
| 26 No.  | Heimerocallis 'Crimson Pirate'           | 3L        | Full Pot: C   | 3/m²    |
| 14 No.  | Heimerocallis 'Golden Chimes'            | 3L        | Full Pot: C   | 3/m²    |
| 12 No.  | Heimerocallis 'Stafford'                 | 3L        | Full Pot: C   | 4/m²    |
| 57 No.  | Heuchera 'Chocolate Ruffles'             | 3L        | Full Pot: C   | 4/m²    |
| 74 No.  | Heuchera 'Green Ivory'                   | 3L        | Full Pot: C   | 4/m²    |
| 47 No.  | Heuchera 'Key Lime Pie'                  | 3L        | Full Pot: C   | 4/m²    |
| 10 No.  | Heuchera micrantha 'Palace Purple'       | 3L        | Full Pot: C   | 4/m²    |
| 189 No. | Iris 'Black Swan'                        | 3L        | Full Pot: C   | 3/m²    |
| 85 No.  | Rudbeckia fulgida sullivanii 'Goldsturm' | 3L        | Full Pot: C   | 3/m²    |
| 28 No.  | Rudbeckia fulgida sullivanii 'Goldsturm' | 3L        | Full Pot: C   | 4/m²    |
| 56 No.  | Salvia officinalis 'Tricolor'            | 3L        | Full Pot: C   | 4/m²    |
| 100 No. | Stachys byzantina 'Silver Carpet'        | 3L        | Full Pot: C   | 5/m²    |
| 50 No.  | Thymus x citrodorus 'Silver Queen'       | 3L        | Full Pot: C   | 4/m²    |

**TOTALS**

Total: 1230 No.

**CONIFERS**

| Number | Plant Name                  | Height    | Container | Specification                            | Density |
|--------|-----------------------------|-----------|-----------|--|---------|
| 22 No. | x Cupressocyparis leylandii | 250-300cm |           | Single Leader: Furnished to base: 4x: RB | Counted |

**BULBS**

| Number   | Plant Name                | Specification | Density |
|----------|---------------------------|---------------|---------|
| 135 No.  | Allium 'Purple Sensation' | Full Pot: C   | 3/m²    |
| 2152 No. | Narcissus pseudonarcissus | Grade 5/6     | 10/m²   |

**FERNS**

| Number | Plant Name           | Container | Specification | Density |
|--------|----------------------|-----------|---------------|---------|
| 67 No. | Dryopteris filix-mas | 3L        | Full Pot: C   | 2/m²    |

**TOPARY**

| Number | Plant Name     | Height    | Container | Specification  | Density |
|--------|----------------|-----------|-----------|--|---------|
| 7 No.  | Laurus nobilis | 150-175cm | 30-35L    | Ball on Stem: Topiary Half Standard: Ball diameter 50-60cm: C: Clear Stem 90-120cm: Neatly Clipped | Counted |

**GRASSES**

| Number  | Plant Name       | Height  | Container | Specification | Density |
|---------|------------------|---------|-----------|---------------|---------|
| 453 No. | Carex buchananii | 40-60cm | 5L        | Full Pot: C   | 5/m²    |

**NATIVE HEDGEROW MIX**

| Number  | Species            | Mix Species Contribution | Specification                                      | Density |
|---------|--------------------|--------------------------|--|---------|
| 116 No. | Ilex aquifolium    | 10%                      | Leader with Lateral: C                             | 3/m²    |
| 171 No. | Cornus alba        | 15%                      | Branched: 3 brks: C                                | 3/m²    |
| 228 No. | Acer campestre     | 20%                      | 1+1: Transplant - seed raised: C                   | 3/m²    |
| 228 No. | Ligustrum vulgare  | 20%                      | Branched: 4 brks: C                                | 3/m²    |
| 397 No. | Crataegus monogyna | 35%                      | 1+1: Transplant - seed raised: Branched: 4 brks: C | 3/m²    |

**REED MIX**

| Number | Species              | Specification | Density | Mix Species Contribution |
|--------|----------------------|---------------|---------|--------------------------|
| 21 No. | Phragmites australis |               | 2/m²    | 50%                      |
| 21 No. | Typha latifolia      |               | 2/m²    | 50%                      |

Total: 42 No. Total: 100%

**Rev. Date Description**

- A. 03.08.15 Alterations to Plant Schedule
- B. 07.08.15 New layout / planting amendments
- C. 20.08.15 Updated plant schedule
- D. 03.12.15 New layout / planting amendments
- E. 08.12.15 New architectural base

**Title:** Detailed Planting Proposals

**Project:** 11619 A3 01 E

**Client:** Hatched park, Boxer parcel 4-5b

**Client:** Dorchester Living

**Date:** 1 June 15

**Scale:** 1:5000 AD

**Drawing No. Rev.:** 1619 A3 01 E

**Author:** LIZ LAKE ASSOCIATES