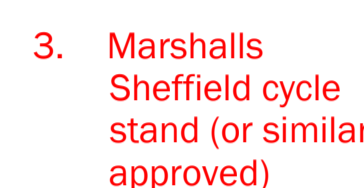
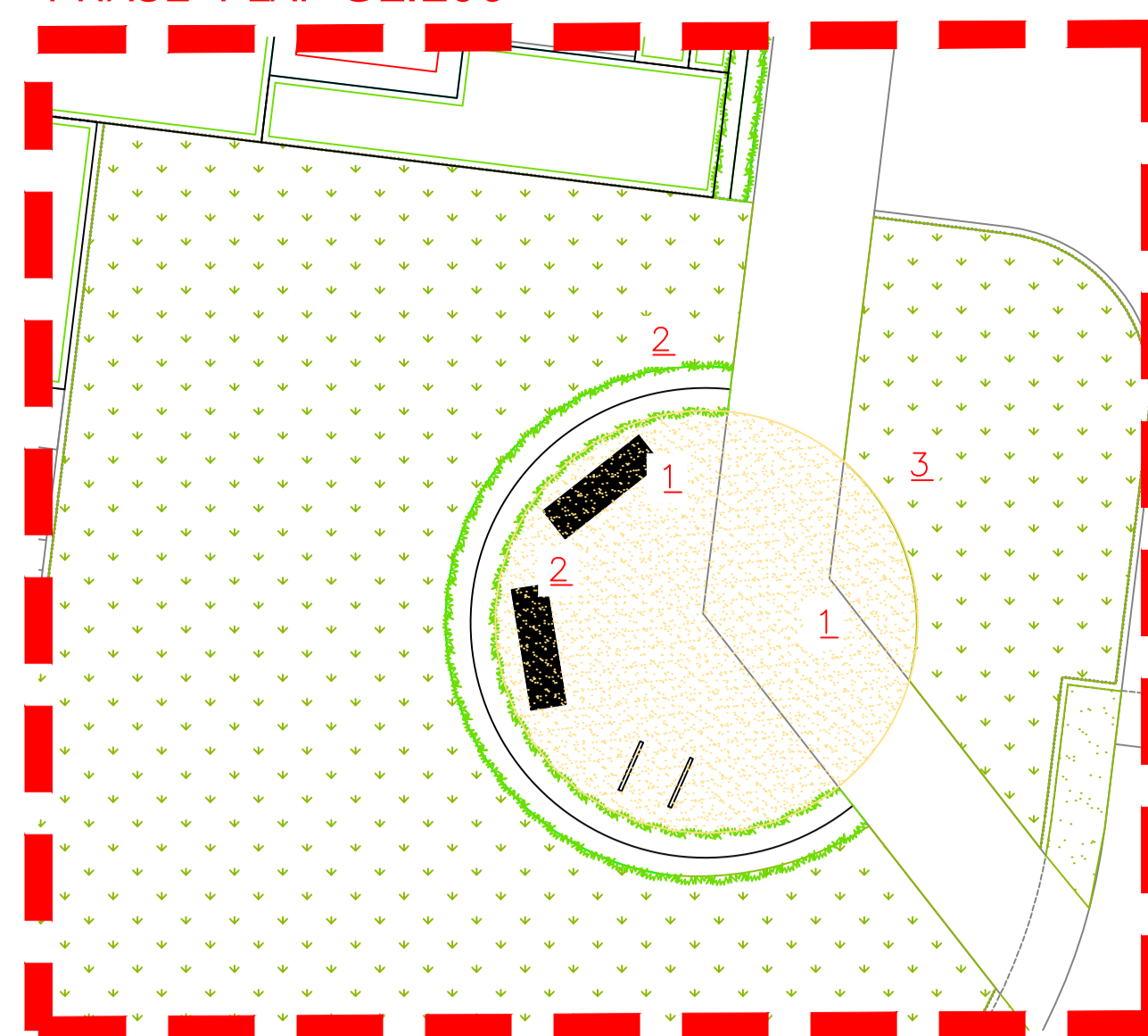


PHASE 4 LAP @1:100



- LEGEND**
- Existing Vegetation
 - Proposed root barrier (Green Blue Urban Refrost 2000 or similar approved)
 - Proposed Trees
 - Proposed Specimens
 - Native Hedgerow
 - Hedging
 - Shrubby/herbaceous planting
 - Bulbous planting
 - Grass/Wildflower
 - Grass/Mown

GENERAL NOTES

This drawing is to be used for planting information only, and is subject to alteration through changes to the site layout or until approved by the area designer.

Any species substitution by the contractor must be verified with the Landscape Architect through the Job Architect.

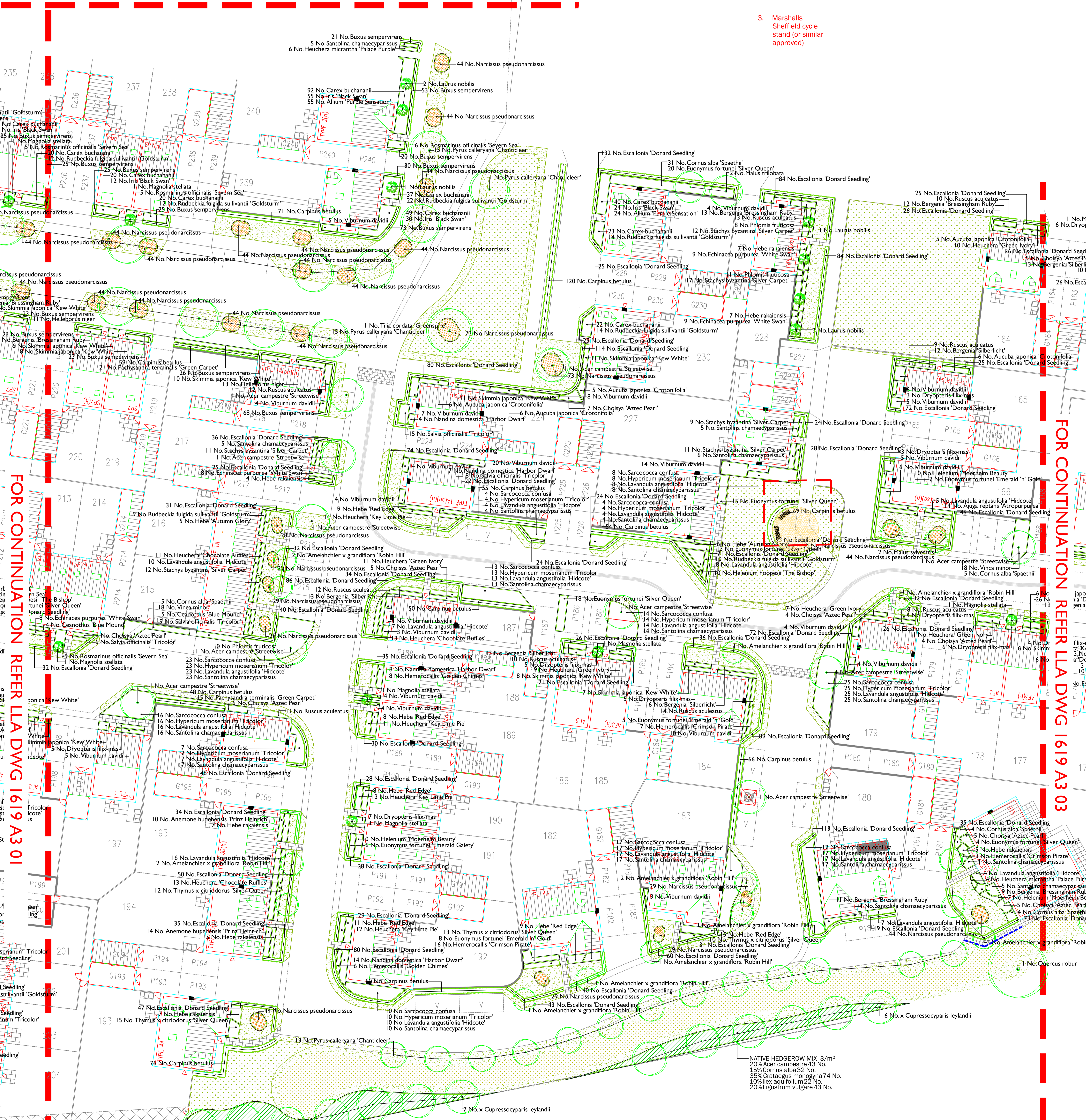
This layout must be checked in accordance with NHBC Standards 2013 (Chapter 4.2 - Building Near Trees & Chapter 9.2 - Drives, Paths and Landscaping) by the Regional Engineer prior to implementation.

Excavations: Contractors must ensure that they have full information relating to service and drainage positions before undertaking any excavations.

Root barriers to be used in association with tree planting adjacent to kerbs / services / footpaths etc. (Greenleaf Refrost products or similar application, in accordance with manufacturer's instructions).

NOTES:
Please note all planting mixes should be planted as follows:
Shrubs/Grasses to be planted in groups of 3-5 with herbaceous to be planted randomly throughout mix area.

FOR CONTINUATION REFER LLA DWG 1619 A3 04



FOR CONTINUATION REFER LLA DWG 1619 A3 01

FOR CONTINUATION REFER LLA DWG 1619 A3 03

NATIVE HEDGEROW MIX 3/m²
20% Acer campestre 73 No.
15% Cornus alba 32 No.
35% Crataegus monogyna 128 No.
10% Ilex aquifolium 37 No.
20% Ligustrum vulgare 73 No.

Rev	Date	Description
A	03.08.15	Plots 225 - 230 planting amendments
B	07.08.15	New layout / planting amendments
C	21.08.15	Removal of low windows 180,182,183,193
D	01.12.15	New layout / planting amendments
E	08.12.15	New layout/amendments to PGS path

Title: Detailed Planting Proposals
 2 of 3
 Project: Bedford park, Boxer period 4-5b
 Client: [Redacted]
 Date: June 2009 AD
 Drawing No: 1619 A3 02 E