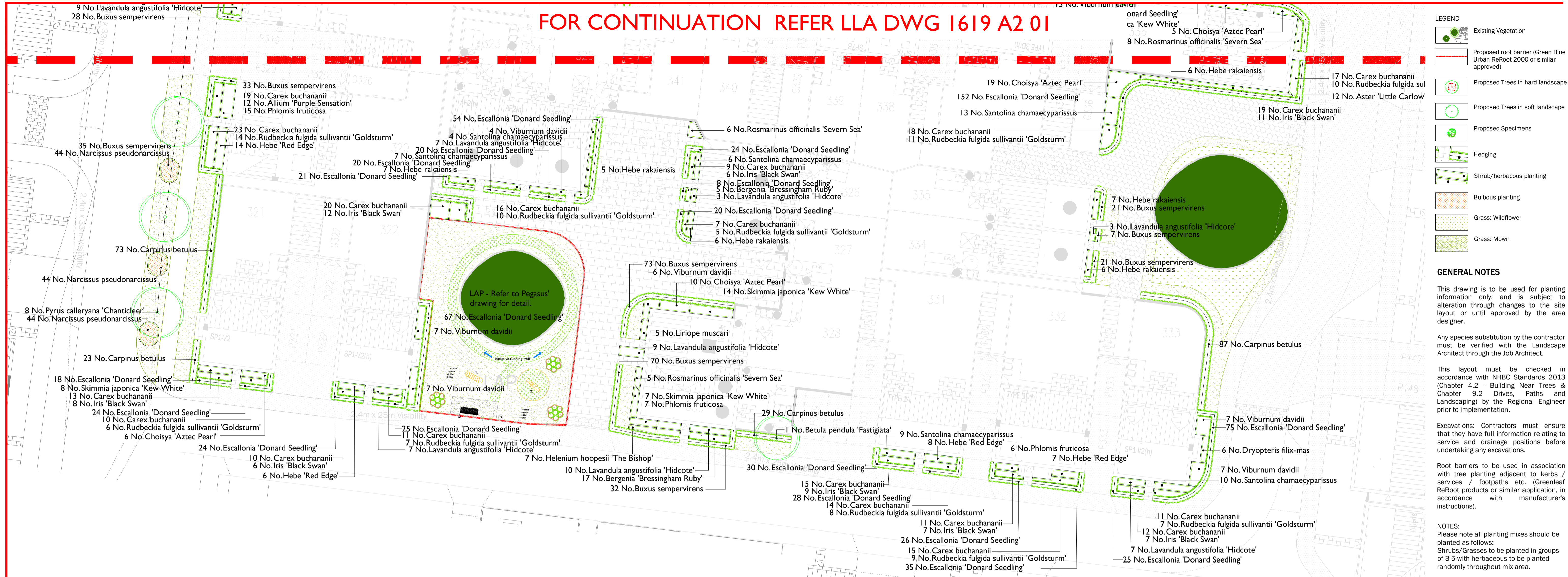


FOR CONTINUATION REFER LLA DWG 1619 A2 01



PLANTING SCHEDULE

TREES

Number	Plant Name	Height	Girth	Specification
1 No.	Betula pendula 'Fastigiata'	400-450cm	16-18cm	Extra Heavy Standard: 3x: RB: Clear Stem min. 200cm
13 No.	Acer campestre 'Streetwise'	500-550cm	20-25cm	Semi-Mature: 3x: RB: Clear Stem min. 200cm
4 No.	Amelanchier x grandiflora 'Robin Hill'	450-650cm	18-20cm	Extra Heavy Standard: 3x: RB: Clear Stem min. 200cm
8 No.	Pyrus calleryana 'Chanticleer'	500-550cm	20-25cm	Semi-Mature: 3x: RB: Clear Stem min. 200cm

Total :26 No.

HEDGING

Number	Plant Name	Height	Container	Specification	Density
1356 No.	Buxus sempervirens	30-40cm	5L	Bushy: 8 brks: C	5/m
212 No.	Carpinus betulus	100-125cm	5L	Branched: 5 brks: C	5/m
1410 No.	Escallonia 'Donard Seedling'	40-60cm	5L	Bushy: 5 brks: C	5/m

Total :2978 No.

HERBACEOUS

Number	Plant Name	Container	Specification	Density
38 No.	Aster 'Little Carlow'	3L	Full Pot: C	4/m ²
54 No.	Bergenia 'Bressingham Ruby'	3L	Full Pot: C	5/m ²
7 No.	Helenium hoopesii 'The Bishop'	3L	Full Pot: C	4/m ²
21 No.	Heleborus niger	3L	Full Pot: C	4/m ²
13 No.	Heuchera 'Chocolate Ruffles'	3L	Full Pot: C	4/m ²
74 No.	Iris 'Black Swan'	3L	Full Pot: C	3/m ²
154 No.	Rudbeckia fulgida sullivanii 'Goldsturm'	3L	Full Pot: C	3/m ²

Total :361 No.

BULBS

Number	Plant Name	Specification	Density
61 No.	Allium 'Purple Sensation'	Full Pot: C	3/m ²
658 No.	Narcissus pseudonarcissus	Grade 5/6	10/m ²

Total :719 No.

SHRUBS

Number	Plant Name	Height	Container	Specification	Density
113 No.	Choisya 'Aztec Pearl'	30-40cm	5L	Bushy: 6 brks: C	3/m ²
8 No.	Cistus x corbariensis	40-60cm	5-7.5L	Bushy: 6 brks: C	3/m ²
60 No.	Hebe 'Red Edge'	5-7.5L	5-7.5L	Bushy: 7 brks: C	3/m ²
91 No.	Hebe rakaiensis	5-7.5L	5-7.5L	Bushy: 7 brks: C	3/m ²
81 No.	Lavandula angustifolia 'Hidcote'	20-30cm	5L	Bushy: 7 brks: C	3/m ²
18 No.	Pachysandra terminalis 'Green Carpet'		5L	Several Shoots: 11 brks: C	3/m ²
40 No.	Phlomis fruticosa	30-40cm	5-7.5L	Branched: 5 brks: C	3/m ²
56 No.	Rosmarinus officinalis 'Savern Sea'	40-60cm	5L	Bushy: 5 brks: C	3/m ²
28 No.	Ruscus aculeatus	30-40cm	3L	Several Shoots: 3 brks: C	3/m ²
136 No.	Santolina chamaecyparissus	30-40cm	5L	Bushy: 8 brks: C	3/m ²
77 No.	Skimmia japonica 'Kew White'	30-40cm	5L	Bushy: 4 brks: C	3/m ²
95 No.	Viburnum davidii	30-40cm	5-7.5L	Bushy: 4 brks: C	2/m ²
5 No.	Vinca minor	5-7.5L	5-7.5L	Several Shoots: 5 brks: C	3/m ²

Total :808 No.

FERNS

Number	Plant Name	Container	Specification	Density
46 No.	Dryopteris affinis 'Cristata Angustata'	3L	Full Pot: C	3/m ²
6 No.	Dryopteris filix-mas	3L	Full Pot: C	3/m ²

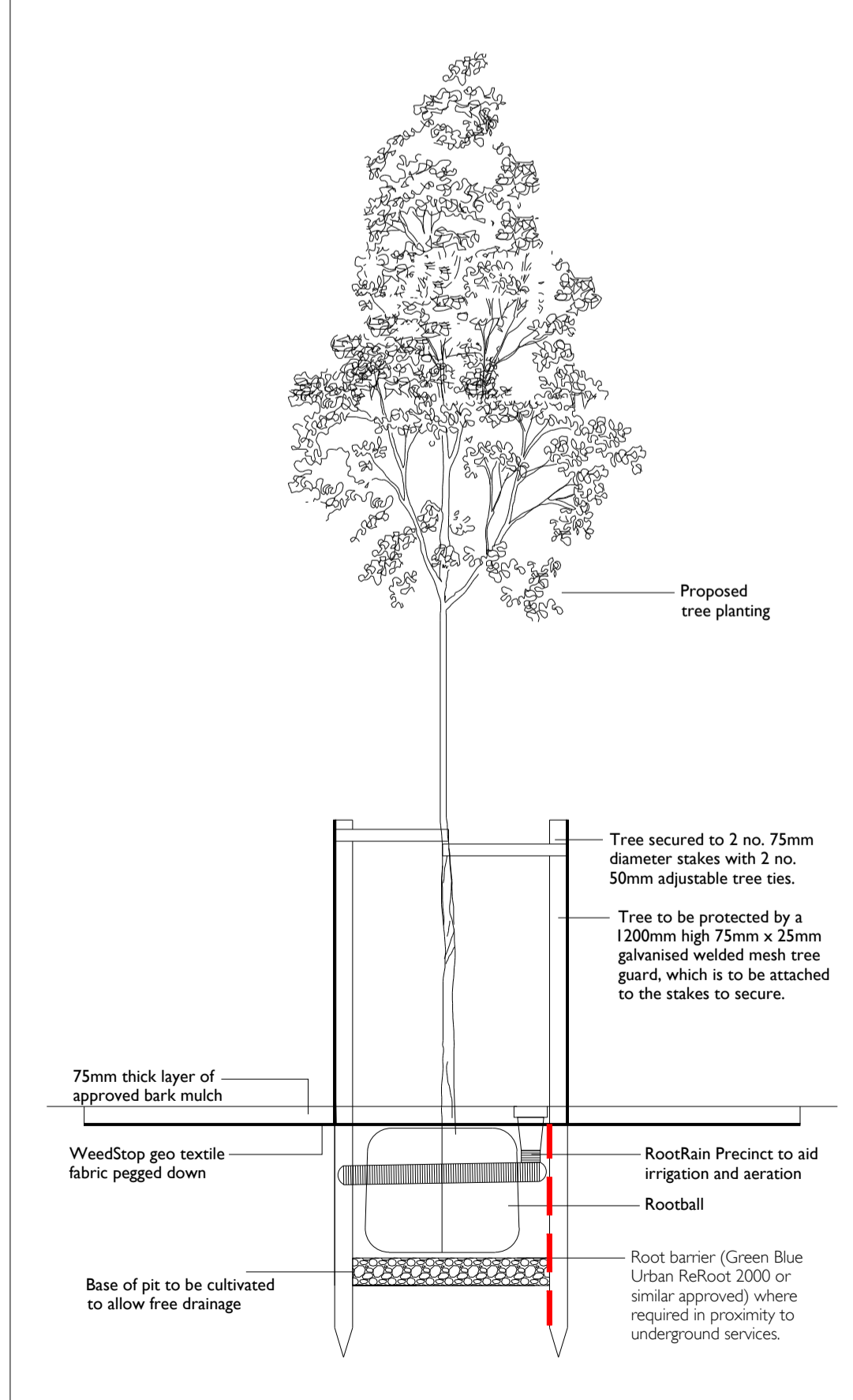
Total :52 No.

GRASSES

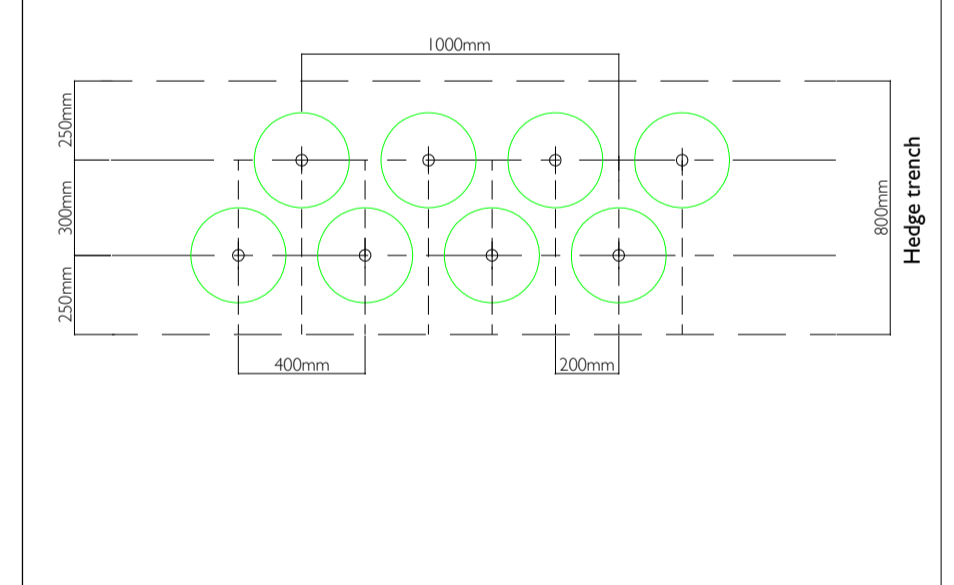
Number	Plant Name	Height	Container	Specification	Density
473 No.	Carex buchananii	40-60cm	5L	Full Pot: C	5/m ²
35 No.	Liriope muscari		3L	Full Pot: C	3/m ²

Total :508 No.

TREE IN SOFT LANDSCAPE: NTS



HEDGE PLANTING DETAIL - 5/m



Rev	Date	Description
A	22.10.15	New Layout / Planting amendments
B	29.10.15	New Layout / Planting amendments
C	08.12.15	New Layout / Planting amendments and tree moved adjacent to plot 325
D	17.03.16	New Layout / Planting amendments
E	04.05.16	New Layout / Planting amendments
F	06.05.16	Planting amendments
G	11.05.16	New layout/Planting amendments

Title: Detailed Planting Proposals
 Project: Heyford park, Booster parcel 6
 Client: Dorchester Living
 Date: August 2015
 Scale: 1:200@ A1
 Drawing No: 1619 A2 02 G
 Rev:

T: +44 (0)1273 647044 E: office@lzlake.com www.lzlake.com
 COPYRIGHT © Liz Lake Associates
 Information contained in this drawing is confidential and may not be used for any purpose other than that for which it was prepared without the prior written authority of Liz Lake Associates.
 This drawing is copyright and may not be copied or reproduced without the prior written authority of Liz Lake Associates.
 BEST PRACTICE: Information contained in this drawing is confidential and may not be used for any purpose other than that for which it was prepared without the prior written authority of Liz Lake Associates.
 LIZ LAKE ASSOCIATES