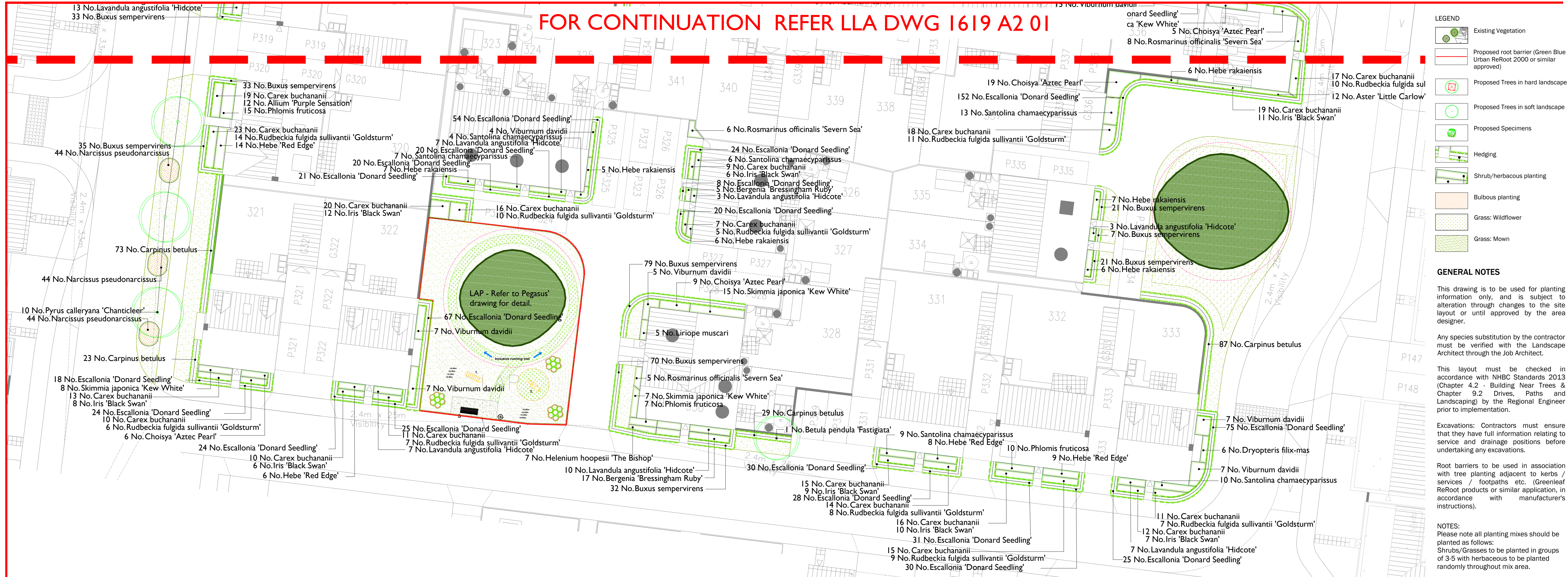


FOR CONTINUATION REFER LLA DWG 1619 A2 01



- LEGEND**
- Existing Vegetation
 - Proposed root barrier (Green Blue Urban ReRoot 2000 or similar approved)
 - Proposed Trees in hard landscape
 - Proposed Trees in soft landscape
 - Proposed Specimens
 - Hedging
 - Shrub/herbaceous planting
 - Bulbous planting
 - Grass: Wildflower
 - Grass: Mown

GENERAL NOTES

This drawing is to be used for planting information only, and is subject to alteration through changes to the site layout or until approved by the area designer.

Any species substitution by the contractor must be verified with the Landscape Architect through the Job Architect.

This layout must be checked in accordance with NHBC Standards 2013 (Chapter 4.2 - Building Near Trees & Chapter 9.2 Drives, Paths and Landscaping) by the Regional Engineer prior to implementation.

Excavations: Contractors must ensure that they have full information relating to service and drainage positions before undertaking any excavations.

Root barriers to be used in association with tree planting adjacent to kerbs / services / footpaths etc. (Greenleaf ReRoot products or similar application, in accordance with manufacturer's instructions).

NOTES:
Please note all planting mixes should be planted as follows:
Shrubs/Grasses to be planted in groups of 3-5 with herbaceous to be planted randomly throughout mix area.

PLANTING SCHEDULE

TREES

Number	Plant Name	Height	Girth	Specification
1 No.	Betula pendula 'Fastigiata'	400-450cm	16-18cm	Extra Heavy Standard: 3x: RB: Clear Stem min. 200cm
5 No.	Acer campestre 'Streetwise'	500-550cm	20-25cm	Semi-Mature: 3x: RB: Clear Stem min. 200cm
3 No.	Amelanchier x grandiflora 'Robin Hill'	450-650cm	18-20cm	Extra Heavy Standard: 3x: RB: Clear Stem min. 200cm
10 No.	Pyrus calleryana 'Chanticleer'	500-550cm	20-25cm	Semi-Mature: 3x: RB: Clear Stem min. 200cm

Total :19 No.

HEDGING

Number	Plant Name	Height	Container	Specification	Density
1431 No.	Buxus sempervirens	30-40cm	5L	Bushy: 8 brks: C	5/m
212 No.	Carpinus betulus	100-125cm	5L	Branched: 5 brks: C	5/m
1358 No.	Escallonia 'Donard Seedling'	40-60cm	5L	Bushy: 5 brks: C	5/m

Total :3001 No.

HERBACEOUS

Number	Plant Name	Container	Specification	Density
38 No.	Aster 'Little Carlow'	3L	Full Pot: C	4/m ²
54 No.	Bergenia 'Bressingham Ruby'	3L	Full Pot: C	5/m ²
7 No.	Helenium hoopesii 'The Bishop'	3L	Full Pot: C	4/m ²
21 No.	Heleborus niger	3L	Full Pot: C	4/m ²
13 No.	Heuchera 'Chocolate Ruffles'	3L	Full Pot: C	4/m ²
77 No.	Iris 'Black Swan'	3L	Full Pot: C	3/m ²
161 No.	Rudbeckia fulgida sullivantii 'Goldsturm'	3L	Full Pot: C	3/m ²

Total :371 No.

BULBS

Number	Plant Name	Specification	Density
60 No.	Allium 'Purple Sensation'	Full Pot: C	3/m ²
616 No.	Narcissus pseudonarcissus	Grade 5/6	10/m ²

Total :676 No.

SHRUBS

Number	Plant Name	Height	Container	Specification	Density
121 No.	Choisya 'Aztec Pearl'	30-40cm	5L	Bushy: 6 brks: C	3/m ²
8 No.	Cistus x corbariensis	40-60cm	5-7.5L	Bushy: 6 brks: C	3/m ²
61 No.	Hebe 'Red Edge'	5-7.5L	5-7.5L	Bushy: 7 brks: C	3/m ²
87 No.	Hebe rakaiensis	5-7.5L	5-7.5L	Bushy: 7 brks: C	3/m ²
76 No.	Lavandula angustifolia 'Hidcote'	20-30cm	5L	Bushy: 7 brks: C	3/m ²
18 No.	Pachysandra terminalis 'Green Carpet'	5L	Several Shoots: 11 brks: C	3/m ²	
44 No.	Phlomis fruticosa	30-40cm	5-7.5L	Branched: 5 brks: C	3/m ²
54 No.	Rosmarinus officinalis 'Savern Sea'	40-60cm	5L	Bushy: 5 brks: C	3/m ²
32 No.	Ruscus aculeatus	30-40cm	3L	Several Shoots: 3 brks: C	3/m ²
129 No.	Santolina chamaecyparissus	30-40cm	5L	Bushy: 8 brks: C	3/m ²
87 No.	Skimmia japonica 'Kew White'	30-40cm	5L	Bushy: 4 brks: C	3/m ²
103 No.	Viburnum davidii	30-40cm	5-7.5L	Bushy: 4 brks: C	2/m ²
5 No.	Vinca minor	5-7.5L	Several Shoots: 5 brks: C	3/m ²	

Total :825 No.

FERNS

Number	Plant Name	Container	Specification	Density
46 No.	Dryopteris affinis 'Cristata Angustata'	3L	Full Pot: C	3/m ²
6 No.	Dryopteris filix-mas	3L	Full Pot: C	3/m ²

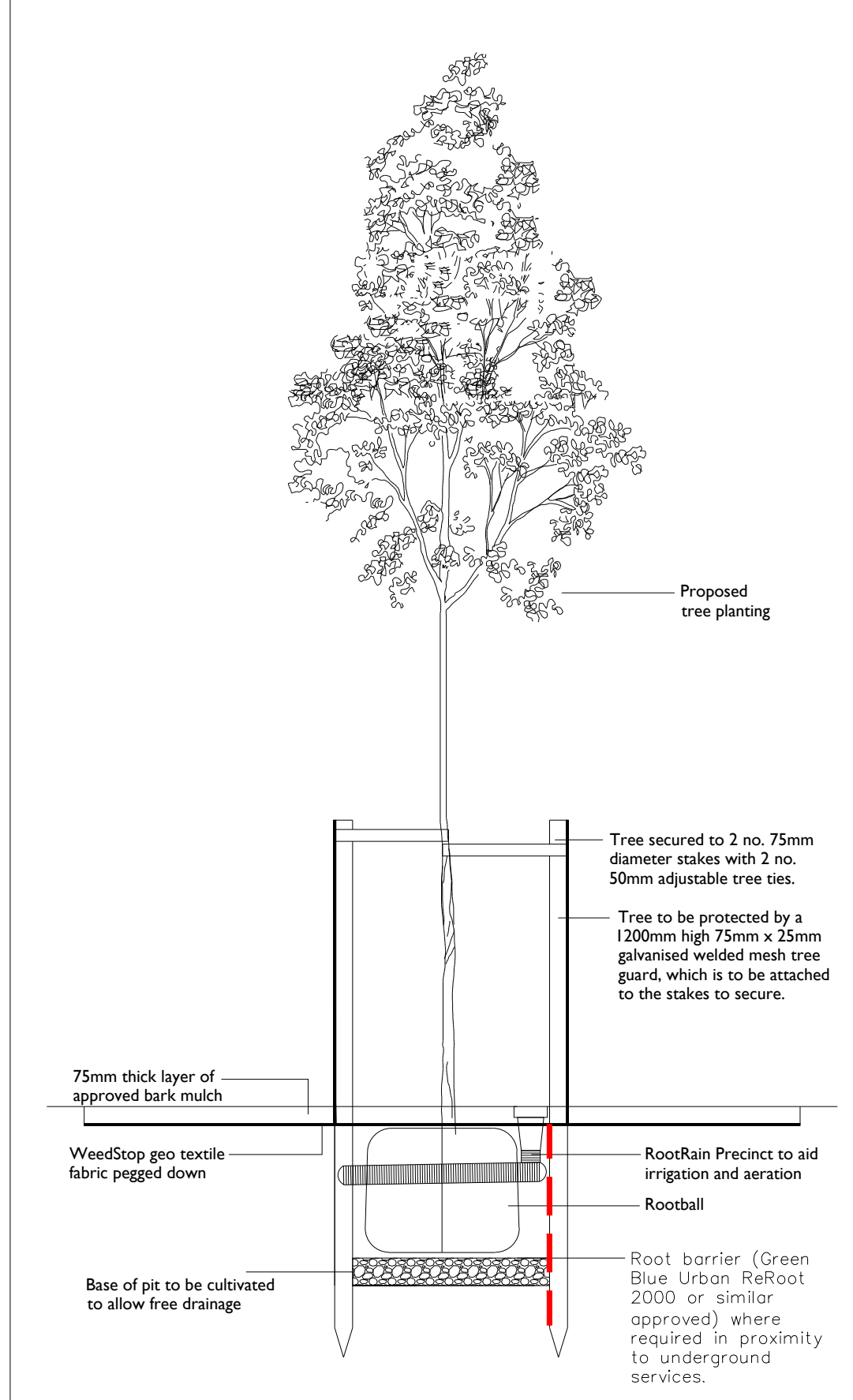
Total :52 No.

GRASSES

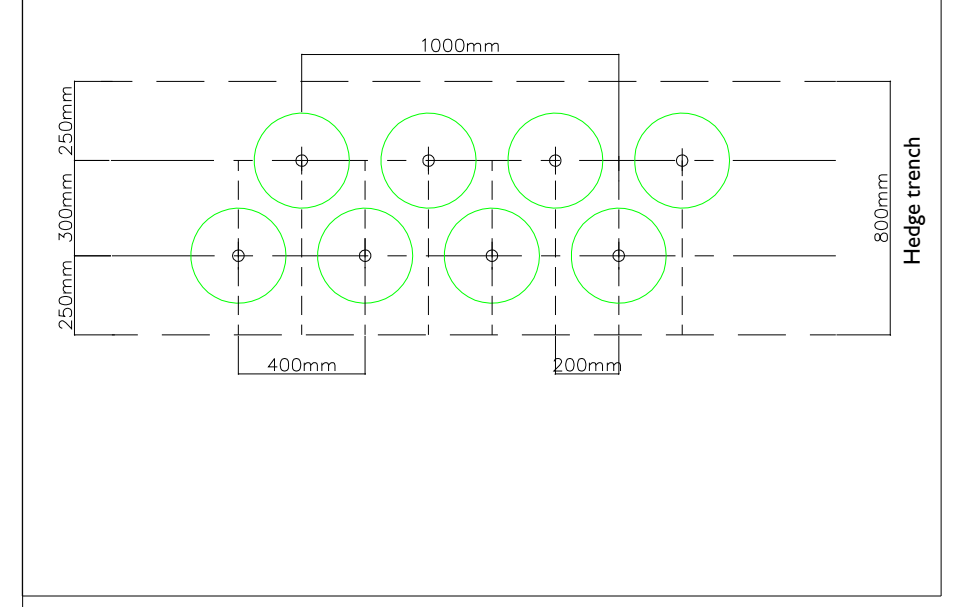
Number	Plant Name	Height	Container	Specification	Density
486 No.	Carex buchananii	40-60cm	5L	Full Pot: C	5/m ²
35 No.	Liriope muscari	3L	Full Pot: C	3/m ²	

Total :521 No.

TREE IN SOFT LANDSCAPE: NTS



HEDGE PLANTING DETAIL - 5/m



Rev	Date	Description
A	22.10.15	New Layout / Planting amendments
B	29.10.15	New Layout / Planting amendments
C	08.12.15	New Layout / Planting amendments and tree moved adjacent to plot 325
D	17.03.16	New Layout / Planting amendments

Title: Detailed Planting Proposals 2 of 2
 Project: Heyford park, Booster parcel 6
 Client: Dorchester Living
 Date: August 2015
 Scale: 1:200@ A1
 Drawing No: 1619 A2 02 D
 Rev:

T: +44 (0)1273 647044 E: office@lizlake.com www.lizlake.com

©2015 Liz Lake Associates. Information contained in this drawing is confidential and may not be used for any purpose other than that for which the drawing is supplied without the prior written authority of Liz Lake Associates. This drawing is copyright and may not be copied except within the agreed conditions of supply.

LIZ LAKE ASSOCIATES
LANDSCAPE ARCHITECTS