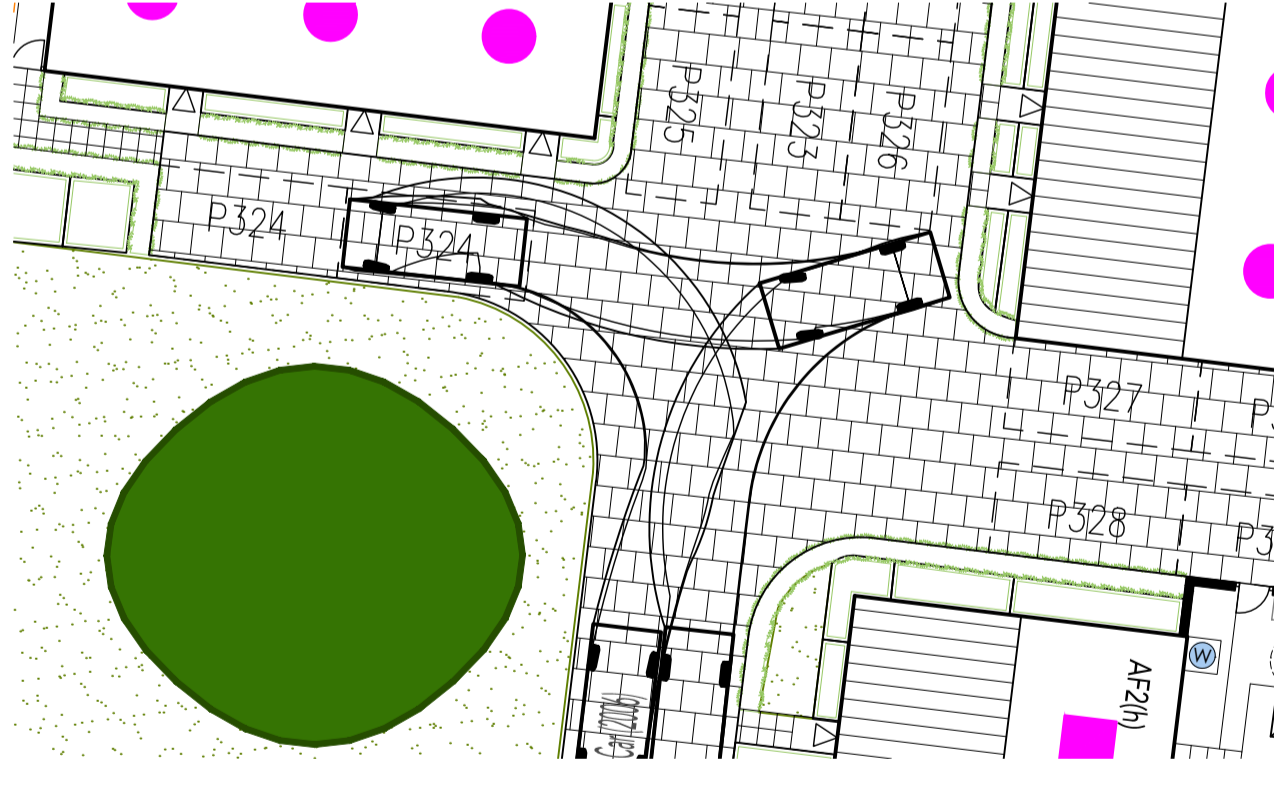
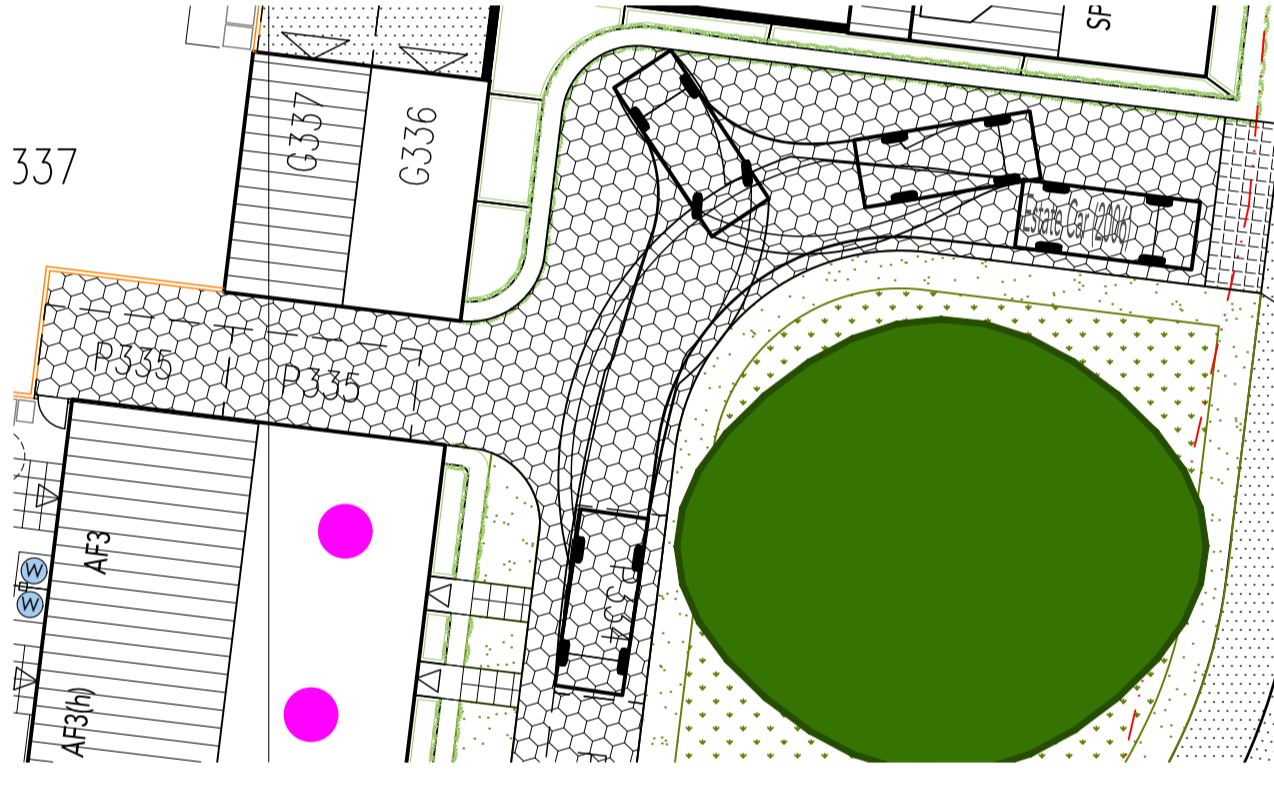
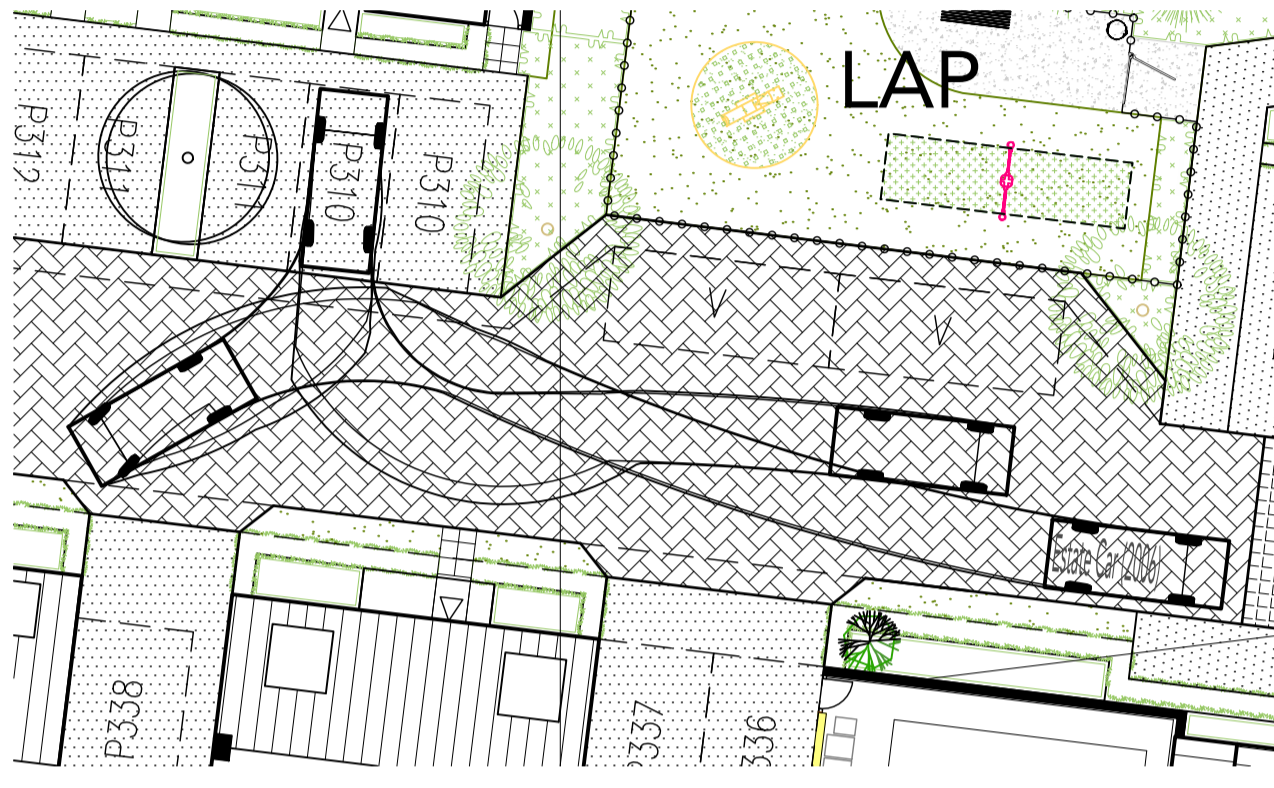
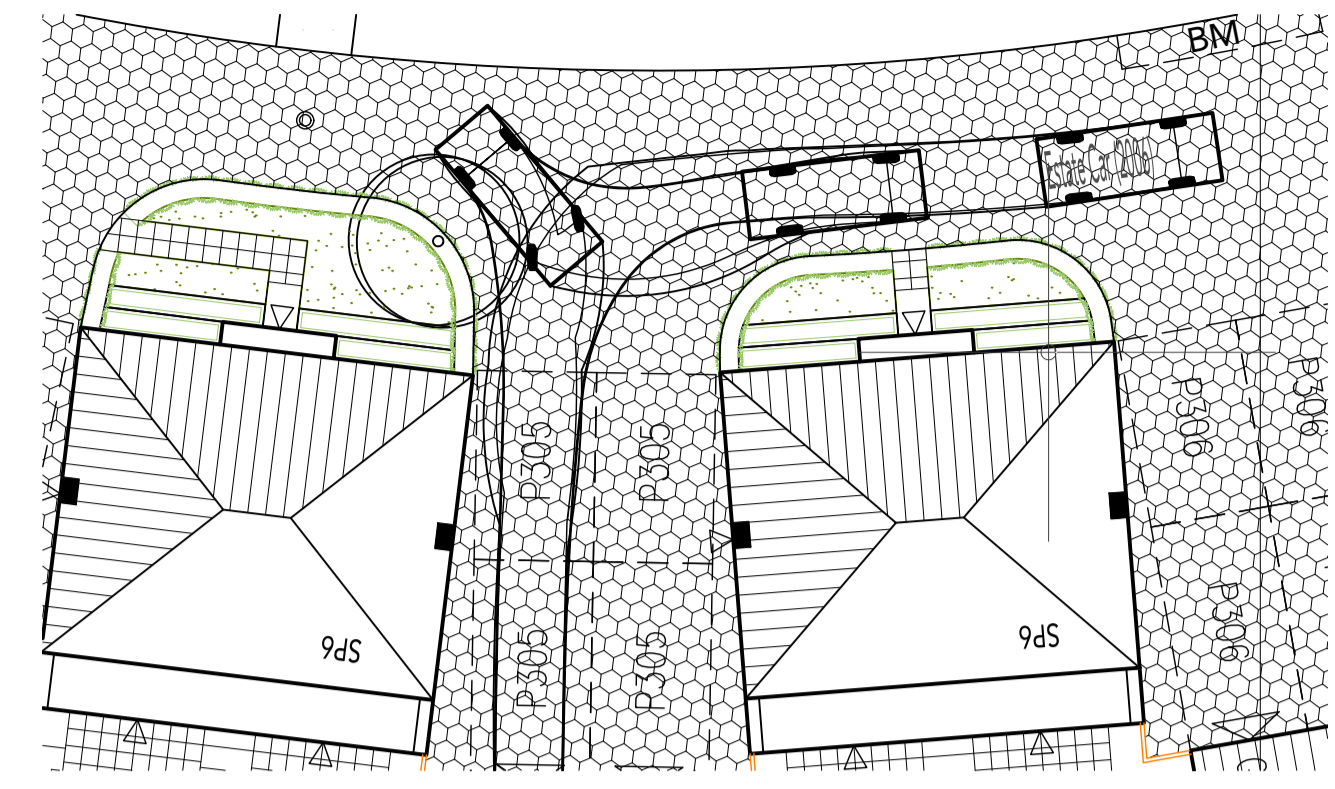
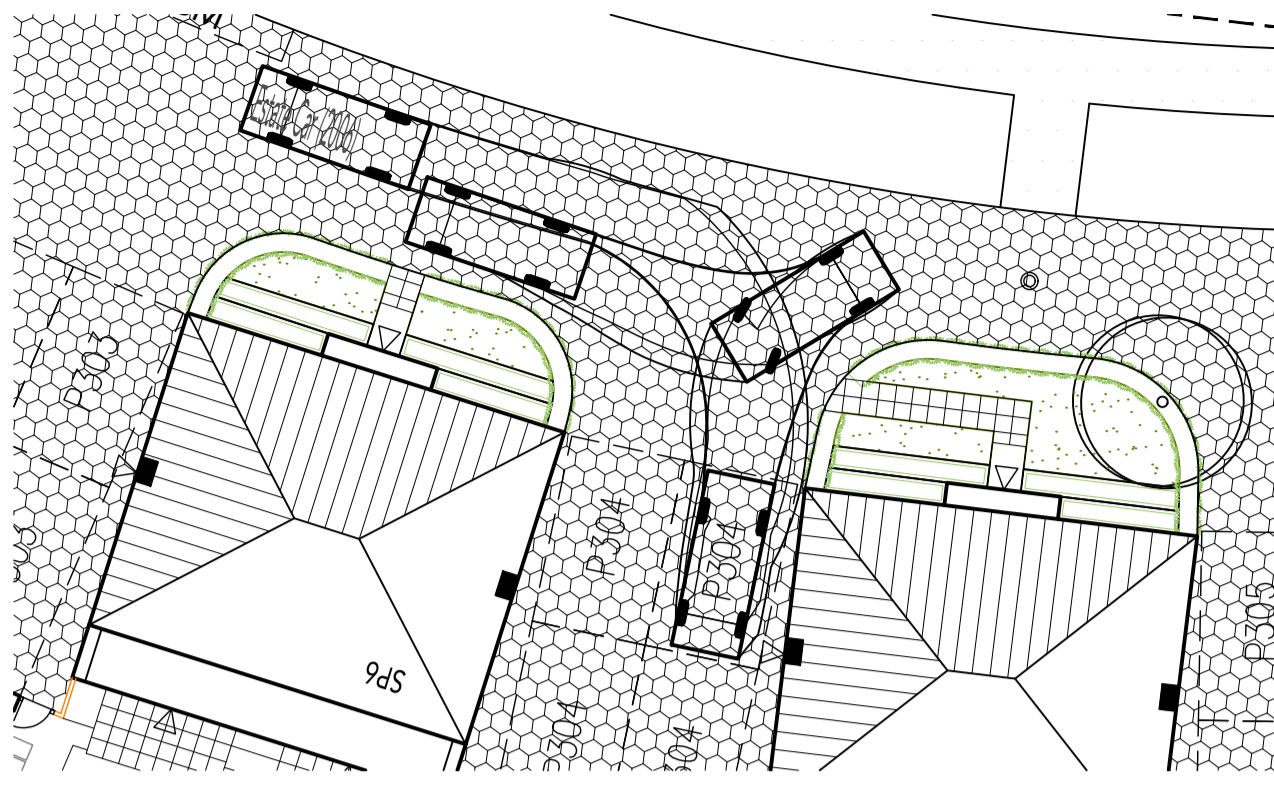


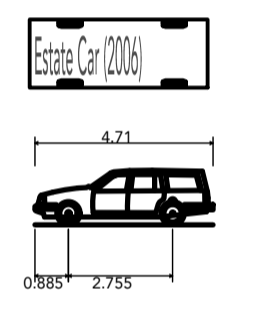


DORCHESTER GROUP

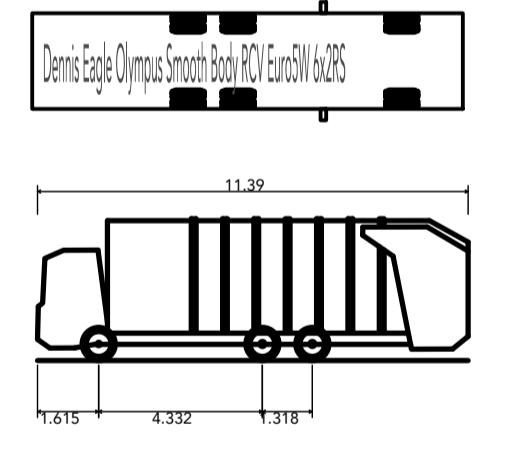
- REVISIONS:
- A. 2015-12-09. Visibility splays added to junctions, landscaping updated. MED
  - B. 2015-12-22. Visibility splays added to legend. SO
  - C. 2016-01-12. Patio length updated for Type 1A, Type 1A-SA, Type 2, SP1, Type 3D, Type 4A & SP6 house types as per client request. SO
  - D. 2016-02-26. Buildouts repositioned and on-street parking spaces amended along the road North East of the site. Vehicle tracking unaffected. PVA
  - E. 2016-03-22. Amended to suit revised Planning Layout. DJE
  - F. 2016-04-19. Amended to suit revised Planning Layout. DJE
  - G. 2016-05-10. Hard-standing around the sub-station and Type 3D footprint amended, tracking unaffected. MED
  - H. 2016-07-15. LAP repositioned at Local Authority request. MED



LEGEND



Estate Car (2006)	4.710m
Overall Length	1.804m
Overall Width	1.442m
Overall Body Height	0.207m
Min Body Ground Clearance	1.756m
Max Track Width	4.00s
Lock-to-lock time	5.950m
Curb to Curb Turning Radius	



Dennis Eagle Olympus Smooth Body RCV Euro5W 6x2RS	11.390m
Overall Length	2.530m
Overall Width	3.751m
Overall Body Height	0.304m
Min Body Ground Clearance	2.500m
Track Width	4.00s
Lock-to-lock time	7.500m
Curb to Curb Turning Radius	



REFUSE VEHICLE TRACKING LAYOUT @ 1:500

VEHICLE TRACKING LAYOUT

SCALE: 1:200 @ A1

DATE: AUGUST 2015

DRAWING TITLE: VEHICLE TRACKING LAYOUT

DRAWN: DJE

DRAWING NO.: 0521-PH6-105

THE OLD BREWERY, LODWAY, PILL, BRISTOL BS20 0DH  
t:01275 813380 f:01275 813381 e:admin@focusdp.com

