

Legend

- July 2007 (Environment Agency)**
- 1 - 5 Number of properties flooded internally by 'surface water' (by settlement). Note: Points are an indication of the approximate location of the settlement affected
 - 6 - 10
 - 11 - 15
 - 16 - 20
 - 21 - 24
- July 2007 (Fire and Rescue Service)**
- 1-5 Number of properties flooded internally by 'drainage' and 'ordinary watercourse' (by parish)
 - 6-10
 - 11-20
 - 21-50
 - 51-125

© Crown Copyright and database rights 2011 1000232349
Contains Environment Agency information © Environment Agency and database right



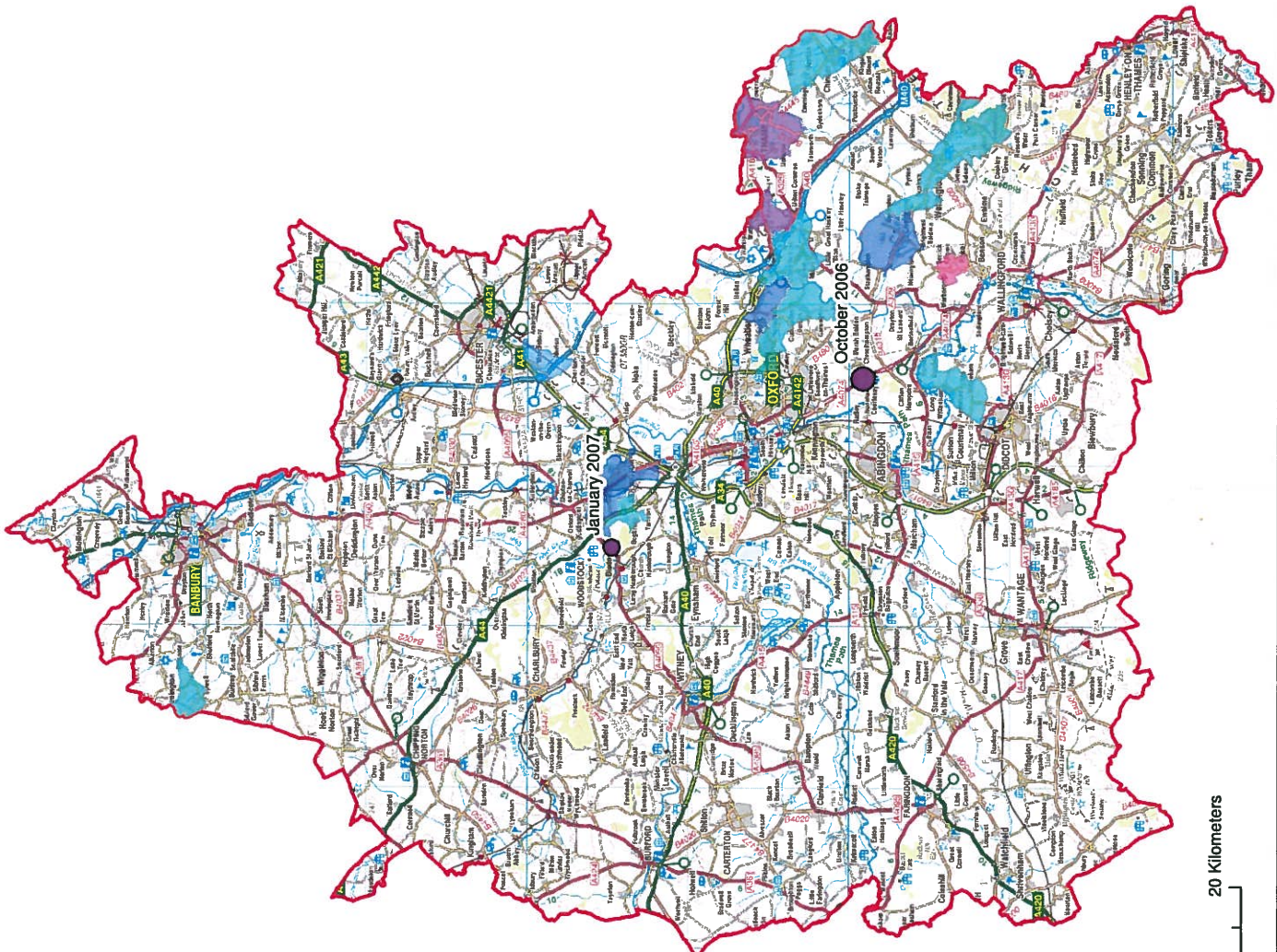
Crowmarsh Skills Centre
100 Praeger Crowmarsh
Wallingford
OX10 6SL
www.jbaconsulting.co.uk
+44 (0)1491 826688
+44 (0)1491 051937
info@jbaconsulting.co.uk

Other offices at Abingdon, Banbury, Bicester, Ewelme, Henley-on-Thames, High Wycombe, Oxford, Reading, Wallingford, Witney, Woodstock

OXFORDSHIRE COUNTY COUNCIL
PRELIMINARY FLOOD RISK ASSESSMENT
Map 1: Past flooding - Surface water in July 2007

This document is the property of Jeremy Barr Associates Ltd. It shall not be reproduced in whole or in part, nor disclosed to a third party, without the permission of Jeremy Barr Associates

Drawn by: AB	Scale:
Date: 09/05/2011	Not to scale
Status: FINAL	
File Name: N/A	
Drawing Number: Map 1	



Legend

June 2008

Number of properties flooded by parish

- Less than 2
- 2 to 5
- 5 to 10
- 10 to 15
- 15 to 20

Number of properties flooded by other events

- 20
- 25

Note: Points are an indication of the approximate location of the settlement affected, NOT the location of individual properties flooded.

© Crown Copyright and database rights 2011 100023343



Crownmarsh Batts Barns
100 Preston Crowmarsh
Wallingford
OX10 8SL
www.jbaconsulting.co.uk



T: +44 (0)1491 836888
F: +44 (0)1491 0518307
info@jbaconsulting.co.uk

Chris: Director of Assessment, Development, Education, Adoptions, Health, Estates, Neighbourhood
User Type: Neighbourhood, Strategic, Planning & Laboratory

for

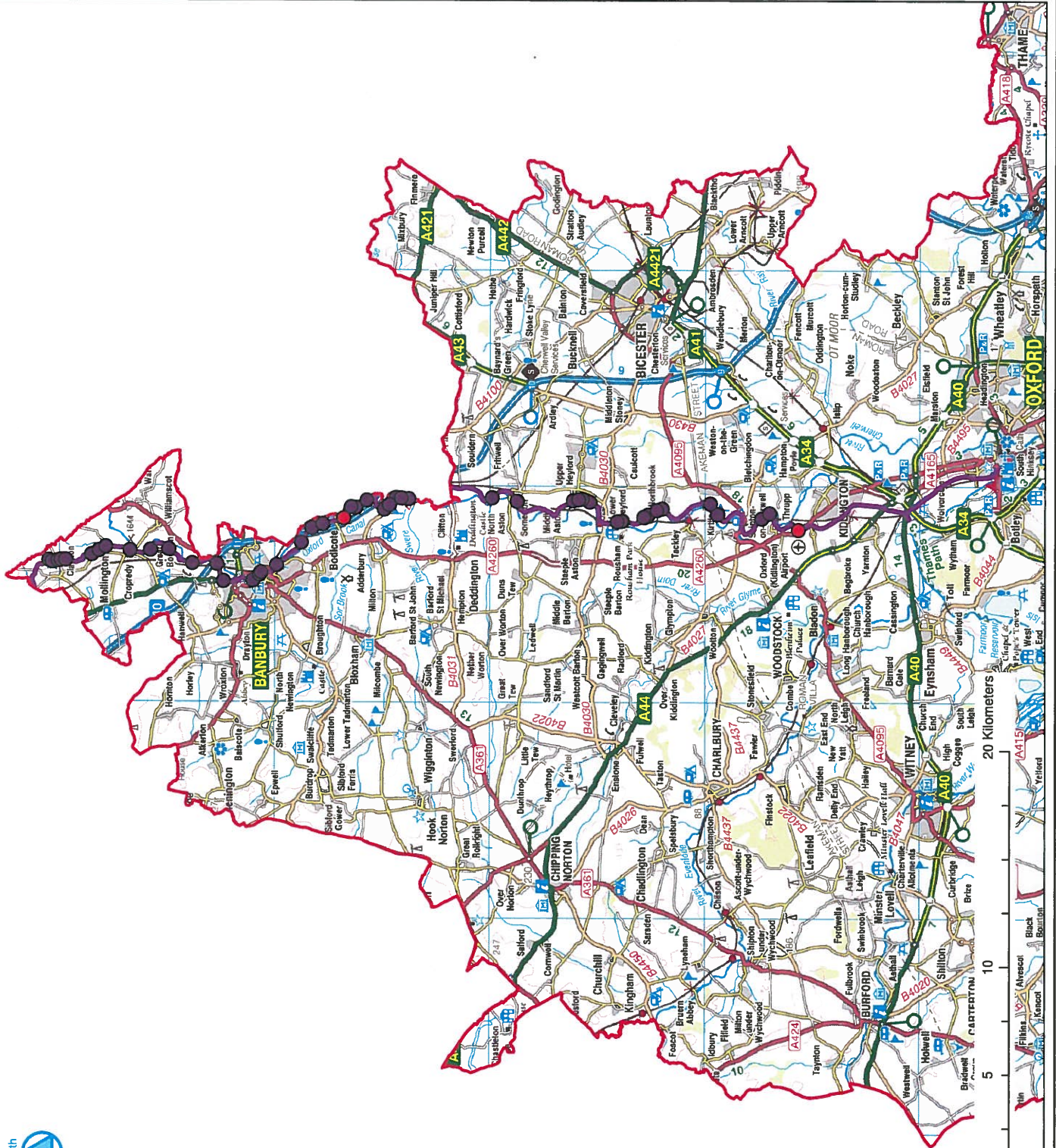
OXFORDSHIRE COUNTY COUNCIL

PRELIMINARY FLOOD RISK ASSESSMENT

Map 2: Past flooding - Surface water in other events

This document is the property of Jeremy Barn Associates Ltd. It shall not be reproduced in whole or in part, nor disclosed to a third party, without the permission of Jeremy Barn Associates

Drawn by: AB	Scale:
Date: 06/06/2011	Not to Scale
Status: FINAL	
File Name: N/A	
Drawing Number: Map 2	



- Legend**
- Breach location
 - Overtopping location
 - Oxford Canal

© Crown Copyright and database rights 2011 10002343
© British Waterways



Crownshurst Budge Barna
100 Fison, Crowmarsh
Wallingford
OX10 6SL
www.jbaconsulting.co.uk
t +44 (0)1491 836888
f +44 (0)1491 851807
e info@jbaconsulting.co.uk

Other Offices: www.jbaconsulting.co.uk www.jbaconsulting.co.uk www.jbaconsulting.co.uk
Oxfordshire, Warwickshire, Gloucestershire, Wiltshire, West Midlands, East Midlands, East of England, South East, South West, North East, Yorkshire & the Humber, London, North West, South West, Wales, Scotland, Northern Ireland

for
OXFORDSHIRE COUNTY COUNCIL
PRELIMINARY FLOOD RISK ASSESSMENT
Map 4: Past flooding - Canal flooding in
July 2007

This document is the property of Jeremy Bunn Associates Ltd. It shall not be reproduced in whole or in part, nor disclosed to a third party, without the permission of Jeremy Bunn Associates

Scale:

Drawn by: AB

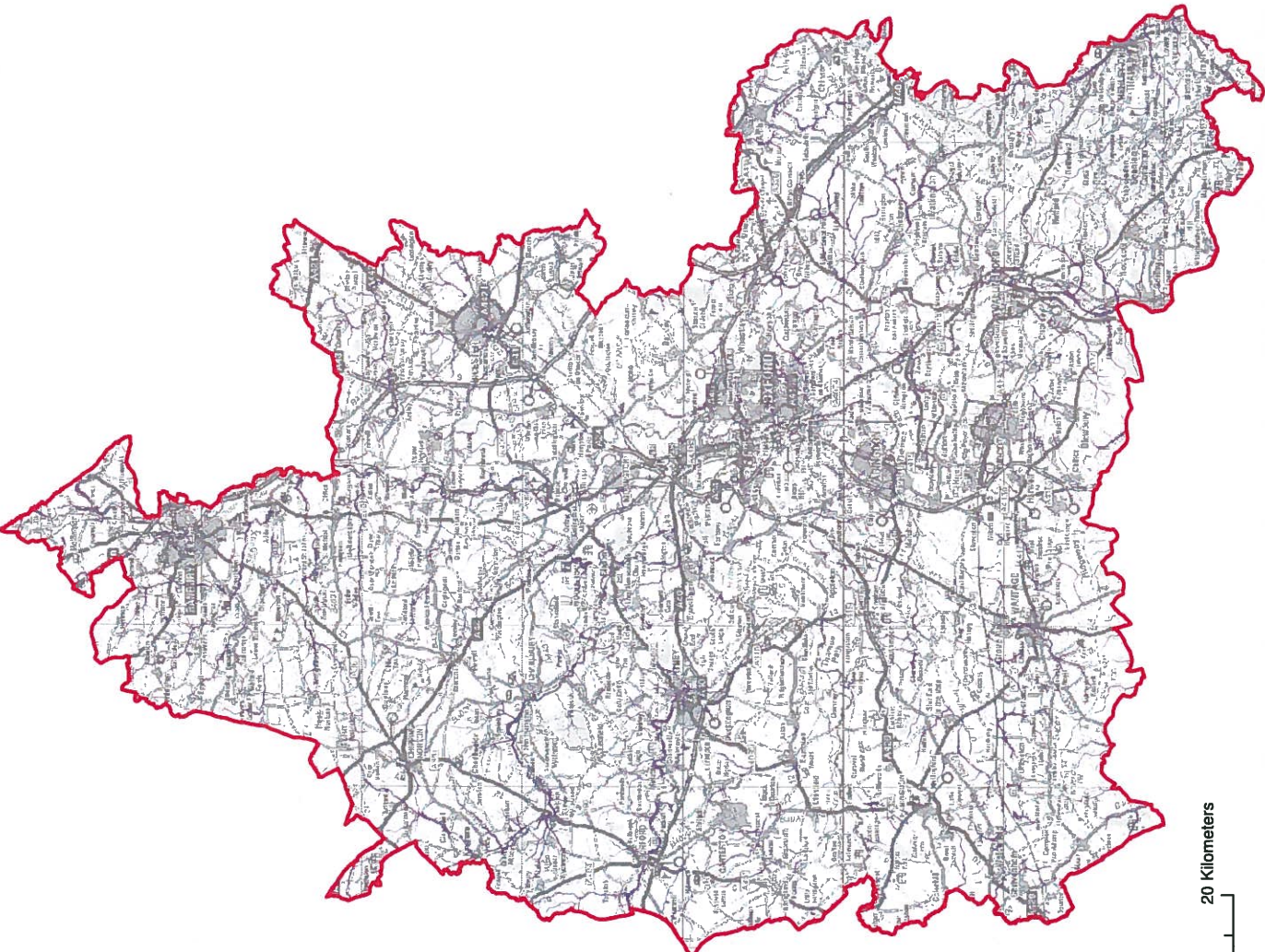
Date: 09/06/2011

Status: FINAL

File Name: NA

Drawing Number: Map 4

Not to scale



Legend

■ 1 in 200 rainfall event (> 0.3m)

This map gives an indication of the broad areas likely to be at risk of surface water flooding. It is not suitable for use at an individual property scale due to the method used.

© Crown Copyright and database rights 2011 100023343
© Environment Agency



Crowmarsh Baille Barns
100 Preston Crowmarsh
Wallingford
OX10 6SL
www.jbaconsulting.co.uk
+44 (0)1491 836888
+44 (0)1491 0519307
info@jbaconsulting.co.uk

Other offices: 41 Arden Road, Doncaster, L10 4JH; 145-147, High Street, Exeter, EX1 1AS; 100 The Square, Northampton, NN1 2JF; 100 The Square, Northampton, NN1 2JF; 100 The Square, Northampton, NN1 2JF

for

**OXFORDSHIRE COUNTY COUNCIL
PRELIMINARY FLOOD RISK ASSESSMENT**

Map 5: Locally agreed surface water information (Flood Map for Surface Water)

This document is the property of Jeremy Benn Associates Ltd. It shall not be reproduced in whole or in part, nor disseminated to a third party, without the permission of Jeremy Benn Associates

Drawn by: AS	Scale:
Date: 06/06/2011	Not to scale
Status: FINAL	
File Name: N/A	
Drawing Number: Map 5	

Explanatory note:
 Maps 6a to 6c show the spatial distribution of three receptors (people, critical services and non-residential properties) that may be affected by future surface water flooding in an event with a 1 in 200 chance of occurring in any given year.

This map shows the number of people affected, which can be considered an indicator of the consequences of flooding for human health. The number of people is defined by the Environment Agency guidance as the number of residential (housing) properties multiplied by 2.34.

Calculations for each 1km square were carried out using the Flood Map for Surface Water (1 in 200 >0.3m), Environment Agency's detailed method of counting (based on property outlines) and the National Receptors Database v1.1.

The 1km squares are shaded from light to dark purple as the number of people affected in each square increases. Also overlaid on the map are surface water flooding 'hot spots' or areas where the consequences of a surface water event are likely to be more severe. These have been defined as 1km grid squares where at least one of the three indicators is above the threshold given below (thresholds defined by Deira guidance):

- More than 200 people affected
- One or more critical services affected

The maps show that:

- The main hotspots are in more urban locations due to the concentration of population, industrial and commercial buildings, and critical services.
- Several more rural communities have less people affected but will still experience an adverse impact, particularly those where local critical services are affected. More detail is given in the main report.

Legend

- Hotspots
- Number of people
- Number of people affected per 1km grid square
- < 20
- 20 - 50
- 50 - 100
- 100 - 200
- > 200

© Crown Copyright and database rights 2011 100023343
 © Environment Agency

Crowmarsh Battle Barns
 100 Preston Crowmarsh
 Wallingford
 OX10 6SL
 www.jbaconsulting.co.uk
 t +44 (0)1491 836688
 f +44 (0)1491 0519307
 e info@jbaconsulting.co.uk

Other offices: Almondsbury, Bradford, Chesham, Leamington, London, Luton, Milton Keynes, Northampton, Oxford, Reading, Slough, Wokingham

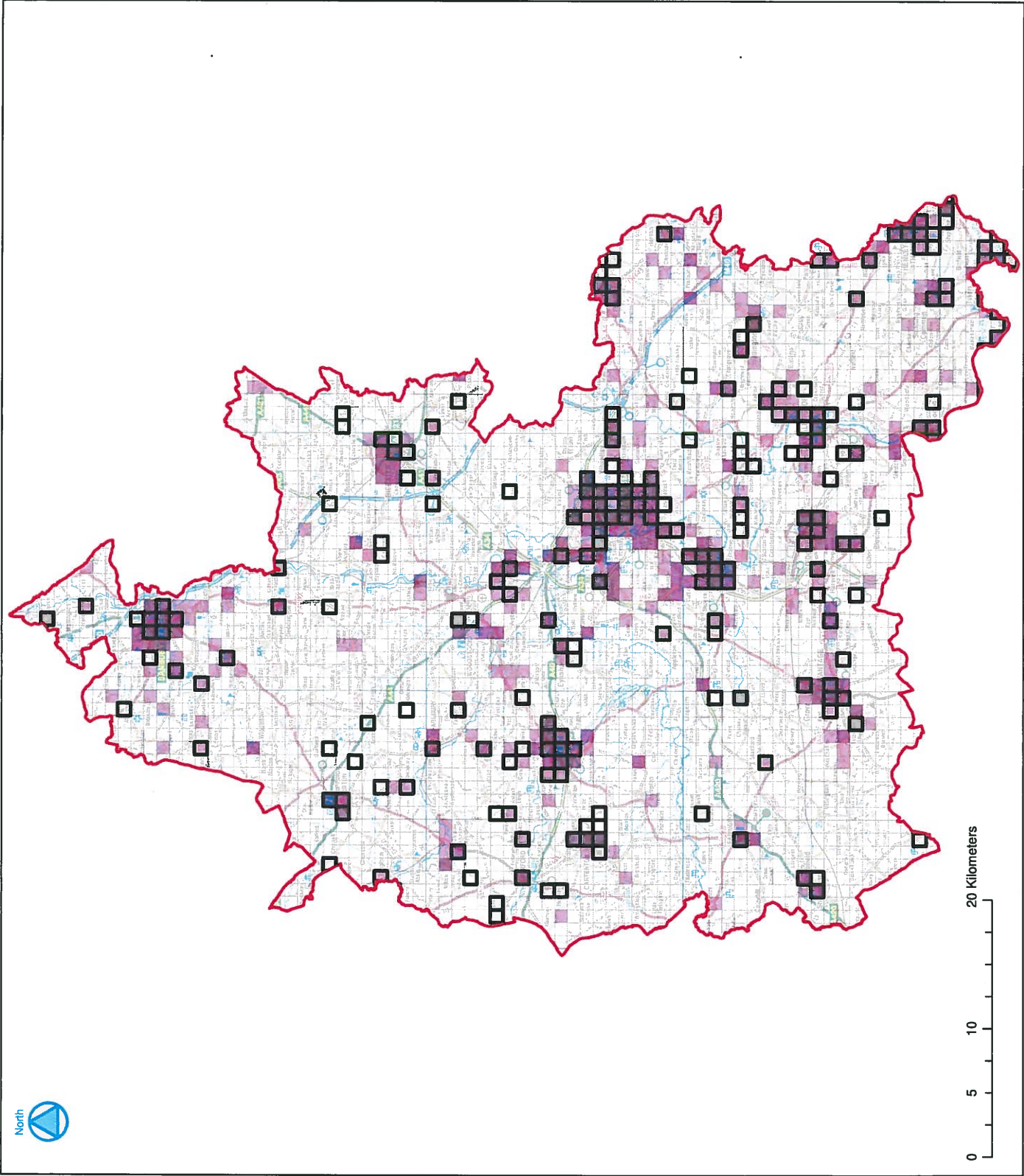
OXFORDSHIRE COUNTY COUNCIL
PRELIMINARY FLOOD RISK ASSESSMENT
 Map 6a: People affected by flooding in a rainfall event with a 1 in 200 chance of occurring in any given year

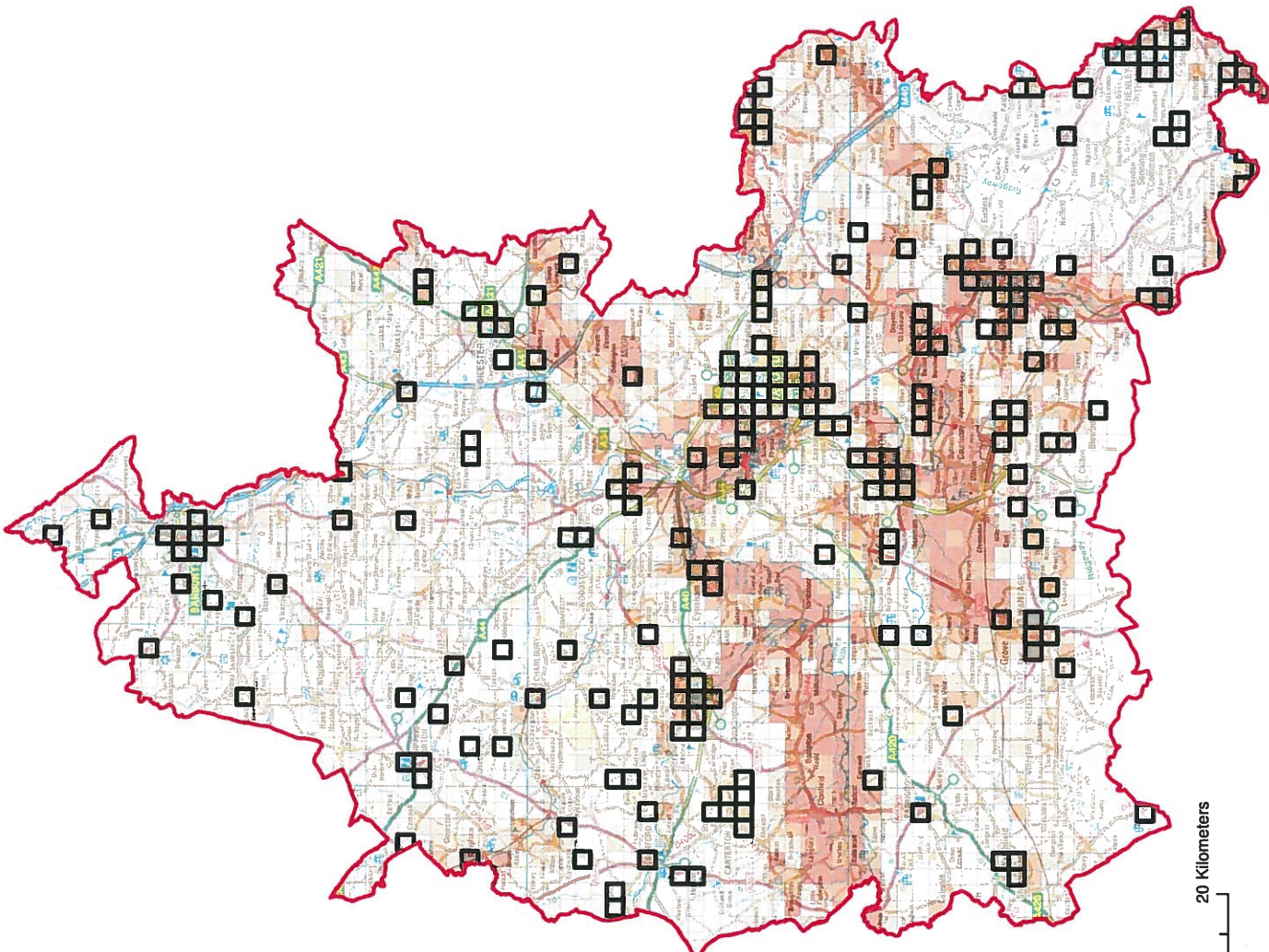
for

Scale: Not to scale

Drawn by: AC
 Date: 09/06/2011
 Status: FINAL
 File Name: N/A
 Drawing Number: Map 6a

This document is the property of Jeremy Barn Associates Ltd. It shall not be reproduced in whole or in part, nor disclosed to a third party, without the permission of Jeremy Barn Associates Ltd.





Legend

- Surface water hotspots
 - Areas Susceptible to Groundwater Flooding
 - $\geq 75\%$
 - $\geq 50\% < 75\%$
 - $\geq 25\% < 50\%$
 - $< 25\%$
- Proportion of each 1km square that is susceptible to groundwater emergence

© Crown Copyright and database rights 2011 10002543
 © Environment Agency



Crowmarsh Batis Barnes
 100 Preston Crowmarsh
 Wallingford
 OX10 6SL
www.jbaconsulting.co.uk
 t +44 (0)1491 836688
 f +44 (0)1491 0518307
 e info@jbaconsulting.co.uk

for
OXFORDSHIRE COUNTY COUNCIL
PRELIMINARY FLOOD RISK ASSESSMENT
Map 7: Areas Susceptible to Groundwater Flooding

This document is the property of Jeremy Bunn Associates Ltd. It shall not be reproduced in whole or in part, nor disclosed to a third party, without the permission of Jeremy Bunn Associates Ltd.



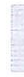




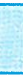
Drawn by: AB
 Date: 09/08/2011
 Status: FINAL
 File Name: N/A
 Drawing Number: Map 7

Scale:
 Not to scale

Cherwell and West Oxfordshire SFRA

FIGURE A-1

Overview of Potential Constraints to Development

-  District Boundaries
-  Urban Areas
-  Sites Submitted to Councils
-  SFRA Hybrid Flood Zone 3b
-  SFRA Flood Zone 3a
-  SFRA Flood Zone 3 including Climate Change
-  SFRA Flood Zone 2
-  Protected Sites - Ramsar sites, SSSIs, SCA, AONB, Greenbelt, Wildlife sites.

SCALE AS SHOWN

Some features of this map are based on information provided by the Environment Agency. Copyright © Environment Agency, 2007

This map is based upon Ordnance Survey material with the permission of Ordnance Survey on behalf of the Controller of Her Majesty's Stationery Office © Crown copyright. Unauthorised reproduction infringes Crown copyright and may lead to prosecution or civil proceedings. License No. LA 10002/4316 © WODDC Crown copyright 2008. © CDC Crown copyright 2008.

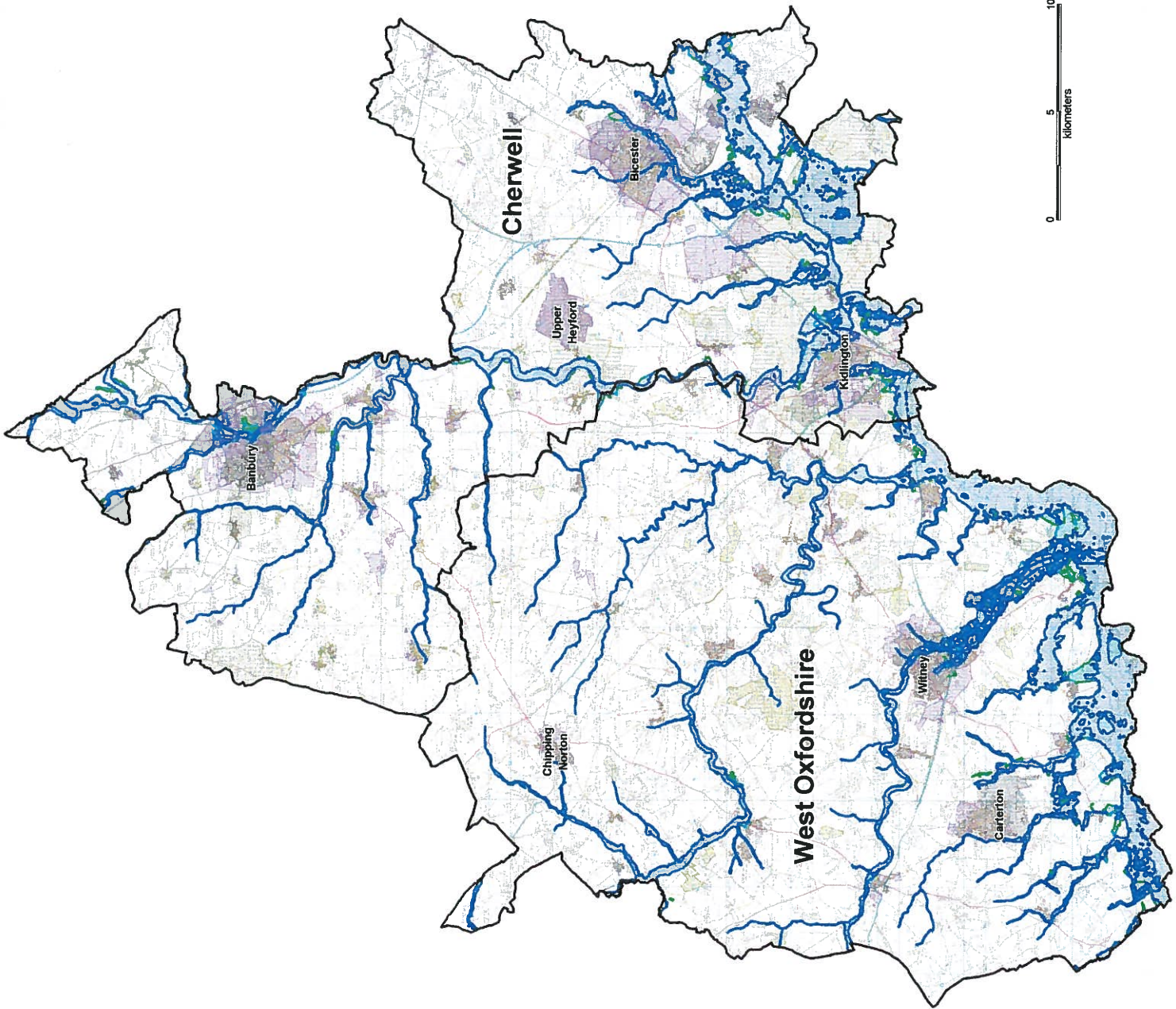
F002	APR 2009	HB	MT
D001	MAR 2008	KB	MT
Revision	Date	Drawn by	Approved



Scott Wilson Ltd,
Central Boulevard,
Blythe Valley Park,
Solihull,
West Midlands,
B90 8AH






WEST OXFORDSHIRE DISTRICT COUNCIL





Cherwell and West Oxfordshire SFRA

FIGURE A-3

Thames Water DG5 Dataset Total Sewer Flooding

-  District Boundaries
-  Urban Areas
-  5 Digit Postcodes Region Boundaries

Total Sewer Flooding Incidents Reported (Combined Internal and external over last 10 years)

-  3 (Medium Incidence)
-  1 to 2 (Low Incidence)

Map shows Thames Water DG5 data at a 5 digit postcode scale.

The DG5 register does not indicate areas or properties at risk of future flooding. It simply indicates areas that have experienced flooding during the last 10 year period as a result of hydraulic inadequacy of the sewer network reported to TW.

It is important to note that maintenance work may have been undertaken by TW since the flooding incident(s) occurred. More detailed information should be requested from TW at the Level 2 stage or for site specific FRAs.

SCALE AS SHOWN

Some features of this map are based on information provided by Thames Water
Copyright © Thames Water 2007

This map is based upon Ordnance Survey material with the permission of Ordnance Survey on behalf of the Controller of Her Majesty's Stationery Office © Crown copyright. Unauthorised reproduction infringes Crown copyright and may lead to prosecution or civil proceedings.
License No. LA 100024316
© WODC Crown copyright 2008.
© CDC Crown copyright 2008.

FO02	APR 2009	HB	MT
D001	MAR 2008	KB	MT
Revision	Date	Drawn by	Approved

Scott Wilson Ltd,
Central Boulevard,
Blythe Valley Park,
Solihull,
West Midlands,
B90 8AH



WEST OXFORDSHIRE
DISTRICT COUNCIL
www.oxfordshire.gov.uk

