

Legend

July 2007 (Environment Agency)

- 1 - 5 Number of properties flooded internally by 'surface water'
- 6 - 10 (by settlement). Note: Points are an indication of the approximate location of the settlement affected
- 11 - 15
- 16 - 20
- 21 - 24

July 2007 (Fire and Rescue Service)

- 1-5 Number of properties flooded internally by 'drainage' and 'ordinary watercourse' (by parish)
- 6-10
- 11-20
- 21-50
- 51-125

© Crown Copyright and database rights 2011 100023349
Contains Environment Agency information © Environment Agency and
database right



Crowmarsh Baitle Burn
100 Priston Crowmarsh
Wallingford
OX10 6SL

www.jbaconsulting.co.uk
+44 (0)1491 836688
+44 (0)1491 051907
info@jbaconsulting.co.uk

Other offices at Abingdon, Banbury, Bicester, Didcot, Farnham, Henley, High Wycombe, Maidenhead, Marlow, Oxford, Reading, Slough, Stroud, Thame, Wallingford, Witney, Wokingham, York.

for

OXFORDSHIRE COUNTY COUNCIL PRELIMINARY FLOOD RISK ASSESSMENT

Map 1: Past flooding - Surface water in July 2007

This document is the property of JBA Consulting Ltd. It shall not be reproduced in whole or in part, nor disclosed to a third party, without the permission of JBA Consulting Ltd.

Drawn by: AB

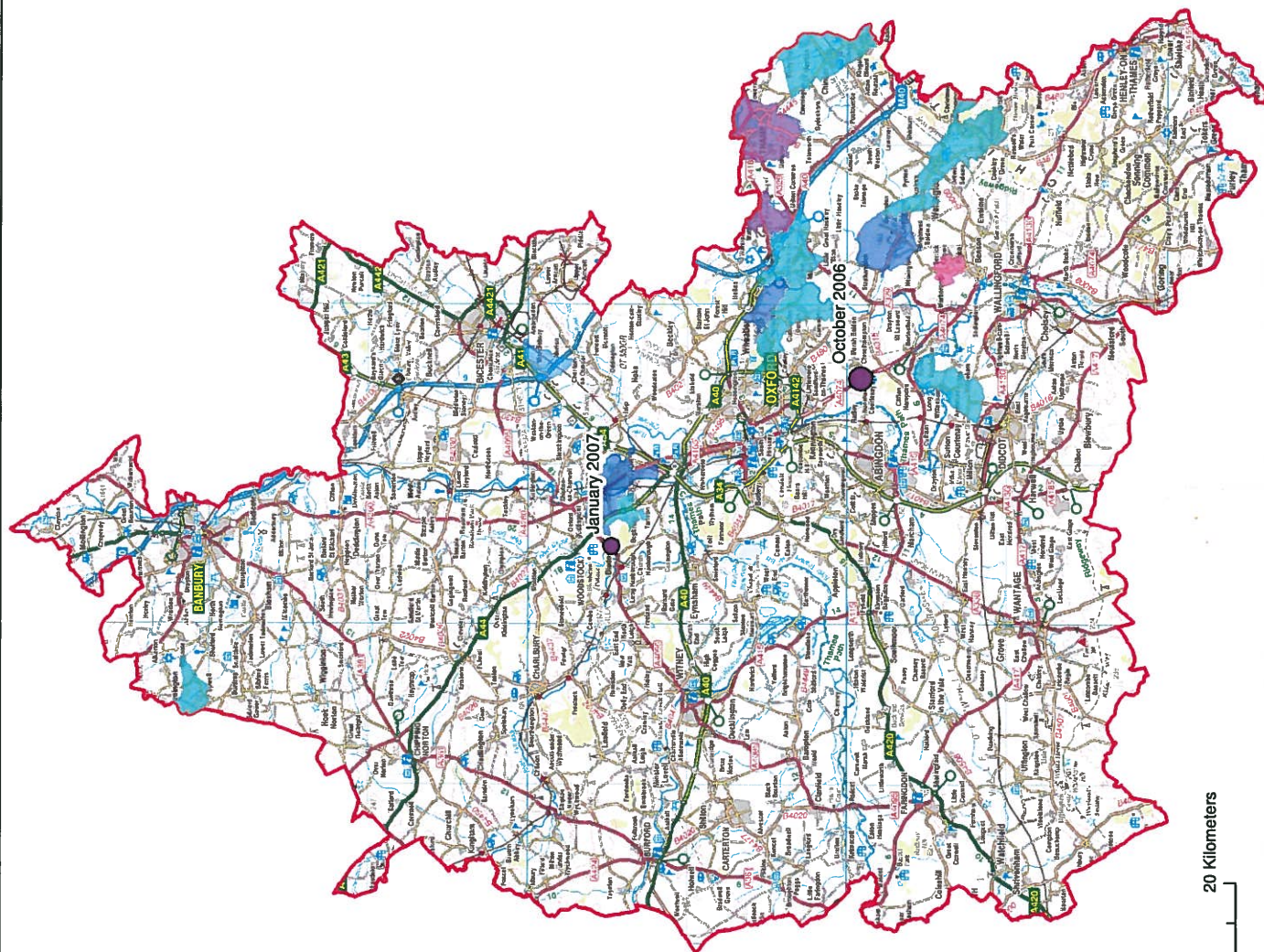
Date: 09/06/2011

Status: FINAL

File Name: NA

Drawing Number: Map 1

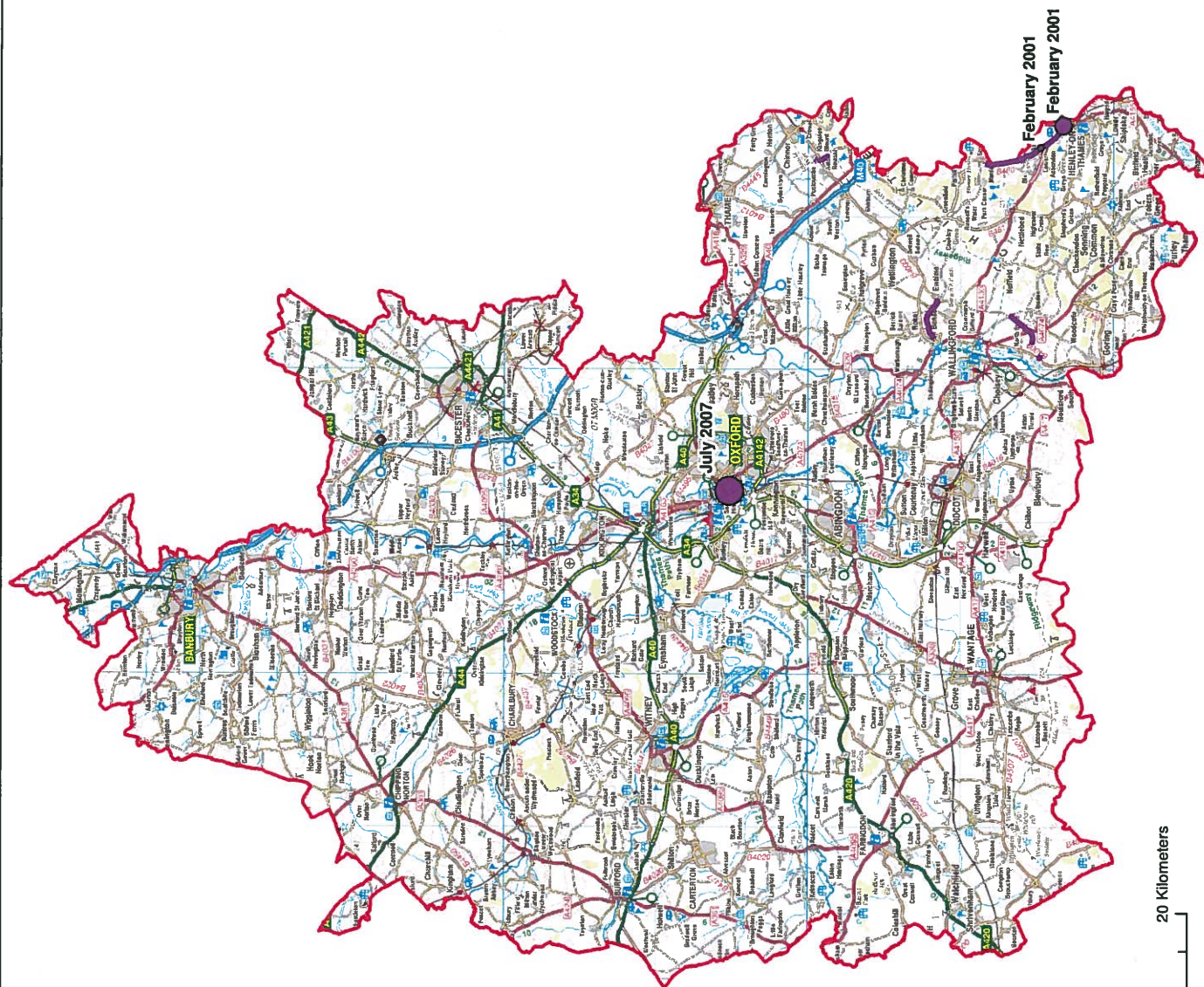
Scale: Not to scale



Drawing Number: Map 2

Drawing Number: Map 2

Original @ A3



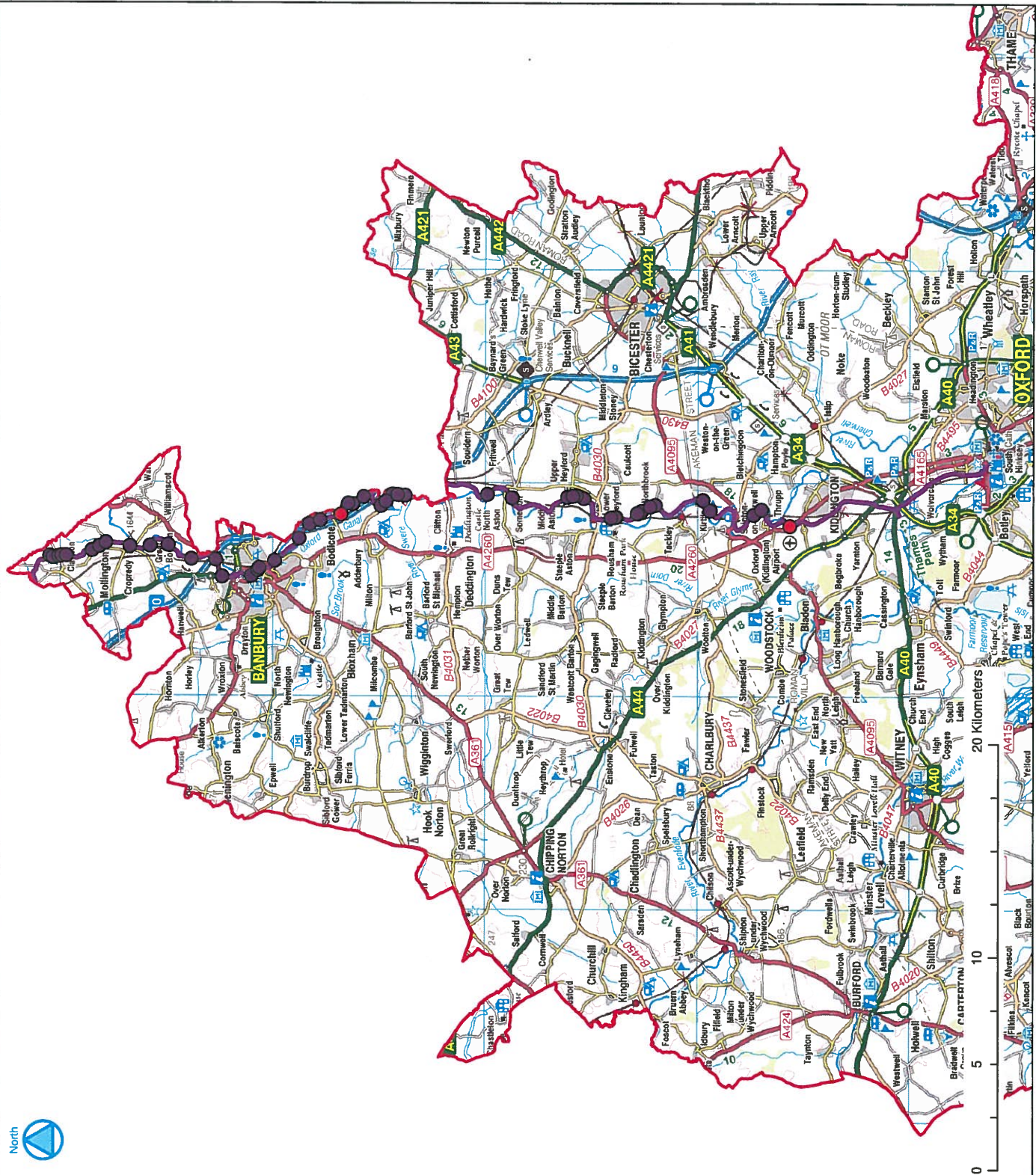
Groundwater flooding locations (2001)

© Crown Copyright and database rights 2011 100023343
Contains Environment Agency Information © Environment Agency and
database right



Map 3: Past flooding - Ground water

Drawing Number: Map 3



Legend

- Breach location
- Overtopping location
- Oxford Canal

© Crown Copyright and database rights 2011 100023543
© Brian Wallerways

Crownpoint Bute Barna
100 Foston, Crowmarsh
Wallingford
OX10 6SL



www.jbaconsulting.co.uk
t: +44 (0)1491 836688
f: +44 (0)1491 836687
e: info@jbaconsulting.co.uk

Other offices: *Amersham, Epsom, Luton, Milton Keynes, Slough, Uxbridge, Watlington, Wokingham, York*

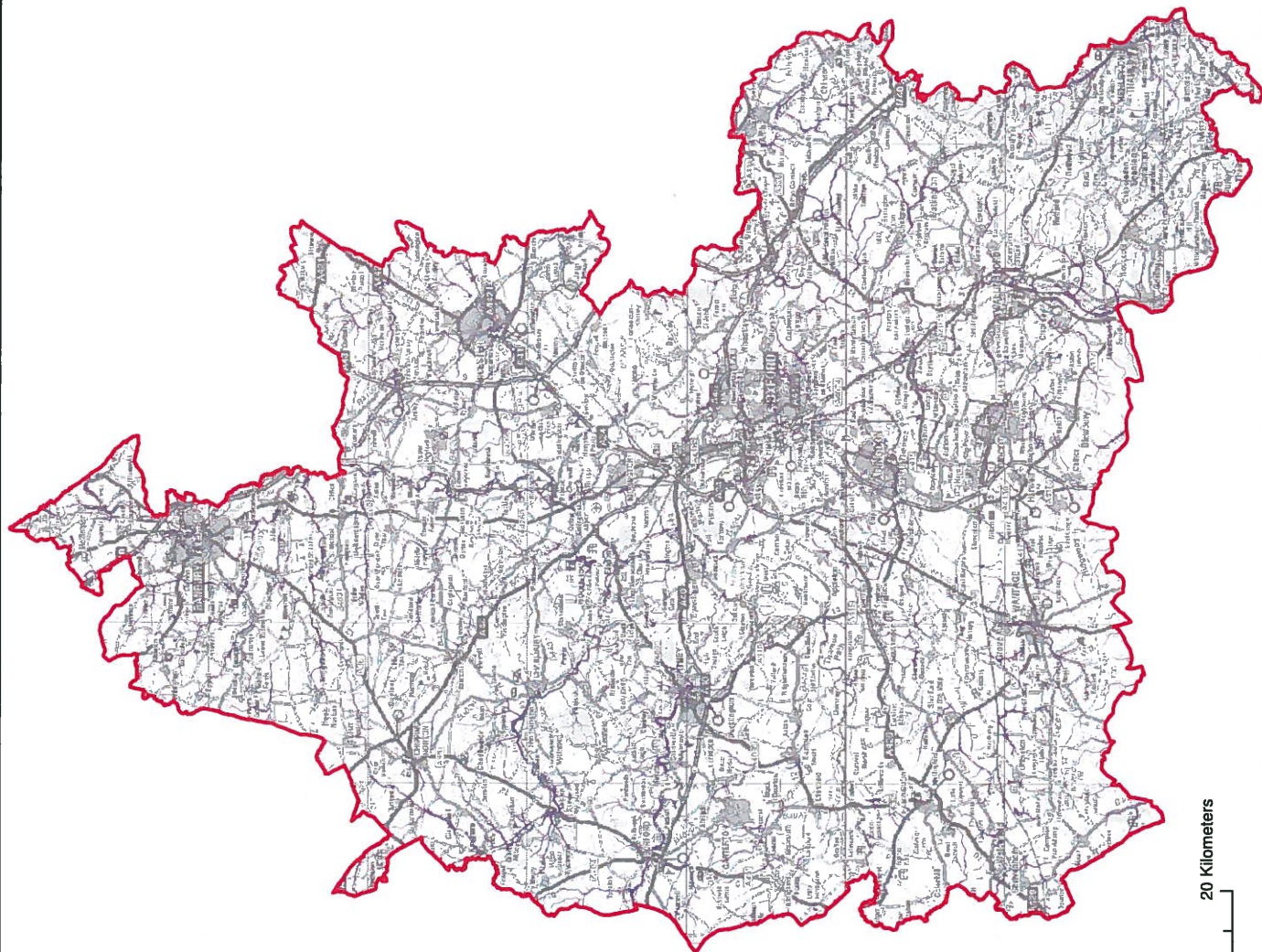
OXFORDSHIRE COUNTY COUNCIL PRELIMINARY FLOOD RISK ASSESSMENT

Map 4: Past flooding - Canal flooding in
July 2007

This document is the property of Jeremy Barr Associates Ltd. It shall not be reproduced in whole or in part, nor disclosed to a third party, without the permission of Jeremy Barr Associates Ltd.

Drawn by: AB
Date: 09/06/2011
Status: FINAL
File Name: N/A
Drawing Number: Map 4

Scale:
Not to scale



Legend

1 in 200 rainfall event (> 0.3m)

This map gives an indication of the broad areas likely to be at risk of surface water flooding. It is not suitable for use at an individual property scale due to the method used.

© Crown Copyright and database rights 2011 100023343
© Environment Agency

Crowmarsh Battle Barns
100 Preston Crowmarsh
Wallingford
OX10 6SL



www.jbaconsulting.co.uk
+44 (0)1491 836688
+44 (0)1491 051907
info@jbaconsulting.co.uk

Other offices at Abingdon, Didcot, Ebbw Vale, High Wycombe, Leamington Spa, Luton, Milton Keynes, Northampton, Oxford, Reading, Slough, Stroud, Swindon, Wokingham, Wrexham.

for

OXFORDSHIRE COUNTY COUNCIL PRELIMINARY FLOOD RISK ASSESSMENT

Map 5: Locally agreed surface water information (Flood Map for Surface Water)

This document is the property of Jeremy Barn Associates Ltd. It shall not be reproduced in whole or in part, nor disclosed to a third party, without the permission of Jeremy Barn Associates Ltd.

Drawn by: AS

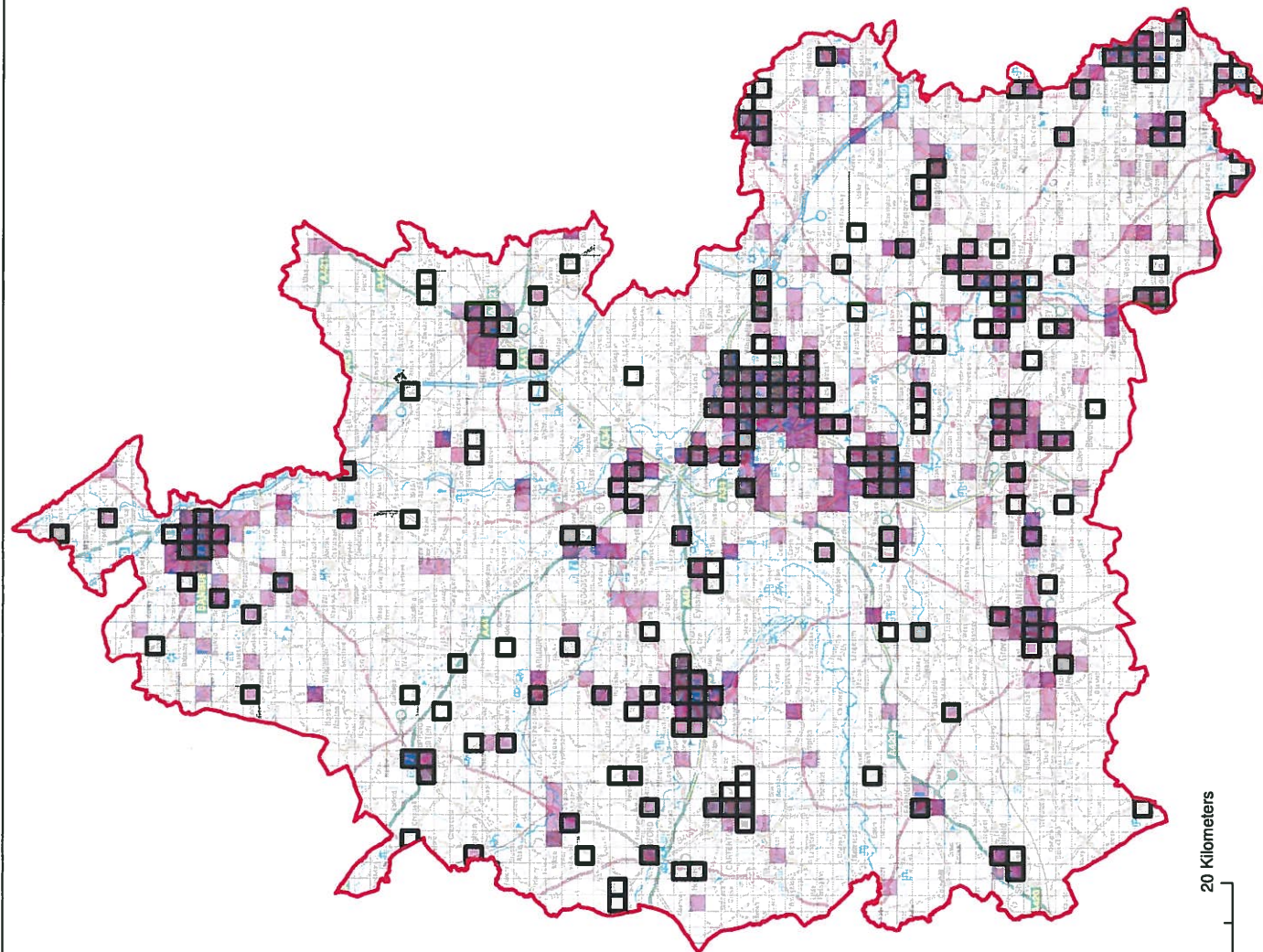
Date: 09/06/2011

Status: FINAL

File Name: N/A

Drawing Number: Map 5

Original @ A3



Explanatory note:
Maps 6a to 6c show the spatial distribution of three receptors (people, critical services and non-residential properties) that may be affected by future surface water flooding in an event with a 1 in 200 chance of occurring in any given year.

This map shows the number of people affected, which can be considered an indicator of the consequences of flooding for human health. The number of people is defined by the Environment Agency guidance as the number of residential (housing) properties multiplied by 2.34.

Calculations for each 1km square were carried out using the Flood Map for Surface Water (1 in 200 >0.3m), Environment Agency's detailed method of counting (based on property outlines) and the National Receptors Database v1.1.

The 1km squares are shaded from light to dark purple as the number of people affected in each square increases. Also overlaid on the map are surface water flooding 'hot spots', or areas where the consequences of a surface water event are likely to be more severe. These have been defined as 1km grid squares where at least one of the three indicators is above the threshold given below (thresholds defined by Defra guidance):

- More than 200 people affected
 - One or more critical services affected
 - More than 20 non-residential properties affected
- The maps show that:
- The main hotspots are in more urban locations due to the concentration of population, industrial and commercial buildings, and critical services.
 - Several more rural communities have less people affected but will still experience an adverse impact, particularly those where local critical services are affected. More detail is given in the main report.

Legend



Hotspots

Number of people

Number of people affected per 1km grid square

< 20

20 - 50

50 - 100

100 - 200

> 200

© Crown Copyright and database rights 2011 100023343

© Environment Agency

Crowmarsh Battle Barns
100 Preston Crowmarsh
Wallingford
OX10 6SL

www.jbaconsulting.co.uk

01491 836688

01491 836688

info@jbaconsulting.co.uk

Other offices: Birmingham, London, Leeds, Manchester, Newcastle, Nottingham, Oxford, Salisbury, Southampton, Wolverhampton

www.oxfordshire.gov.uk

www.oxfordshire.gov.uk

www.oxfordshire.gov.uk

www.oxfordshire.gov.uk

www.oxfordshire.gov.uk

www.oxfordshire.gov.uk

www.oxfordshire.gov.uk

www.oxfordshire.gov.uk

www.oxfordshire.gov.uk

www.oxfordshire.gov.uk

www.oxfordshire.gov.uk

www.oxfordshire.gov.uk

www.oxfordshire.gov.uk

www.oxfordshire.gov.uk

www.oxfordshire.gov.uk

www.oxfordshire.gov.uk

www.oxfordshire.gov.uk

www.oxfordshire.gov.uk

www.oxfordshire.gov.uk

www.oxfordshire.gov.uk

www.oxfordshire.gov.uk

www.oxfordshire.gov.uk

www.oxfordshire.gov.uk

www.oxfordshire.gov.uk

www.oxfordshire.gov.uk

www.oxfordshire.gov.uk

www.oxfordshire.gov.uk

OXFORDSHIRE COUNTY COUNCIL
PRELIMINARY FLOOD RISK ASSESSMENT
Map 6a: People affected by flooding in a rainfall event with a 1 in 200 chance of occurring in any given year

This document is the property of Jeremy Barn Associates Ltd. It shall not be reproduced in whole or in part, nor disclosed to a third party, without the permission of Jeremy Barn Associates

Scale: Not to scale

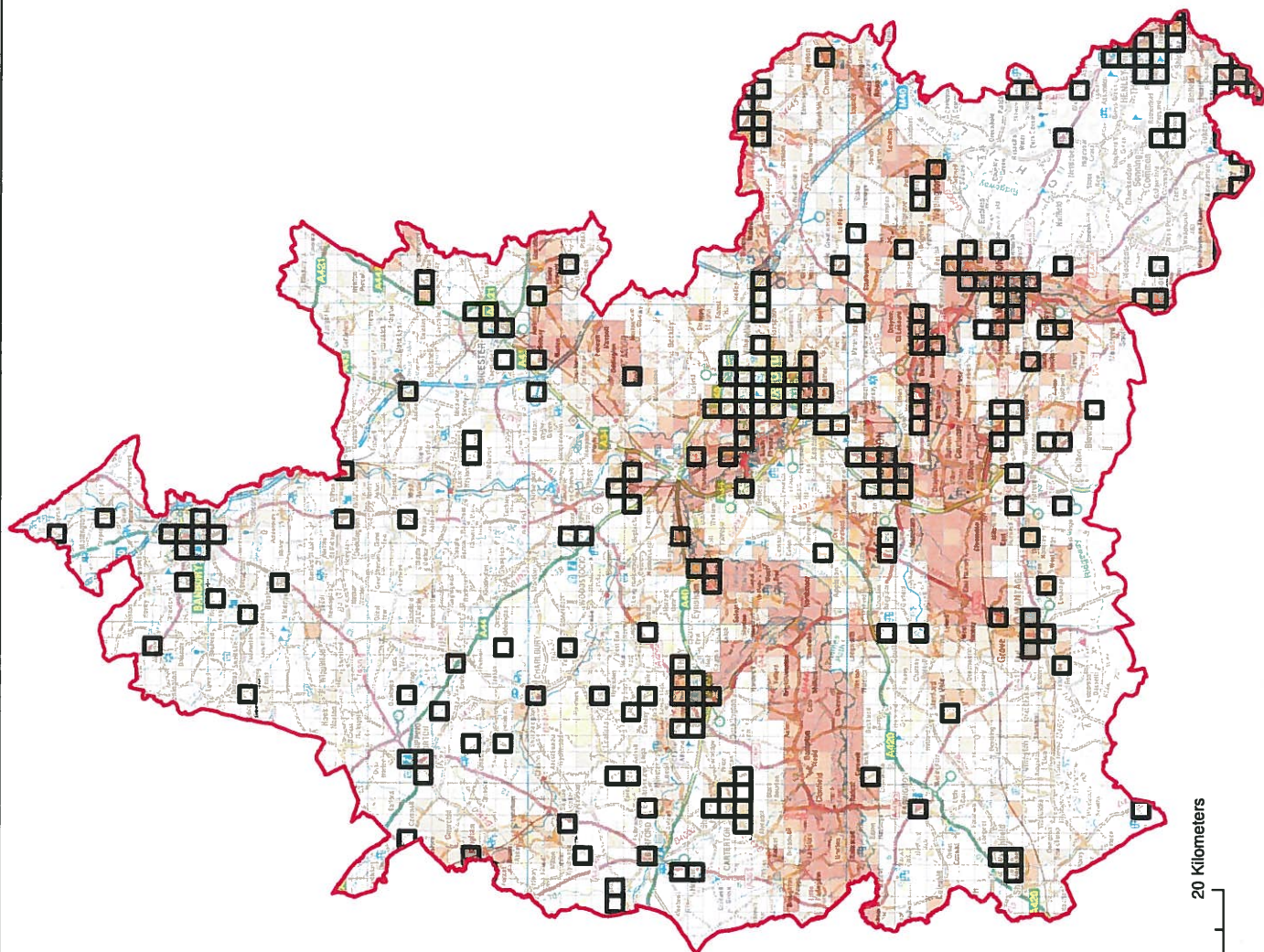
Drawn by: AC

Date: 09/06/2011

Status: FINAL

File Name: N/A

Drawing Number: Map 6a



Legend

□ Surface water hotspots

□ Areas Susceptible to Groundwater Flooding

■ >= 75%

■ >= 50% < 75%

■ >= 25% < 50%

□ < 25%

Proportion of each 1km square that is susceptible to groundwater emergence

© Crown Copyright and database rights 2011 10002543
© Environment Agency



Crowmarsh Battle Barns
100 Preston Crowmarsh
Wallingford
OX10 6SL

www.jbaconsulting.co.uk

t +44 (0)1491 836688

f +44 (0)1491 051807

e info@jbaconsulting.co.uk

Other Offices at Abingdon, Bicester, Didcot, High Wycombe, Oxford, Reading, Slough, Swindon, Weymouth, Wokingham

www.oxfordshire.gov.uk

for

OXFORDSHIRE COUNTY COUNCIL PRELIMINARY FLOOD RISK ASSESSMENT

Map 7: Areas Susceptible to Groundwater Flooding

This document is the property of Jeremy Barry Associates Ltd. It shall not be reproduced in whole or in part, nor disclosed to a third party, without the permission of Jeremy Barry Associates

Scale:

Drawn by: AB

Date: 09/08/2011

Status: FINAL

File Name: N/A

Not to scale

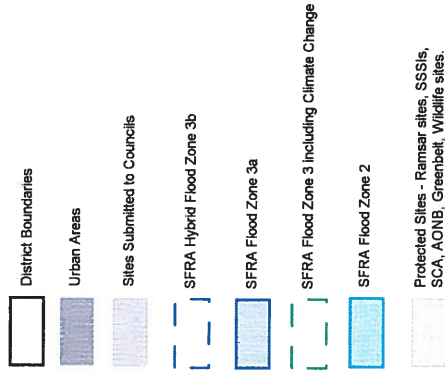
Drawing Number: Map 7



Cherwell and West Oxfordshire SFRA

FIGURE A-1

Overview of Potential Constraints to Development



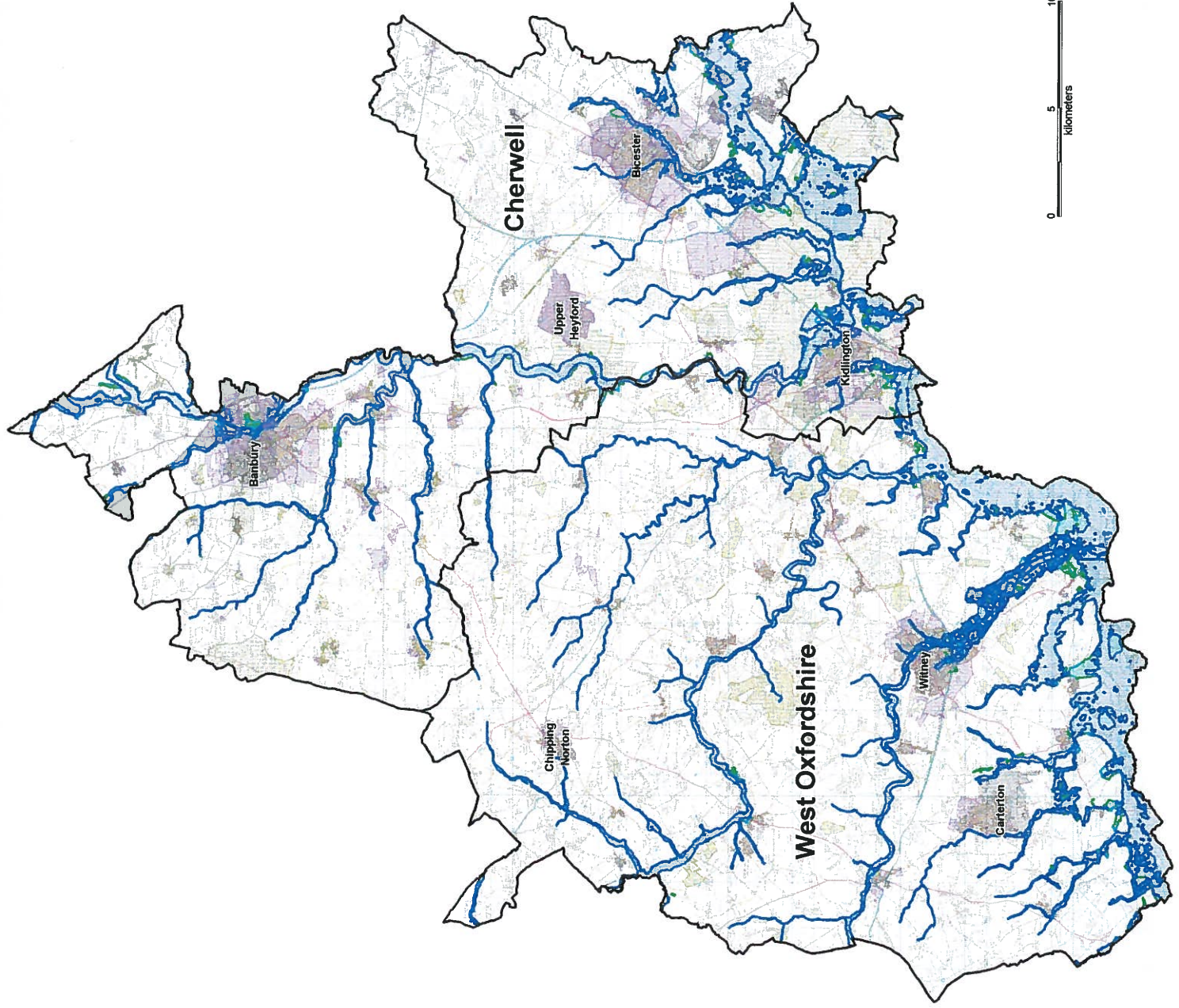
SCALE AS SHOWN

Some features of this map are based on information provided by the Environment Agency
Copyright © Environment Agency, 2007

This map is based upon Ordnance Survey material with the permission of Ordnance Survey on behalf of the Controller of Her Majesty's Stationery Office © Crown copyright.
Unauthorised reproduction infringes Crown copyright and may lead to prosecution or civil proceedings.
License No. LA 100024316
© WODC Crown copyright 2008.
© CDC Crown copyright 2008.

Revision	Date	Drawn by	Approved
F002	APR 2009	HB	MT
D001	MAR 2008	KB	MT

Scott Wilson Ltd,
Central Boulevard,
Blythe Valley Park,
Solihull,
West Midlands,
B90 8AH

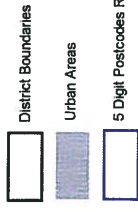




Cherwell and West Oxfordshire SFRA

FIGURE A-3

Thames Water DG5 Dataset Total Sewer Flooding



Total Sewer Flooding Incidents Reported
(Combined Internal and external over last 10 years)

3 (Medium Incidence)
1 to 2 (Low Incidence)

Map shows Thames Water DG5 data at a 5 digit postcode scale.

The DG5 register does not indicate areas or properties at risk of future flooding. It simply indicates areas that have experienced flooding during the last 10 year period as a result of hydraulic inadequacy of the sewer network reported to TW.

It is important to note that maintenance work may have been undertaken by TW since the flooding incident(s) occurred. More detailed information should be requested from TW at the Level 2 stage or for site specific FRAs.

SCALE AS SHOWN

Some features of this map are based on information provided by Thames Water
Copyright © Thames Water 2007

This map is based upon Ordnance Survey material with the permission of Ordnance Survey on behalf of the Controller of Her Majesty's Stationery Office © Crown copyright. Unauthorised reproduction infringes Crown copyright and may lead to prosecution or civil proceedings.
License No. LA 100024316
© WODC Crown copyright 2008
© CDC Crown copyright 2008

Revision	Date	Drawn by	Approved
F002	APR 2009	HB	MT
D001	MAR 2008	KB	MT

Scott Wilson Ltd,
Central Boulevard,
Blythe Valley Park,
Solihull,
West Midlands,
B90 8AH

