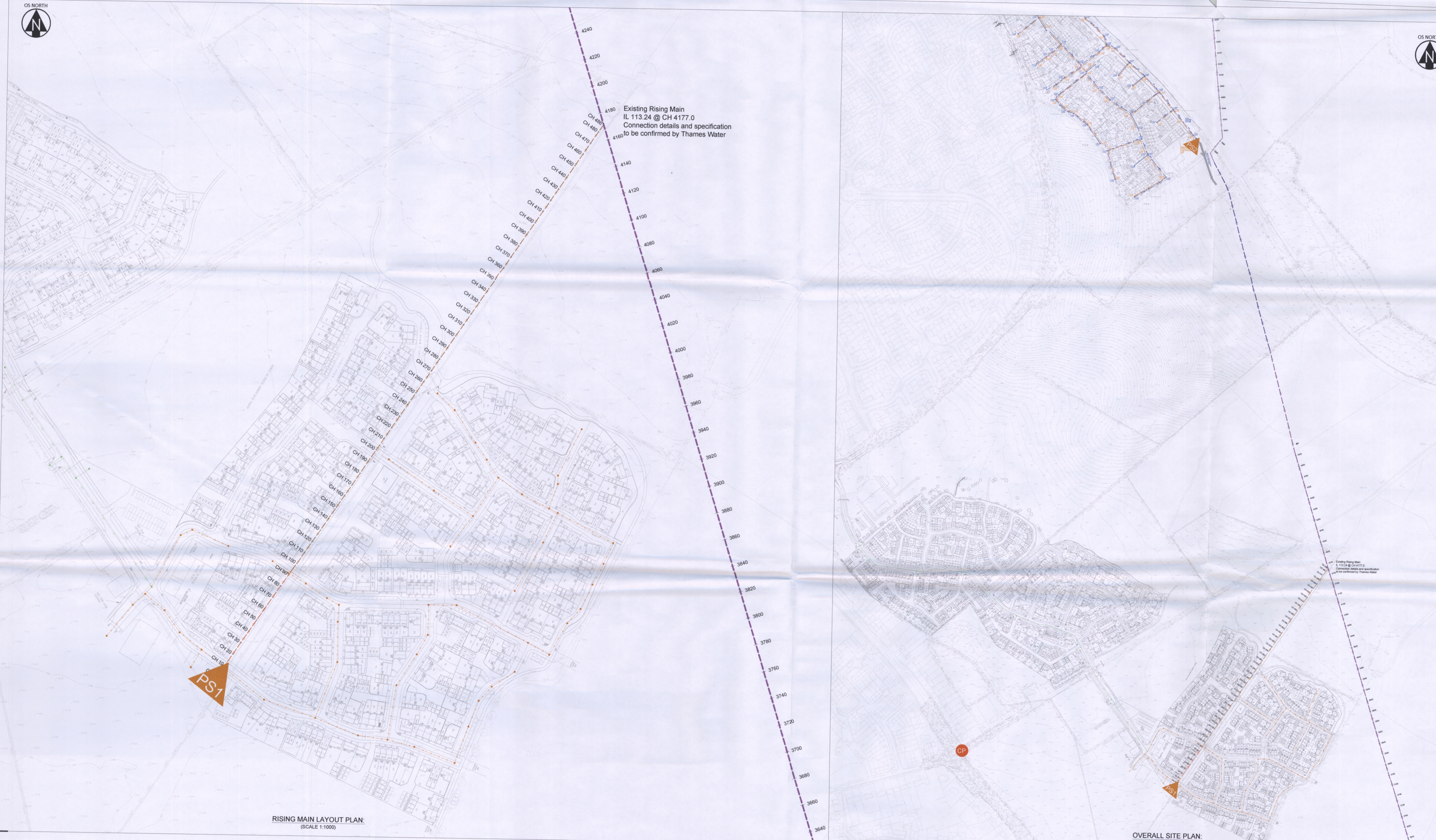


PROPOSED FOUL RISING MAIN
SCALE: H 1:500, V 1:100

Chainage	Existing Levels	Proposed Levels	Level Difference	Vertical Geometry
00.000	118.805	114.000	4.805	G=1:1 L=3
10.000	118.811	117.227	1.584	G=1:150 L=91
20.000	118.888	117.294	1.595	
30.000	118.978	117.380	1.616	
40.000	119.054	117.427	1.627	
50.000	119.128	117.494	1.634	
60.000	119.149	117.550	1.598	
70.000	119.271	117.627	1.644	
80.000	119.409	117.694	1.715	
90.000	119.453	117.761	1.692	
100.000	119.440	117.751	1.689	
110.000	119.275	117.684	1.591	G=1:150 L=91
120.000	119.236	117.617	1.618	
130.000	119.412	117.550	1.862	
140.000	119.502	117.484	2.108	
150.000	119.570	117.417	2.153	
160.000	119.319	117.350	1.968	
170.000	119.203	117.284	1.919	
180.000	119.199	117.217	1.982	
190.000	119.180	117.150	2.030	
200.000	119.186	117.084	2.104	
210.000	210.000	117.017	2.178	2250 G=1:150 L=385
220.000	220.000	116.950	2.244	
230.000	230.000	116.884	2.330	
240.000	240.000	116.817	2.388	
250.000	250.000	116.750	2.348	
260.000	260.000	116.683	2.182	
270.000	270.000	116.617	2.168	
280.000	280.000	116.550	2.181	
290.000	290.000	116.483	2.270	
300.000	300.000	116.417	2.325	
310.000	310.000	116.350	2.398	G=1:14 L=97
320.000	320.000	116.283	2.290	
330.000	330.000	116.217	2.180	
340.000	340.000	116.150	2.165	
350.000	350.000	116.083	2.209	
360.000	360.000	116.016	2.234	
370.000	370.000	115.950	2.226	
380.000	380.000	115.883	2.216	
390.000	390.000	115.816	2.231	
400.000	400.000	115.750	2.212	
410.000	410.000	115.683	2.142	
420.000	420.000	115.616	2.080	
430.000	430.000	115.550	2.045	
440.000	440.000	115.483	1.949	
450.000	450.000	115.416	1.805	
460.000	460.000	115.349	1.701	
470.000	470.000	115.283	1.570	
480.000	480.000	115.216	1.705	
490.000	490.000	115.150	2.647	
500.000	498.281	116.412	113.465	



- KEY:**
- PROPOSED FOUL RISING MAIN
 - PROPOSED FOUL GRAVITY SEWER
 - EXISTING FOUL RISIN MAIN (ASSUMED LOCATION)
 - EXISTING FOUL RISIN MAIN (SURVEYED LOCATION)
 - ▲ PROPOSED ON-PLOT FOUL SEWER
 - ▲ PROPOSED FOUL PUMPING STATION
 - CANAL LANE CONNECTION POINT

NOTES:
 PROPOSED FOUL RISING MAIN AND GRAVITY SEWER ARE SHOWN TO BE MINIMUM 1.2m BELOW FINISHED GROUND LEVEL.
 ASSUMED DEPTH OF EXISTING 500Ø RISING MAIN IS 1.5M

Rev	Date	Description	By	EC
A	01/12/15	First Issue	ROB	EC

Hydrock
 Temple Court, 13a Cathedral Road, Cardiff, CF11 9HA.
 TEL: 02920 023 665 or visit www.hydrock.com

This drawing is the copyright of Hydrock Ltd. No liability will be accepted for any amendments to this drawing either printed or digital by parties other than Hydrock.

Client: **BARRATT HOMES**

Project: **LONGFORD PARK FOUL DRAINAGE STRATEGY APPENDIX A**
 Project Number: **C151016**

Drawing Title: **PROPOSED FOUL RISING MAIN LAYOUT AND LONGSECTION**

Drawn: RDS
 Checked: EC
 Scale: AS SHOWN
 Drawn Date: NOV 2015
 First Issue: 00/00/0000

Drawing Status: **INFORMATION**
 Drawing No: **C151016 - SKC02** Revision **A**

RISING MAIN LAYOUT PLAN:
(SCALE 1:1000)

OVERALL SITE PLAN:
(SCALE 1:2500)

16/00042/DISC