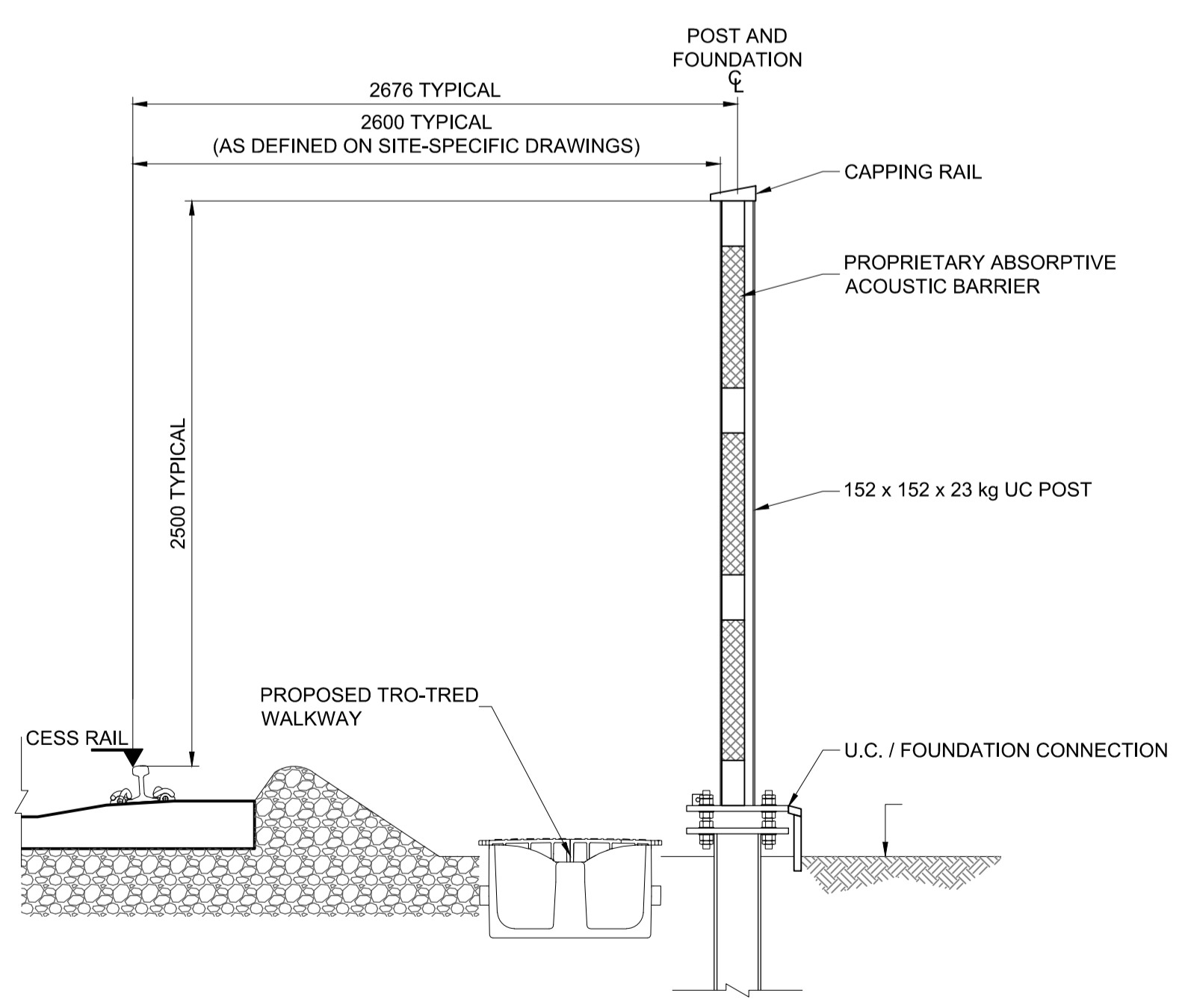


TYPICAL RAILSIDE ELEVATION AT BARRIER END

1:25

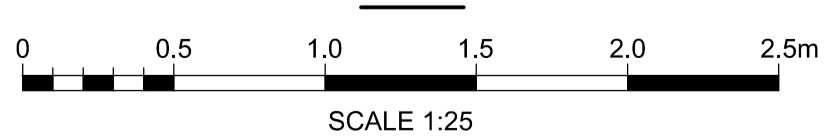


- Legend/Notes
- ALL DIMENSIONS ARE IN MILLIMETRES UNLESS NOTED OTHERWISE.
 - ALL LEVELS ARE IN METRES ABOVE THE EAST WEST RAIL PHASE 1 PROJECT LEVEL DATUM.
 - ACOUSTIC BARRIER SPECIFICATION (AS AGREED WITH ENVIRONMENTAL CONSULTANT):
 - OVERALL PERFORMANCE OF THE BARRIER FOR NOISE ABSORPTION SHALL PROVIDE A MINIMUM $D_{L\alpha}$ OF 12-15dB IN ACCORDANCE WITH BS EN 16272-3-1.
 - NOISE ABSORPTION PERFORMANCE SHALL BE TESTED IN ACCORDANCE WITH BS EN 16272-1 AND RESULTS PRESENTED IN ACCORDANCE WITH THAT STANDARD FOR ACCEPTANCE.
 - OVERALL PERFORMANCE OF THE BARRIER FOR NOISE INSULATION SHALL PROVIDE A MINIMUM D_L OF 34dB IN ACCORDANCE WITH BS EN 16272-3-1.
 - NOISE INSULATION PERFORMANCE SHALL BE TESTED IN ACCORDANCE WITH BS EN 16272-2 AND RESULTS PRESENTED IN ACCORDANCE WITH THAT STANDARD FOR ACCEPTANCE.
 - IT IS NOT NECESSARY TO INCLUDE THE GRAVEL BOARD IN THE NOISE ABSORPTION TESTING.
 - ALL PANELS SHALL CARRY A CE MARKING IN ACCORDANCE WITH THE CONSTRUCTION PRODUCTS REGULATIONS (2013).
 - IN ACCORDANCE WITH THE CONSTRUCTION PRODUCTS REGULATIONS (2013) A DECLARATION OF PERFORMANCE SHALL BE PROVIDED TO DEMONSTRATE CONFORMITY WITH THIS SPECIFICATION.
 - ALL TIMBER SHALL BE FROM FSC-CERTIFIED SOURCES.



TYPICAL CROSS-SECTION THROUGH BARRIER

1:25



TYPICAL VIEW OF BARRIER FROM RAIL SIDE



TYPICAL VIEW OF BARRIER FROM PUBLIC SIDE

P01	10/08/15	FOR PLANNING	MB	LD	DS
Rev	Date	Description of Revisions	Drawn	Chkd	Appr

Status

FOR PLANNING



Contractor(s)

ATKINS

The Axis
10 Holiday Street
Birmingham
West Midlands
B1 1TF
Tel: +44 (0)121 483 5000
Fax: +44 (0)121 483 6333

Project
EAST WEST RAIL PHASE 1

Drawing Title
ACOUSTIC NOISE BARRIERS
GENERIC PLANNING DRAWING

Designed	VARIOUS	Signed		Date	14/08/2015
Drawn	M. BUDD	Signed		Date	14/08/2015
Checked	L. DEMPSEY	Signed		Date	14/08/2015
Approved	D. STEER	Signed		Date	14/08/2015
Scale(s)	AS SHOWN		ELR & Mileage		