

FOR CONTINUATION
REFER LLA DWG 1619 01

LEGEND

- Existing Vegetation
- Proposed Trees
- Proposed Specimens
- Native Hedgerow
- Hedging
- Shrub/herbaceous planting
- Bulbous planting
- Grass: Wildflower
- Grass: Mown

GENERAL NOTES

This drawing is to be used for planting information only, and is subject to alteration through changes to the site layout or until approved by the area designer.

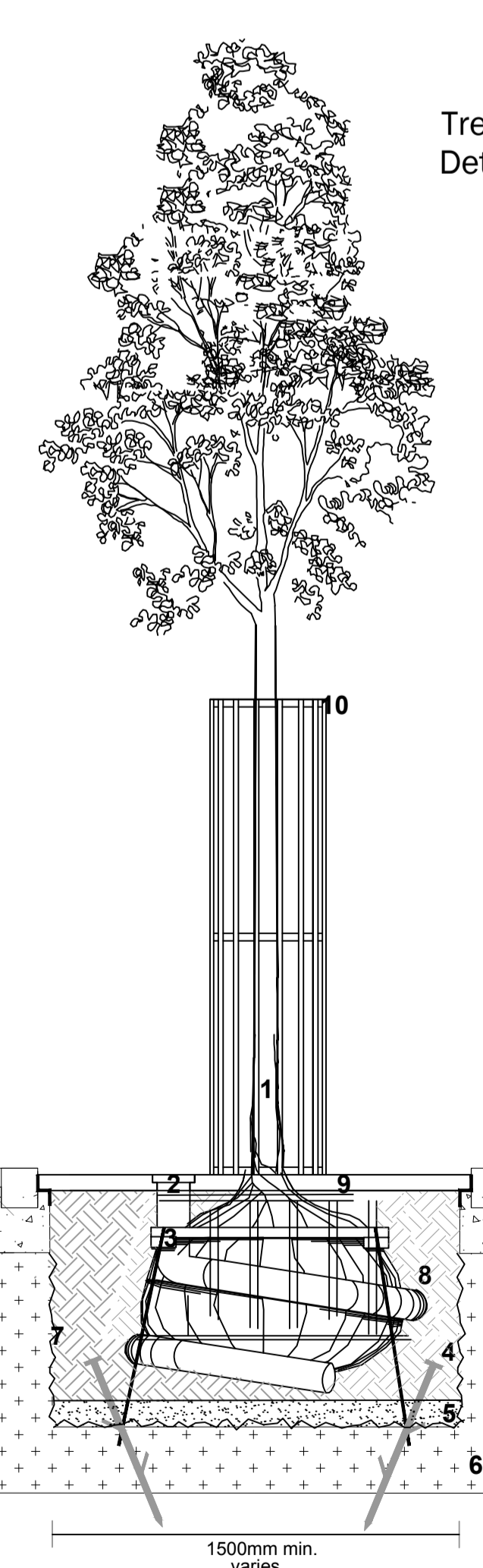
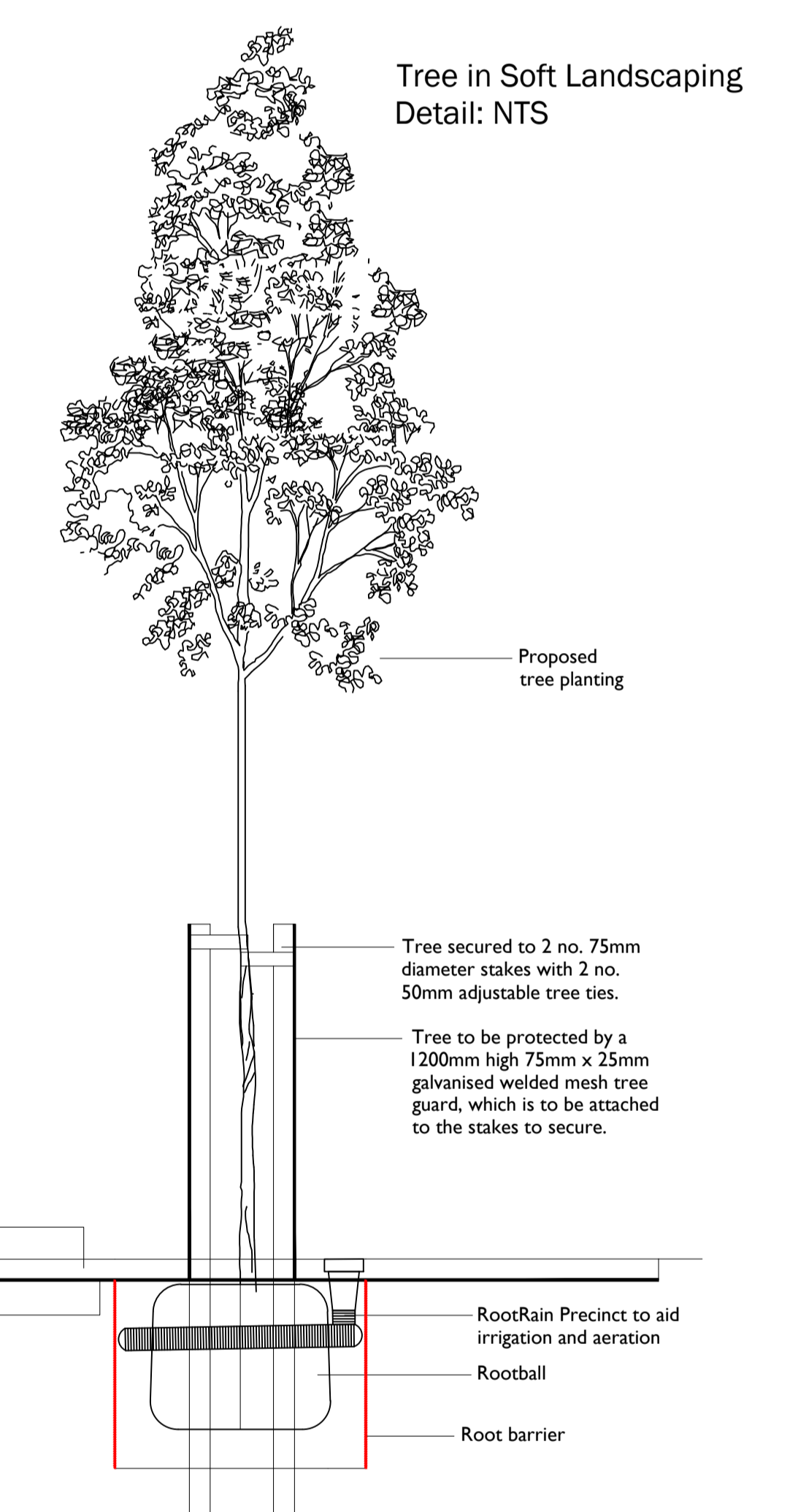
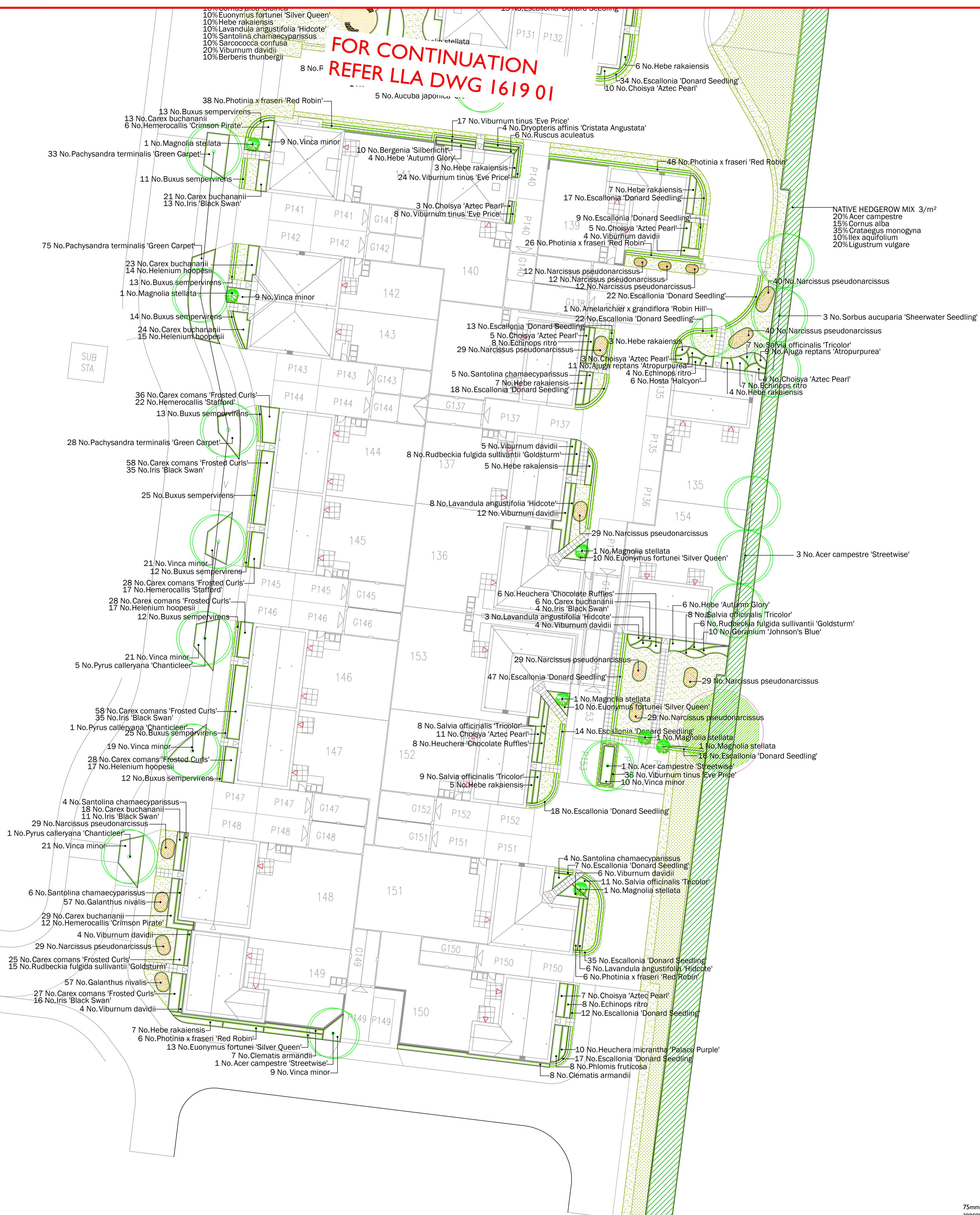
Any species substitution by the contractor must be verified with the Landscape Architect through the Job Architect.

This layout must be checked in accordance with HBCO Standards 2013 (Chapter 4.2 - Building Near Trees & Chapter 9.2 - Drives, Paths and Landscaping) by the Regional Engineer prior to implementation.

Excavations: Contractors must ensure that they have full information relating to service and drainage positions before undertaking any excavations.

Root barriers to be used in association with tree planting adjacent to kerbs / services / footpaths etc. (Greenleaf ReRoot products or similar application, in accordance with manufacturers instructions).

NOTES:
Please note all planting mixes should be planted as follows:
Shrubs/Grasses to be planted in groups of 3-5 with herbaceous to be planted randomly throughout mix area.



PLANTING SCHEDULE

TREES

Number	Plant Name	Height	Girth	Specification
9 No.	Amelanchier x grandiflora 'Robin Hill'	450-625cm	16-18cm	Extra Heavy Standard: 3x: RB: Clear Stem min. 200cm
5 No.	Sorbus aucuparia 'Sheerwater Seeding'	400-500cm	18-20cm	Extra Heavy Standard: 3x: RB: Clear Stem min. 200cm
5 No.	Acer campestre 'Streetwise'	400-450cm	16-18cm	Extra Heavy Standard: 3x: RB: Clear Stem min. 200cm
3 No.	Acer campestre 'Streetwise'	400-450cm	18-20cm	Extra Heavy Standard: 3x: RB: Clear Stem min. 200cm
9 No.	Pyrus calleryana 'Chanticleer'	500-550cm	20-25cm	Semi-Mature: 3x: RB: Clear Stem min. 200cm
2 No.	Tilia cordata 'Greenspire'	400-450cm	16-18cm	Extra Heavy Standard: 3x: RB: Clear Stem min. 200cm

Total: 33 No.

HEDGING

Number	Plant Name	Height	Diameter	Container	Specification	Density
330 No.	Buxus sempervirens	30-40cm	5L	Bushy: 8 brks: C	3/m	
372 No.	Escallonia 'Donard Seeding'	40-60cm	5L	Bushy: 5 brks: C	3/m	
315 No.	Photinia x fraseri 'Red Robin'	40-60cm	5-7.5L	Branched: 6 brks: C	3/m	
369 No.	Viburnum tinus 'Eve Price'	30-40cm	5L	Bushy: 5 brks: C	3/m	

Total: 1386 No.

SHRUBS

Number	Plant Name	Height	Diameter	Container	Specification	Density
22 No.	Aucuba japonica 'Crotonifolia'	40-60cm	5L	Bushy: 3 brks: C	2/m ²	
29 No.	Buxus sempervirens	30-40cm	5L	Bushy: 8 brks: C	3/m	
63 No.	Choisya 'Aztec Pearl'	30-40cm	5L	Bushy: 6 brks: C	2/m ²	
68 No.	Cornus alba 'Spaethii'	60-80cm	5L	Branched: 4 brks: C	3/m ²	
21 No.	Euonymus fortunei 'Emerald Gaiety'	25-30cm	30-40cm	5-7.5L	Bushy: 9 brks: C	2/m ²
49 No.	Euonymus fortunei 'Silver Queen'	20-30cm	30-40cm	5L	Bushy: 7 brks: C	3/m ²
16 No.	Hebe 'Autumn Glory'	30-40cm	5L	Bushy: 7 brks: C	2/m ²	
70 No.	Hebe rakaiensis	20-30cm	5-7.5L	Bushy: 7 brks: C	2/m ²	
42 No.	Lavandula angustifolia 'Hidcote'	20-30cm	5L	Bushy: 7 brks: C	2/m ²	
19 No.	Magnolia stellata	150-175cm	45L	Branched: 5 brks: C	Counted	
320 No.	Pachysandra terminalis 'Green Carpet'	20-30cm	5L	Several Shoots: 11 brks: C	3/m ²	
11 No.	Philonis fruticosa	30-40cm	5-7.5L	Branched: 5 brks: C	2/m ²	
12 No.	Photinia x fraseri 'Red Robin'	40-60cm	5-7.5L	Branched: 6 brks: C	2/m ²	
19 No.	Rosmarinus officinalis 'Severn Sea'	40-60cm	5L	Bushy: 5 brks: C	2/m ²	
59 No.	Ruscus aculeatus	30-40cm	3L	Several Shoots: 3 brks: C	4/m ²	
19 No.	Santolina chamaecyparissus	30-40cm	5L	Bushy: 9 brks: C	2/m ²	
11 No.	Skimmia japonica 'Kew White'	30-40cm	5L	Bushy: 4 brks: C	3/m ²	
8 No.	Spiraea japonica 'Goldflame'	30-40cm	5-7.5L	Bushy: 7 brks: C	2/m ²	
73 No.	Viburnum davidii	30-40cm	5L	Bushy: 5 brks: C	2/m ²	
213 No.	Vinca minor	30-40cm	5-7.5L	Several Shoots: 5 brks: C	2/m ²	

Total: 1144 No.

CLIMBERS

Number	Plant Name	Height	Container	Specification	Density
20 No.	Clematis armandii	100-150cm	10L	Caned: Several Shoots: 3 brks: C	1/m ²

Total: 20 No.

BULBS

Number	Plant Name	Specification	Density
28 No.	Allium 'Purple Sensation'	Full Pot: C	3/m ²
244 No.	Galanthus nivalis	Grade 5/6	20/m ²
648 No.	Narcissus pseudonarcissus	Grade 5/6	10/m ²

Total: 920 No.

FERNS

Number	Plant Name	Container	Specification	Density
15 No.	Dryopteris affinis 'Cristata Angustata'	3L	Full Pot: C	2/m ²
10 No.	Dryopteris filix-mas	3L	Full Pot: C	2/m ²

Total: 25 No.

HERBACEOUS

Number	Plant Name	Container	Specification	Density
52 No.	Ajuga reptans 'Atropurpurea'	3L	Full Pot: C	6/m ²
15 No.	Bergenia 'Bressingham Ruby'	3L	Full Pot: C	5/m ²
28 No.	Bergenia 'Silberlicht'	3L	Full Pot: C	5/m ²
27 No.	Echinops ritro	3L	Full Pot: C	3/m ²
21 No.	Geranium 'Johnson's Blue'	3L	Full Pot: C	4/m ²
61 No.	Helenium 'Moerheim Beauty'	3L	Full Pot: C	3/m ²
84 No.	Helenium hoopesii	3L	Full Pot: C	3/m ²
8 No.	Helenium hoopesii 'The Bishop'	3L	Full Pot: C	4/m ²
31 No.	Heliosorus niger	3L	Full Pot: C	4/m ²
12 No.	Heliosorus x hybridus	3L	Full Pot: C	4/m ²
18 No.	Hemerocallis 'Crimson Pirate'	5-7.5L	Full Pot: C	2/m ²
66 No.	Hemerocallis 'Stafford'	3L	Full Pot: C	3/m ²
35 No.	Heuchera 'Chocolate Ruffles'	3L	Full Pot: C	4/m ²
5 No.	Heuchera 'Key Lime Pie'	3L	Full Pot: C	4/m ²
10 No.	Heuchera micrantha 'Palace Purple'	3L	Full Pot: C	4/m ²
43 No.	Hosta 'Halcyon'	3L	Full Pot: 2 Buds: C	4/m ²
180 No.	Iris 'Black Swan'	3L	Full Pot: C	3/m ²
109 No.	Rudbeckia fulgida sullivanii 'Goldsturm'	3L	Full Pot: C	3/m ²
66 No.	Salvia officinalis 'Tricolor'	3L	Full Pot: C	4/m ²

Total: 871 No.

GRASSES

Number	Plant Name	Height	Container	Specification	Density
284 No.	Carex buchananii	40-60cm	5L	Full Pot: C	5/m ²
487 No.	Carex comans 'Frosted Curis'	3L	Full Pot: C	5/m ²	

Total: 771 No.

NATIVE HEDGEROW MIX

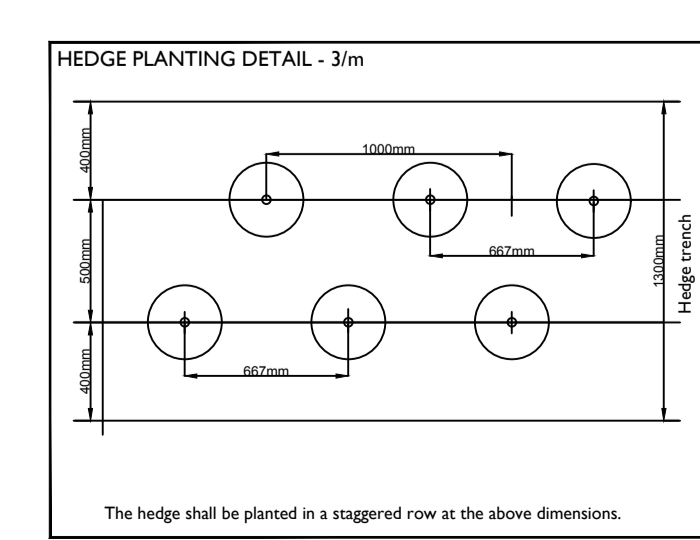
Number	Species	Specification	Density	Mix Species Contribution
744 No.	Crataegus monogyna	1+1: Transplant - seed raised: Branched: 4 brks: C	3/m ²	35%
425 No.	Acer campestre	1+1: Transplant - seed raised: C	3/m ²	20%
319 No.	Cornus alba	Branched: 3 brks: C	3/m ²	15%
425 No.	Ligustrum vulgare	Branched: 4 brks: C	3/m ²	20%
213 No.	Ilex aquifolium	Leader with Lateralis: C	3/m ²	10%

Total: 2126 No. Total: 100%

HOUSING SHRUB MIX

Number	Species	Specification	Density	Mix Species Contribution
25 No.	Cornus alba 'Sibirica'	Branched: 4 brks: C	3/m ²	10%
49 No.	Viburnum davidii	Bushy: 4 brks: C	3/m ²	20%
25 No.	Choisya 'Aztec Pearl'	Bushy: 6 brks: C	3/m ²	10%
25 No.	Sarcococca confusa	Bushy: 6 brks: C	3/m ²	10%
25 No.	Euonymus fortunei 'Silver Queen'	Bushy: 7 brks: C	3/m ²	10%
25 No.	Hebe rakaiensis	Bushy: 7 brks: C	3/m ²	10%
25 No.	Lavandula angustifolia 'Hidcote'	Bushy: 7 brks: C	3/m ²	10%
25 No.	Berberis thunbergii	Bushy: 7 brks: C	3/m ²	10%
25 No.	Santolina chamaecyparissus	Bushy: 9 brks: C	3/m ²	10%

Total: 249 No. Total: 100%



Rev. Date Description

A	22.10.14	New layout / planting amendments
B	27.10.14	New layout / planting amendments
C	29.10.14	New layout / planting amendments
D	25.11.14	New layout / planting amendments
E	05.02.15	New layout, amended gate plans
F	25.02.15	added/planting amendments
G	08.04.15	New layout Added
H	04.11.15	New layout, amended gate plans
I	01.12.15	New layout, amended gate plans
J	29.03.16	New layout / tree amendments

Title: Detailed Planting Proposals
2 of 2
Project: Inverloch Park, Booster
Client: Doonachie Living
Date: April 19 2016
Scale: 1:5000 AD
Drawing No: 1619 02 J

LIZ LAKE ASSOCIATES