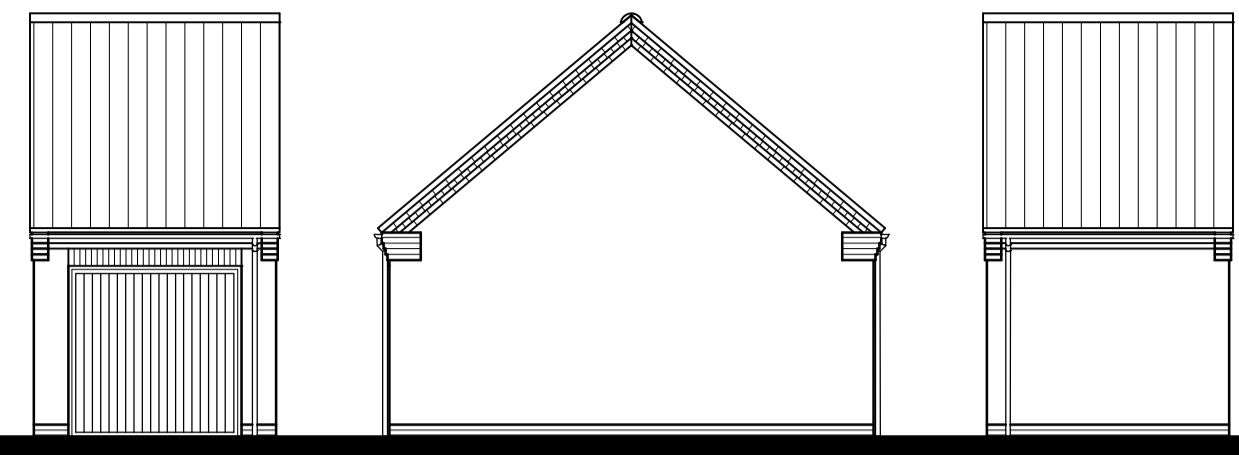
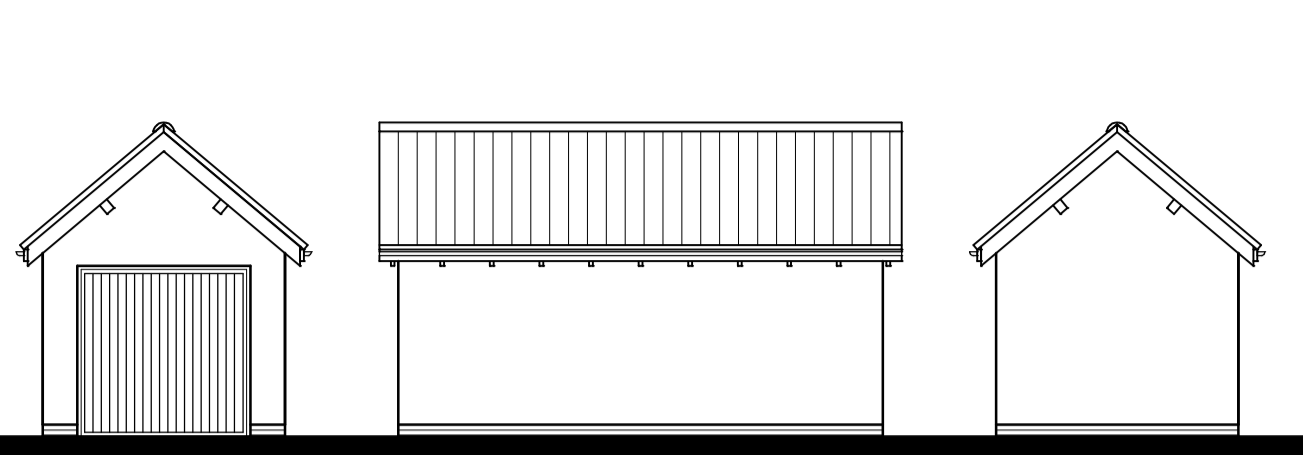


SINGLE GARAGE - VILLAGE CENTRE & CORE HOUSING EAST CHARACTER AREA

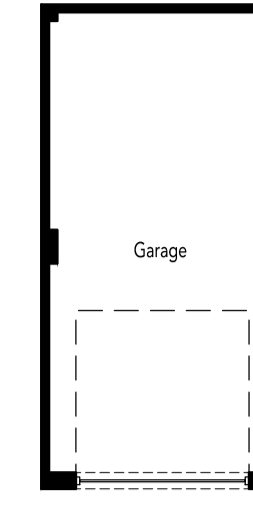


FRONT ELEVATION SIDE ELEVATION REAR ELEVATION

SINGLE GARAGE - RURAL EDGE CHARACTER AREA

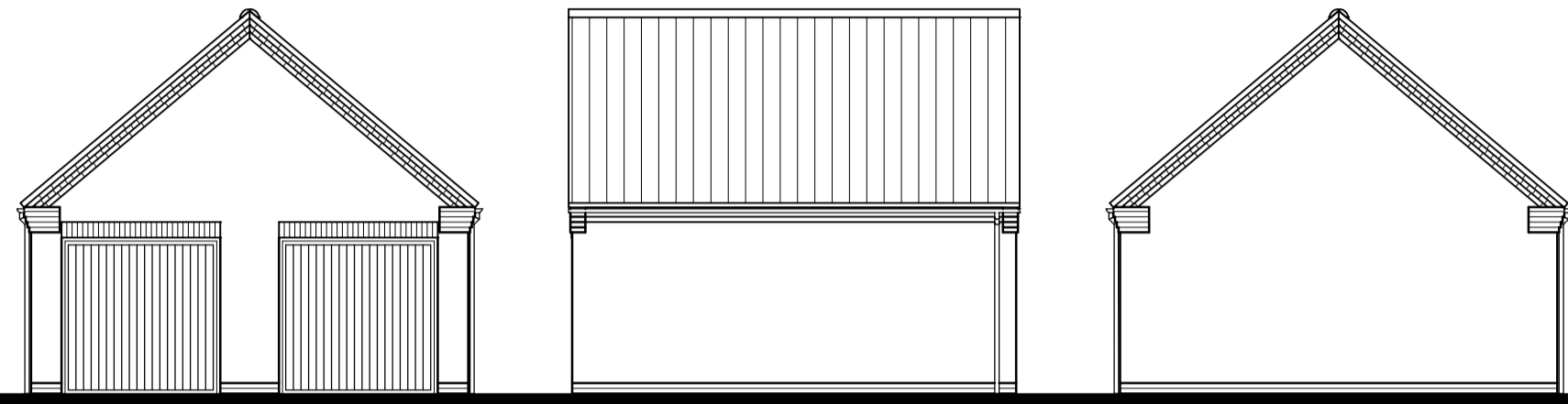


FRONT ELEVATION SIDE ELEVATION REAR ELEVATION

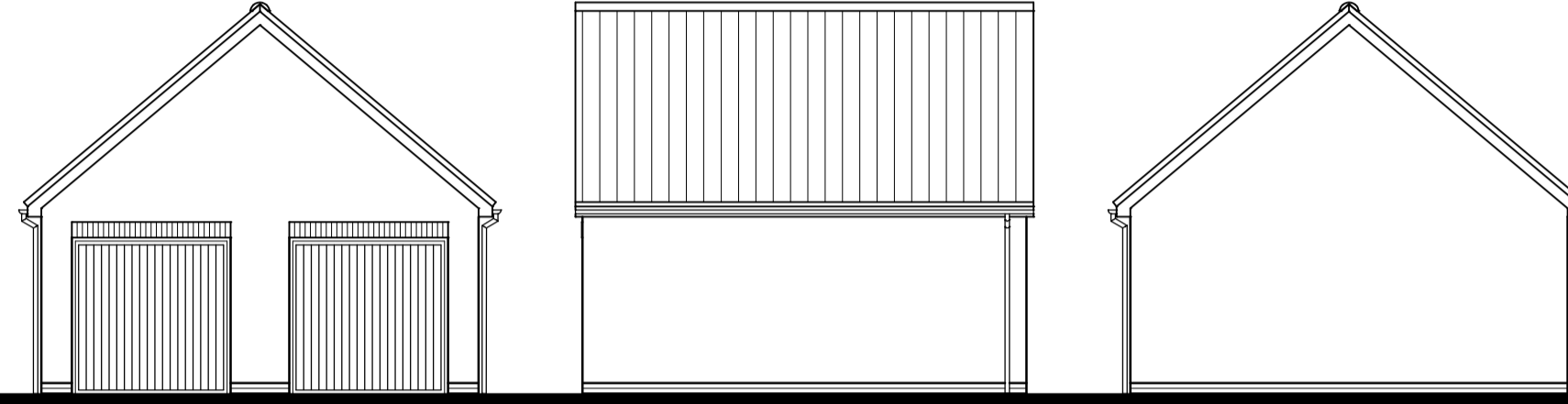


PLAN

DOUBLE GARAGE - VILLAGE CENTRE & CORE HOUSING EAST CHARACTER AREA

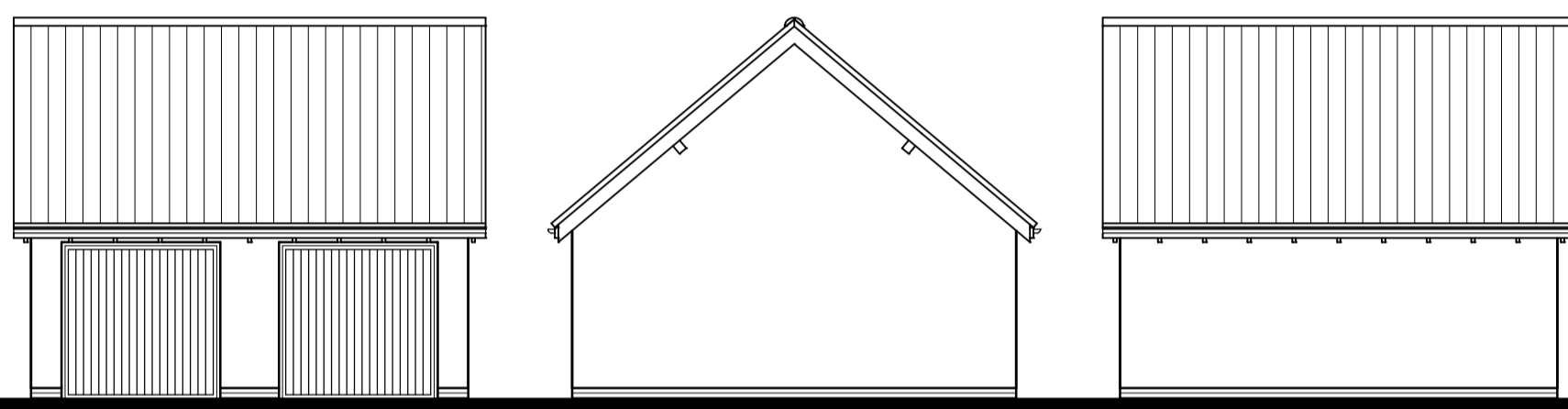


FRONT ELEVATION SIDE ELEVATION REAR ELEVATION

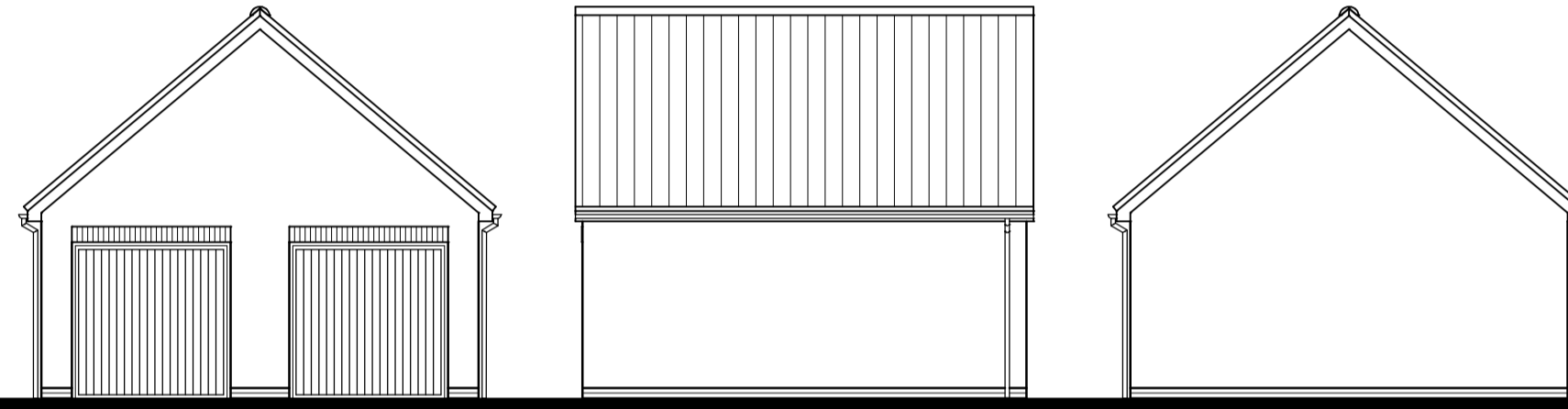


FRONT ELEVATION SIDE ELEVATION REAR ELEVATION

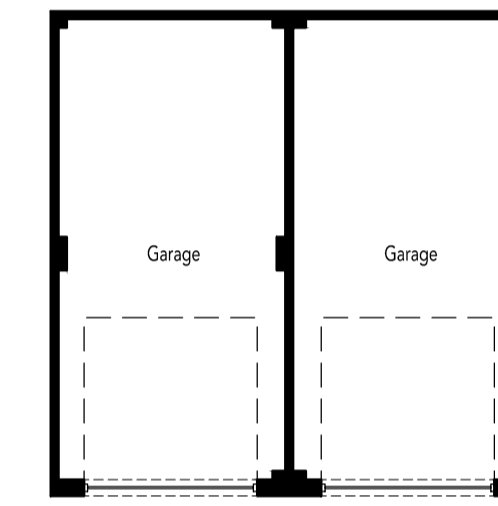
DOUBLE GARAGE - RURAL EDGE



FRONT ELEVATION SIDE ELEVATION REAR ELEVATION

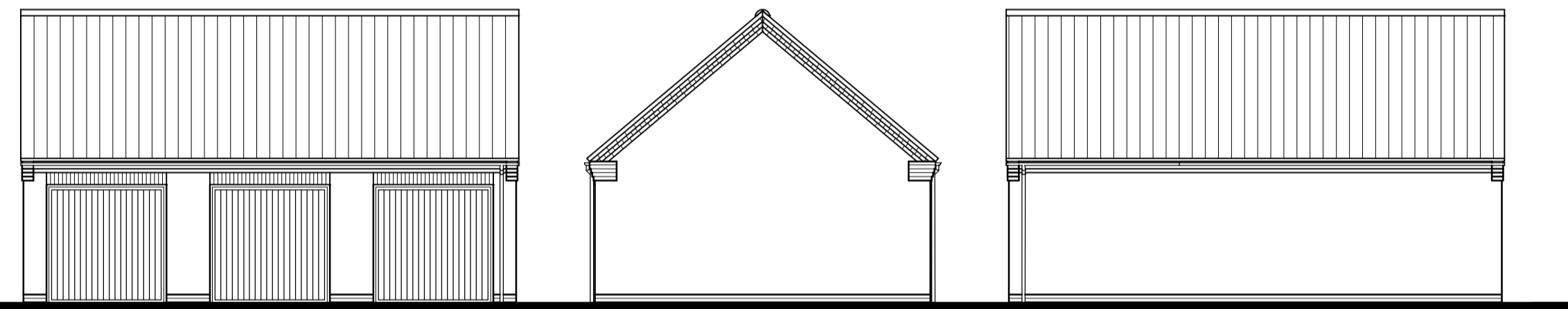


FRONT ELEVATION SIDE ELEVATION REAR ELEVATION

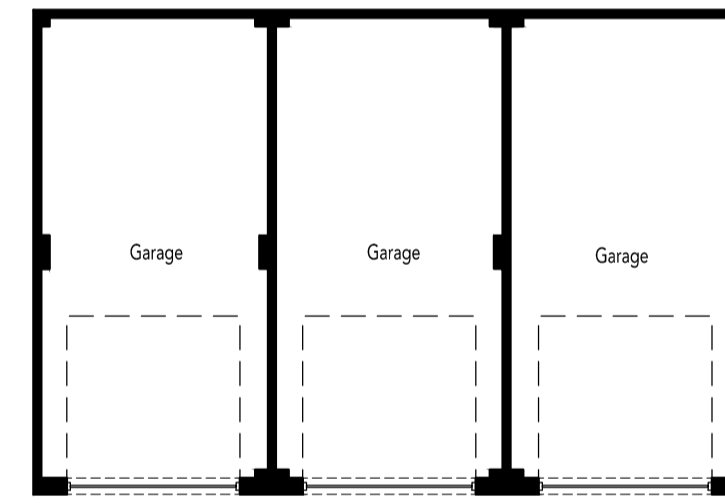


PLAN

TRIPLE GARAGE - VILLAGE CENTRE & CORE HOUSING EAST CHARACTER AREA

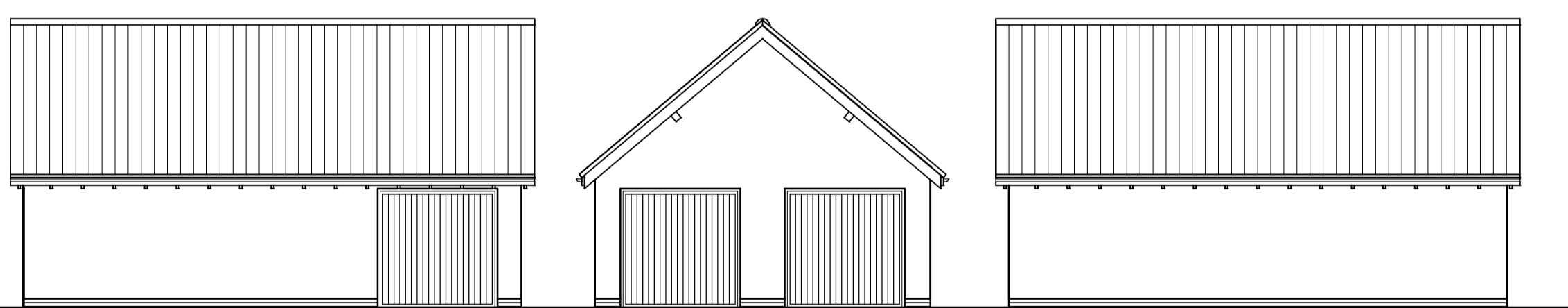


FRONT ELEVATION SIDE ELEVATION REAR ELEVATION

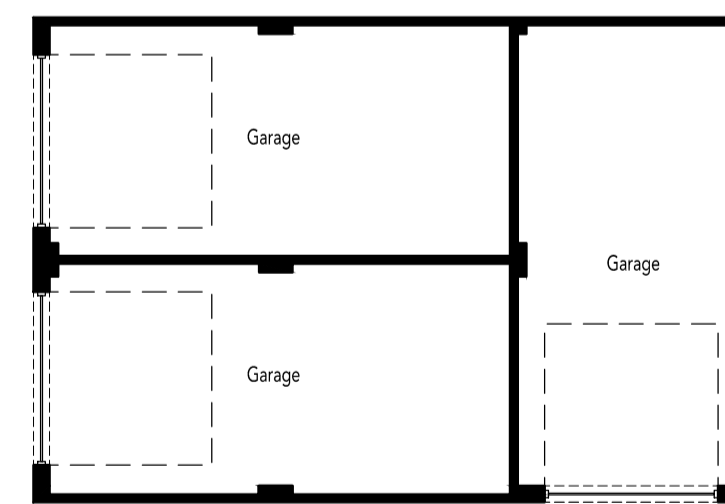


PLAN

TRIPLE GARAGE - RURAL EDGE CHARACTER AREA

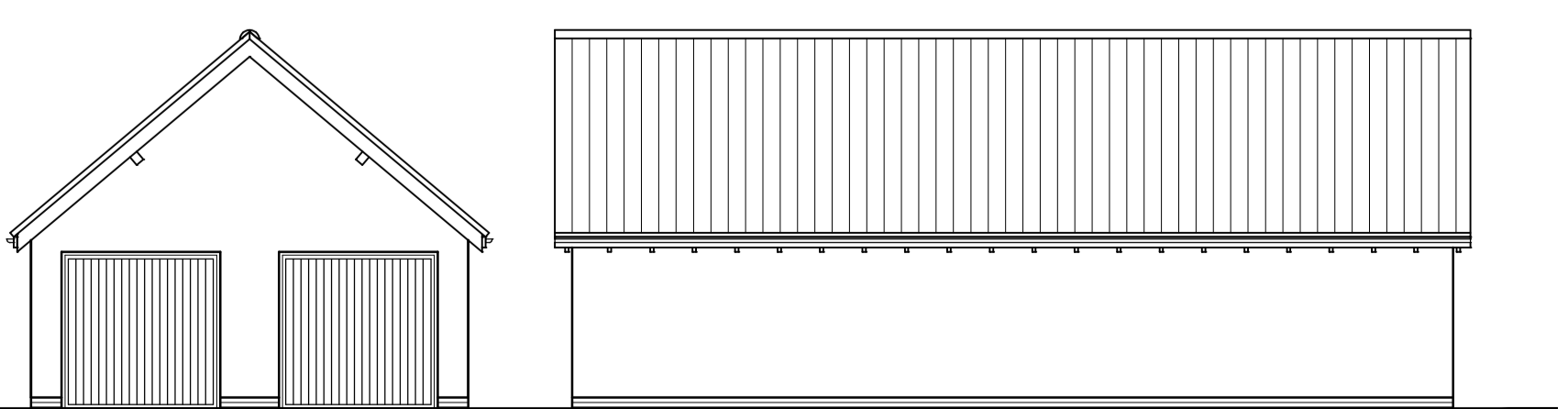


FRONT ELEVATION SIDE ELEVATION REAR ELEVATION

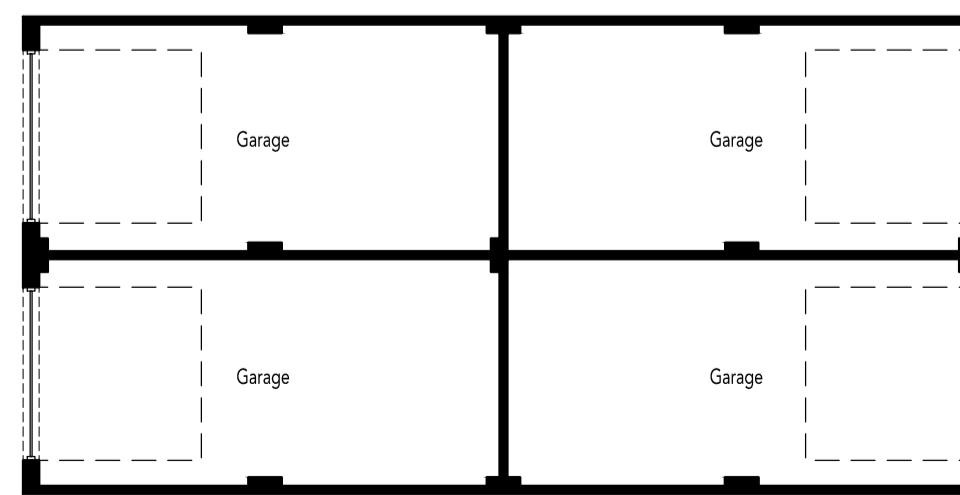


PLAN

QUADRUPLE GARAGE - RURAL EDGE CHARACTER AREA



FRONT ELEVATION SIDE ELEVATION



PLAN



REVISIONS:

N.B. For facing & Roofing Materials please refer to the Materials Layout Dwg. No. 0521-108.
For personnel door locations please refer to the External Works Layout Dwg. No. 0521-104.