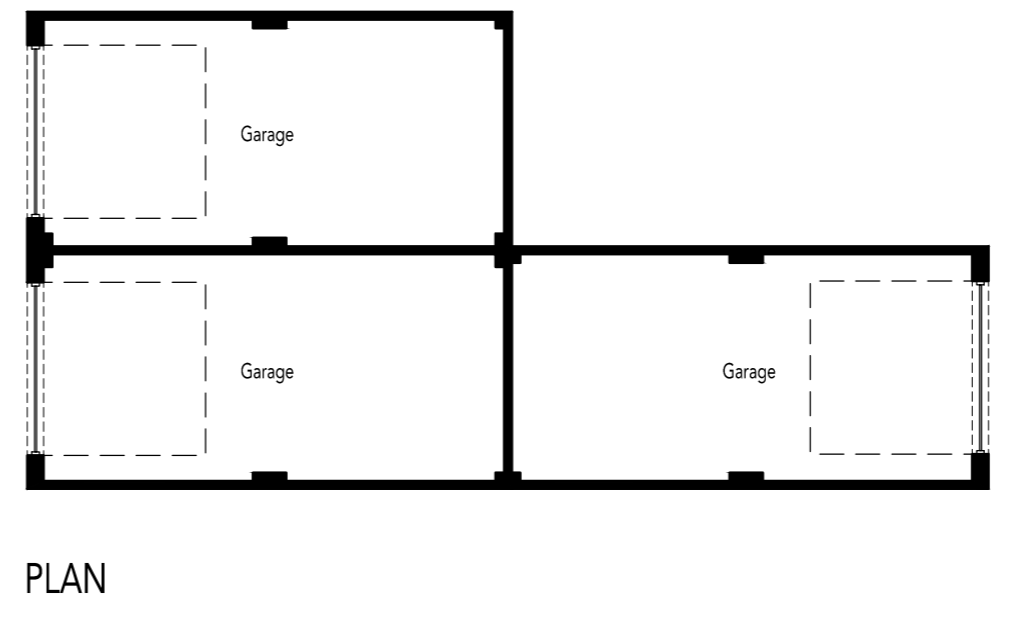
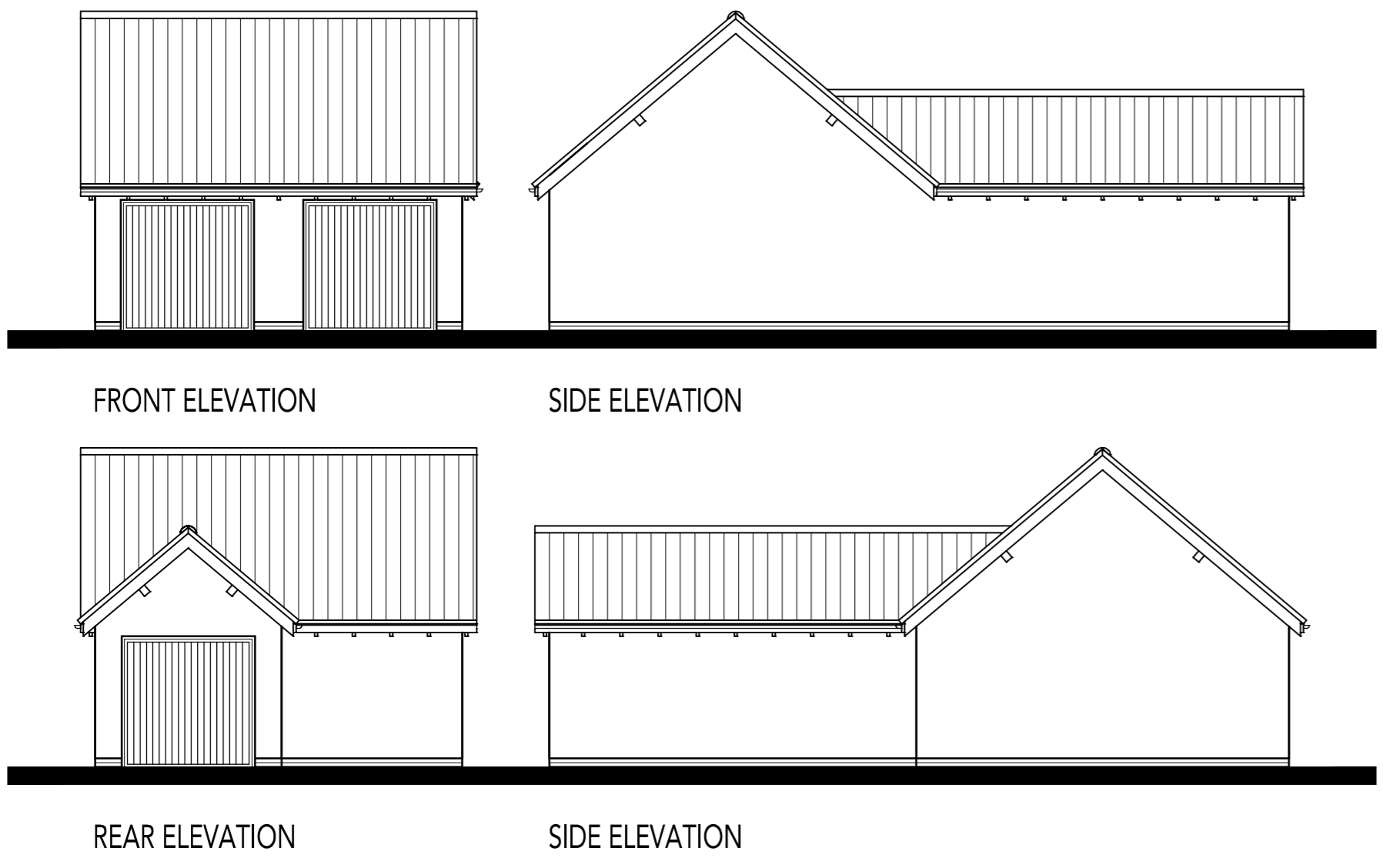


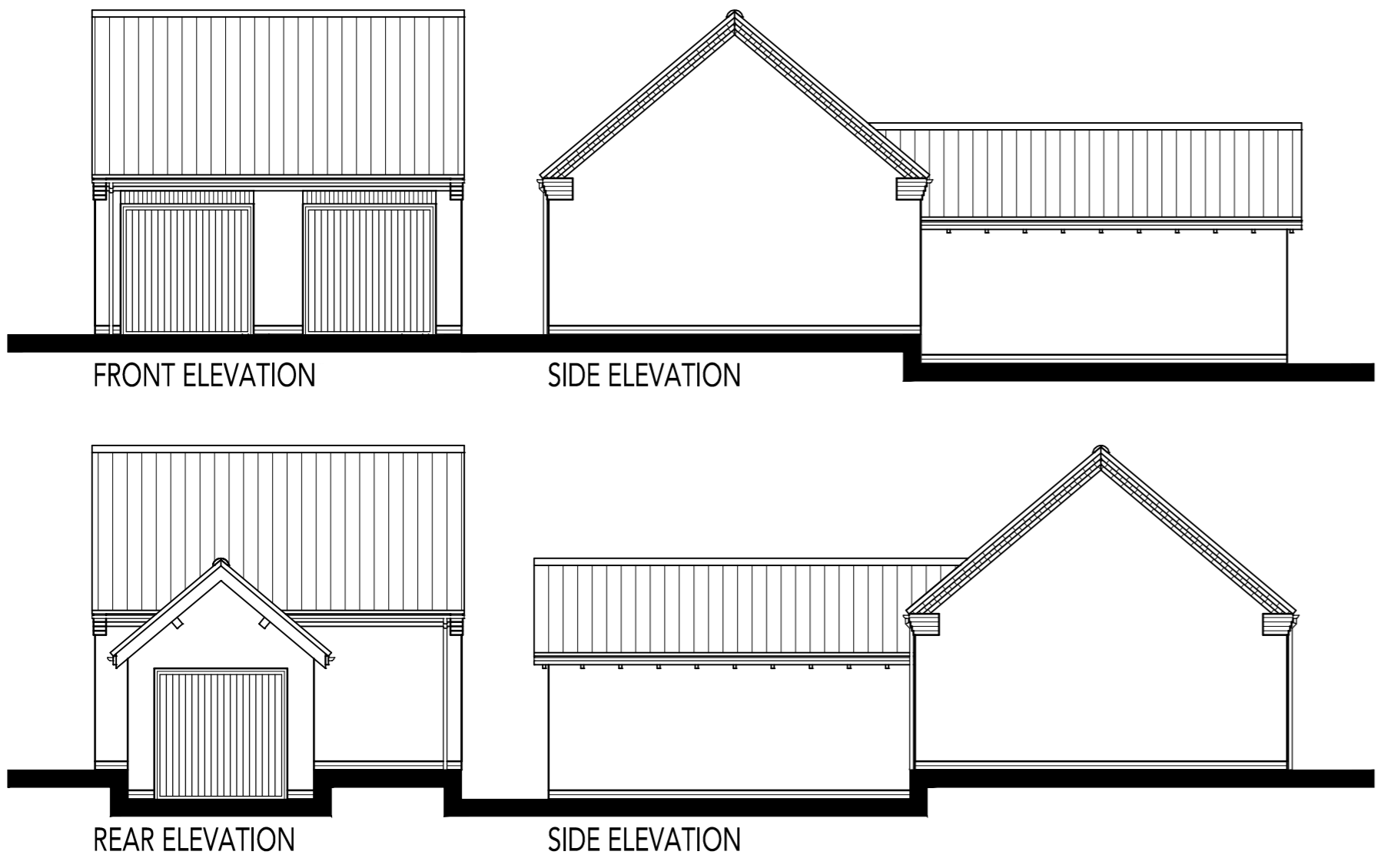


REVISIONS:

TRIPLE GARAGE - RURAL EDGE CHARACTER AREA



TRIPLE GARAGE - VILLAGE CENTRE, CORE HOUSING EAST & RURAL EDGE CHARACTER AREA



N.B. For facing & Roofing Materials please refer to the Materials Layout Drg. No. 0521-108.
For personnel door locations please refer to the External Works Layout Drg. No. 0521-104.