

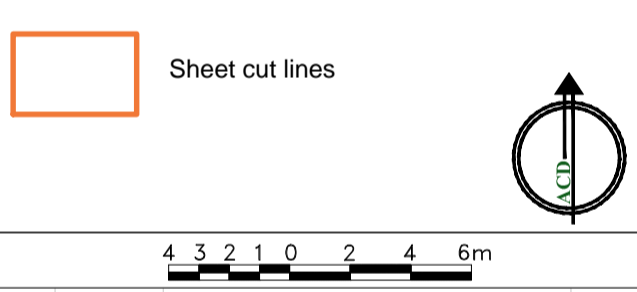


FOR PLANT SCHEDULE SEE SHEET 4

SPECIFICATION
 Forestry Commission Practice note 8.
 All native species should be of local stock. Native trees and shrubs certified as British Native plant stock.
 All planting stock should comply with the Horticultural Trade Association National Plant Specification.
 All planting preparation, handling, planting & maintenance should be in accordance with CPSE Code for Handling and Establishing plants.
 All trees and shrubs to comply with BS 4043:1989 and BS 4428:1989.
 All works generally, to comply with the written Soft Landscape Specification.
 Topsoil incorporated into planting beds to be gently mounded towards the centre of each bed to allow for settlement.
 On completion of planting the whole area of the shrub bed shall be mulched with 75mm consolidated thickness of medium textured decorative grade natural pine bark having first been prepared in accordance with the specification.
 Free standing hedges shall have a 3 strand galvanised wire and tannalised softwood timber post fence, to BS 1722 Part 3:2000, erected along a line between the two rows of hedge plants.
 All existing trees and hedges to be protected in accordance with BS5837:2012 for the duration of the construction period.

NOTE: DO NOT SCALE FROM DRAWING

- Legend**
- Site Boundary
 - Existing trees to be retained and protected during construction
 - Proposed tree planting within soft landscape. See tree pit detail on sheet 4.
 - Proposed climbing plants to be trained up adjacent wall/fence/pergola with galvanised wires and hook set 250mm apart with support canes removed prior to planting
 - Proposed single species hedge to be planted in a double staggered row 300mm apart and at 500mm centres in each row. To be maintained at 1m height
 - Proposed mixed native hedge planting to be planted in a double staggered row 300mm apart and at 500mm centres in each row. To be maintained at 1.8m height adjacent to site boundaries
 - Proposed shrub planting to receive 75mm bark mulch after planting operations
 - Proposed decorative mix shrub planting to be planted in groups of 5-7no. of each specie and as above
 - Proposed grass areas to receive good quality amenity grass turves laid in line with good horticultural practices
 - Sheet cut lines



Rev	Date	Details	Drawn
G	16.06.2016	Layout Changes	JNT
F	03.08.2015	Layout changes/logo amended	RC
E	26.11.2013	Changes to trees	HG
D	22.03.2013	Layout changes	JS
C	15.03.2013	Adult bin store hand standing	JS
B	08.03.2013	Layout changes and LPA comments	JS
A	05.12.2012	Amended in line with layout changes	CM

ACD ENVIRONMENTAL
 Ecology
 Archaeology
 Arboriculture
 Landscape Architecture

ACD at these offices:
 Rodbourne Rail Business Centre, Grange Lane,
 Malmesbury, SN16 0ES
 Tel: 01666 825646

Courtyard House, Mill Lane, Godalming, GU7 1EY
 Tel: 01483 425714

Suite 6, Crescent House, Yonge Close, Eastleigh, SO50 9SX
 Tel: 02382 026 300
 email: mail@acdov.co.uk
 www.acdenvironmental.co.uk



scheme: Cotefield Farm, Bodicote.
 client: CALA Homes
 drawing: Landscape Proposals
 date: Nov '12
 scale: 1:250@A1
 drawing no: CALA18397-11F
 Sheet 3 of 4
 drawn: HG checked: JS

Copyright of ACD Environmental Ltd. All rights described in Chapter IV of the Copyright, Designs and Patents Act 1988 have been generally asserted. 2011. Copyright of this plan remains with ACD until all fees have been paid in full.

FOR PLAY AREA PROPOSALS SEE ACD DRG. BAN18397-20

FOR PLAY AREA PROPOSALS SEE ACD DRG. N18397-20