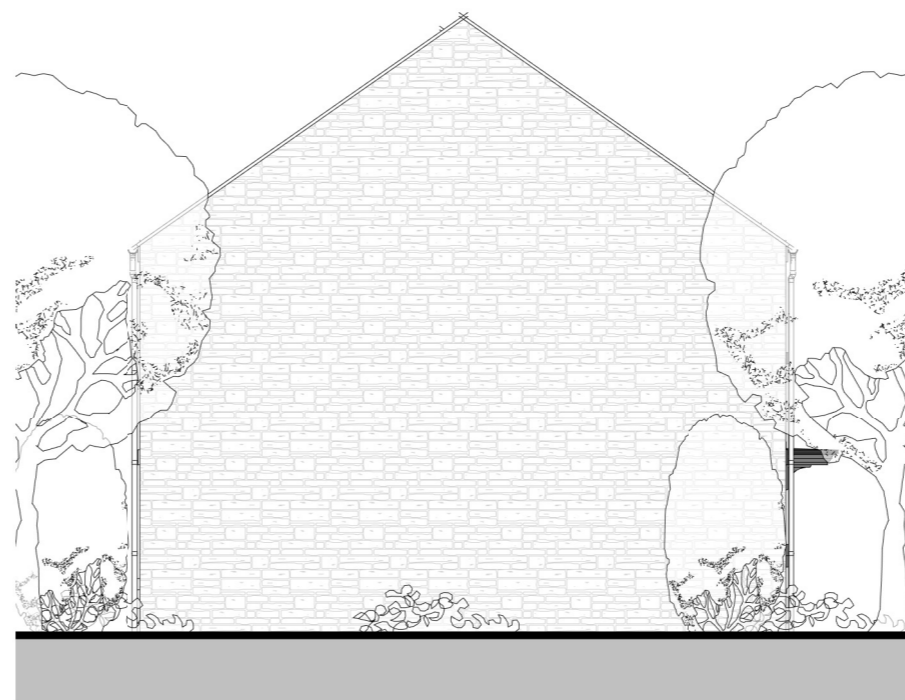




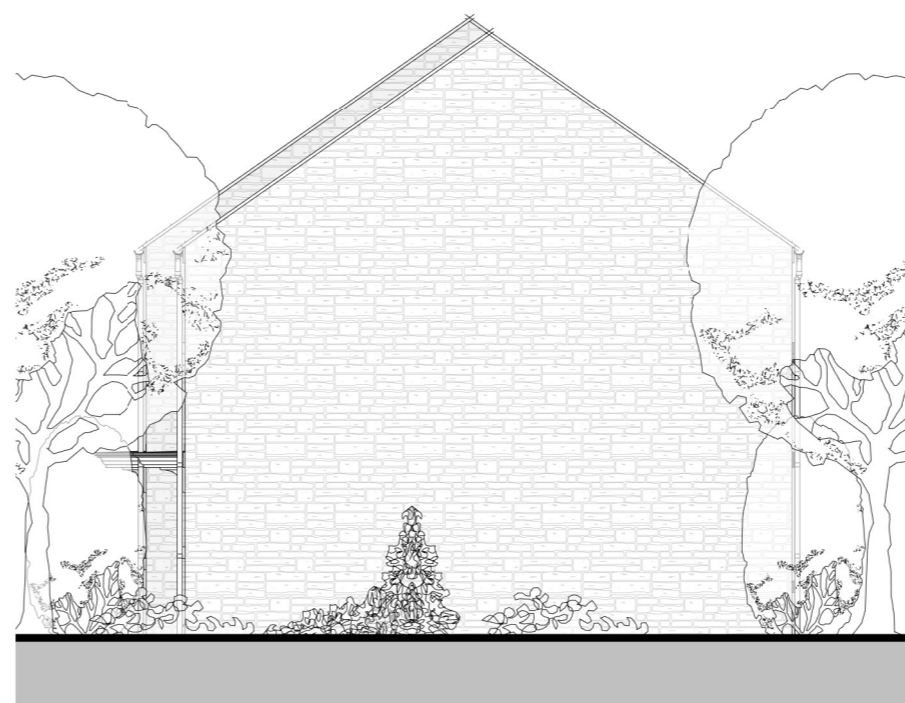
FRONT



SIDE LEFT



REAR



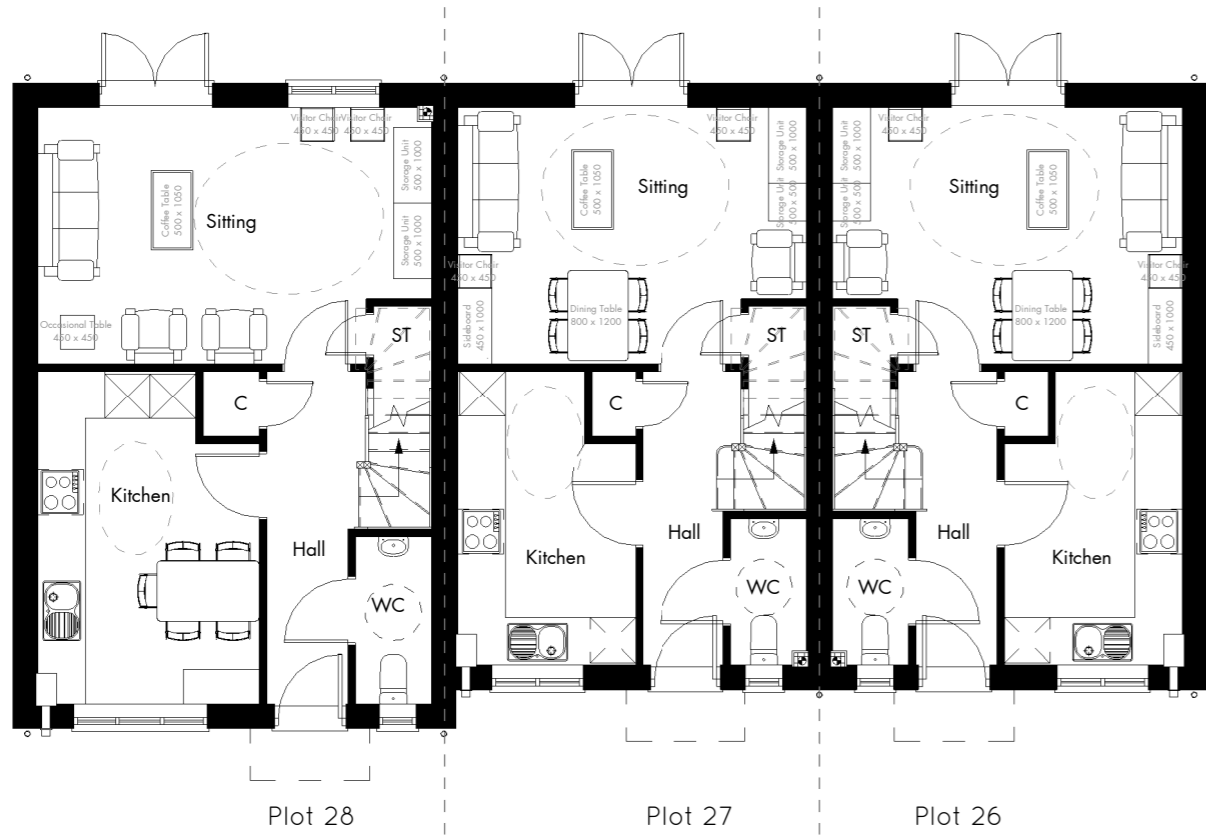
SIDE RIGHT

Plot 26 & 27
2 Bed - 4 Person - 2 Storey
G = 372 Sqft
F = 372 Sqft
Gross Internal = 744 Sqft

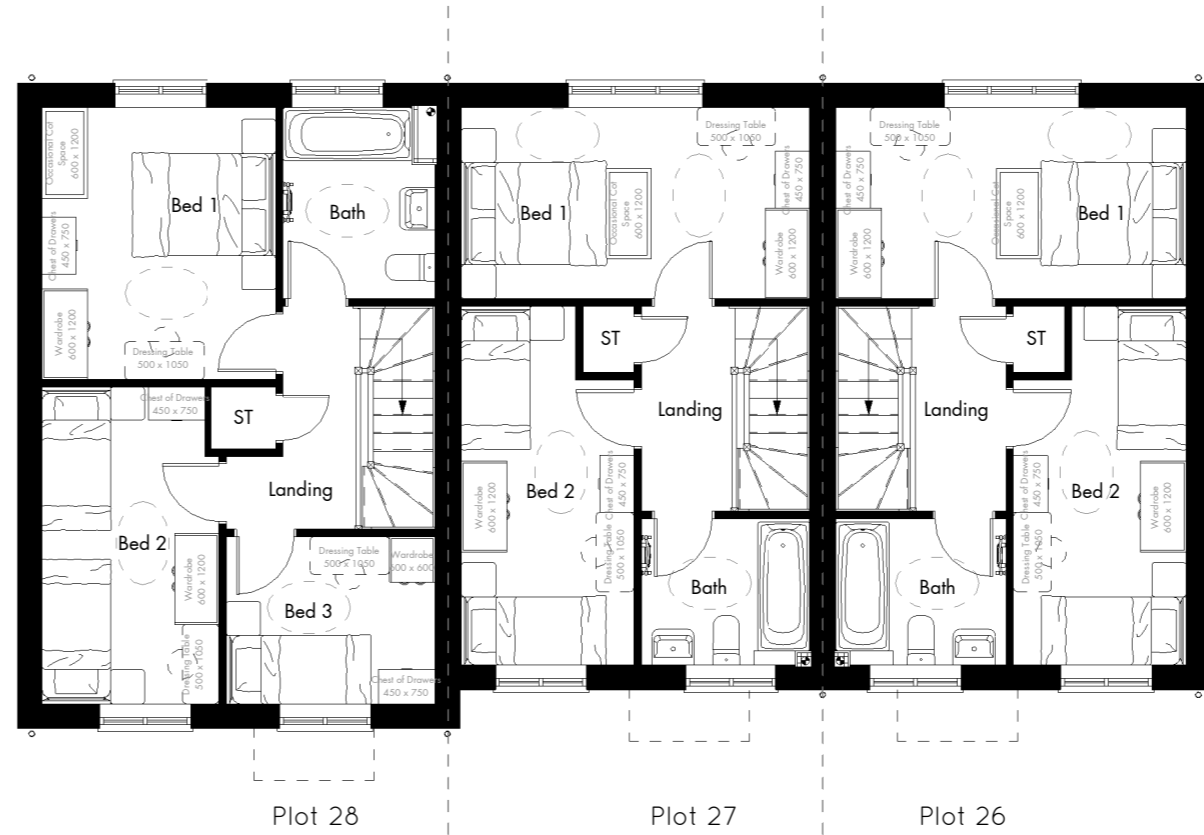
Plot 28
3 Bed - 5 Person - 2 Storey
G = 449 Sqft
F = 449 Sqft
Gross Internal = 898 Sqft

No.	DATE	DESCRIPTION


CALA GROUP LIMITED
Riverside House, Hallspar Lane, Woolburn Green
High Wycombe, Buckinghamshire, HP10 0TJ
Tel: 01628 536200 Fax: 01628 536201
DX: 123610 Woolburn Green Email: info@cala.co.uk



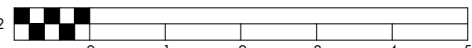
GROUND



FIRST

Fewcott Road, Fritwell

Plot 26-27-28 - Plans & Elevations

1 : 100 @ A2 

Specification Level - A	
Scale (@ A2)	Dwg No.
1 : 100	00217 - PL.24
Date	Rev
01.08.16	
Drawn	
T. McEwen	