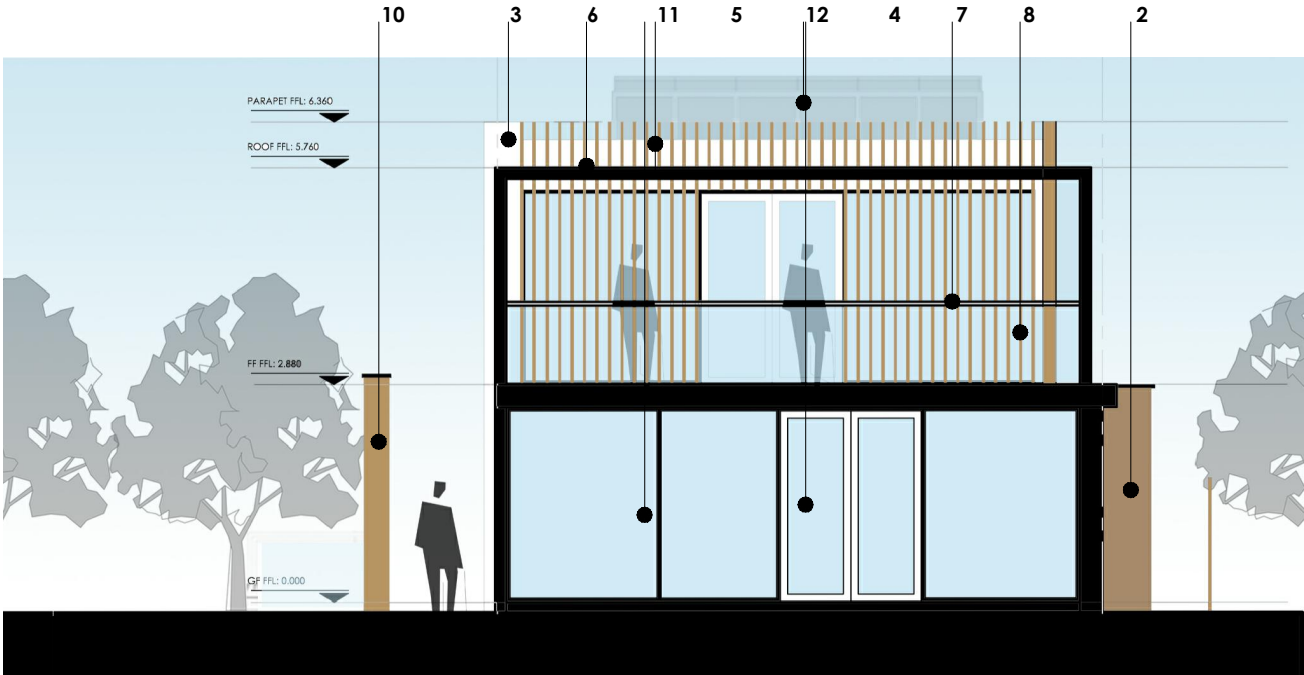
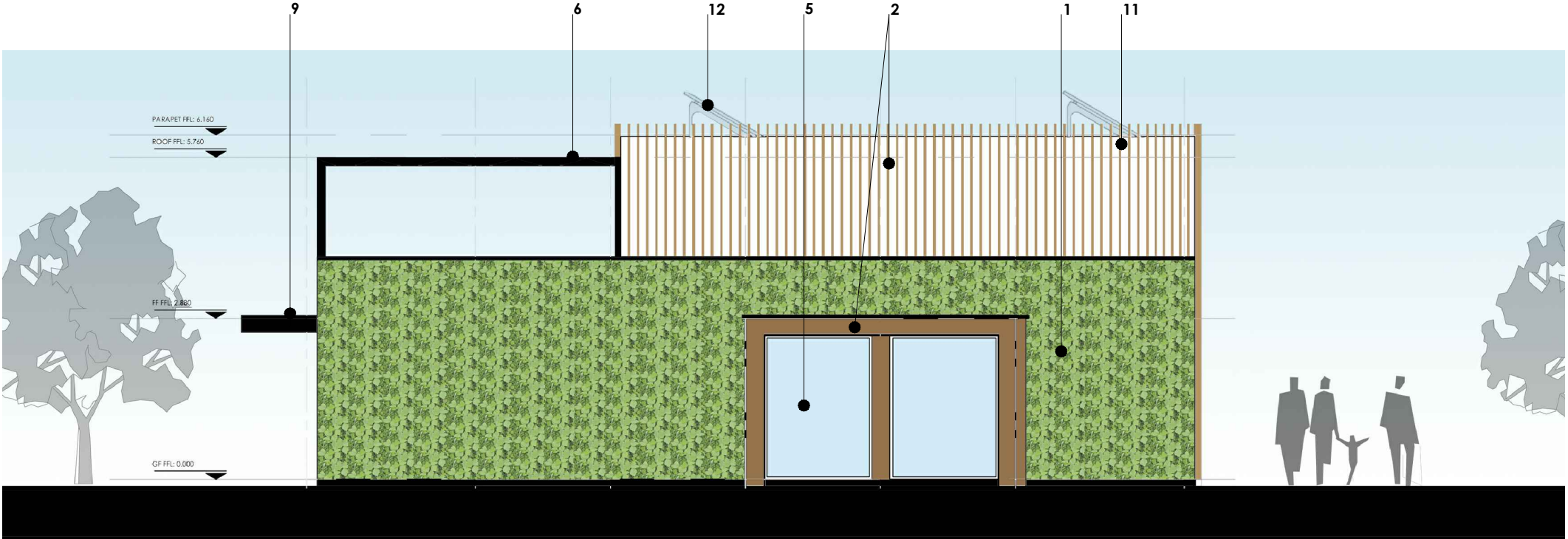


SOUTH ELEVATION



NORTH ELEVATION



WEST ELEVATION

50mm on original sheet

revisions				
no.	description	date	initial	check
P01	INITIAL ISSUE FOR PLANNING	07.08.14	NLC	NLC
P02	AMENDED IN LINE WITH REVISED PLANS; REISSUED FOR PLANNING	15.08.14	NLC	NLC
P03	SOLAR PV PANELS ADDED TO ROOF; BALUSTRADE ADDED AROUND REFLECTION POOL; WINDOW CUT OUTS IN TIMBER CLADDING AND SIGN ADDED TO SOUTH ELEVATION; REISSUED FOR PLANNING	20.08.14	NLC	NLC
P04	SCALING OF ELEVATIONS CORRECTED; REISSUED FOR PLANNING	17.09.14	NLC	NLC

- KEY TO MATERIALS:**
- 1. LIVING WALL
 - 2. KINGSPAN KS1000 FL CLADDING
 - 3. DUPONT CORIAN CLADDING
 - 4. ALUMINIUM PPC FULLY GLAZED DOUBLE WING DOOR AUTO OPENING
 - 5. ALUMINIUM PPC FULLY GLAZED WINDOW ELEMENTS
 - 6. RETRACTABLE ROOF FABRIC CANOPY AND SUPPORT FRAMEWORK
 - 7. BALUSTRADE
 - 8. GLASS INFILL PANELS
 - 9. BRISE SOLEIL
 - 10. TIMBER CLAD SIGN
 - 11. VERTICAL TIMBER CLADDING - SCANDINAVIAN REDWOOD
 - 12. SOLAR PV PANELS

notes

DO NOT SCALE FROM THIS DRAWING
DRAWING SUBJECT TO COPYRIGHT ACT

NTC
designs

NTC designs Ltd.
3 Hastings Close
Stevenage
SG1 2JG
p: 07748610789
e: ntcdesignsLtd@gmail.com

client
OCTINK

project
A2D _ BICESTER ECOTOWN

drawing
PROPOSED ELEVATIONS

scale	1:100 @ A3	date drawn	07.08.14	drawn by	NLC
1 check date	07.08.14	checked by	NLC	2 check date	07.08.14
				checked by	NLC

drawing no.
BET_A_0004

revision
P04

