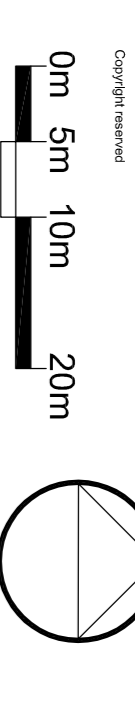
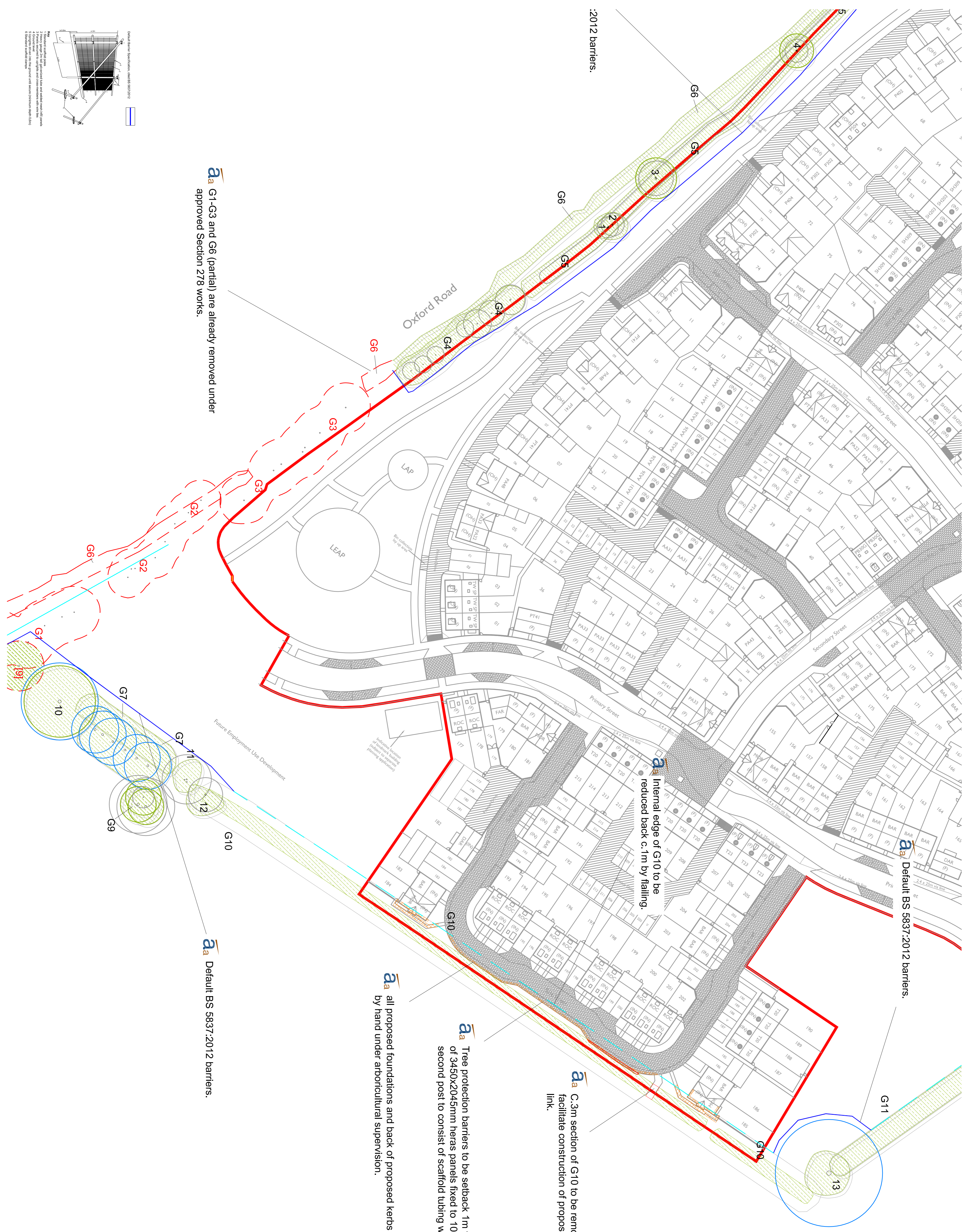


NOTES:
 1. Planning Survey was with permission of The Controller of Her Majesty's Stationery Office, London, Copyright © Crown Copyright, 2013. All Rights Reserved. Ordnance Survey, 2013. All Rights Reserved. OS is a registered trademark of Ordnance Survey.
 The original of this drawing was produced in color. Annotations were added and in black ink.
 All dimensions to be taken from this drawing.
 Copyright reserved



0m 5m 10m 20m

- KEY:
- Site Boundary
 - Tree Numbers
 - Tree Canopies
 - Category 'U' Trees
 - Category 'A' RPA
 - Category 'B' RPA
 - Category 'C' RPA
 - Trees to be Removed
 - Tree Protection Fencing
 - Secondary Tree Protection Fencing
 - Manual Excavation



a G1-G3 and G6 (partial) are already removed under approved Section 278 works.

a Internal edge of G10 to be reduced back c.1m by falling.

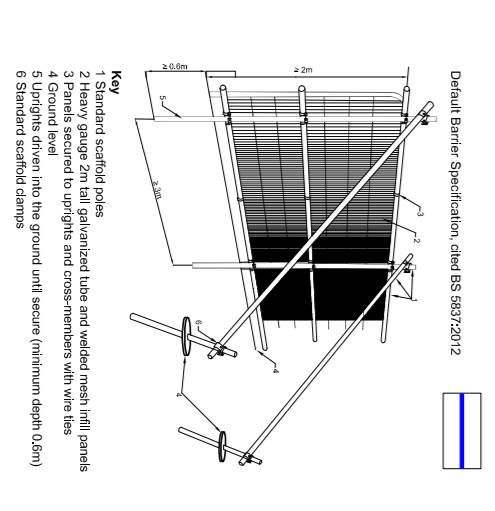
a Default BS 5837:2012 barriers.

a Default BS 5837:2012 barriers.

a all proposed foundations and back of proposed kerbs west of G10 be excavated by hand under arboricultural supervision.

a Tree protection barriers to be setback 1m from post-falled canopy (Barrier type of 3450x2045mm heras panels fixed to 100 x 100mm timber posts for full height second post to consist of scaffold tubing with pinned rubber anchors).

a C.3m section of G10 to be removed to facilitate construction of proposed pedestrian link.



aspect arboriculture

TITLE
 Longford Park, Banbury
 Tree Protection Plan (Phase 1)

CLIENT
 Taylor Wimpey, Barratt Homes & Bovis Homes

SCALE 1:500 @ A1

DATE JUNE 2013

DRAWN JIB

REVISION H

DRAWING NUMBER 8667 TPP 01 South

REV.	DATE	NOTE	Drawn	Check