

Ref. 17  
Exterior wall recessed lights along route.

Ref. IDST  
Interior Designer selected bedside table light - local switch.

Ref. 7  
Concealed linear LED lighting within joinery. Controlled via door contact switch. Details to be developed with architect and final furniture specification.

Ref. 16  
Concealed linear LED lighting to rear of bench provides up light.

Ref. IDSW  
Interior Designer selected wall light adjacent to external entrance.

Ref. 7  
Concealed linear LED lighting beneath wall mounted cupboards.

Ref. 6  
Concealed linear LED uplight in timber detail

Ref. IDST  
Interior Designer selected bedside table light - local switch.

Ref. IDSW  
Interior designer specified wall lights.

Ref. IDST  
Interior Designer selected bedside table light - local switch.

Ref. 7  
Concealed linear LED lighting within low level detail at skirting height of furniture.

Continued on RCP

Continued on RCP

Continued on RCP

External lighting switch

Ref. 7  
Concealed linear LED lighting integrating within dressing room furniture/shelving. Detail to be developed in coordination with Architect.

Indicates proposed artwork location. To be reviewed by client in coordination with Architect.

Note:  
Please refer to Hayward Smart drawings 14-062-117, 118 & 119 for quantity and approximate location of 13A sockets which supersedes the electrical socket references on this drawing

Note:  
Exterior lighting allowance to be made for development of lighting at Main Entrance gate. Allow for 2no. channels of switched lighting at the Main Entrance. All details to be confirmed.

Note:  
Exterior PIR lighting control to be specified & installed by contractor. PIR to activate lighting to external stair from canopy at First Floor. PIR to have adjustable timed operation to off. PIR to link into Rako system and recall dimmed scene. PIR to have photocell.

Note:  
Exterior lighting to appropriate trees/planting to be developed.

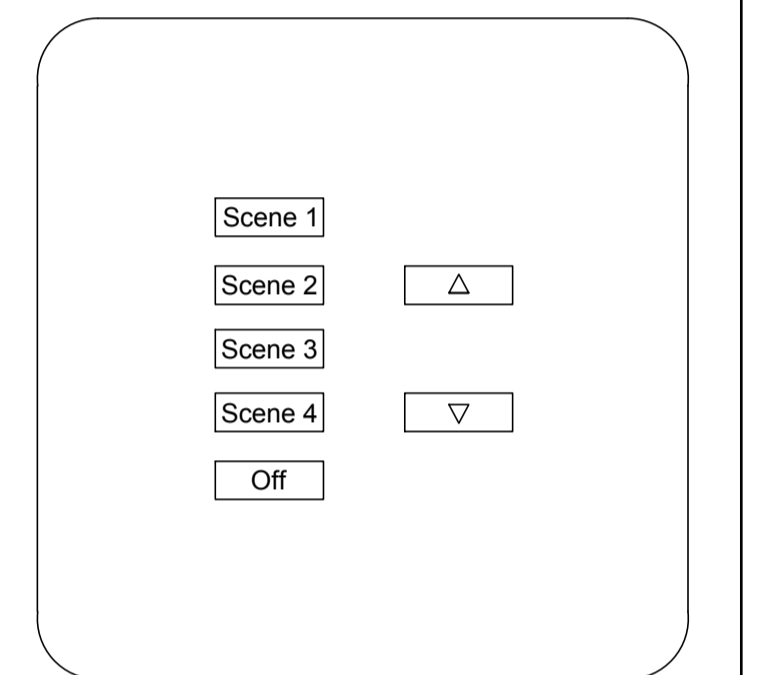
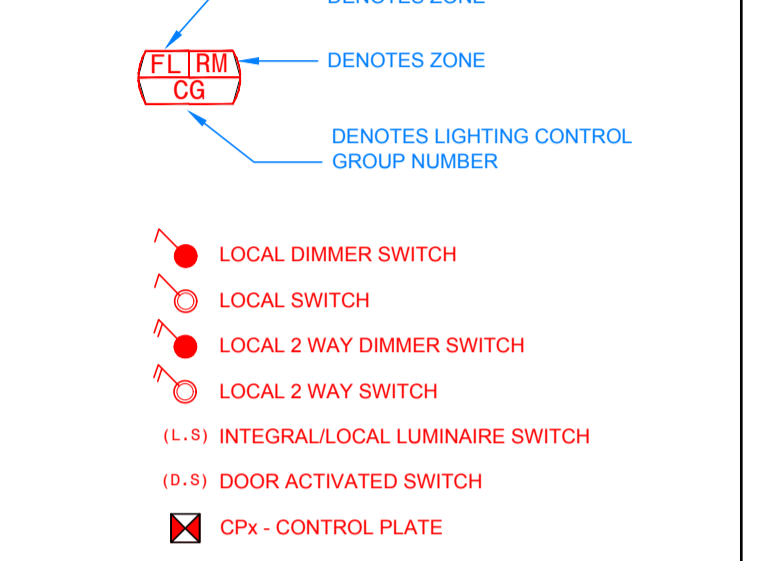
Ref. 9  
Recessed uplight to architectural structure.

Ref. 9m  
Recessed uplight in exterior paving in coordinated location centred on columns.

dpa Notes

- Do not scale this drawing. Figured dimensions must be used. Any detail or dimensional conflicts should be referred to dpa lighting consultants for clarification. Scaled dimensions should not be taken from this drawing. All dimensions to be checked on-site.
- These drawings are intended to show design intent. Refer to appropriate dpa documents for further details.
- Where appropriate refer to associated lighting detail drawings for the exact location of luminaires.
- All equipment supplied by the installing Contractor shall comply with the relevant regulations, and be capable of installation in accordance with all statutory wiring regulations. All equipment shall comply with all statutory and local authority requirements.
- Final locations of lighting control plates, lighting (5 Amp) socket outlets and dimmer racks to be co-ordinated with Interior Designer, M&E Consultant, Operator & Client. Exact locations to be agreed on-site and approved by Operator/Client.
- Installing Contractor to ensure that all drivers, transformers and control gear are compatible with the lighting control system dimmers.
- Access for maintenance and installation for all luminaire types and lighting equipment is required and should be coordinated by the contractor.

Lighting Control Key



CP01-CP15 - TYPICAL 7 BUTTON RADIO CONTROL WALL KEYPAD 4 SCENES RAISE LOWER AND OFF.

Rev	Description	Date	Drawn	Checked
F	Exterior tree lighting omitted	21/06/17	AR	ICL
E	Exterior tree lighting added	10/05/17	AR	ICL
D	Revision D	05/05/17	AR	ICL
C	Wall lights added in W.C.s	07/04/17	DS	ICL
B	Revision B	19/10/16	KF	ICL
A	Revision A	05/10/16	AR	ICL
-	First Issue	29/09/16	RN	ICL

**dpa** lighting consultants  
Old Church Studios  
Cilton, Didlington  
Oxfordshire  
OX15 0PE, U.K.  
Tel: +44 (0) 1869 337412  
Fax: +44 (0) 1869 338991  
dpa@dpa-lighting.com  
www.dpalighting.com

Client:  
**Jan and Diana Thompson**

Project:  
**The Long House, Sibford Ferris**

Drawing Title:  
**Ground Floor  
Low Level  
Lighting Layout**

Drawing No:  
**C6937-GF-LL-01**

Revision: **F** Scale: **1:50@A1** Base Drawings: **14-062-GA Ground Floor Plan-160819**