

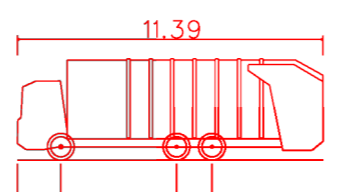
THERE ARE NO EXCEPTIONAL RISKS ASSOCIATED WITH THESE WORKS. REFER TO THE DESIGNERS RISK ASSESSMENT FOR THE FULL ASSESSMENT OF RISKS.

1. CONTRACTORS MUST CHECK ALL DIMENSIONS ON SITE. ONLY FIGURED DIMENSIONS ARE TO BE WORKED FROM. DISCREPANCIES MUST BE REPORTED TO THE ARCHITECT OR ENGINEER BEFORE PROCEEDING. © THIS DRAWING IS COPYRIGHT.

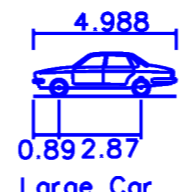
2. REPRODUCED FROM OS SITEMAP © BY PERMISSION OF ORDNANCE SURVEY® ON BEHALF OF THE CONTROLLER OF HER MAJESTY'S STATIONERY OFFICE. © CROWN COPYRIGHT 2008. ALL RIGHTS RESERVED. LICENCE NUMBER 100007126.

3. UNTIL TECHNICAL APPROVAL HAS BEEN OBTAINED FROM THE RELEVANT AUTHORITIES, ALL DRAWINGS ARE ISSUED AS PRELIMINARY AND NOT FOR CONSTRUCTION. SHOULD THE CONTRACTOR COMMENCE SITE WORK PRIOR TO APPROVAL BEING GIVEN IT IS ENTIRELY AT HIS OWN RISK.

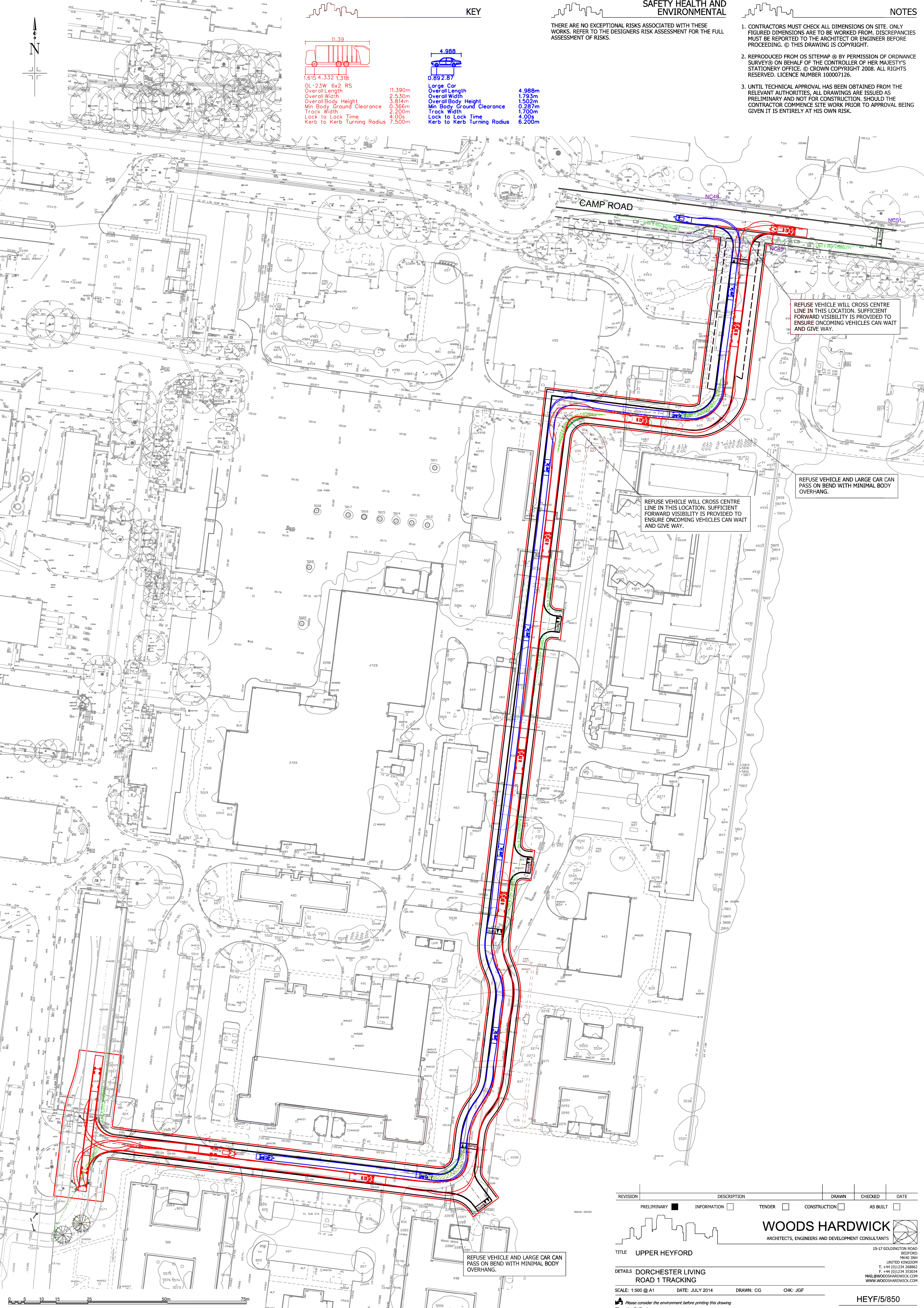
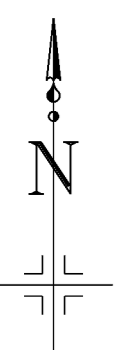
KEY



11.39
 2.33 1.318
 OL-23W 6x2 RS
 Overall Length 11.390m
 Overall Width 2.530m
 Overall Body Height 3.814m
 Min Body Ground Clearance 0.366m
 Track Width 2.200m
 Lock to Lock Time 4.00s
 Kerb to Kerb Turning Radius 7.500m



4.988
 1.793 1.502
 Large Car
 Overall Length 4.988m
 Overall Width 1.793m
 Overall Body Height 1.502m
 Min Body Ground Clearance 0.287m
 Track Width 1.700m
 Lock to Lock Time 4.00s
 Kerb to Kerb Turning Radius 6.200m



CAMP ROAD

REFUSE VEHICLE WILL CROSS CENTRE LINE IN THIS LOCATION. SUFFICIENT FORWARD VISIBILITY IS PROVIDED TO ENSURE ONCOMING VEHICLES CAN WAIT AND GIVE WAY.

REFUSE VEHICLE WILL CROSS CENTRE LINE IN THIS LOCATION. SUFFICIENT FORWARD VISIBILITY IS PROVIDED TO ENSURE ONCOMING VEHICLES CAN WAIT AND GIVE WAY.

REFUSE VEHICLE AND LARGE CAR CAN PASS ON BEND WITH MINIMAL BODY OVERHANG.

REFUSE VEHICLE AND LARGE CAR CAN PASS ON BEND WITH MINIMAL BODY OVERHANG.

REVISION	DESCRIPTION	DRAWN	CHECKED	DATE
PRELIMINARY	INFORMATION	TENDER	CONSTRUCTION	AS BUILT

WOODS HARDWICK
 ARCHITECTS, ENGINEERS AND DEVELOPMENT CONSULTANTS

TITLE: UPPER HEYFORD
 DETAILS: DORCHESTER LIVING ROAD 1 TRACKING
 SCALE: 1:500 @ A1 DATE: JULY 2014 DRAWN: CG CHK: JGF

HEYF/5/850



Please consider the environment before printing this drawing
 Filepath: F:\Engineer