

Wykham Park Farm Banbury  
CA10769

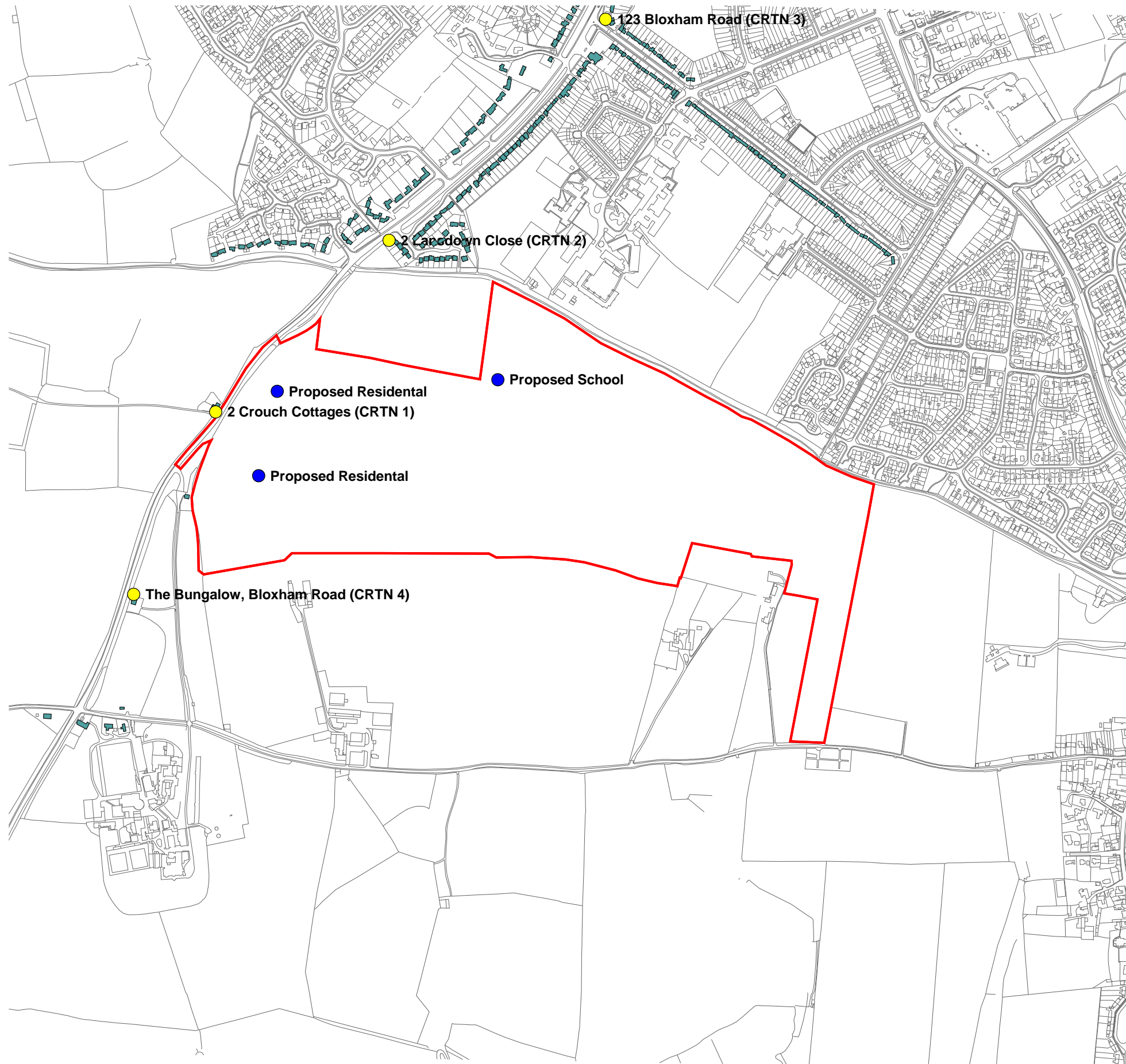
## Figure 7.2 Sensitive Receptor Plan

Drawn By: R Calvert





Checked By: R Calvert

Approved By: Mark Dawson

29/03/2016



### Signs and symbols

-  Existing Sensitive Receptors
-  Proposed Sensitive Receptors
-  Existing Buildings
-  Site Boundary



Length scale 1:8750

0 90 180 270  
m



*your earth our world*

Wardell Armstrong  
2 The Avenue, Leigh, Greater Manchester, WN7 1ES, United Kingdom  
Telephone: +44 (0)1942 260101 Facsimile: +44 (0)1942 261754 [www.wardell-armstrong.com](http://www.wardell-armstrong.com)

ENERGY AND CLIMATE CHANGE  
ENVIRONMENT AND SUSTAINABILITY  
INFRASTRUCTURE AND UTILITIES  
LAND AND PROPERTY  
MINING, QUARRYING AND MINERAL ESTATES  
WASTE RESOURCE MANAGEMENT



Wykham Park Farm Banbury  
CA10769

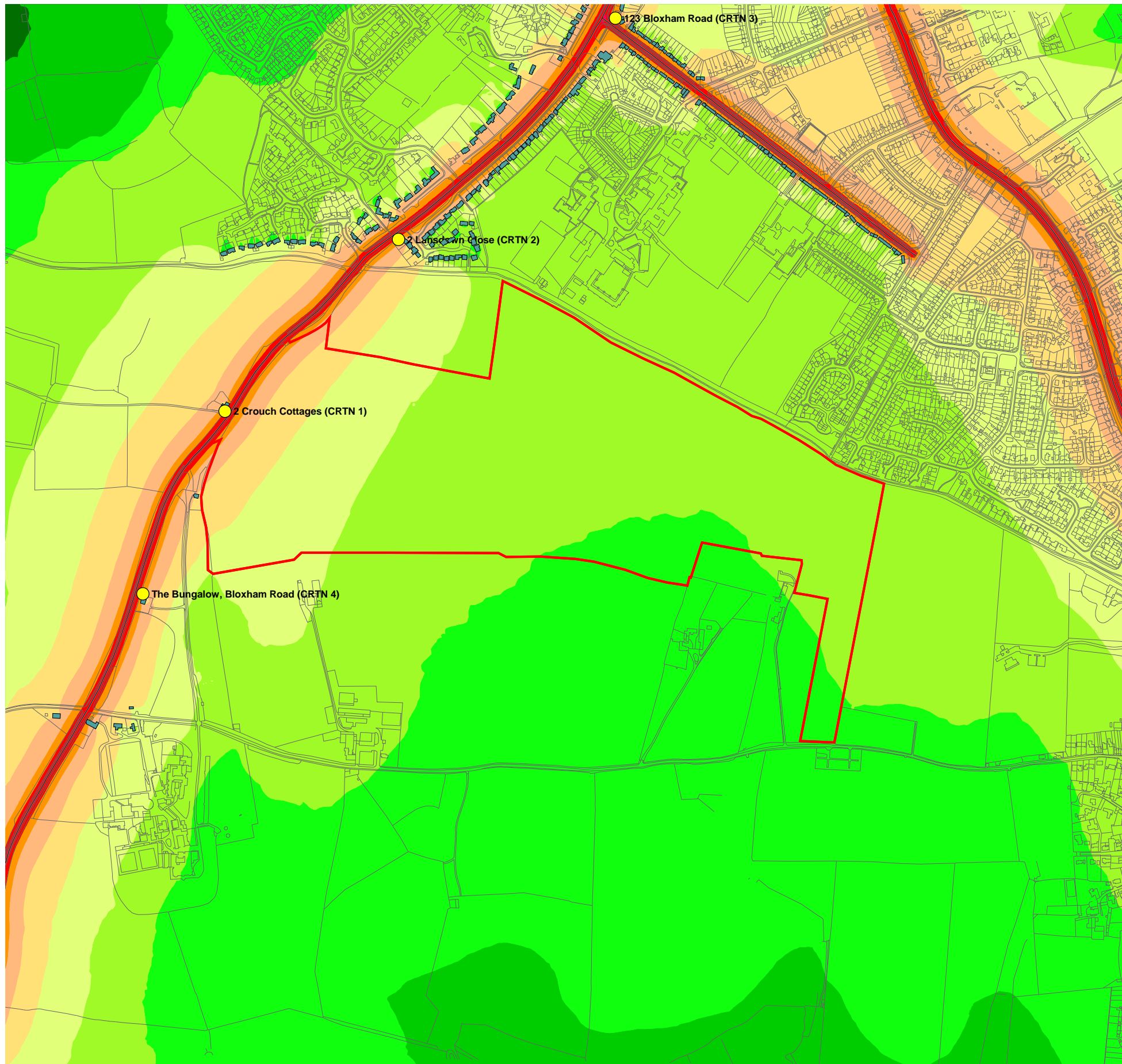
## Figure 7.3 Scenario 1: 2014 Baseline

Drawn By: R Calvert

Checked By: R Calvert

Approved By: Mark Dawson

29/03/2016



### Signs and symbols

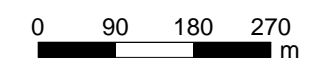
- Existing Sensitive Receptors
- Proposed Sensitive Receptors
- Existing Buildings
- Site Boundary
- Road axis
- Emission line
- Surface
- General text
- Elevation line

### Noise levels in $L_{A10}$ dB(A)

	< 35
	35 - 40
	40 - 45
	45 - 50
	50 - 55
	55 - 60
	60 - 65
	65 - 70
	70 - 75
	75 - 80
	80 - 85
	$\geq$ 85



Length scale 1:8750



ENERGY AND CLIMATE CHANGE  
ENVIRONMENT AND SUSTAINABILITY  
INFRASTRUCTURE AND UTILITIES  
LAND AND PROPERTY  
MINING, QUARRYING AND MINERAL ESTATES  
WASTE RESOURCE MANAGEMENT

Wardell Armstrong  
2 The Avenue, Leigh, Greater Manchester, WN7 1ES, United Kingdom  
Telephone: +44 (0)1942 260101 Facsimile: +44 (0)1942 261754 www.wardell-armstrong.com



Wykham Park Farm Banbury  
CA10769

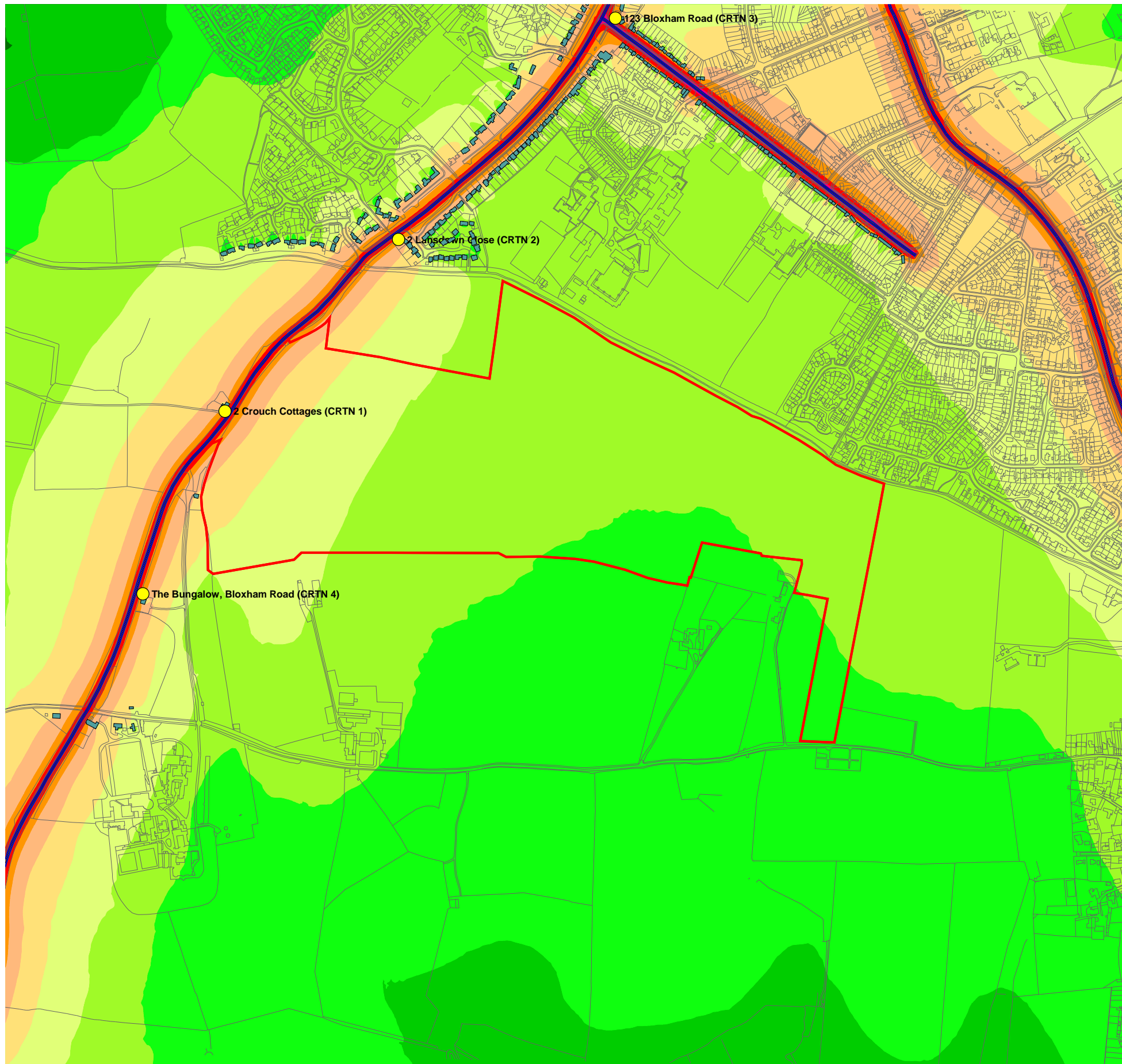
## Figure 7.4 Scenario 2: 2031 DNnoLR

Drawn By: R Calvert

Checked By: R Calvert

Approved By: Mark Dawson

29/03/2016



### Signs and symbols

- Existing Sensitive Receptors
- Proposed Sensitive Receptors
- Existing Buildings
- Site Boundary
- Roads

### Noise levels in $L_{A10}$ dB(A)

	< 35
	35 - 40
	40 - 45
	45 - 50
	50 - 55
	55 - 60
	60 - 65
	65 - 70
	70 - 75
	75 - 80
	80 - 85
	$\geq 85$



Length scale 1:8750

0 90 180 270  
m



your earth our world

Wardell Armstrong  
2 The Avenue, Leigh, Greater Manchester, WN7 1ES, United Kingdom  
Telephone: +44 (0)1942 260101 Facsimile: +44 (0)1942 261754 www.wardell-armstrong.com

ENERGY AND CLIMATE CHANGE  
ENVIRONMENT AND SUSTAINABILITY  
INFRASTRUCTURE AND UTILITIES  
LAND AND PROPERTY  
MINING, QUARRYING AND MINERAL ESTATES  
WASTE RESOURCE MANAGEMENT



Wykham Park Farm Banbury  
CA10769

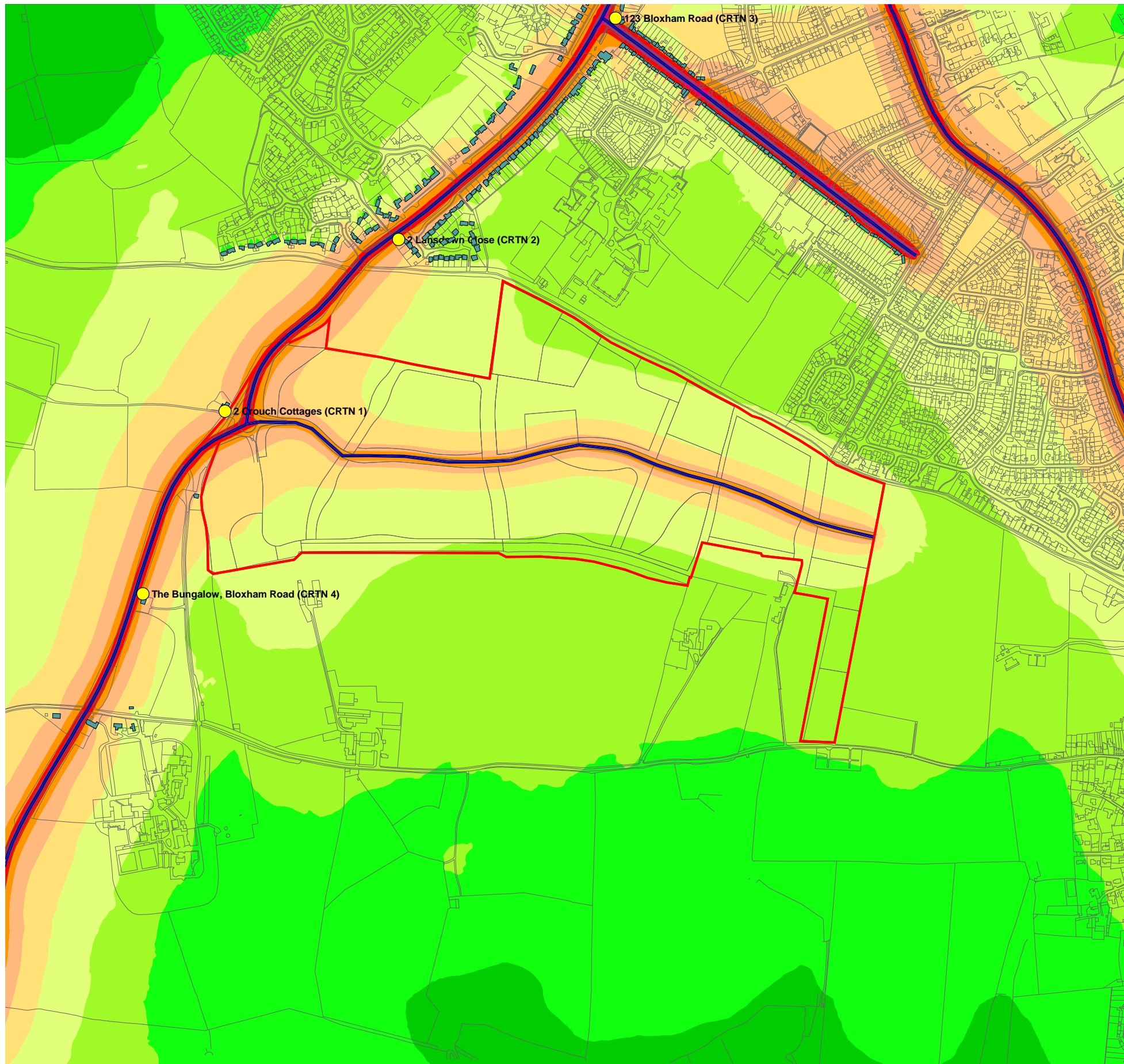
## Figure 7.5 Scenario 3: 2031 DS1noLR

Drawn By: R Calvert

Checked By: R Calvert

Approved By: Mark Dawson

29/03/2016



### Signs and symbols

- Existing Sensitive Receptors
- Proposed Sensitive Receptors
- Existing Buildings
- Site Boundary
- Roads

### Noise levels in $L_{A10}$ dB(A)

	< 35
	35 - 40
	40 - 45
	45 - 50
	50 - 55
	55 - 60
	60 - 65
	65 - 70
	70 - 75
	75 - 80
	80 - 85
	$\geq 85$



Length scale 1:8750

0 90 180 270  
m



your earth our world

Wardell Armstrong  
2 The Avenue, Leigh, Greater Manchester, WN7 1ES, United Kingdom  
Telephone: +44 (0)1942 260101 Facsimile: +44 (0)1942 261754 www.wardell-armstrong.com

ENERGY AND CLIMATE CHANGE  
ENVIRONMENT AND SUSTAINABILITY  
INFRASTRUCTURE AND UTILITIES  
LAND AND PROPERTY  
MINING, QUARRYING AND MINERAL ESTATES  
WASTE RESOURCE MANAGEMENT



Wykham Park Farm Banbury  
CA10769

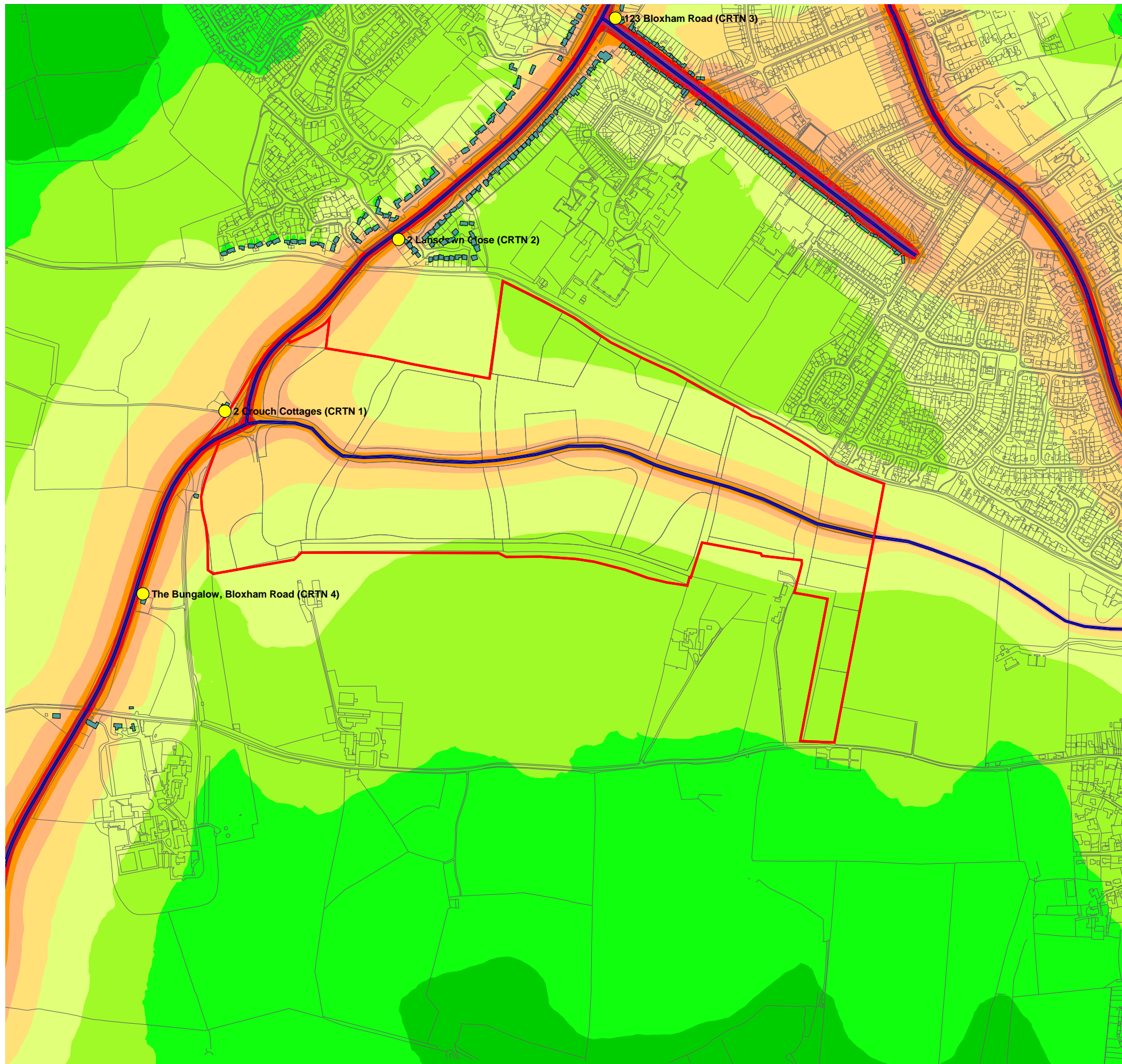
## Figure 7.6 Scenario 4: 2031 DS1+LR

Drawn By: R Calvert

Checked By: R Calvert

Approved By: Mark Dawson

29/03/2016



### Signs and symbols

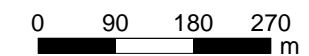
- Existing Sensitive Receptors
- Proposed Sensitive Receptors
- Existing Buildings
- Site Boundary
- Roads
- General text
- Road axis
- Surface
- Elevation line

### Noise levels in $L_{A10}$ dB(A)

	< 35
	35 - 40
	40 - 45
	45 - 50
	50 - 55
	55 - 60
	60 - 65
	65 - 70
	70 - 75
	75 - 80
	80 - 85
	$\geq 85$



Length scale 1:8750



your earth our world

Wardell Armstrong  
2 The Avenue, Leigh, Greater Manchester, WN7 1ES, United Kingdom  
Telephone: +44 (0)1942 260101 Facsimile: +44 (0)1942 261754 www.wardell-armstrong.com

ENERGY AND CLIMATE CHANGE  
ENVIRONMENT AND SUSTAINABILITY  
INFRASTRUCTURE AND UTILITIES  
LAND AND PROPERTY  
MINING, QUARRYING AND MINERAL ESTATES  
WASTE RESOURCE MANAGEMENT



Wykham Park Farm Banbury  
CA10769

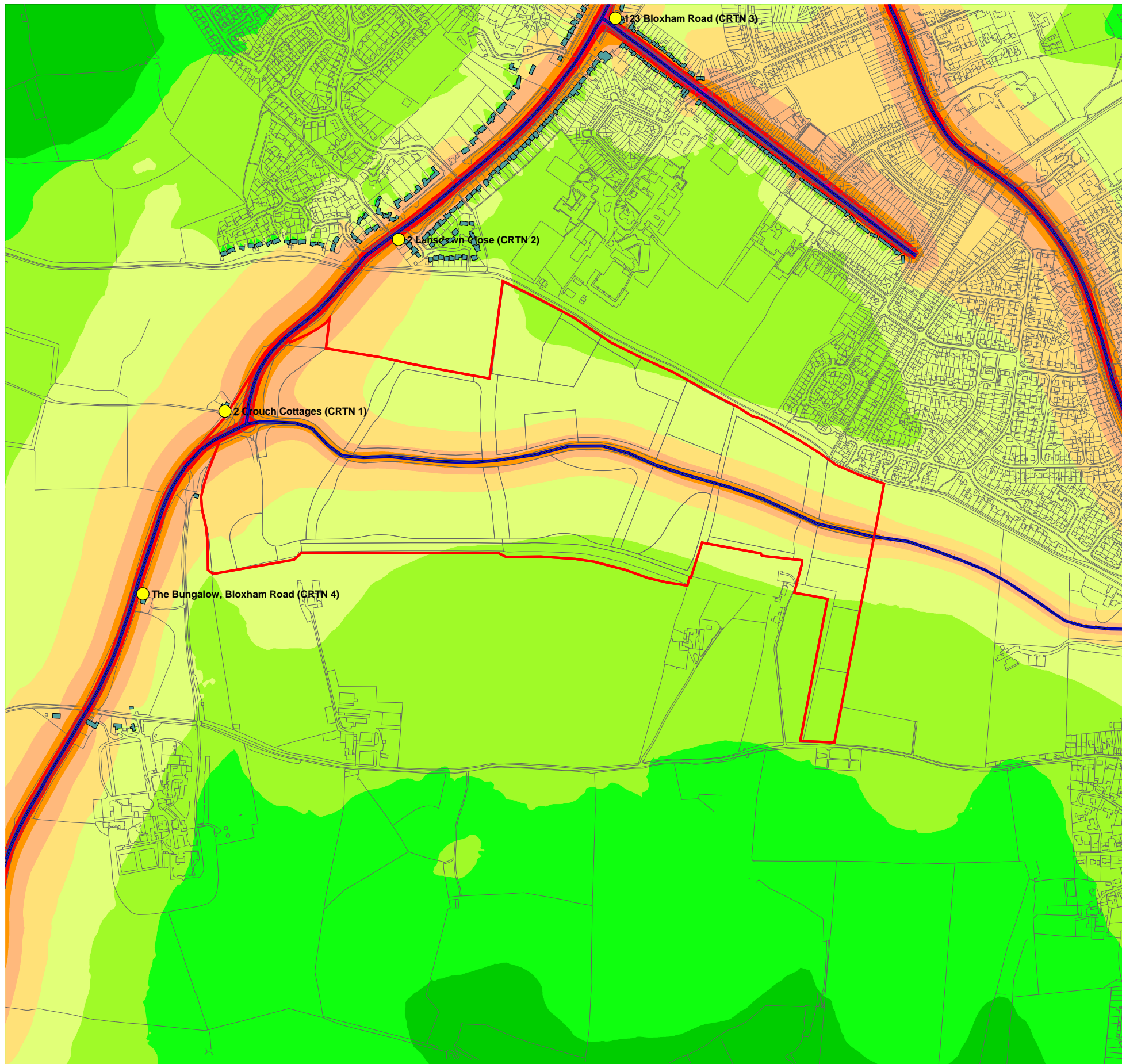
## Figure 7.7 Scenario 5: 2031 DS3+LR

Drawn By: R Calvert

Checked By: R Calvert

Approved By: Mark Dawson

29/03/2016



### Signs and symbols

- Existing Sensitive Receptors
- Proposed Sensitive Receptors
- Existing Buildings
- Site Boundary
- Roads
- General text
- Road axis
- Surface
- Elevation line

### Noise levels in $L_{A10}$ dB(A)

	< 35
	35 - 40
	40 - 45
	45 - 50
	50 - 55
	55 - 60
	60 - 65
	65 - 70
	70 - 75
	75 - 80
	80 - 85
	$\geq 85$



Length scale 1:8750

0 90 180 270  
m



your earth our world

Wardell Armstrong  
2 The Avenue, Leigh, Greater Manchester, WN7 1ES, United Kingdom  
Telephone: +44 (0)1942 260101 Facsimile: +44 (0)1942 261754 www.wardell-armstrong.com

ENERGY AND CLIMATE CHANGE  
ENVIRONMENT AND SUSTAINABILITY  
INFRASTRUCTURE AND UTILITIES  
LAND AND PROPERTY  
MINING, QUARRYING AND MINERAL ESTATES  
WASTE RESOURCE MANAGEMENT



Wykham Park Farm Banbury  
CA10769

## Figure 7.8 Difference Plot

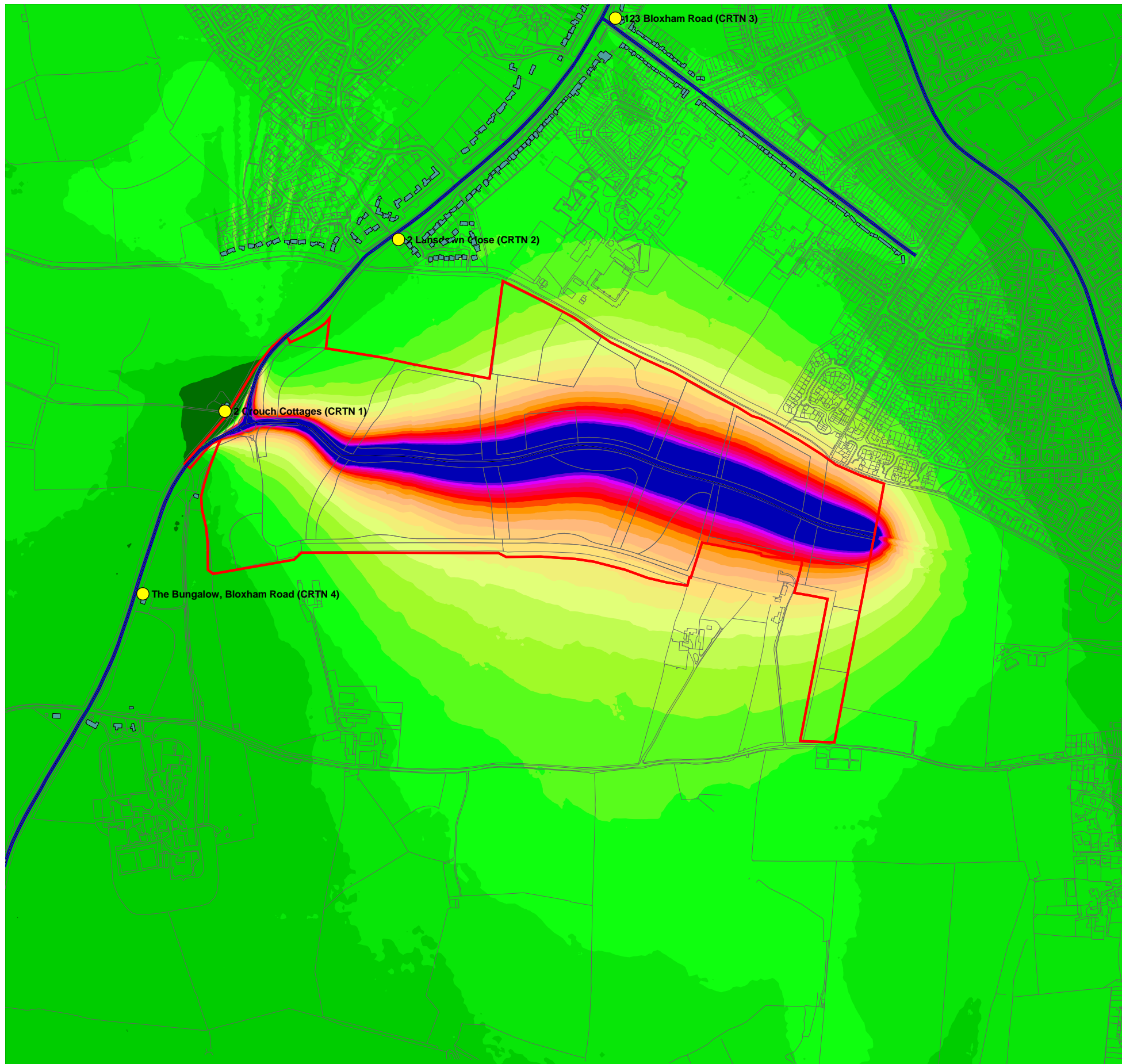
2031 no link road, with (minus) without development

Drawn By: R Calvert

Checked By: R Calvert

Approved By: Mark Dawson

29/03/2016



### Signs and symbols

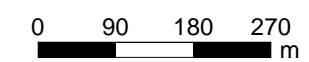
- Existing Sensitive Receptors
- Proposed Sensitive Receptors
- Existing Buildings
- Site Boundary
- Roads
- General text
- Road axis
- Surface
- Elevation line

### Noise levels in $L_{A10}$ dB(A)

	< 0
	0 - 1
	1 - 2
	2 - 3
	3 - 4
	4 - 5
	5 - 6
	6 - 7
	7 - 8
	8 - 9
	9 - 10
	$\geq 10$



Length scale 1:8750



your earth our world

Wardell Armstrong  
2 The Avenue, Leigh, Greater Manchester, WN7 1ES, United Kingdom  
Telephone: +44 (0)1942 260101 Facsimile: +44 (0)1942 261754 www.wardell-armstrong.com

ENERGY AND CLIMATE CHANGE  
ENVIRONMENT AND SUSTAINABILITY  
INFRASTRUCTURE AND UTILITIES  
LAND AND PROPERTY  
MINING, QUARRYING AND MINERAL ESTATES  
WASTE RESOURCE MANAGEMENT



Wykham Park Farm Banbury  
CA10769

## Figure 7.9 Difference Plot

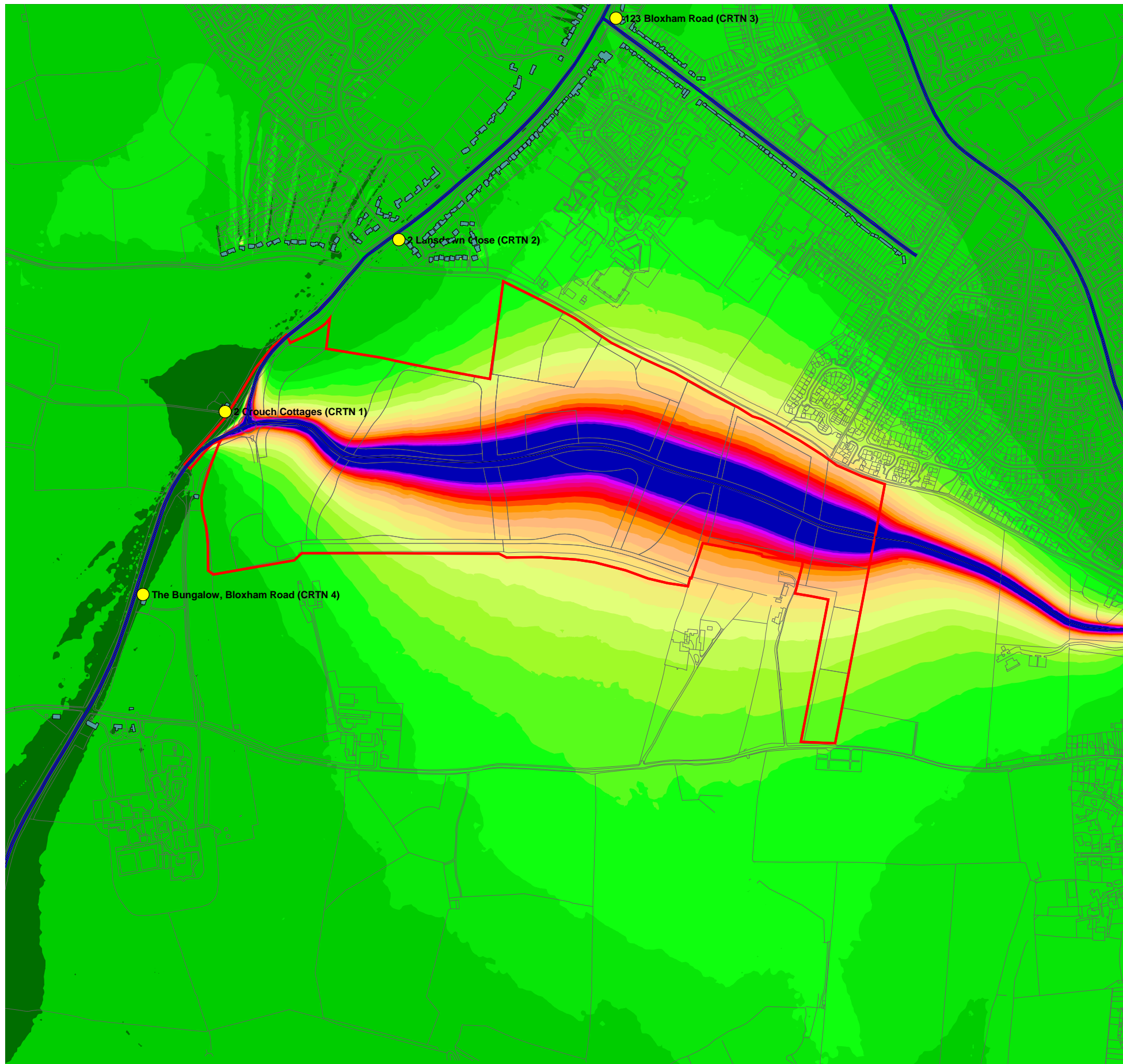
2031 with (minus) without development with LR

Drawn By: R Calvert

Checked By: R Calvert

Approved By: Mark Dawson

29/03/2016



### Signs and symbols

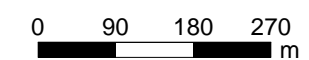
- Existing Sensitive Receptors
- Proposed Sensitive Receptors
- Existing Buildings
- Site Boundary
- Roads
- General text
- Road axis
- Surface
- Elevation line

### Noise levels in $L_{A10}$ dB(A)

	< 0
	0 - 1
	1 - 2
	2 - 3
	3 - 4
	4 - 5
	5 - 6
	6 - 7
	7 - 8
	8 - 9
	9 - 10
	$\geq 10$



Length scale 1:8750



**wardell  
armstrong**

*your earth our world*

Wardell Armstrong  
2 The Avenue, Leigh, Greater Manchester, WN7 1ES, United Kingdom  
Telephone: +44 (0)1942 260101 Facsimile: +44 (0)1942 261754 [www.wardell-armstrong.com](http://www.wardell-armstrong.com)

ENERGY AND CLIMATE CHANGE  
ENVIRONMENT AND SUSTAINABILITY  
INFRASTRUCTURE AND UTILITIES  
LAND AND PROPERTY  
MINING, QUARRYING AND MINERAL ESTATES  
WASTE RESOURCE MANAGEMENT



Wykham Park Farm Banbury  
CA10769

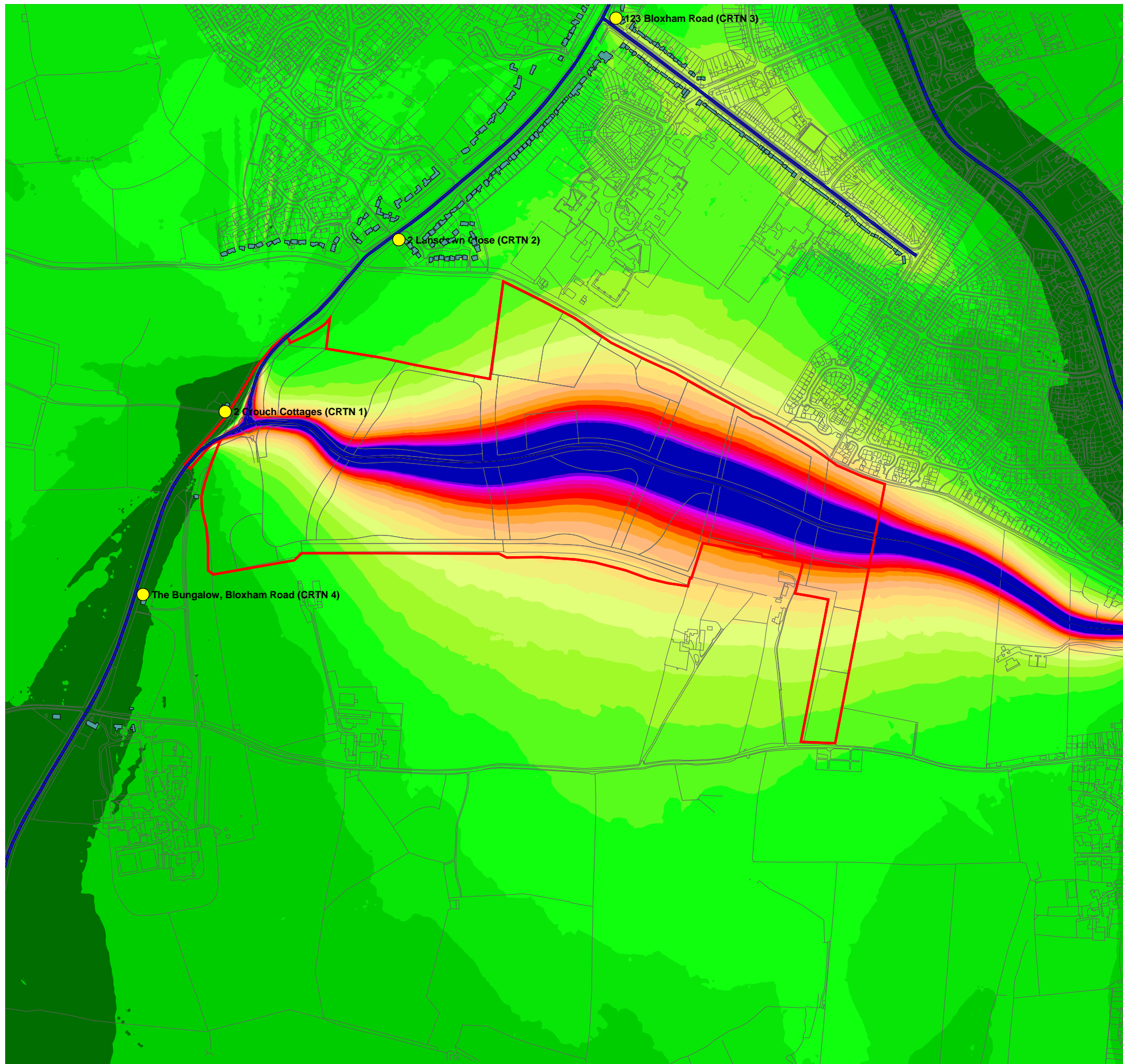
## Figure 7.10 Difference Plot 2031 with development (minus) 2014 Baseline

Drawn By: R Calvert

Checked By: R Calvert

Approved By: Mark Dawson

29/03/2016



### Signs and symbols

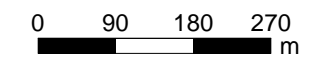
- Existing Sensitive Receptors
- Proposed Sensitive Receptors
- Existing Buildings
- Site Boundary
- Roads
- General text
- Road axis
- Surface
- Elevation line

### Noise levels in $L_{A10}$ dB(A)

	< 0
	0 - 1
	1 - 2
	2 - 3
	3 - 4
	4 - 5
	5 - 6
	6 - 7
	7 - 8
	8 - 9
	9 - 10
	$\geq 10$



Length scale 1:8750



*your earth our world*

Wardell Armstrong  
2 The Avenue, Leigh, Greater Manchester, WN7 1ES, United Kingdom  
Telephone: +44 (0)1942 260101 Facsimile: +44 (0)1942 261754 www.wardell-armstrong.com

ENERGY AND CLIMATE CHANGE  
ENVIRONMENT AND SUSTAINABILITY  
INFRASTRUCTURE AND UTILITIES  
LAND AND PROPERTY  
MINING, QUARRYING AND MINERAL ESTATES  
WASTE RESOURCE MANAGEMENT



Wykham Park Farm Banbury  
CA10769

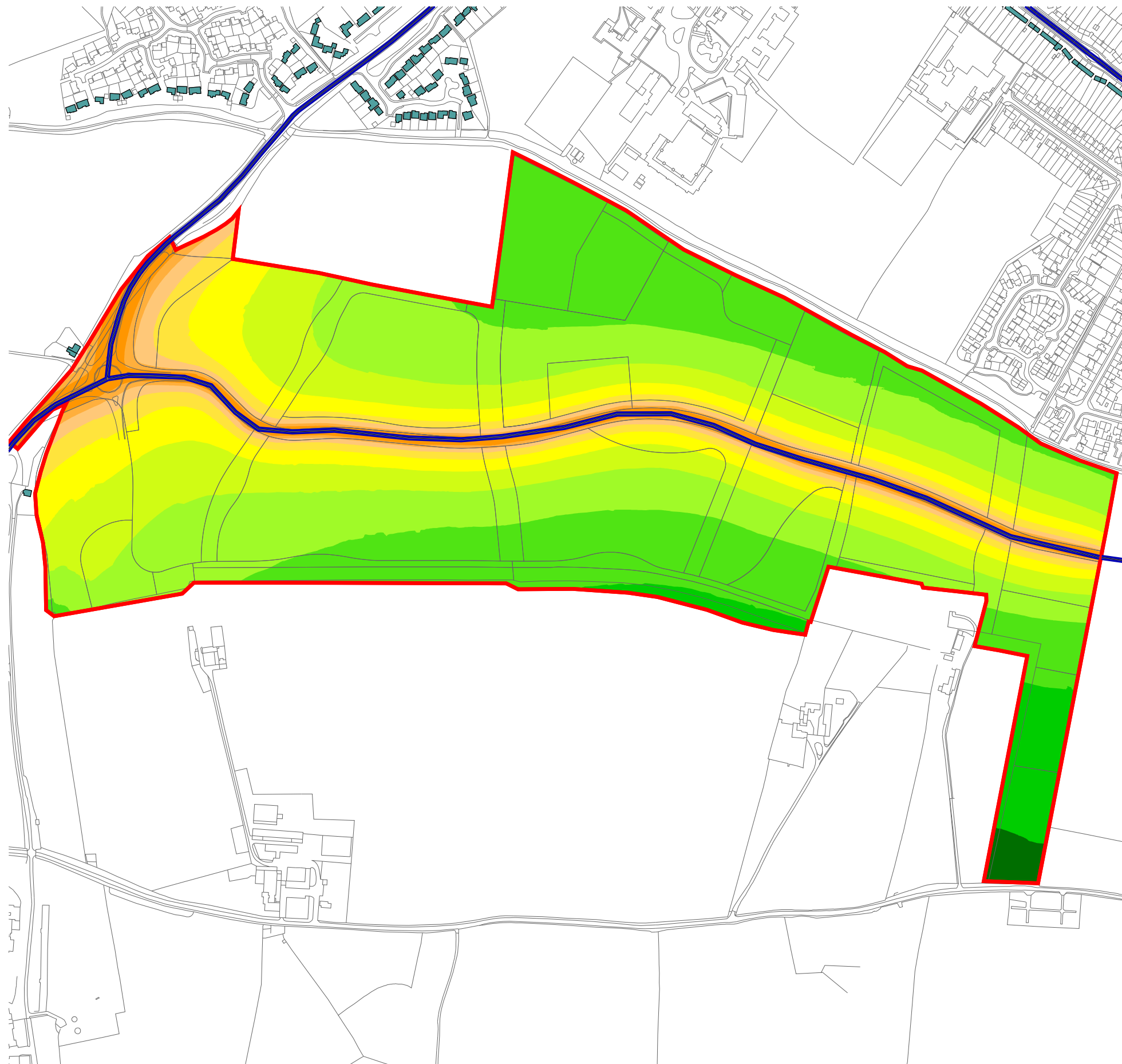
## Figure 7.11 External Daytime Noise

Drawn By: R Calvert

Checked By: R Calvert

Approved By: Mark Dawson

29/03/2016



### Signs and symbols

- Existing Sensitive Receptors
- Proposed Sensitive Receptors
- Existing Buildings
- Site Boundary
- Roads

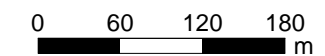
### Noise levels

in  $L_{Aeq,16Hour}$  dB(A)

	< 45
	45 - 50
	50 - 55
	55 - 60
	60 - 65
	$\geq$ 65



Length scale 1:5500



your earth our world

Wardell Armstrong  
2 The Avenue, Leigh, Greater Manchester, WN7 1ES, United Kingdom  
Telephone: +44 (0)1942 260101 Facsimile: +44 (0)1942 261754 www.wardell-armstrong.com

ENERGY AND CLIMATE CHANGE  
ENVIRONMENT AND SUSTAINABILITY  
INFRASTRUCTURE AND UTILITIES  
LAND AND PROPERTY  
MINING, QUARRYING AND MINERAL ESTATES  
WASTE RESOURCE MANAGEMENT



Wykham Park Farm Banbury  
CA10769

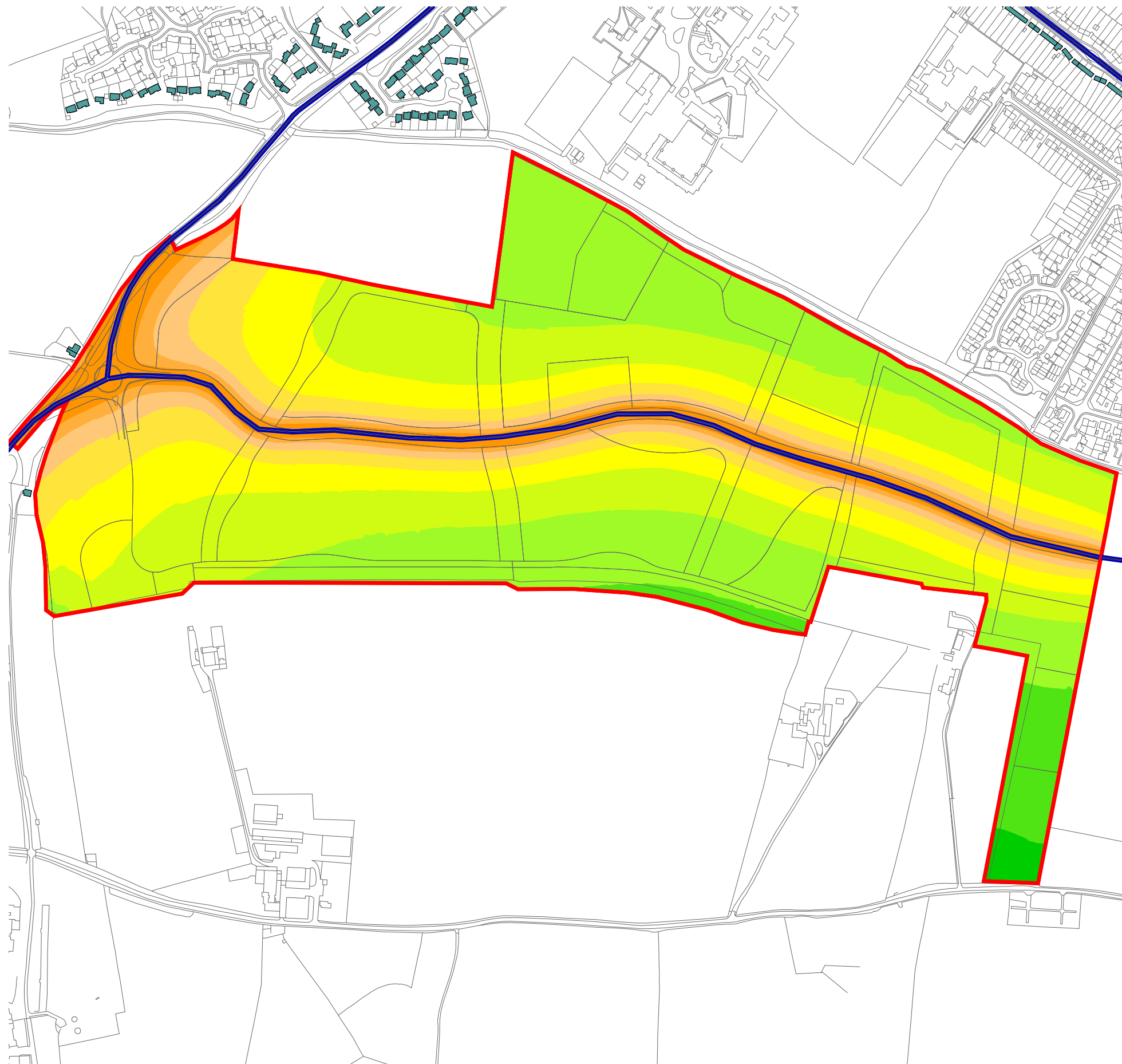
## Figure 7.12 Daytime Noise at Facades

Drawn By: R Calvert

Checked By: R Calvert

Approved By: Mark Dawson

29/03/2016



### Signs and symbols

- Existing Sensitive Receptors
- Proposed Sensitive Receptors
- Existing Buildings
- Site Boundary
- Roads

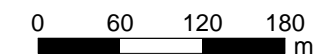
### Noise levels

in  $L_{Aeq,16Hour}$  dB(A)

	< 45
	45 - 50
	50 - 55
	55 - 60
	60 - 65
	$\geq$ 65



Length scale 1:5500



*your earth our world*

Wardell Armstrong  
2 The Avenue, Leigh, Greater Manchester, WN7 1ES, United Kingdom  
Telephone: +44 (0)1942 260101 Facsimile: +44 (0)1942 261754 [www.wardell-armstrong.com](http://www.wardell-armstrong.com)

ENERGY AND CLIMATE CHANGE  
ENVIRONMENT AND SUSTAINABILITY  
INFRASTRUCTURE AND UTILITIES  
LAND AND PROPERTY  
MINING, QUARRYING AND MINERAL ESTATES  
WASTE RESOURCE MANAGEMENT



Wykham Park Farm Banbury  
CA10769

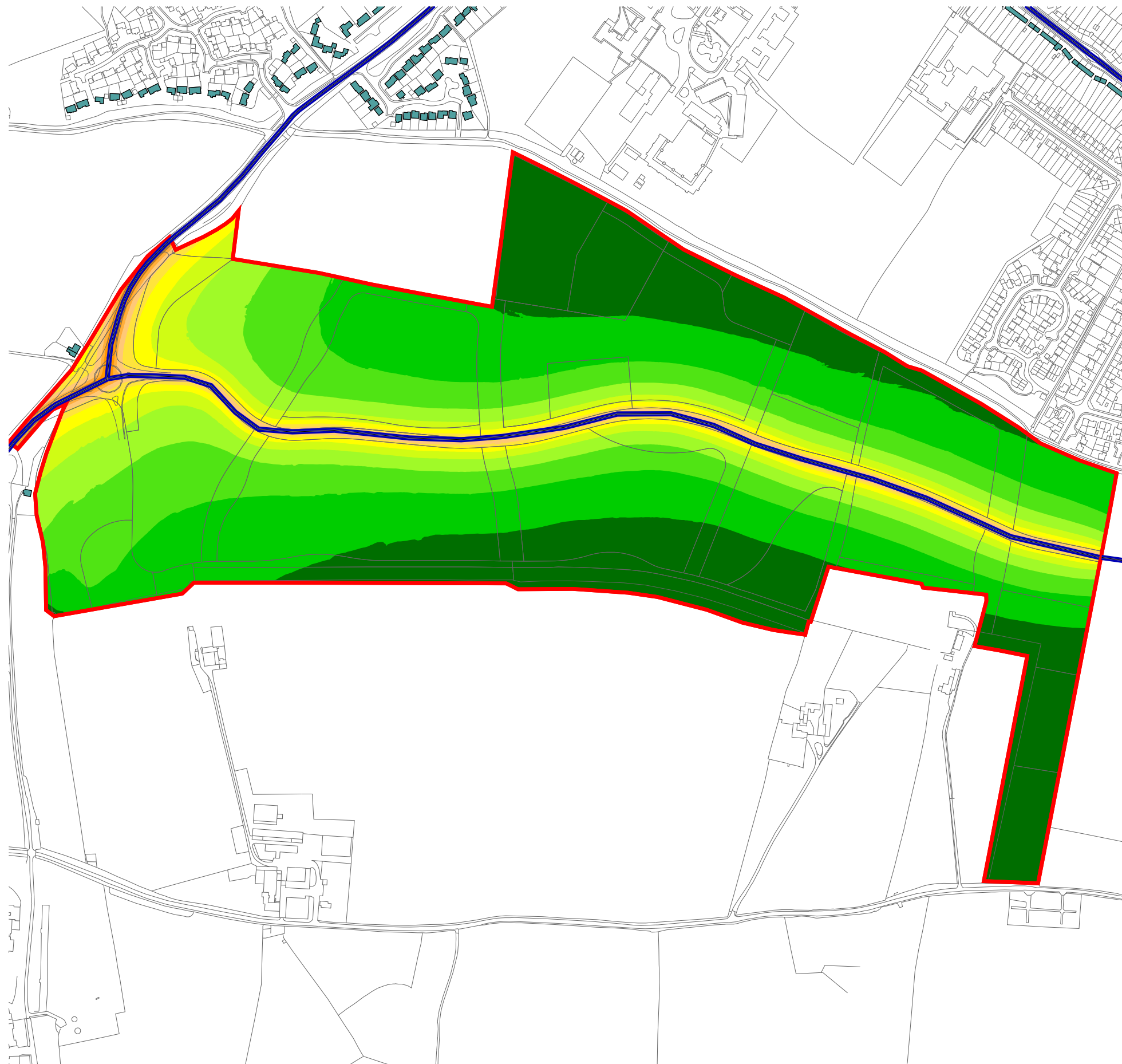
## Figure 7.13 Night-time Noise at Facades

Drawn By: R Calvert

Checked By: R Calvert

Approved By: Mark Dawson

29/03/2016



### Signs and symbols

- Existing Sensitive Receptors
- Proposed Sensitive Receptors
- Existing Buildings
- Site Boundary
- Roads

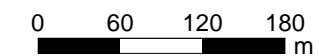
### Noise levels

in  $L_{Aeq,8Hour}$  dB(A)

	< 45
	45 - 50
	50 - 55
	55 - 60
	60 - 65
	$\geq 65$



Length scale 1:5500



your earth our world

Wardell Armstrong  
2 The Avenue, Leigh, Greater Manchester, WN7 1ES, United Kingdom  
Telephone: +44 (0)1942 260101 Facsimile: +44 (0)1942 261754 www.wardell-armstrong.com

ENERGY AND CLIMATE CHANGE  
ENVIRONMENT AND SUSTAINABILITY  
INFRASTRUCTURE AND UTILITIES  
LAND AND PROPERTY  
MINING, QUARRYING AND MINERAL ESTATES  
WASTE RESOURCE MANAGEMENT