

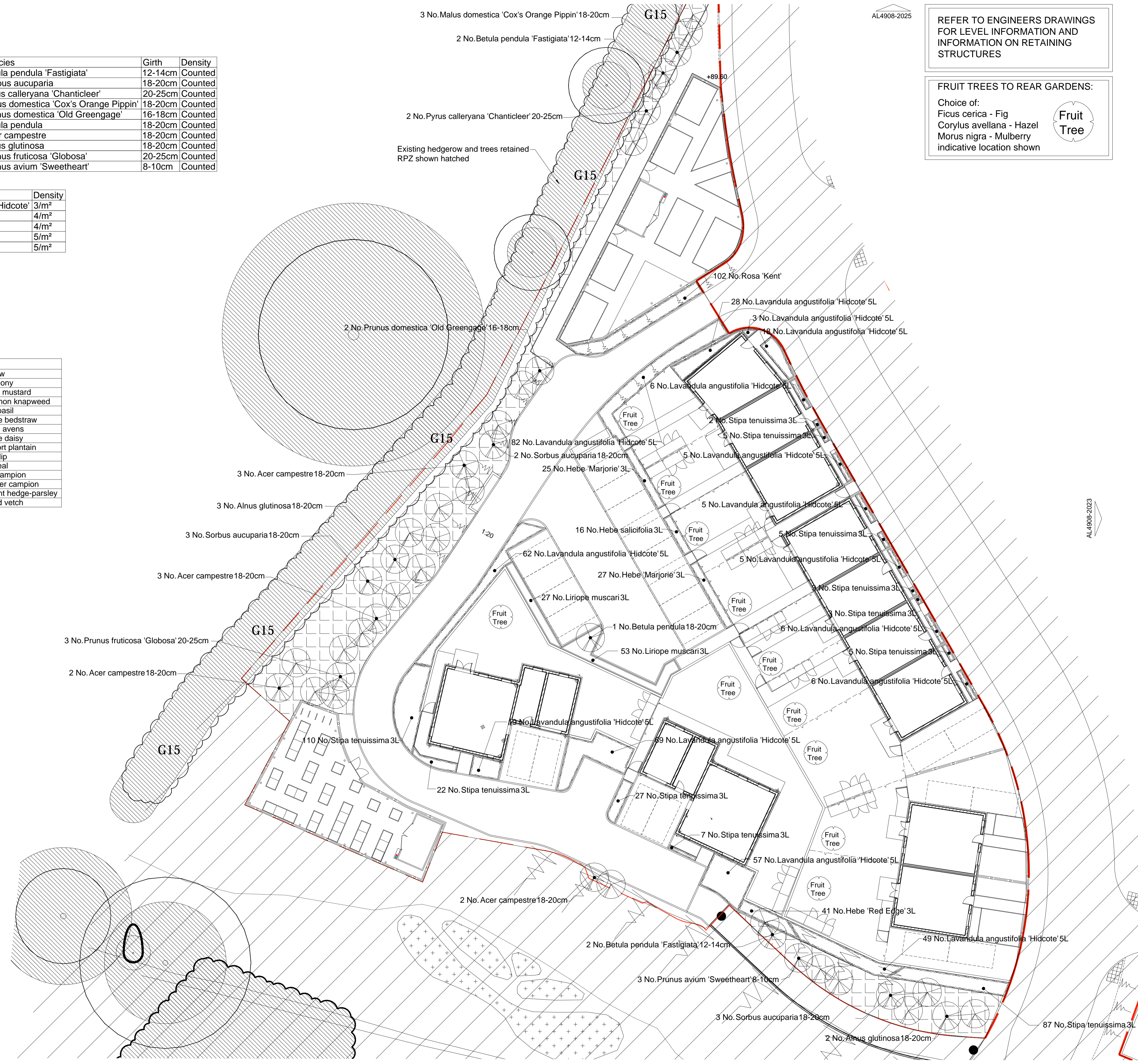
AL4908-2024

Trees				
Number	Common Name	Species	Girth	Density
4 No.	Fastigate Silver Birch	Betula pendula 'Fastigiata'	12-14cm	Counted
8 No.	Rowan	Sorbus aucuparia	18-20cm	Counted
2 No.	Flowering Pear 'Chanticleer'	Pyrus calleryana 'Chanticleer'	20-25cm	Counted
3 No.	Apple 'Cox's Orange Pippin'	Malus domestica 'Cox's Orange Pippin'	18-20cm	Counted
2 No.	Gage 'Old Greengage'	Prunus domestica 'Old Greengage'	16-18cm	Counted
1 No.	Common Silver Birch	Betula pendula	18-20cm	Counted
10 No.	Common Maple	Acer campestre	18-20cm	Counted
5 No.	Common Alder	Alnus glutinosa	18-20cm	Counted
3 No.	Dwarf Globe Cherry	Prunus fruticosa 'Globosa'	20-25cm	Counted
3 No.	Cherry 'Sweetheart'	Prunus avium 'Sweetheart'	8-10cm	Counted

Shrubs			
Number	Pot Size	Species	Density
420 No.	5L	Lavandula angustifolia 'Hidcote'	3/m <sup>2</sup>
16 No.	3L	Hebe salicifolia	4/m <sup>2</sup>
52 No.	3L	Hebe 'Marjorie'	4/m <sup>2</sup>
102 No.		Rosa 'Kent'	5/m <sup>2</sup>
41 No.	3L	Hebe 'Red Edge'	5/m <sup>2</sup>

Grasses		
Number	Species	Density
276 No.	Stipa tenuissima	5/m <sup>2</sup>
80 No.	Liriope muscari	3/m <sup>2</sup>

Shade Tolerant Mix	
Achillea millefolium	Yarrow
Agrimonia eupatoria	Agrimony
Alliaria petiolata	Garlic mustard
Centaurea nigra	Common knapweed
Clinopodium vulgare	Wild basil
Galium album	Hedge bedstraw
Geum urbanum	Wood avens
Leucanthemum vulgare	Oxeye daisy
Plantago lanceolata	Ribwort plantain
Primula veris	Cowslip
Prunella vulgaris	Selfheal
Silene dioica	Red campion
Silene vulgaris	Bladder campion
Torilis japonica	Upright hedge-parsley
Vicia cracca	Tufted vetch



REFER TO ENGINEERS DRAWINGS FOR LEVEL INFORMATION AND INFORMATION ON RETAINING STRUCTURES

FRUIT TREES TO REAR GARDENS:  
Choice of:  
Ficus carica - Fig  
Corylus avellana - Hazel  
Morus nigra - Mulberry  
indicative location shown

notes

- The contractor is responsible for checking dimensions, tolerances and references. Any discrepancy to be verified with the Architect before proceeding with the works.
- Where an item is covered by drawings to different scales the larger scale drawing is to be worked to.
- Do not scale drawing. Figured dimensions to be worked to in all cases.

CDM Regulations 2015

ALL current drawings and specifications for the project must be read in conjunction with the Designer's Hazard and Environmental Assessment Record.

KEY PLAN NTS

24/06/16	C	Issued for planning	MQ/AGF
11/04/16	B	Common names of trees added & updated to reflect GA changes	MQ/AGF
03/07/15	A	Drawing amended to reflect comments by Silver.	MQ/AGF

date	rev	revision/author/checker
------	-----	-------------------------

purpose of issue  
**PLANNING**

project  
**Bicester Eco Town Exemplar Site, Phase 2**

drawing  
**PLANTING PLAN 4 OF 5**

drawing no	AL4908-2024	rev	C
drawn	EM	checked	MQ
scale @ A1	1:200	date	April '15

PRP Architects ©  
10 Lindsey Street  
Smithfield  
London  
EC1A 9JP  
T +44 (0)20 7653 1200  
F +44 (0)20 7653 1201  
lon.prp@prparchitects.co.uk