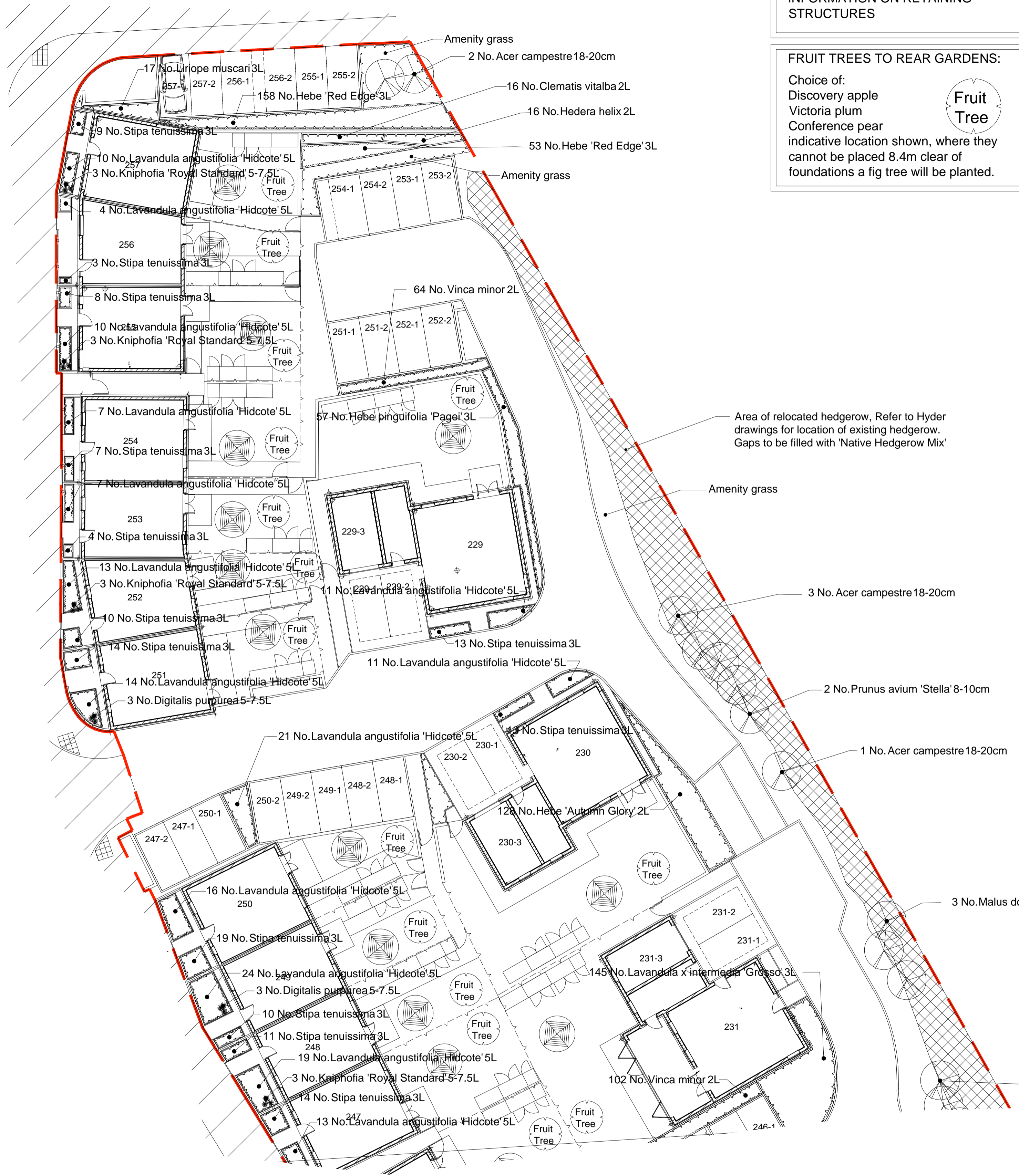
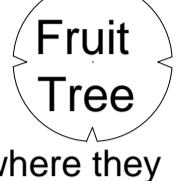


REFER TO ENGINEERS DRAWINGS FOR LEVEL INFORMATION AND INFORMATION ON RETAINING STRUCTURES

FRUIT TREES TO REAR GARDENS:
Choice of:
Discovery apple
Victoria plum
Conference pear
indicative location shown, where they cannot be placed 8.4m clear of foundations a fig tree will be planted.



AL4908-2025

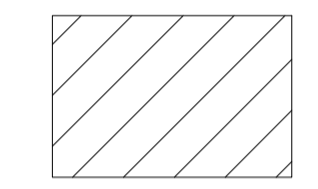
Trees				
Number	Common Name	Species	Girth	Density
6 No.	Common Maple	Acer campestre	18-20cm	Counted
3 No.	Apple 'Cox's Orange Pippin'	Malus domestica 'Cox's Orange Pippin'	18-20cm	Counted
2 No.	Cherry 'Stella'	Prunus avium 'Stella'	8-10cm	Counted
2 No.	Flowering Pear 'Chanticleer'	Pyrus calleryana 'Chanticleer'	20-25cm	Counted

Shrubs			
Number	Pot Size	Species	Density
57 No.	3L	Hebe pinguifolia 'Pagei'	4/m ²
166 No.	2L	Vinca minor	7/m ²
180 No.	5L	Lavandula angustifolia 'Hidcote'	3/m ²
128 No.	2L	Hebe 'Autumn Glory'	5/m ²
145 No.	3L	Lavandula x intermedia 'Grosso'	4/m ²
211 No.	3L	Hebe 'Red Edge'	5/m ²

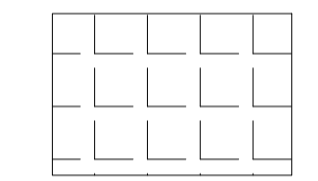
Herbaceous			
Number	Pot Size	Species	Density
3 No.	5-7.5L	Digitalis purpurea	Counted
9 No.	5-7.5L	Kniphofia 'Royal Standard'	Counted

Climbers			
Number	Pot Size	Species	Density
16 No.	2L	Clematis vitalba	3/m ²
16 No.	2L	Hedera helix	3/m ²

Grasses		
Number	Species	Density
17 No.	Liriope muscari	3/m ²
135 No.	Stipa tenuissima	5/m ²



Native Hedgerow Mix	
Cornus sanguinea	Dogwood
Corylus avellana	Hazel
Crataegus monogyna	Hawthorn
Ilex aquifolium	Holly
Ligustrum vulgare	Wild Privet
Prunus spinosa	Blackthorn
Rosa arvensis	Field rose
Rosa canina	Dog-rose
Sambucus nigra	Elder
Viburnum lantana	Wayfaring tree
Viburnum opulus	Guelder rose



Shade Tolerant Mix	
Achillea millefolium	Yarrow
Agrimonia eupatoria	Agrimony
Alliaria petiolata	Garlic mustard
Centaurea nigra	Common knapweed
Clinopodium vulgare	Wild basil
Galium album	Hedge bedstraw
Geum urbanum	Wood avens
Leucanthemum vulgare	Oxeye daisy
Plantago lanceolata	Ribwort plantain
Primula veris	Cowslip
Prunella vulgaris	Selfheal
Silene dioica	Red campion
Silene vulgaris	Bladder campion
Torilis japonica	Upright hedge-parsley
Vicia cracca	Tufted vetch

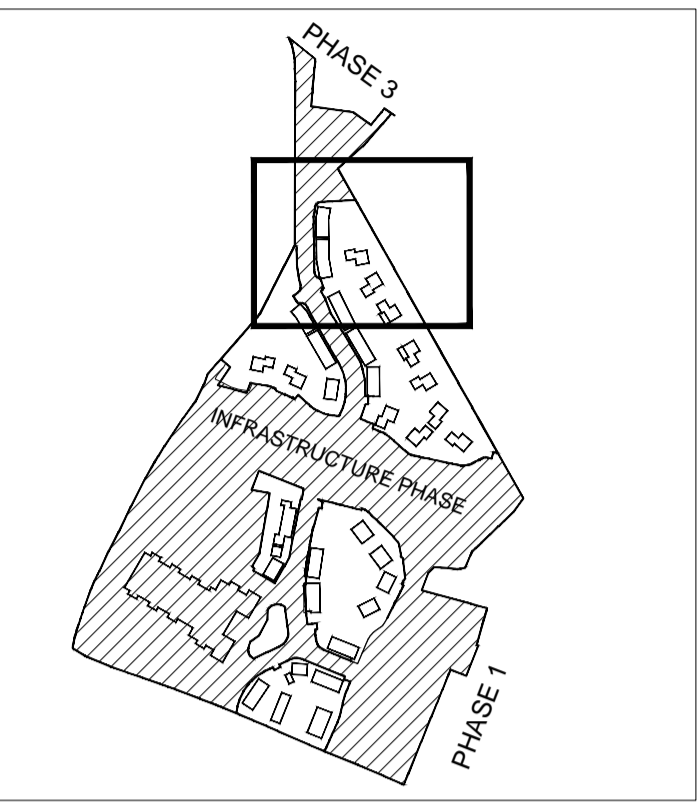
Plants are to be grown and supplied in accordance with National Plant Specification, and planted and maintained to BS4428: 1989

The supply, handling and planting and maintenance operations for the proposed trees are to be in accordance with BS8545:2012

notes

- The contractor is responsible for checking dimensions, tolerances and references. Any discrepancy to be verified with the Architect before proceeding with the works.
- Where an item is covered by drawings to different scales the larger scale drawing is to be worked to.
- Do not scale drawing. Figured dimensions to be worked to in all cases.

CDM Regulations 2015
ALL current drawings and specifications for the project must be read in conjunction with the Designer's Hazard and Environmental Assessment Record.



KEY PLAN NTS

date	rev	revision/author/checker
20/09/16	D	Revised to reflect planners comments MQ/AGF
24/06/16	C	Issued for planning MQ/AGF
11/04/16	B	Common names of trees added & updated to reflect GA changes MQ/AGF
03/07/15	A	Drawing amended to reflect comments by Silver. MQ/AGF

purpose of issue PLANNING
project Bicester Eco Town Exemplar Site, Phase 2
drawing PLANTING PLAN 5 OF 5

drawing no AL4908-2025	rev D
drawn EM	checked MQ
scale @ A1 1:200	date April '15

PRP Architects ©
10 Lindsey Street
Smithfield
London
EC1A 9EP
T +44 (0)20 7653 1200
F +44 (0)20 7653 1201
en.prp@prparchitects.co.uk