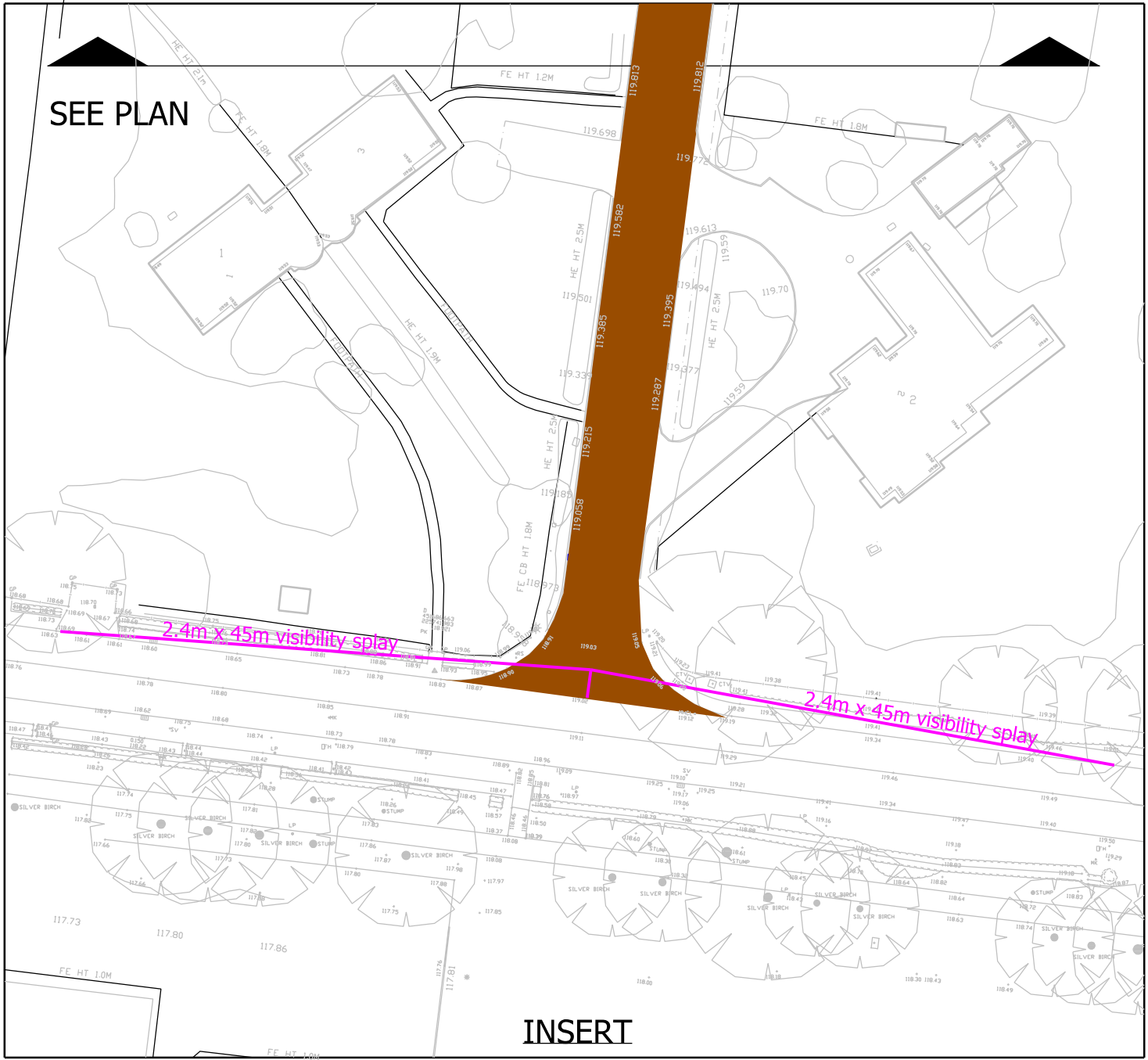


THERE ARE NO EXCEPTIONAL RISKS ASSOCIATED WITH THESE WORKS. REFER TO THE DESIGNERS RISK ASSESSMENT FOR THE FULL ASSESSMENT OF RISKS.

1. CONTRACTORS MUST CHECK ALL DIMENSIONS ON SITE. ONLY FIGURED DIMENSIONS ARE TO BE WORKED FROM. DISCREPANCIES MUST BE REPORTED TO THE ARCHITECT OR ENGINEER BEFORE PROCEEDING. © THIS DRAWING IS COPYRIGHT.
2. REPRODUCED FROM OS SITEMAP © BY PERMISSION OF ORDNANCE SURVEY® ON BEHALF OF THE CONTROLLER OF HER MAJESTY'S STATIONARY OFFICE. © CROWN COPYRIGHT 2008. ALL RIGHTS RESERVED. LICENCE NUMBER 100007126.
3. UNTIL TECHNICAL APPROVAL HAS BEEN OBTAINED FROM THE RELEVANT AUTHORITIES, ALL DRAWINGS ARE ISSUED AS PRELIMINARY AND NOT FOR CONSTRUCTION. SHOULD THE CONTRACTOR COMMENCE SITE WORK PRIOR TO APPROVAL BEING GIVEN IT IS ENTIRELY AT HIS OWN RISK.

KEY

- PROPOSED ADOPTABLE ROADS
- PROPOSED ADOPTABLE FOOTWAY
- PROPOSED ADOPTABLE GRASS AND LANDSCAPING
- PARCEL BOUNDARY
- ADOPTABLE GULLIES
- FOUL WATER SEWERS TO BE ADOPTED UNDER A S104 APPLICATION
- SURFACE WATER SEWERS TO BE ADOPTED UNDER A S104 APPLICATION
- STREET LIGHTING LOCATIONS TO BE CONFIRMED
- 2.4m x 33m visibility splay
- VISIBILITY SPY



REVISION	DESCRIPTION	CG	AT	DATE
A	Visibility splays added			06/01/15

PRELIMINARY ☒ INFORMATION ☐ TENDER ☐ CONSTRUCTION ☐ AS BUILT ☐

**WOODS HARDWICK**  
ARCHITECTS, ENGINEERS AND DEVELOPMENT CONSULTANTS

TITLE UPPER HEYFORD  
PARCEL D5a

DETAILS SECTION 38 LAYOUT

SCALE: 1:500 @ A1 DATE: DECEMBER 2014 DRAWN: CG CHK: AT

15-17 GOLDINGTON ROAD  
BEDFORD MK40 3NH  
UNITED KINGDOM  
T. +44 (0)1234 268862  
F. +44 (0)1234 353034  
MAIL@WOODSHARDWICK.COM  
WWW.WOODSHARDWICK.COM