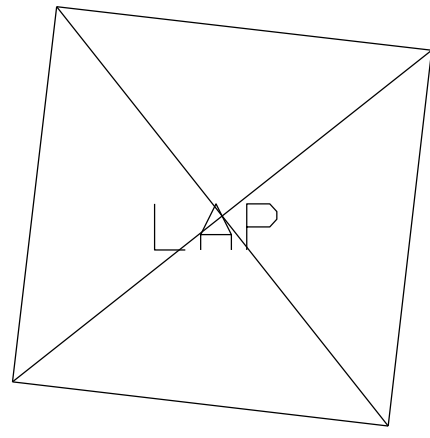
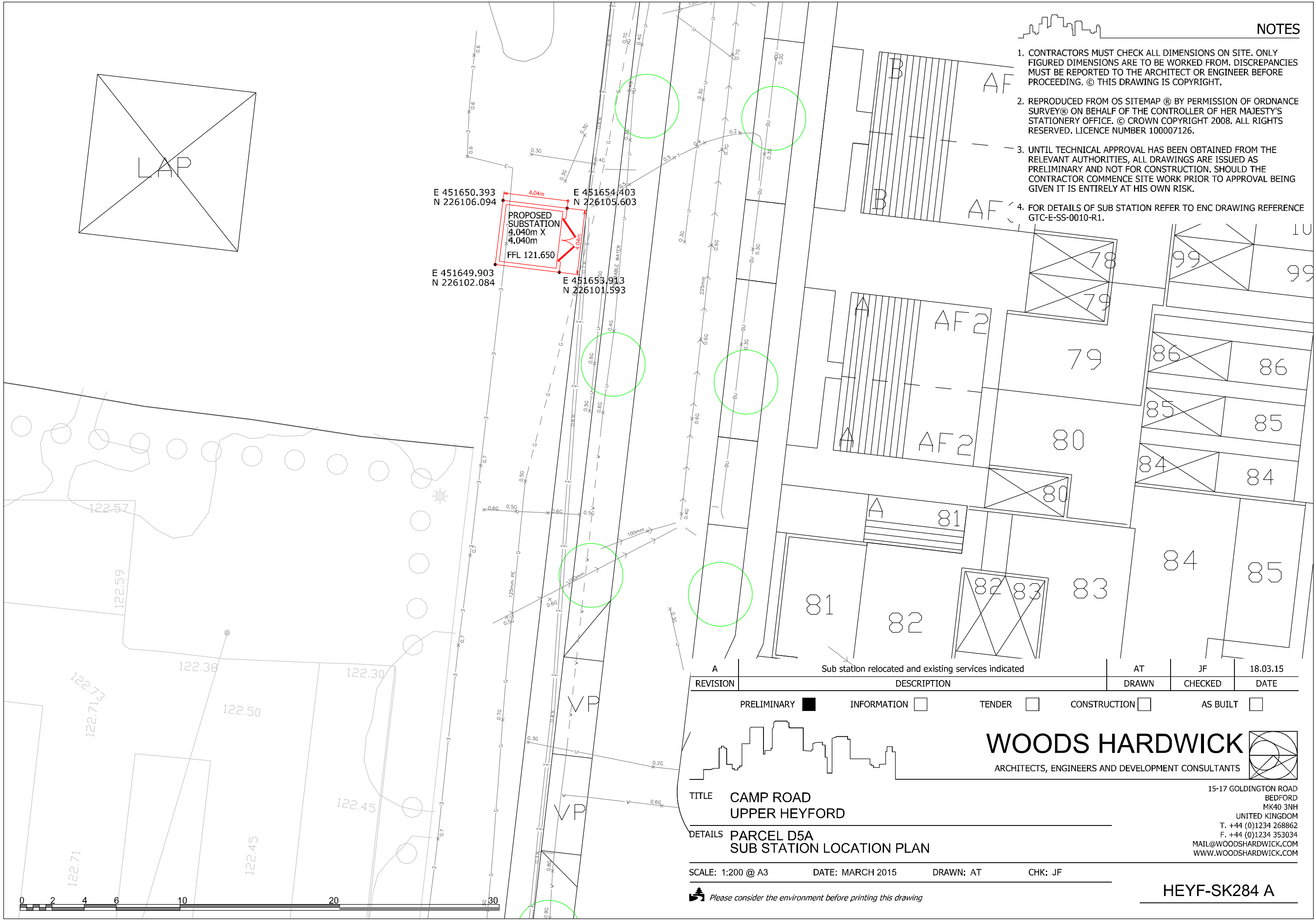


**NOTES**

1. CONTRACTORS MUST CHECK ALL DIMENSIONS ON SITE. ONLY FIGURED DIMENSIONS ARE TO BE WORKED FROM. DISCREPANCIES MUST BE REPORTED TO THE ARCHITECT OR ENGINEER BEFORE PROCEEDING. © THIS DRAWING IS COPYRIGHT.
2. REPRODUCED FROM OS SITEMAP © BY PERMISSION OF ORDNANCE SURVEY® ON BEHALF OF THE CONTROLLER OF HER MAJESTY'S STATIONERY OFFICE. © CROWN COPYRIGHT 2008. ALL RIGHTS RESERVED. LICENCE NUMBER 100007126.
3. UNTIL TECHNICAL APPROVAL HAS BEEN OBTAINED FROM THE RELEVANT AUTHORITIES, ALL DRAWINGS ARE ISSUED AS PRELIMINARY AND NOT FOR CONSTRUCTION. SHOULD THE CONTRACTOR COMMENCE SITE WORK PRIOR TO APPROVAL BEING GIVEN IT IS ENTIRELY AT HIS OWN RISK.
4. FOR DETAILS OF SUB STATION REFER TO ENC DRAWING REFERENCE GTC-E-SS-0010-R1.



E 451650.393 N 226106.094  
 E 451654.403 N 226105.603  
 E 451649.903 N 226102.084  
 E 451653.913 N 226101.593  
**PROPOSED SUBSTATION**  
 4.040m X 4.040m  
 FFL 121.650



REVISION	DESCRIPTION	AT DRAWN	JF CHECKED	18.03.15 DATE
A	Sub station relocated and existing services indicated			

PRELIMINARY  INFORMATION  TENDER  CONSTRUCTION  AS BUILT

**WOODS HARDWICK**  
 ARCHITECTS, ENGINEERS AND DEVELOPMENT CONSULTANTS

15-17 GOLDINGTON ROAD  
 BEDFORD  
 MK40 3NH  
 UNITED KINGDOM  
 T. +44 (0)1234 268862  
 F. +44 (0)1234 353034  
 MAIL@WOODSHARDWICK.COM  
 WWW.WOODSHARDWICK.COM

TITLE **CAMP ROAD UPPER HEYFORD**  
 DETAILS **PARCEL D5A SUB STATION LOCATION PLAN**

SCALE: 1:200 @ A3 DATE: MARCH 2015 DRAWN: AT CHK: JF

**HEYF-SK284 A**

