

Existing trees to be retained

Root protection areas for existing trees
Refer to latest Pegasus Arboricultural survey D.0341_37J for further details.

Soft landscape proposals
Refer to plant schedule for details.

Amenity grass seed
A22 low maintenance amenity grass seed mix. Refer to drawing for potential areas of existing grassland to be retained. Areas to be confirmed on site with the LPA.

Litter bin
Ref: TydeLB 'Tydenan' litter bin as supplied by Orchard Street Furniture or similar approved.

Dog bin
Specification to be agreed.

Tarmac Surfacing
Tarmac surfacing to pathways and seating areas with pcc edging.

Rubber mulch safety surfacing
Brown rubber mulch surfacing to reduce wear and tear to top of mound. Play manufacturers to detail in accordance with EN 1176. Surfacing as supplied by Ecosurface or similar approved.

Proposed ground contouring
Topsoil shall be spread evenly over the formation levels in layers not exceeding 150mm to a depth of 150mm for grass. All slopes shall be graded with a rigid blade grader and consolidated to proposed levels. The gradient of the slopes shall be smooth-flowing marrying with all existing levels.

Play area signage
Possible location for play area signage. Sign to be supplied and erected stating that the play area is a 'Dog Free' zone and any other information required. Exact wording to be agreed with the Local Planning Authority.

'No Dog' paving slab
Paving slabs at entrances by Paragon ref: 6120-186 or similar approved product.

Proposed 1.0m high bow top railings
To Local Authority approved specification. Bow top railings as supplied by Jacksons Fencing or similar approved. Chicane detail to play area entrances.

Proposed maintenance access gate
To Local Authority approved specification. Bow top gate 3.1m wide double leaf gate, as supplied by Jacksons Fencing or similar approved.

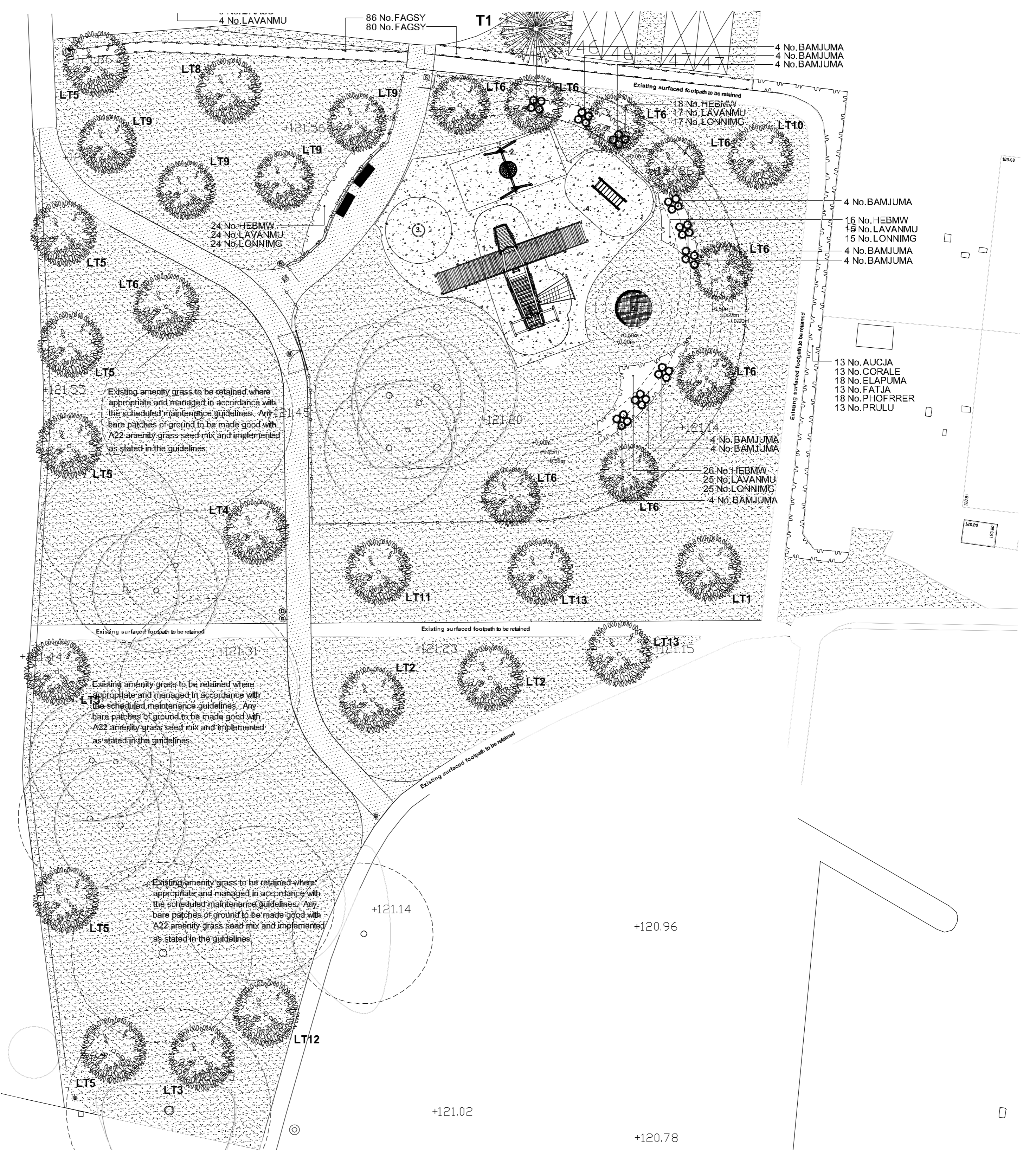
Bench seat
Packham seat, 1.8m length with arm rests as supplied by Orchard Street Furniture or similar approved. Seat to be installed with submerged fixing set in concrete footings to manufacturers specification.

Wetpour
Wetpour surfacing installed to manufacturers specifications in association with the requirements of each item of play equipment relating to fall heights and in accordance with BS EN 1176. Colour: Black.

Block edging to wetpour
Block edging to wetpour surfacing. Marshalls 200x100x60mm concrete 'Keyblock' paving in charcoal or similar approved.

Play equipment schedule (LEAP)
1. **Ibondo Albatros with net**
Multi-play unit supplied by Elbe Play Ltd.
2. **Robinia Swing with birds nest basket**
Swing unit supplied by Norleg.
3. **Huck Honeycomb nest, Eagle Carousel**
Roundabout unit supplied by Huck.
4. **Robinia Gallows with monkey bars**
Climbing unit supplied by Norleg.
5. **Timber log fort**
0.2m diameter timber log fort/rounds constructed using Radiata pine timber rounds. Circular wall installed with concrete footings varying in heights between 0.60m and 1.00m in a fort like fashion. Timber rounds prepared for application within play areas. Supplied by an approved play manufacturer.

All play equipment and layout proposals to be specified in accordance with the requirements set out under BS EN 1176 and the Disability Discrimination Act. Following the agreement of play equipment and the general arrangement the selected manufacturer's details will be submitted to the local council for approval along with the finalised proposals and accompanying certificates and details.



IMPLEMENTATION AND MAINTENANCE GUIDELINES

- 1.0 GENERAL

All plants shall conform to BS 3936 and be in accordance with the National Plant Specification. Supplying nurseries shall be registered under the HTA Nursery Certification Scheme. All plants shall be packed and transported in accordance with the Code of Practice for Plant Handling as produced by CPSE. Planting shall not be carried out when the ground is waterlogged, frostbound or during periods of cold drying winds. All bare root stock shall be root dipped in an approved water-retaining polymer.

If the formation level is compacted it should be ripped through before topsoiling. Recommended topsoil depths are 300mm for shrubs and 150mm for grass.
- 2.0 ORNAMENTAL SHRUBS AND TREES

Ground Preparation
Where necessary treat existing weeds with a glyphosate based herbicide and allow a suitable period as recommended by the manufacturer for this to take effect. A general purpose slow release fertiliser at the rate of 75gm/m2 and Tree Planting and Mulching Compost at the rate of 20litres/m2 are to be incorporated into the top 150mm of topsoil during final cultivations. All extraneous matter such as plastic, wood, metal and stones greater than 50mm in any dimension shall be removed from site.

BS8545:2014 Trees: from nursery to independence in the landscape - Recommendations. Tree planting operations and maintenance is to accord with this British Standard given it is the most current industry standard for establishing trees.

Tree pits to the specified size are to be excavated and the base broken up a further 150mm with the sides well scarified to prevent smearing. All trees up to and including selected standards are to be supported with single 75mm diameter stakes. All rootball, container grown and trees over heavy standard size shall be double staked. Stakes should be driven 500mm into undisturbed ground before planting the tree, taking care to avoid underground services and cables etc.
- 2.2 Planting

Shrubs and hedges are to be set out as shown on the drawing and pit planted into the prepared soil at the specified centres with minimal disturbance to the rootball and well firmed in.

Trees are to be placed into the pits and backfilled with topsoil incorporating slow release fertilizer and Tree Planting and Mulching Compost as specified. Firm trees in well and secure with proprietary rubber tree ties and spacers.

Water in all trees and shrubs at the end of each day of planting.

Spread ornamental pine bark mulch to a depth of 75mm across all new planting areas, ensuring groundcover plants are not buried.
- 2.3 Maintenance

The landscape contractor shall maintain all areas of new planting for a period of 12 months following practical completion. All stock deemed to be dead, dying or diseased within the defects period shall be replaced by the contractor at his own cost.

The site is to be visited monthly throughout the year to undertake the following operations.
Weed clearance: All planting areas are to be kept weed free by hand weeding or herbicide treatment.
Litter clearance: All litter is to be removed from planting beds.
Watering: Planting areas are to be brought up to field capacity at each visit and each tree is to receive 20 gallons.
Checking trees: All tree ties and stakes are to be checked and adjusted if too loose, too tight or if chafing is occurring. Any broken stakes are to be replaced.
Formative pruning: Any damaged shoots/branches are to be pruned back to healthy wood. Plants are to be pruned in accordance with good horticultural practice to maintain healthy well-shaped specimens.
- 3.0 GRASS
- 3.1 Preparation

The area to be turfed or seeded shall be sprayed out with a glyphosate herbicide and cultivated to a depth of 100mm removing all weeds, debris and stones over 25mm diameter. The surface shall be raked to smooth flowing contours with a fine till, incorporating pre-seeding fertiliser at 70 gm/m2.
- 3.2 Delivery and Storage

Turf shall be supplied in accordance with BS3936.

Turf shall be Medallion as supplied by Rowdawn. It shall be close textured and green in colour and be sufficiently fibrous to withstand handling. Turves shall be regular in shape, 300mm wide and of uniform thickness (minimum 25mm). The grass shall be closely mown and shall not exceed 25mm in height.

Turf shall be stacked in piles of up to 1 metre. It shall not be laid in frosty or waterlogged conditions and shall not be stacked in rolls for more than three days.
- 3.3 Turf

Turfing operations shall be in accordance with BS 4428.

Whole turves shall be laid around the perimeter of the area to be turfed. The central area shall be laid in rows with staggered joints, well butted together, working from planks positioned on turves already laid. The turf shall be watered on completion. Any unevenness shall be made good by lifting the turf and adjusting the levels. Should shrinkage occur, fine topsoil shall be brushed into the joints.
- 3.4 Seeding

Grass seed shall be sown in April during calm weather and not when the ground is frost bound or waterlogged. Seed shall be sown in two equal sowings in transverse directions at 35 g/m2. After sowing the contractor shall lightly rake the seed into intimate contact with the soil.
- 3.5 Initial cut

When newly seeded and turfed areas reach 50mm they should be lightly rolled and cut to a height of 30mm. All arisings shall be removed. Any bare patches shall be made good at this time. Seeded areas shall be cut for a second time when the sward reaches 50mm high.

Play Equipment Images



1. Ibondo Albatros with net
Multi-play unit supplied by Elbe Play Ltd.
User group: 3+
Play value: Social, Imaginative, Climbing



2. Robinia swing with birds nest basket
Swing unit supplied by Norleg.
Play value: Swinging, Social



4. Robiniaallows with monkey bars
Climbing unit supplied by Norleg.
Play value: climbing, fitness



3. Honeycomb basket, Eagle Carousel
Roundabout unit supplied by Huck.
Play value: Rotating, Social



5. Log fort
Timber log rounds graded for play areas supplied by an approved play manufacturer.
User group: 3+
Play value: Social, Imaginative

PLANT SCHEDULE

TREES				
REF	SPECIES	SUPPLY	SIZE(cm)	GIRTH(cm)CTRS(m)
LT1	Pinus wallachiana	CG	200/250	- as shown
LT2	Tilia cordata	EHStd	425/600	14/16 as shown
LT3	Acer pseudoplatanus	EHStd	425/600	14/16 as shown
LT4	Quercus robur	EHStd	425/600	14/16 as shown
LT5	Pinus nigra maritima	CG	200/250	- as shown
LT6	Acer campestre 'Elsrijk'	EHStd	425/600	14/16 as shown
LT7	Zelkova carpinifolia	EHStd	425/600	14/16 as shown
LT8	Betula pendula 'Dalecarlica'	EHStd	425/600	14/16 as shown
LT9	Cercidiphyllum japonicum	EHStd	425/600	14/16 as shown
LT10	Pinus bungeana	CG	200/250	as shown
LT11	Quercus coccinea	EHStd	425/600	14/16 as shown
LT12	Quercus rubra	EHStd	425/600	14/16 as shown
LT13	Tilia platyphyllos	EHStd	425/600	14/16 as shown

All trees to be planted in accordance with the implementation and maintenance guidelines. The tree planting schedule and landscape proposals must be referred to by the Structural Engineer during foundation design. No tree species, size or location should be altered without prior approval from the Landscape Architect. CG - Container Grown.

SHRUBS/HERBACEOUS				
ABBR	SPECIES	SUPPLY	SIZE(cm)	HABIT CTRS(m)
BAMJUMA	Fargesia muriellae 'Jumbo'	7.5L	-	Full Pot As shown

HEDGEROWS				
ABBR	SPECIES	SUPPLY	SIZE(cm)	HABIT CTRS(m)
FAGSY	Fagus sylvatica	Fthd x2	150/175	7 breaks 0.30

All hedgerow shrubs to be planted in accordance with the implementation and maintenance guidelines. No hedgerow shrub species, size or location should be altered without prior approval from the Landscape Architect. Stock to be planted in a single row at the specified centres, all stock to be attached to a single line support fence using an approved clip tie and cut back to 1.2m in height at time of planting. Mulched in accordance with implementation and maintenance guidelines. The landscape proposals must be referred to by the Structural Engineer during foundation design.

SHRUB MIX 1				
ABBR	SPECIES	SUPPLY	SIZE(cm)	HABIT CTRS(m)
AUCJA	Aucuba japonica	3L	30/40	Bushy 0.75
CORALE	Cornus alba 'Elegantissima'	3L	40/60	Branched 0.75
ELAPUMA	Elaeagnus pungens 'Maculata'	3L	40/60	Bushy 0.75
FATJA	Fatsia japonica	3L	30/40	Bushy 0.75
PHOFFRRER	Photinia x fraseri 'Red Robin'	3L	30/40	Bushy 0.75
PRULU	Prunus lusitanica	3L	40/60	Bushy 0.75

SHRUB MIX 2				
ABBR	SPECIES	SUPPLY	SIZE(cm)	HABIT CTRS(m)
HEBMW	Hebe 'Mrs Winder'	5L	30/40	Bushy 0.50
LAVANMU	Lavandula ang. 'Munstead'	5L	30/40	Bushy 0.50
LONNIMG	Lonicera nitida 'May Green'	5L	30/40	Bushy 0.50

All shrubs to be planted in accordance with the implementation and maintenance guidelines. No shrub species, size or location should be altered without prior approval from the Landscape Architect.

Rev	Description	Date	Team
J	Increase wet pour around plane	08/04/17	LG
I	Adjustment to position of play equip 4	08/04/17	LG
H	Moved play equip, associated 1/2 adjust to be for mounding and wetpour area to client request	05/04/17	LG
G	Root protection areas shown on the plans	15/11/16	EW
F	Updated to client comments	10/11/16	EW
E	Play area design updated to client comments on equipment	15/08/16	EW
D	Play area design updated to client and CDC comments	28/05/16	JC
C	The species updated following arboriculture officer's comment	05/05/16	JC
B	Tree species updated following arboriculture officer's comment	08/05/15	JC
A	Footpath realigned and additional tree planting	21/04/15	AP

Phase 2, Heyford Park

Public Open Space Proposals
Larsen Road Park

Client:
Dorchester Group

www.pegasuspg.co.uk
Team AP/JC
17/12/2014
Scale: 1:200 @A1

Bir.4322_21J

Pegasus
Design

NOTE: FOR TREE PIT DETAILS PLEASE REFER TO PEGASUS
DRAWING BIR.4322_21 - ROOTBALLED TREE PIT
DETAILS.

NOTES

- All landscape proposals must be referred to by the Structural Engineer during foundation design.
- Soiling operations to be carried out in accordance with the implementation and maintenance guidelines.
- All planting to be in accordance with the implementation and maintenance guidelines.
- No species, variety, size or position to be amended without the Landscape Architects prior approval.
- Before trees are planted, the Landscape Contractor shall ascertain the location of drains from the site manager, and shall if necessary make minor adjustments to tree positions to ensure that they are planted at least 1.5m from drains. They should however be planted no closer to houses/garages than is shown on the drawing, and if shown located in shrub beds, the shape of the latter should be adjusted if necessary to accommodate the revised tree position.
- All planting must be mulched in accordance with the implementation and maintenance guidelines.
- If planting is required outside the October-March season, bare root shrubs will be replaced by 3L pot grown plants, and trees will be replaced by a containerised equivalent to be approved by the project landscape architect.