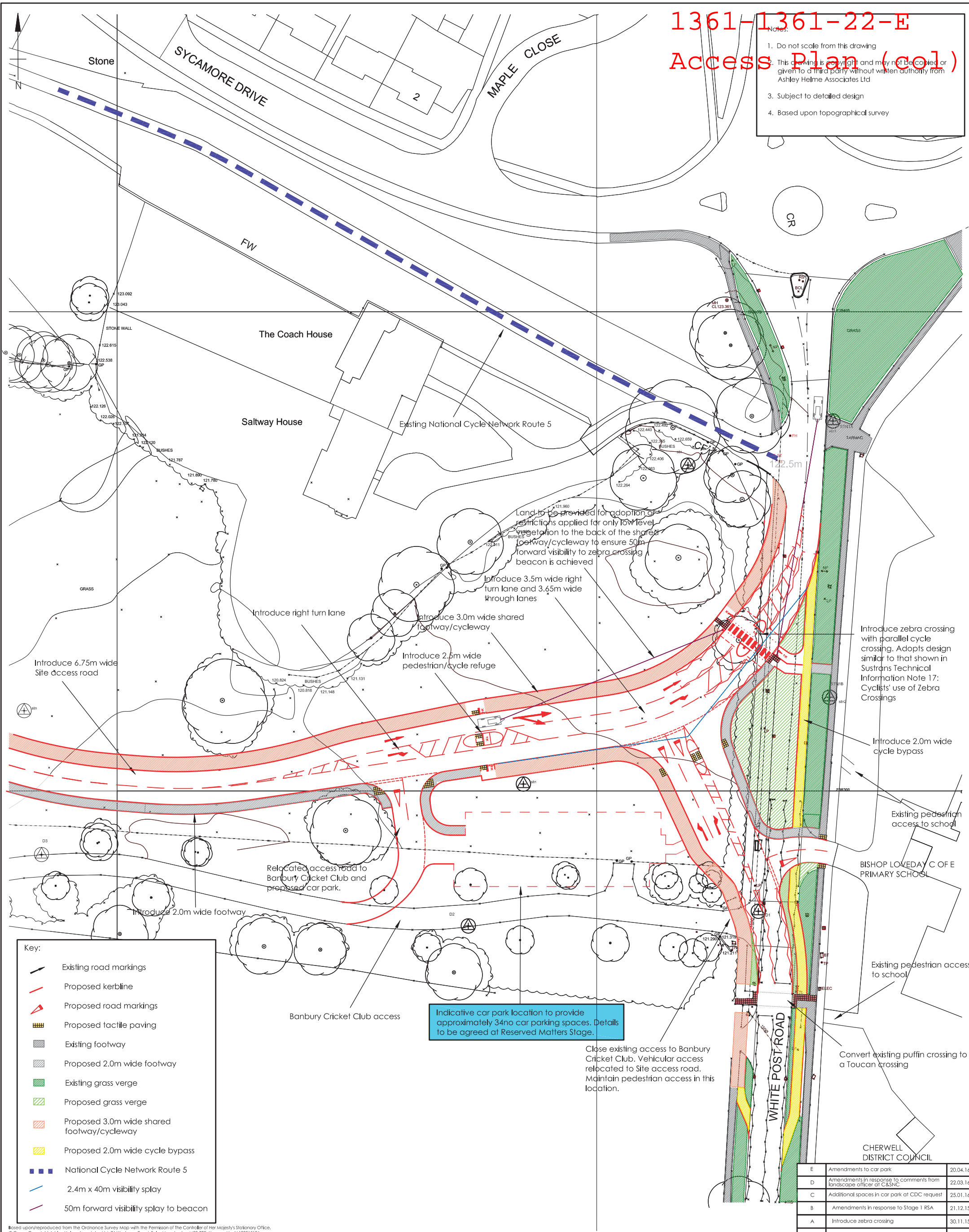


- Notes:
1. Do not scale from this drawing
 2. This drawing is copyright and may not be copied or given to a third party without written authority from Ashley Helme Associates Ltd
 3. Subject to detailed design
 4. Based upon topographical survey



Key:

	Existing road markings
	Proposed kerbline
	Proposed road markings
	Proposed tactile paving
	Existing footway
	Proposed 2.0m wide footway
	Existing grass verge
	Proposed grass verge
	Proposed 3.0m wide shared footway/cycleway
	Proposed 2.0m wide cycle bypass
	National Cycle Network Route 5
	2.4m x 40m visibility splay
	50m forward visibility splay to beacon

Indicative car park location to provide approximately 34no car parking spaces. Details to be agreed at Reserved Matters Stage.

Close existing access to Banbury Cricket Club. Vehicular access relocated to Site access road. Maintain pedestrian access in this location.

Rev	Description	Date
E	Amendments to car park	20.04.16
D	Amendments in response to comments from landscape officer at C&SNC	22.03.16
C	Additional spaces in car park at CDC request	25.01.16
B	Amendments in response to Stage 1 RSA	21.12.15
A	Introduce zebra crossing	30.11.15

Project	LAND TO THE WEST OF WHITE POST ROAD, BANBURY	Client	GLADMAN DEVELOPMENTS LTD	Drawing No	1361/22	Rev	E
Title	PROPOSED ACCESS ARRANGEMENTS	Date	SEPT 2015	Scale	1:500@A2	 76 washway road, sale, manchester, m33 7re e:aha@ashleyhelme.co.uk t:0161 972 0552 f:0161 972 0553	

This page has been
left intentionally
blank