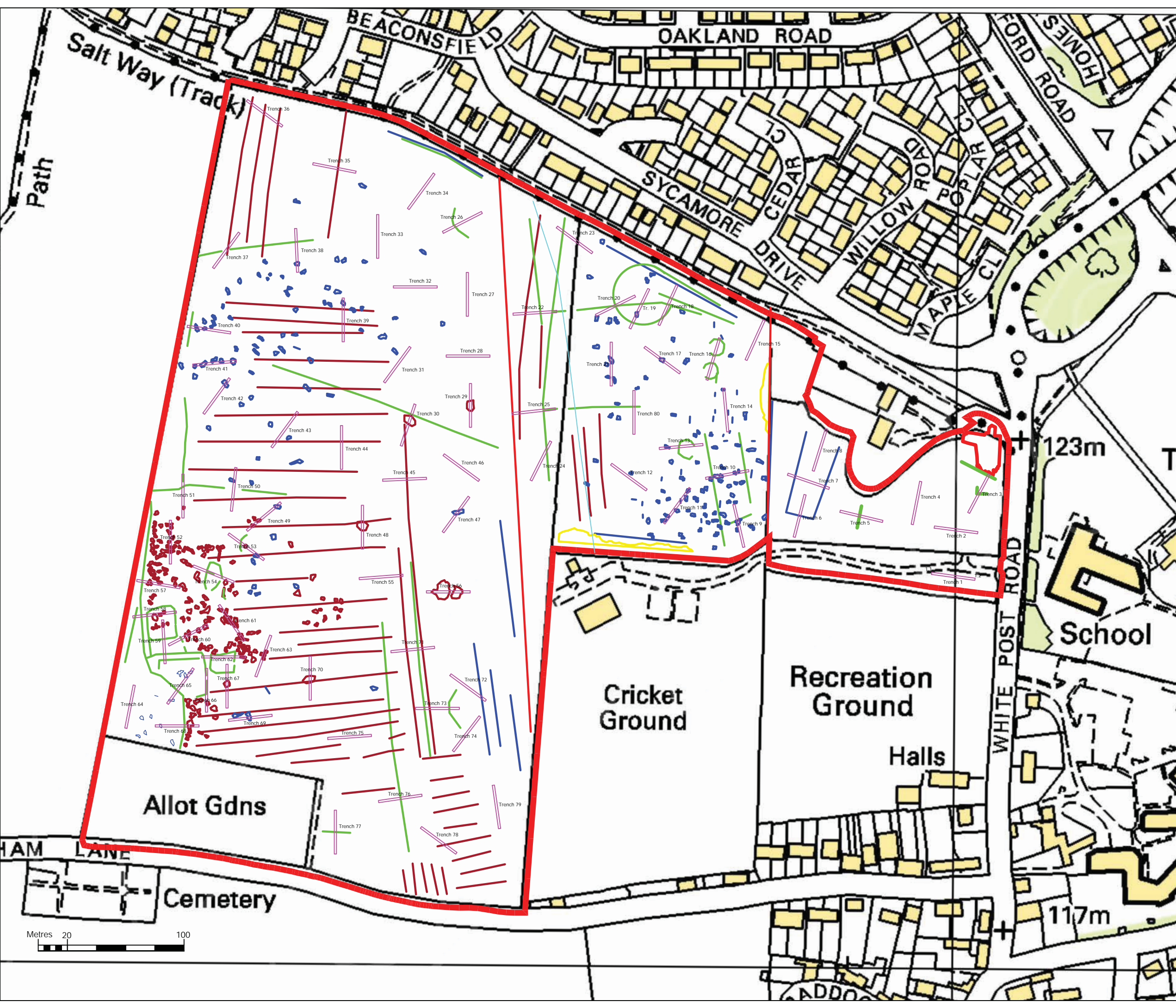


Title: Plan of Trench Locations and Geophysical Anomalies
Scale: 1:2500
Drawn: RL

Key:



123m

School

Cricket Ground

Recreation Ground

Halls

Allot Gdns

Cemetery

117m



Copyright/ Licencing
This Drawing
© A.R.S. Ltd

Ordnance Survey data if applicable
© Crown Copyright, all rights reserved
reproduction with permission.
Licence No. 100045420

This page has been
left intentionally
blank

Archaeologically Significant Trenches



Figure. 3- SSW facing view of Trench 3 (Scale- 2 x 2m)



Figure 4- NW facing view of linear F.304 (Scale 1 x 1m)



Figure 5- NW facing view of linear F.306 (Scale- 1 x 1m)



Figure 6- N-facing view of Trench 6 (Scale- 2 x 2m)



Figure 7- W-facing view of pit F.604 (Scale- 1 x 0.2m)



Figure 8- E-facing view of linear F.607 (Scale- 1 x 1m)



Figure 9- N-facing view of pit/linear terminus F.609. Note modern land drain in the background
(Scale- 1 x 1m)



Figure. 10 – S-facing view of Trench 8 (Scale- 2 x 2m)



Figure. 11- W-facing view of pit F.804 (Scale- 1 x 0.2m)



Figure. 12- NE facing view of Trench 11 (Scale- 2 x 2m)



Figure. 13- NW facing view of pit/posthole F1104 (Scale- 1 x 0.2m)



Figure. 14- NNE facing view of pit/posthole F.1106 (Scale- 1 x 0.2m)



Figure. 15- WSW facing view of Trench 13 (Scale- 2 x 2m)



Figure. 16- NNW facing view of linear terminus F.1304 (Scale- 1 x 1m)



Figure. 17- S-facing view of linear F.1306 (Scale- 1 x 1m)



Figure. 18- N-facing view of pit F.1308 (Scale- 1 x 0.2m)



Figure. 19- SW-facing view of Trench 16 (Scale- 2 x 2m)



Figure. 20- WNW facing view of F.1606 (Scale- 1 x 2m)



Figure. 21- SSW facing view of linear F.1606. Note truncating posthole F.1609 visible at southern edge of linear F.1606 (Scale- 1 x 1m)



Figure. 22- SW facing view of posthole F.1609



Figure. 23- NE facing view of Trench 18 (Scale 2 x 2m)



Figure. 24- E-facing view of F.1804 (Scale- 1 x 1m)



Figure. 25- NNE facing view of Trench 19 (Scale- 2 x 2m)



Figure. 26- SSE facing view of linear F.1905 (Scale – 1 x 1m)



Figure. 27- W-facing view of linear F.1908 (Scale- 1 x 1m)



Figure. 28- SW facing view of Trench 20 (Scale- 2 x 2m)