

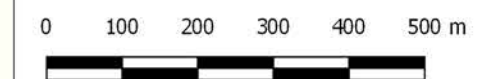
**Figure 1: Archaeological Remains**

- Red Line Boundary
- 1km Study Area

**Archaeological Remains**

- ★ Archaeological Remains (points)
- Archaeological Remains (lines)
- Archaeological Remains (areas)

Information based upon Historic Environment Record Data © Oxfordshire County Council



Site name/code: Salt Way, Banbury  
 Date: July 2015  
 Drawn by: MB  
 Scale: 1:10,000 @ A3

This drawing: © ARS Ltd  
 Contains Ordnance Survey data.  
 © Crown copyright and database right  
 2015

**Archaeological Research Services Ltd**  
 Angel House  
 Portland Square  
 Bakewell  
 Derbyshire  
 DE45 1HB

Tel: 01629 814540  
 Fax: 01629 814657  
[www.archaeologicalresearchservices.com](http://www.archaeologicalresearchservices.com)

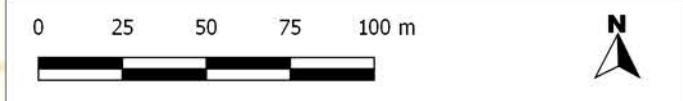


This page has been  
left intentionally  
blank

**Figure 2: Archaeological Remains with Geophysical Survey Results**



- Red Line Boundary
- 1km Study Area
  
- Archaeological Remains**
- ★ Archaeological Remains (points)
- Archaeological Remains (areas)
  
- Geophysical Anomalies**
- Discrete bipolar anomalies
- Discrete positive anomalies
- Negative linear anomalies
- Geophysics - linears
  
- Trench Locations**
- Sterile Trench
- Unexcavated Trench
- Archaeology Recorded



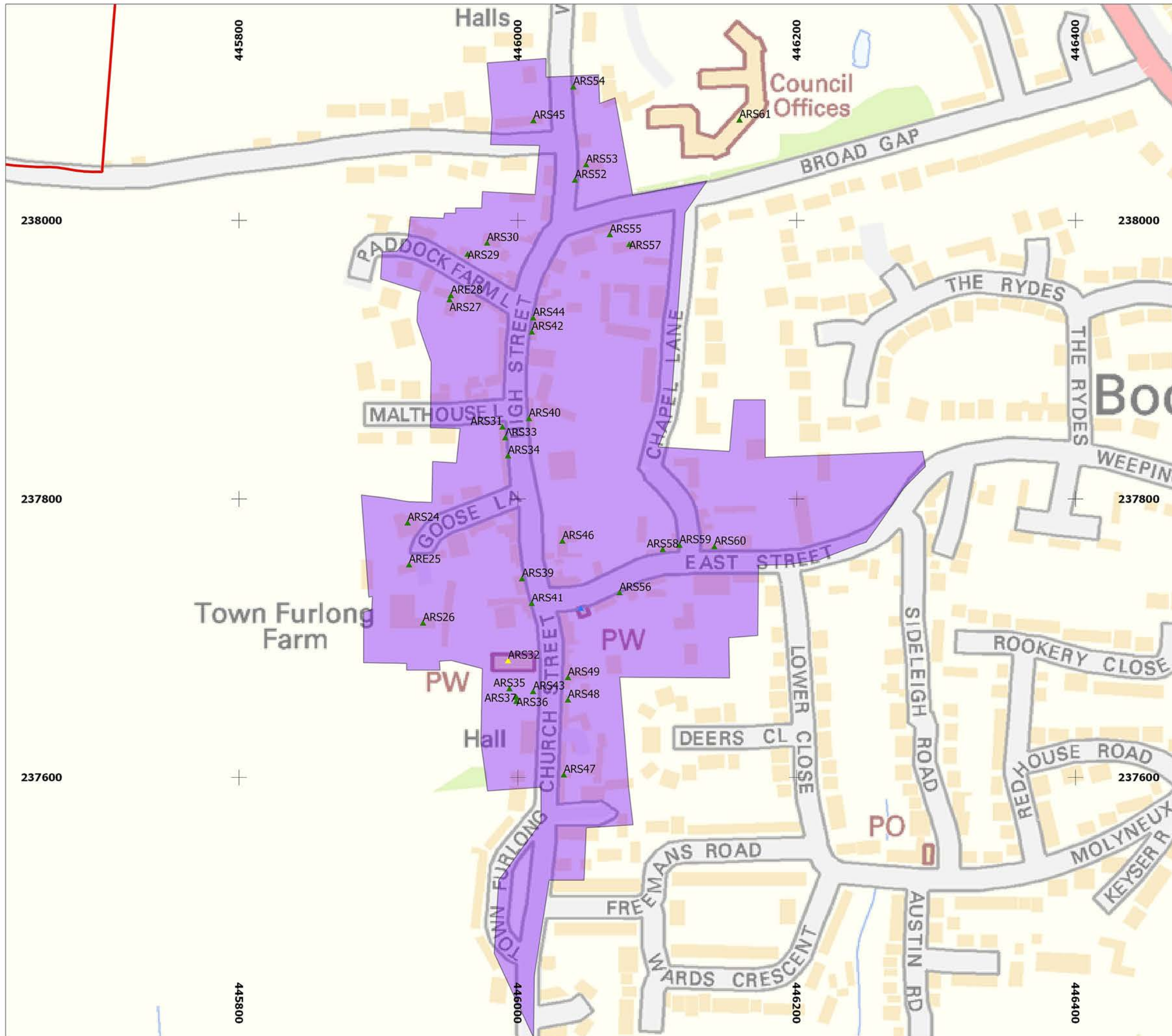
Site name/code: Salt Way, Banbury  
 Date: July 2015  
 Drawn by: MB  
 Scale: 1:2250 @ A3

This drawing: © ARS Ltd  
 Contains Ordnance Survey data.  
 © Crown copyright and database right  
 2015

**Archaeological Research Services Ltd**  
 Angel House  
 Portland Square  
 Bakewell  
 Derbyshire  
 DE45 1HB  
 Tel: 01629 814540  
 Fax: 01629 814657  
 www.archaeologicalresearchservices.com



This page has been  
left intentionally  
blank

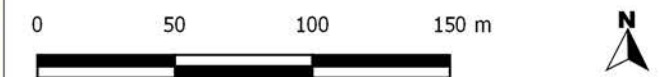


**Figure 3: Bodicote Conservation Area**

- Bodicote Conservation Area
- Grade II listed building
- Grade II\* listed building

Information based upon Historic Environment Record Data © Oxfordshire County Council and © Historic England 2014. Contains Ordnance Survey data. © Crown copyright and database right 2014. The Historic England GIS data contained in this material was obtained on 3.10.14.

The most up to date Historic England GIS data can be obtained from <http://www.historic-england.org.uk>



Site name/code: Salt Way, Banbury  
 Date: July 2015  
 Drawn by: MB  
 Scale: 1:2750 @ A3

**Archaeological Research Services Ltd**  
 Angel House  
 Portland Square  
 Bakewell  
 Derbyshire  
 DE45 1HB



This drawing: © ARS Ltd

Contains Ordnance Survey data.  
 © Crown copyright and database right 2015.

Tel: 01629 814540  
 Fax: 01629 814657  
[www.archaeologicalresearchservices.com](http://www.archaeologicalresearchservices.com)

This page has been  
left intentionally  
blank