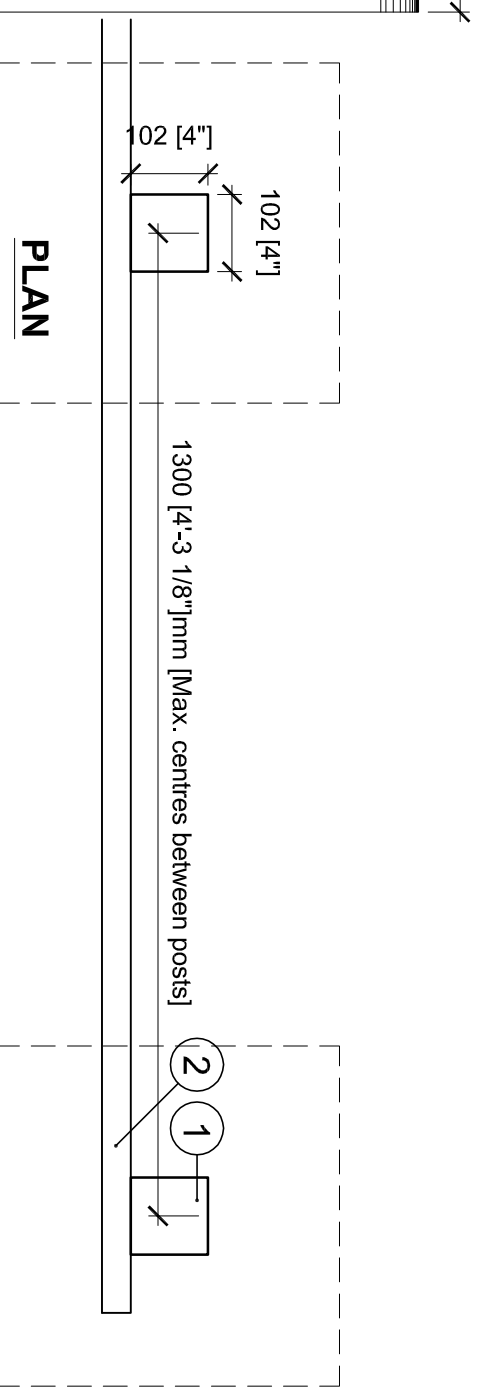
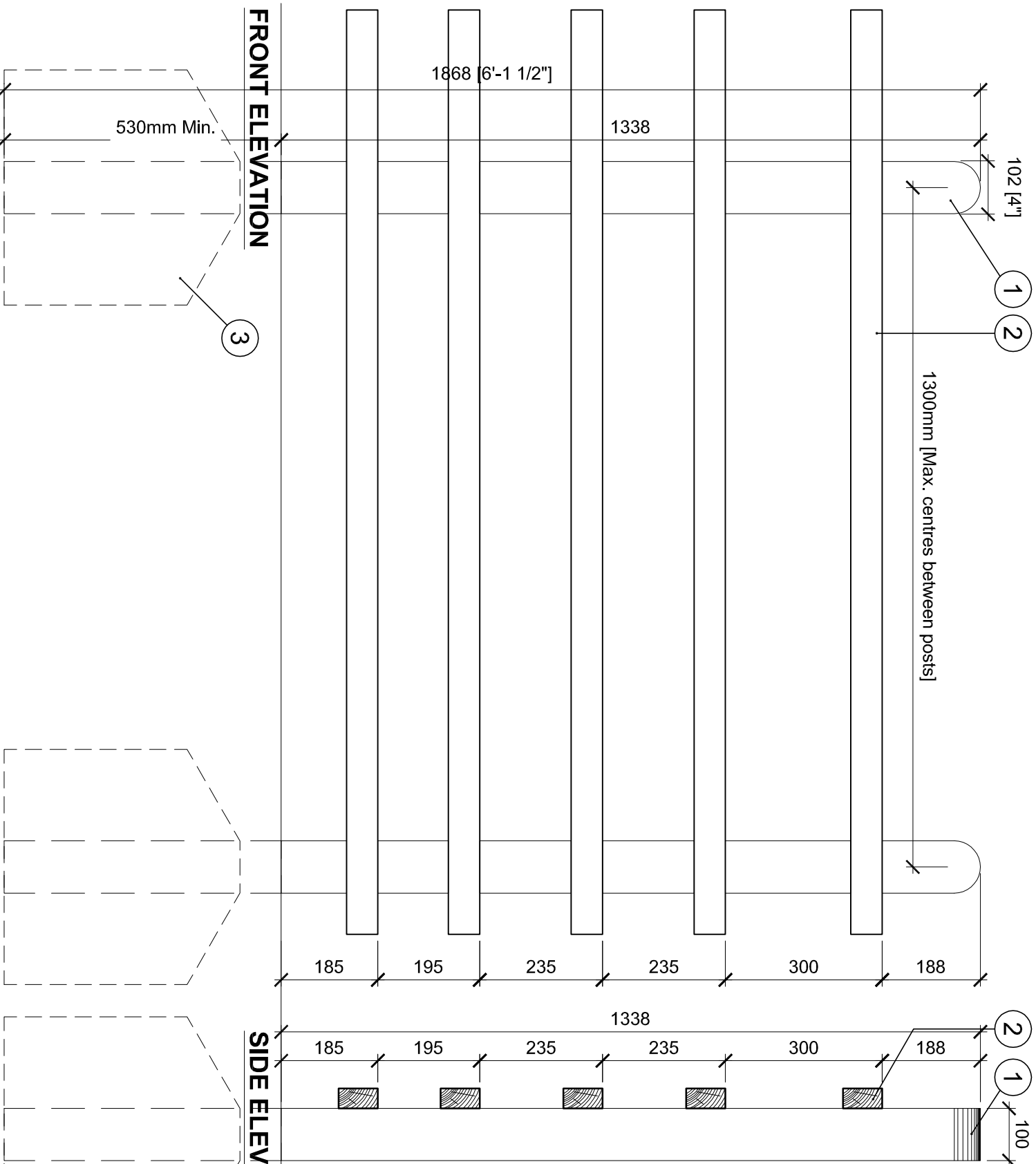


- The contractor is responsible for checking dimensions, tolerances and references. Any discrepancy to be verified with the Architect before proceeding with the works.
- Where an item is covered by drawings to different scales the larger scale drawing is to be worked to.
- Do not scale drawing. Figured dimensions to be worked to in all cases.



PLAN

1. 102x102mm [4"x4"] tanalised timber posts at Max. 1300mm ctrs in accordance to BS 1722 part 5 with rounded top
2. 75 x 38mm timber rails from tanalised timber. fixed to timber posts with galvanised nails
3. Post to be set 500mm into ground with 400 x 400 x 350mm lean mix concrete surround.

Timber to be spruce, Douglas fir or hemlock & vacuum treated with preservative in accordance with BS 5589.
Timber to be finished with 2 coats brush applied preservative finish Sadolins classic colour to manufacturer's recommendations.

FRONT ELEVATION

SIDE ELEVATION

date	rev	revision/author/checker	drawn	JW	checked	MDB	project	NW BICESTER EXEMPLAR DEVELOPMENT	purpose of issue	PLANNING	
27.06.2013	-	First Issue: jsw	scale @	A3 1:10	date	Dec 2012	drawing	FENCE DETAILS Timber post & rail fence	drawing no	AA2699C/1.3/058	
			PRP Architects ©	10 Lindsey Street	London	EC1A 9HP	T +44 (0)20 7653 1200	F +44 (0)20 7653 1201	lon.prp@prparchitects.co.uk	rev	-

