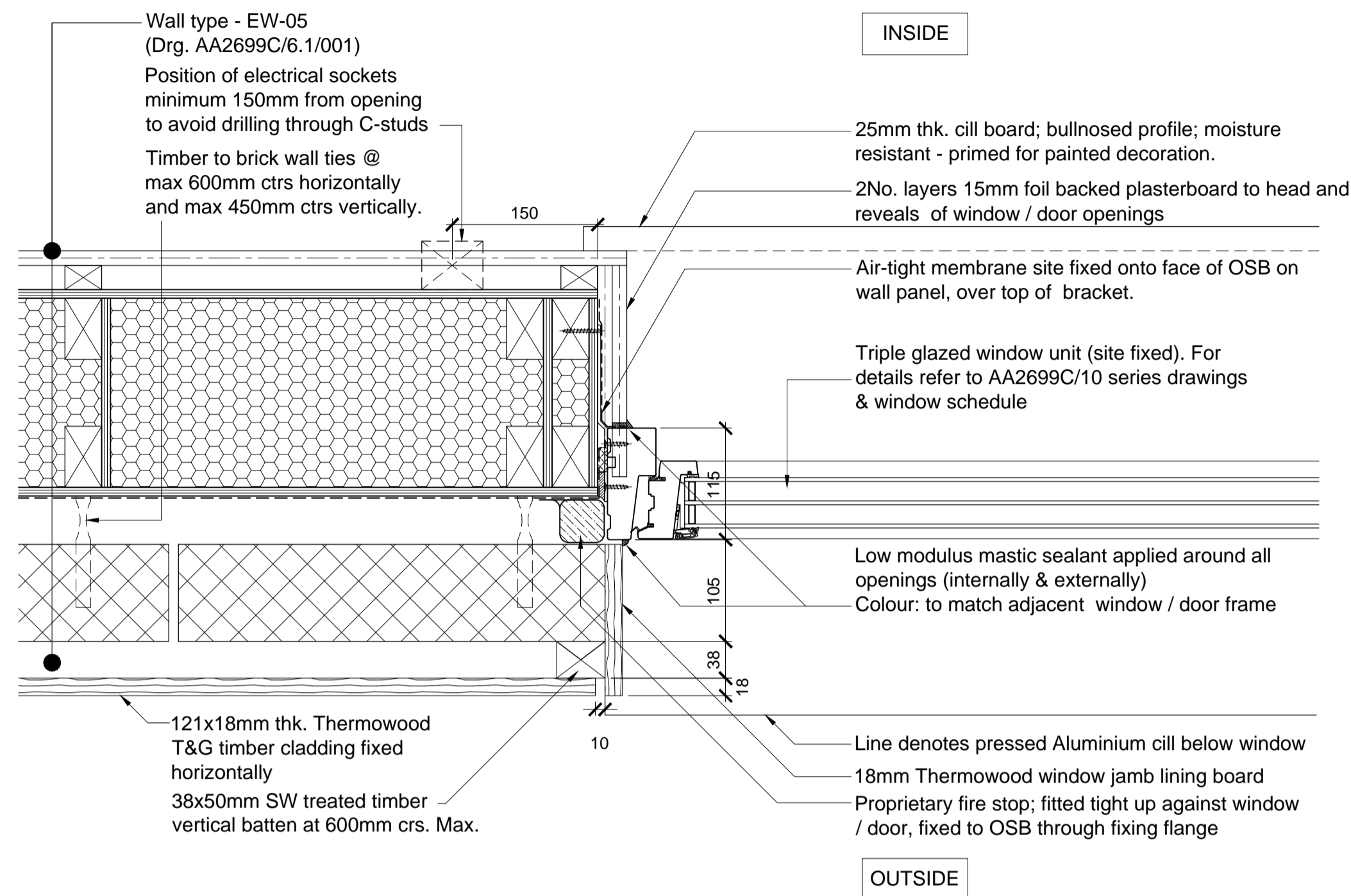
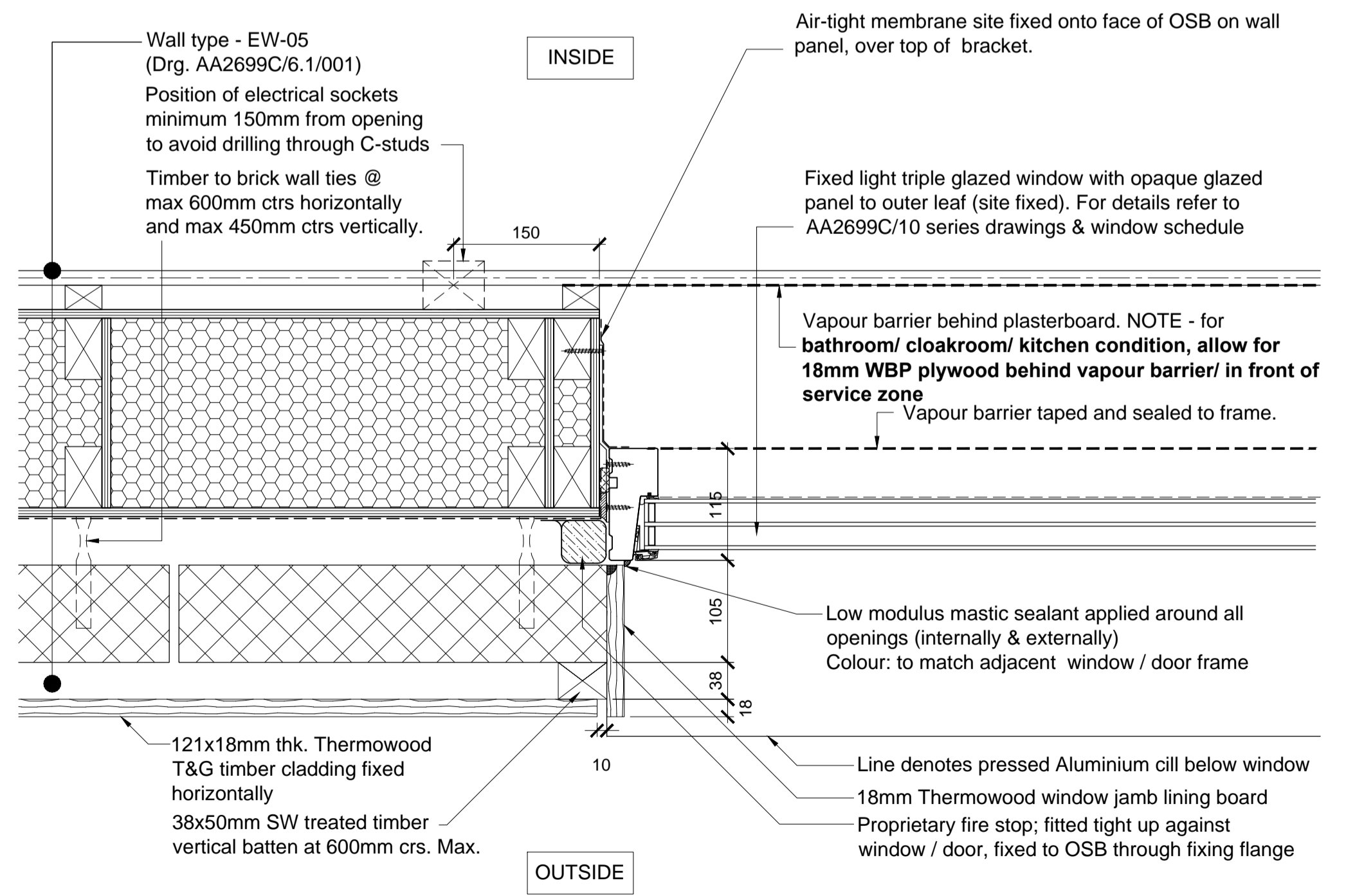


KEY ELEVATION  
TYPE - 3



02 Window Jamb Detail 2 (1st Floor)  
Type 3 - Timber / Render



01 Window Jamb Detail 1 (1st Floor)  
Type 3 - Timber / Render

**ROOF FINISH**  
 Marley Rivendale or Bekstone tiles as applicable;  
 Fixed in accordance with manufacturers recommendations to 25x38mm SW treated battens (25x50mm for some tiling where required - refer to supplier)

Dashed line denotes Traditional breathable roofing underlay to B.S.743; Tyvek 'Supro' + tape.

Trussed rafters at 600mm centres

9mm OSB closure piece

Dashed line denotes Reflective breather paper lapped up and stapled to OSB closure piece

Eaves ventilator

Deep flow type gutter as per external materials schedule and 65mmØ rain water down pipes

175mm deep PVCu fascia fixed on to truss feet with 'Polytop' nails at max 600mm centres with PVCu soffit board

Top of coursing 5195mm

100mm Blockwork

121x19mm thk. Thermowood T&G timber cladding fixed horizontally

Compressible sealant strip applied around all openings

20mm thk. packer

Insect mesh fitted to top and bottom of vented cavity

Pressed metal head flashing with powder coated finish; Colour: Grey RAL 7015

Matching Thermowood timber cladding fixed to head and reveals of openings (where applicable)

Low modulus mastic sealant applied around all openings (internally & externally) Colour: to match adjacent window / door frame.

Fixed light triple glazed window with opaque glazed panel to outer leaf (site fixed). For details refer to AA2699C/10 series drawings & window schedule

20mm thk. cill packer, to sit behind drip, cill adjusted to suit

Compressible mastic

Compressible sealant strip

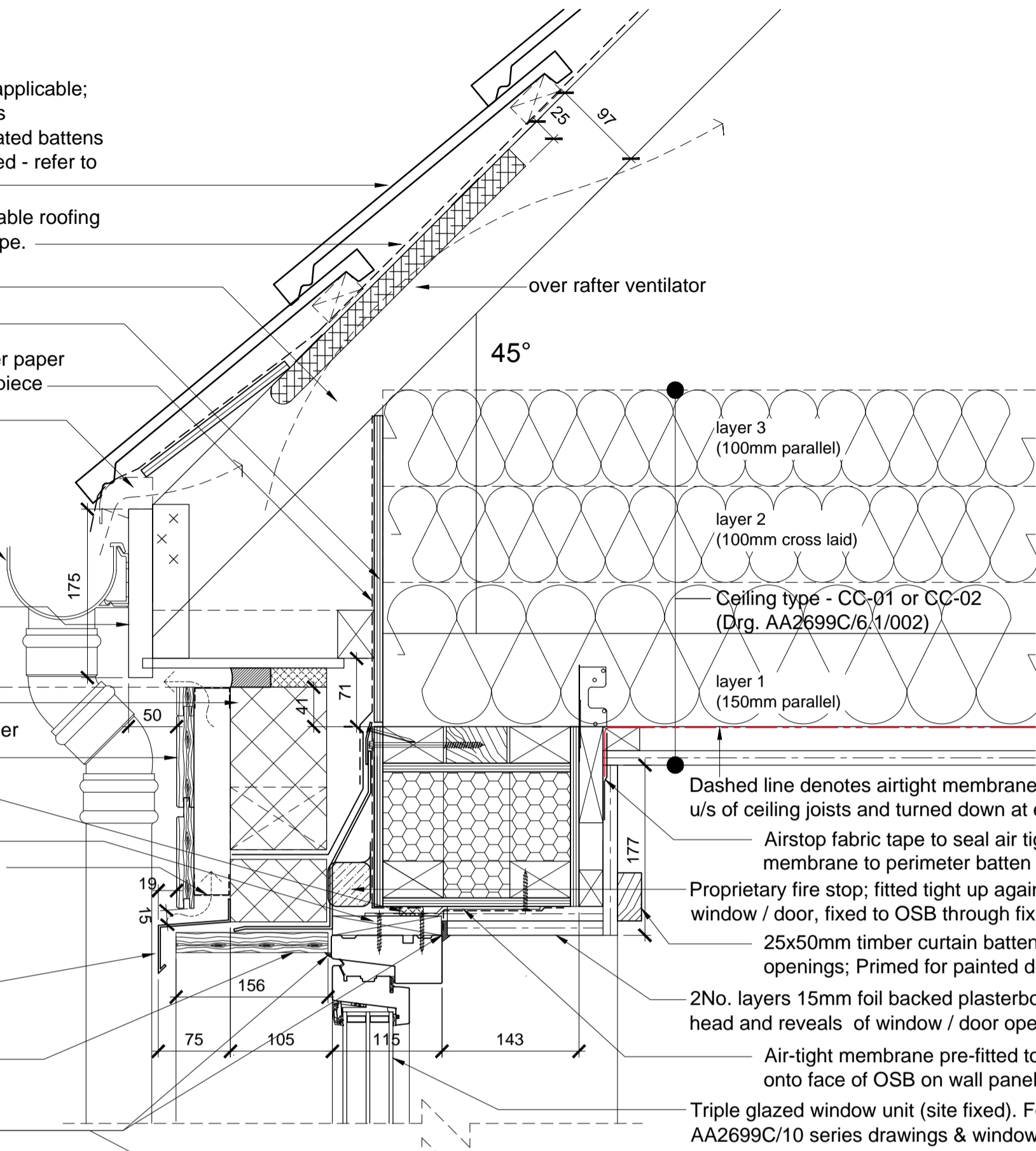
Pressed metal cill with upstand ends

Air gap with insect mesh

Proprietary fire stop; fitted tight up against window / door, fixed to OSB through fixing flange

38x50mm SW treated timber vertical batten at 600mm crs. Max.

121x19mm thk. Thermowood T&G timber cladding fixed horizontally



03 Window Section Detail (1st Floor)  
Type 3 - Timber / Render

03-03-2015	B	Amended to WDH comments. Issued for construction; cl rs
15-01-2014	A	Details updated; JW/MD
09-12-2013	-	First issue; JW/MD

date	rev	revision/author/checker
------	-----	-------------------------

purpose of issue	CONSTRUCTION
project	BICESTER ECO TOWN EXEMPLAR SITE
drawing	DETAILS TYPE 3 DWELLINGS [ Timber / Render ] Sheet 7

drawing no	AA2699C 6.1 066	rev	B
------------	-----------------	-----	---

drawn	TL	checked	MDB
scale @ A1	1:5	date	Nov 2013