

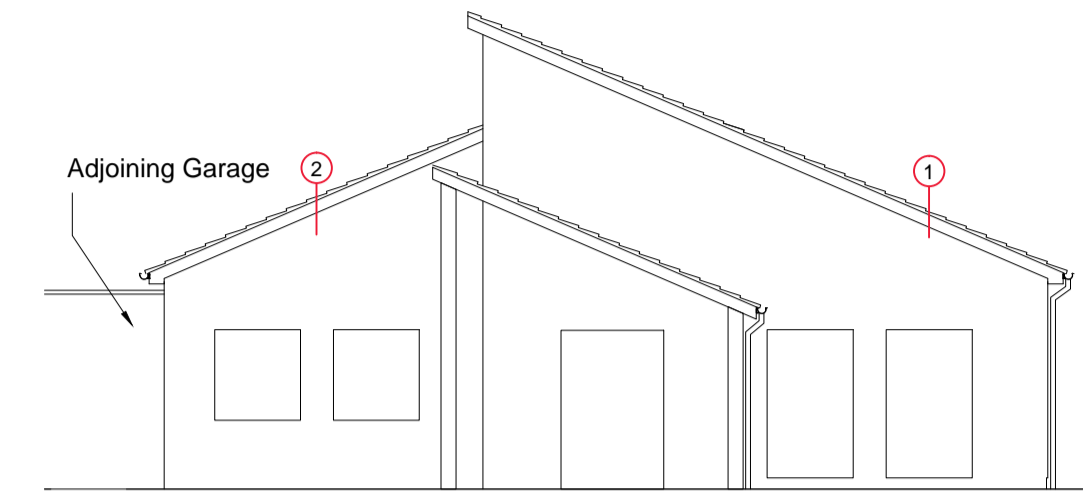
WILLMOTT DIXON HOUSING REVIEWED	
PRELIMINARY	STATUS
FOR COMMENT	A
FOR CONSTRUCTION	B
SIGNED	C
DATE	

notes

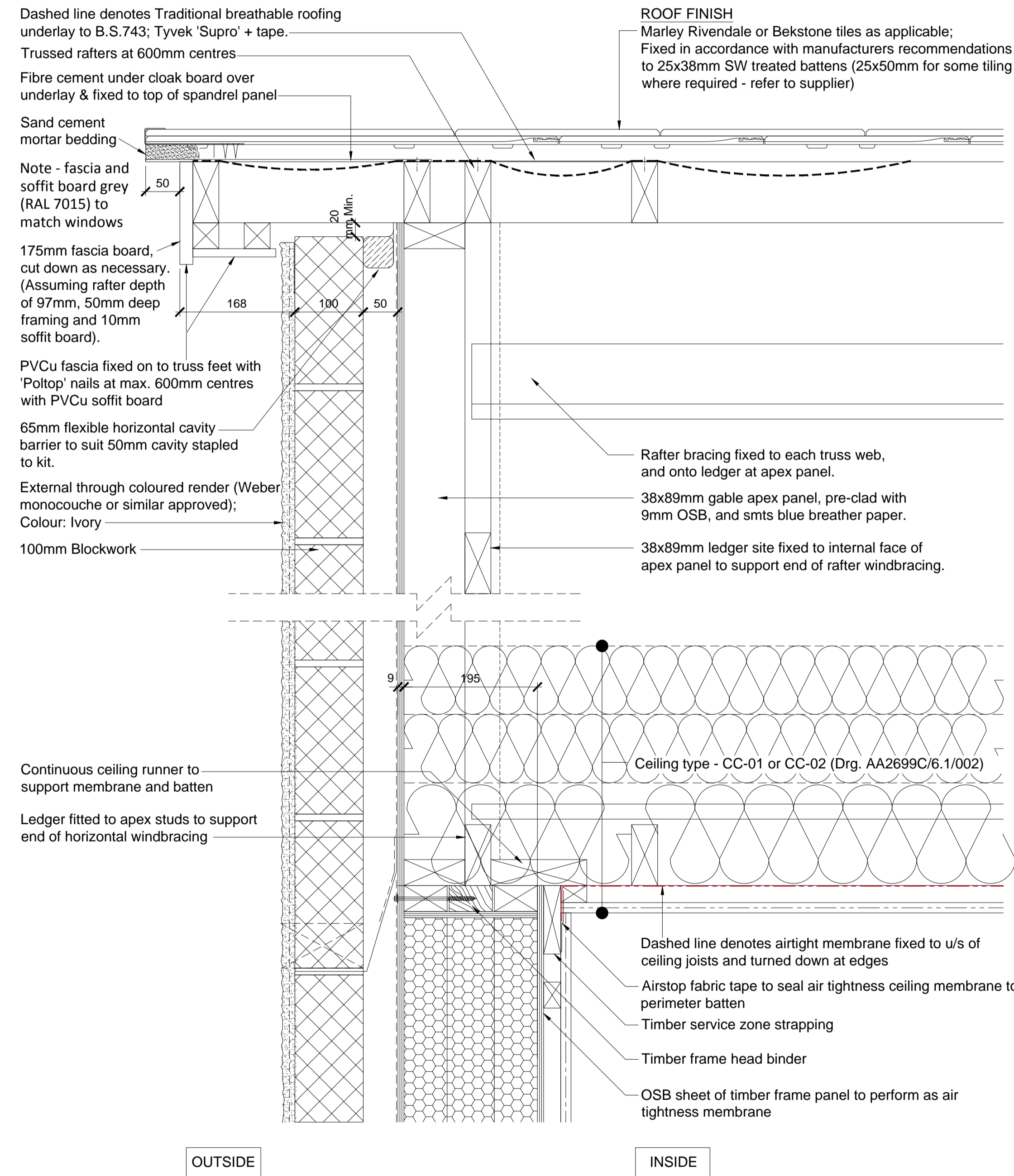
- The contractor is responsible for checking dimensions, tolerances and references. Any discrepancy to be verified with the Architect before proceeding with the works.
- Where an item is covered by drawings to different scales the larger scale drawing is to be worked to.
- Do not scale drawing. Figured dimensions to be worked to in all cases.

CDM Regulations 2007

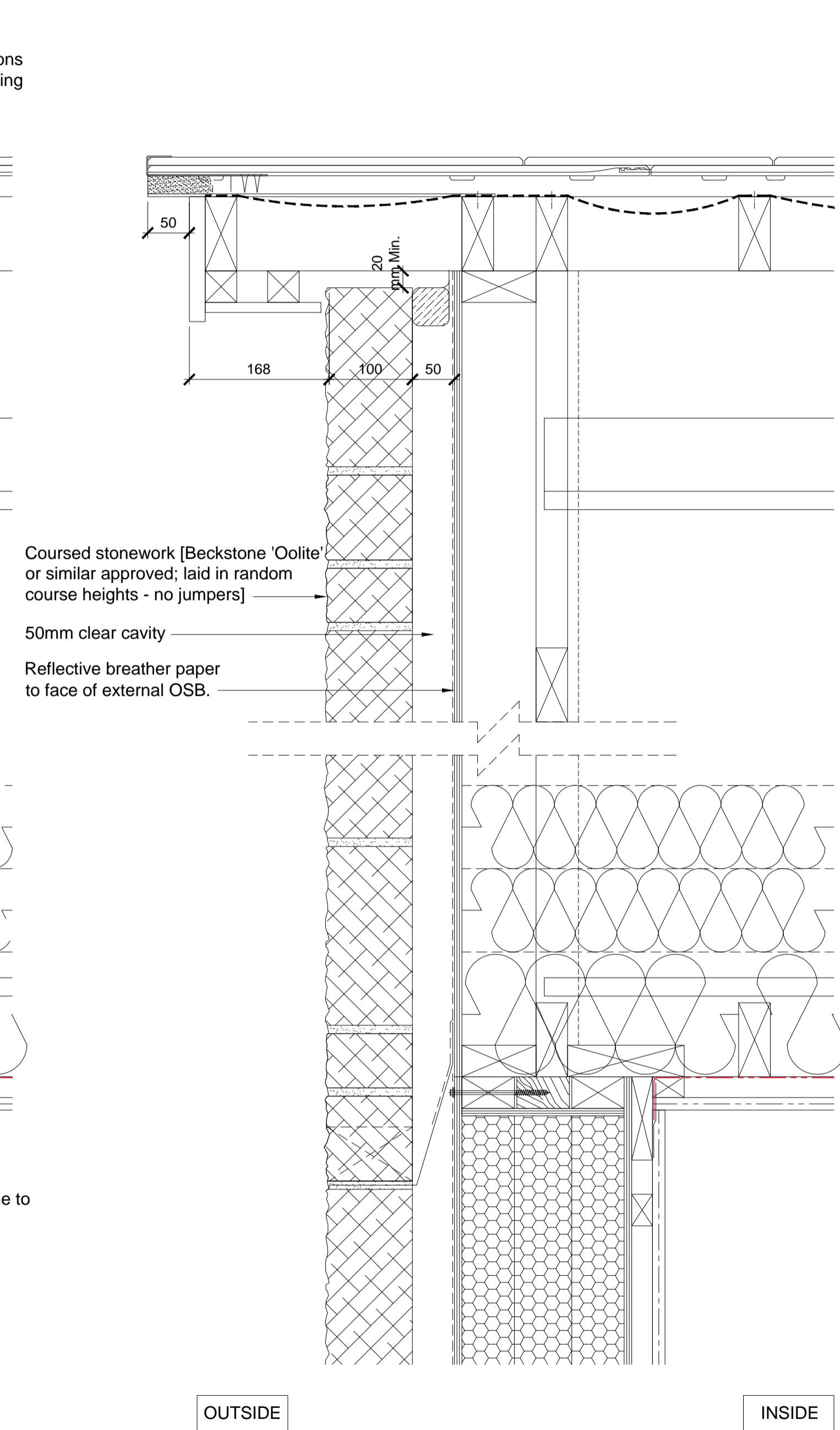
ALL current drawings and specifications for the project must be read in conjunction with the Designer's Hazard and Environmental Assessment Record.



KEY ELEVATION
TYPE - 8



01 Verge Detail - Render
Type 8 - Bekstone / Render



02 Verge Detail - Bekstone
Type 8 - Bekstone / Render

07-04-2015	B	Details updated in line with WDH comments; IM/CCL
15-01-2014	A	Details updated; JW/MD
09-12-2013	-	First issue; JW/MD

date	rev	revision/author/checker
------	-----	-------------------------

purpose of issue
CONSTRUCTION

project
**BICESTER ECO TOWN
EXEMPLAR SITE**

drawing
**DETAILS
TYPE 8 DWELLINGS
[Bekstone / Render] Sheet 7**

drawing no	rev
AA2699C 6.1 096	B
drawn TL	checked
scale @ A1 1:5	date Nov 2013

PRP Architects ©
10 Lindsey Street
London
EC1A 9HP

T +44 (0)20 7653 1200
F +44 (0)20 7653 1201
lon.prp@prparchitects.co.uk