

WILLMOTT DIXON HOUSING
REVIEWED

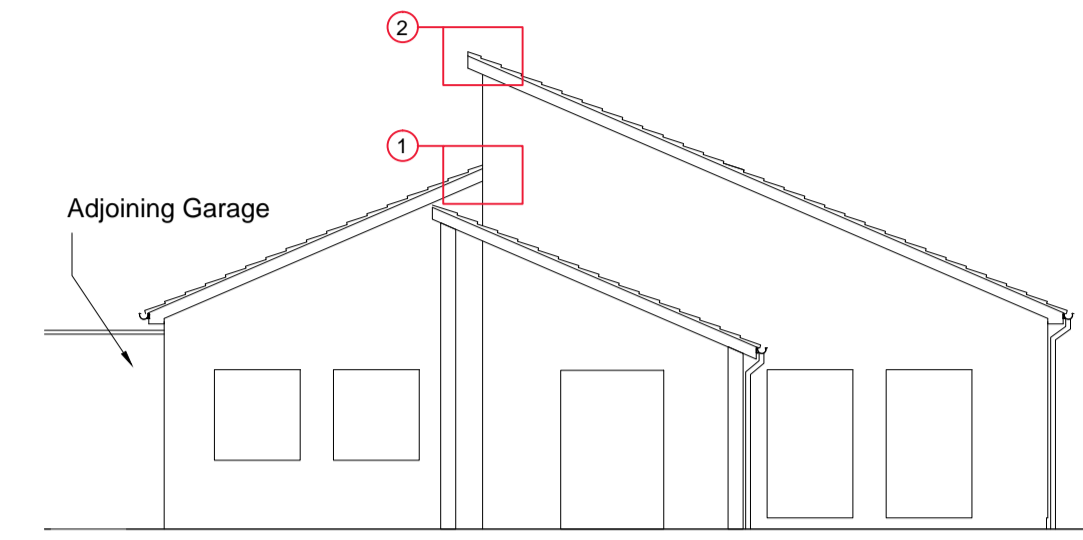
PRELIMINARY	STATUS
FOR COMMENT	A
FOR CONSTRUCTION	B
SIGNED	C
DATE	

notes

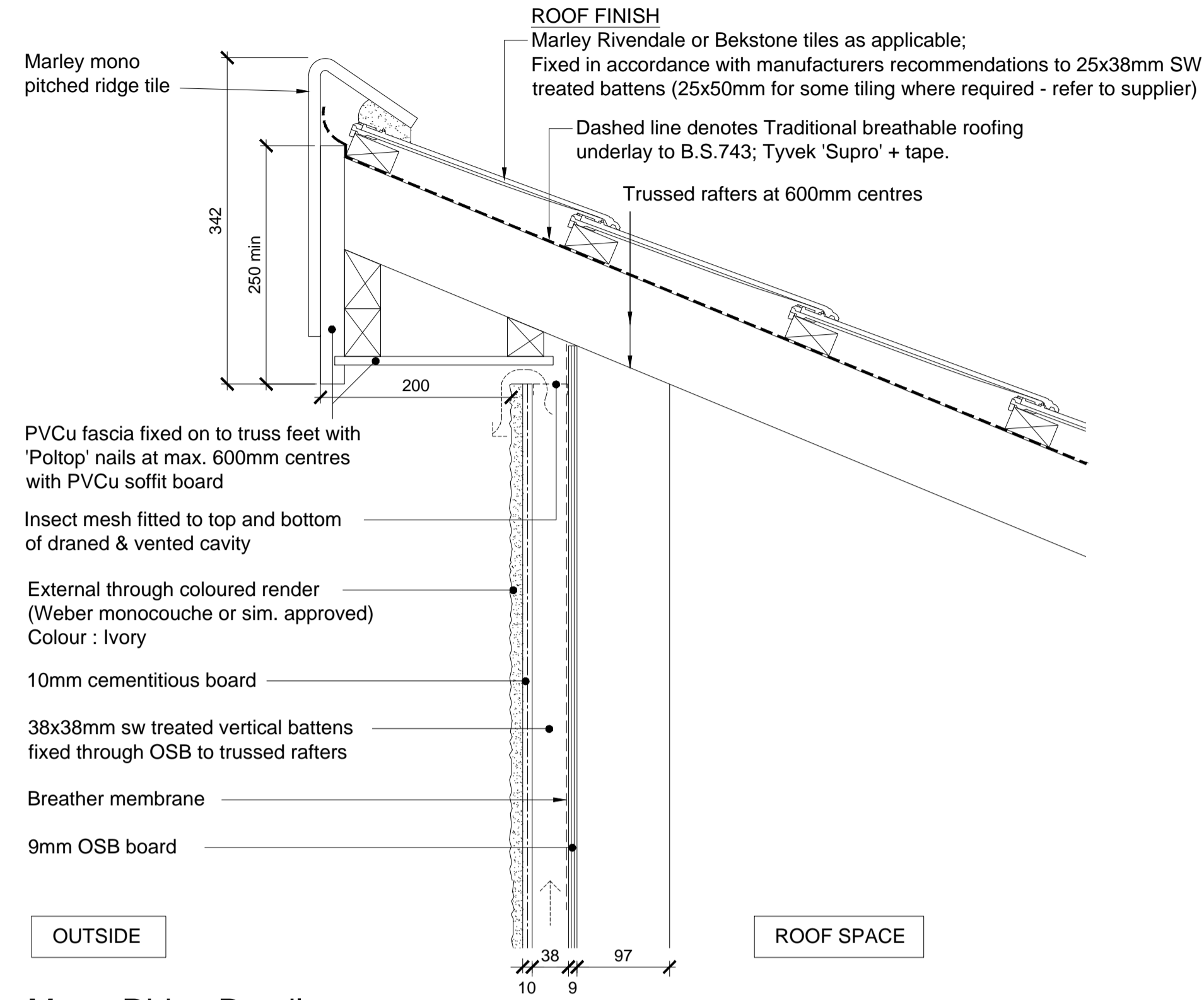
- The contractor is responsible for checking dimensions, tolerances and references. Any discrepancy to be verified with the Architect before proceeding with the works.
- Where an item is covered by drawings to different scales the larger scale drawing is to be worked to.
- Do not scale drawing. Figured dimensions to be worked to in all cases.

CDM Regulations 2007

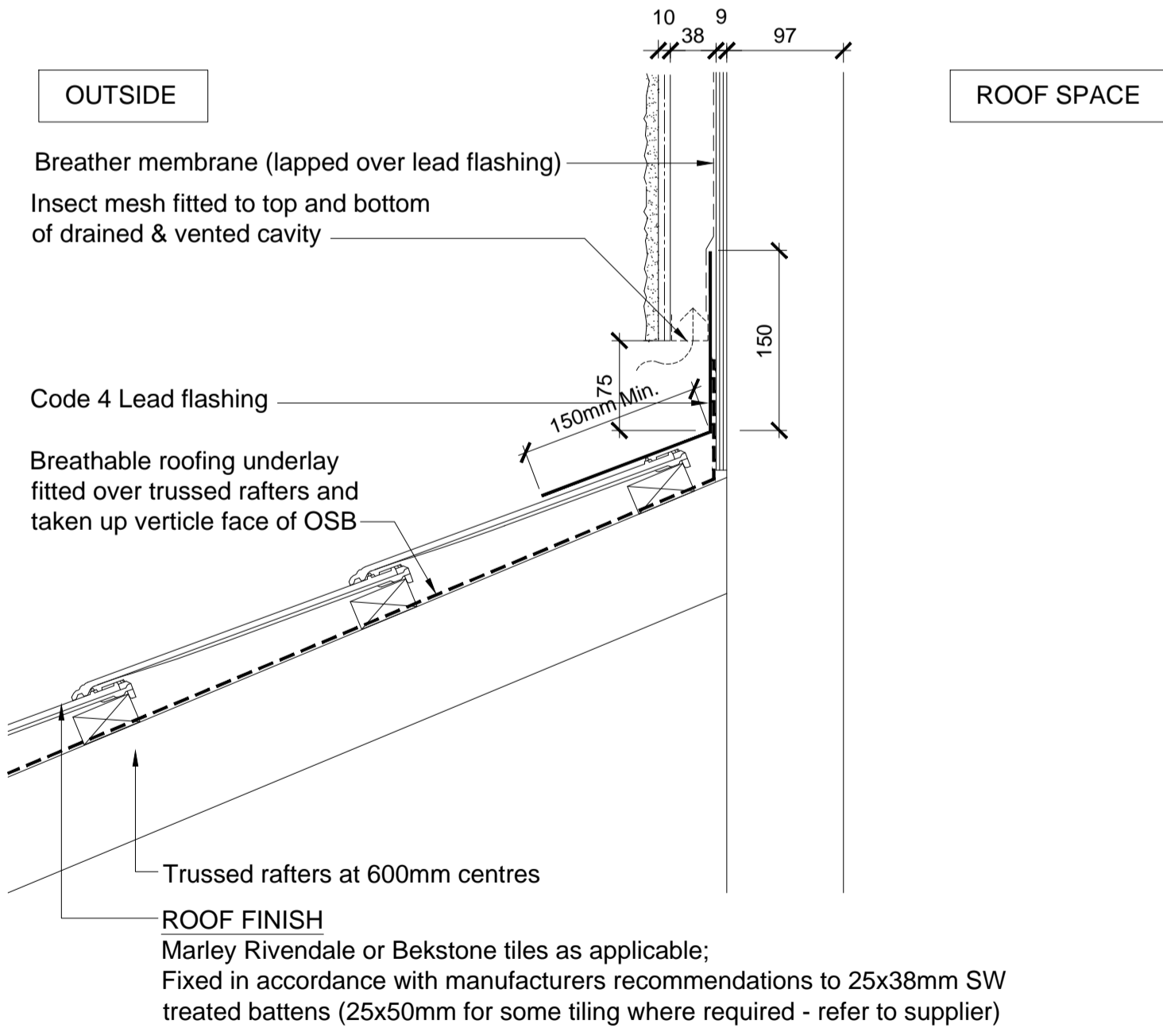
ALL current drawings and specifications for the project must be read in conjunction with the Designer's Hazard and Environmental Assessment Record.



KEY ELEVATION
TYPE - 8



02 Mono-Ridge Detail
Type 8 - Bekstone / Render



01 Roof Abutment Detail
Type 8 - Bekstone / Render

07-04-2015	B	Details updated in line with WDH comments; IM/CL
15-01-2014	A	Details updated; JW/MD
09-12-2013	-	First issue; JW/MD

date	rev	revision/author/checker
------	-----	-------------------------

purpose of issue	CONSTRUCTION
project	BICESTER ECO TOWN EXEMPLAR SITE
drawing	DETAILS TYPE 8 DWELLINGS [Bekstone / Render] Sheet 8

drawing no	AA2699C 6.1 097	rev	B
drawn	TL	checked	
scale @ A1	1:5	date	Nov 2013

PRP Architects ©
10 Lindsey Street
London
EC1A 9HP

T +44 (0)20 7653 1200
F +44 (0)20 7653 1201
lon.prp@prparchitects.co.uk