

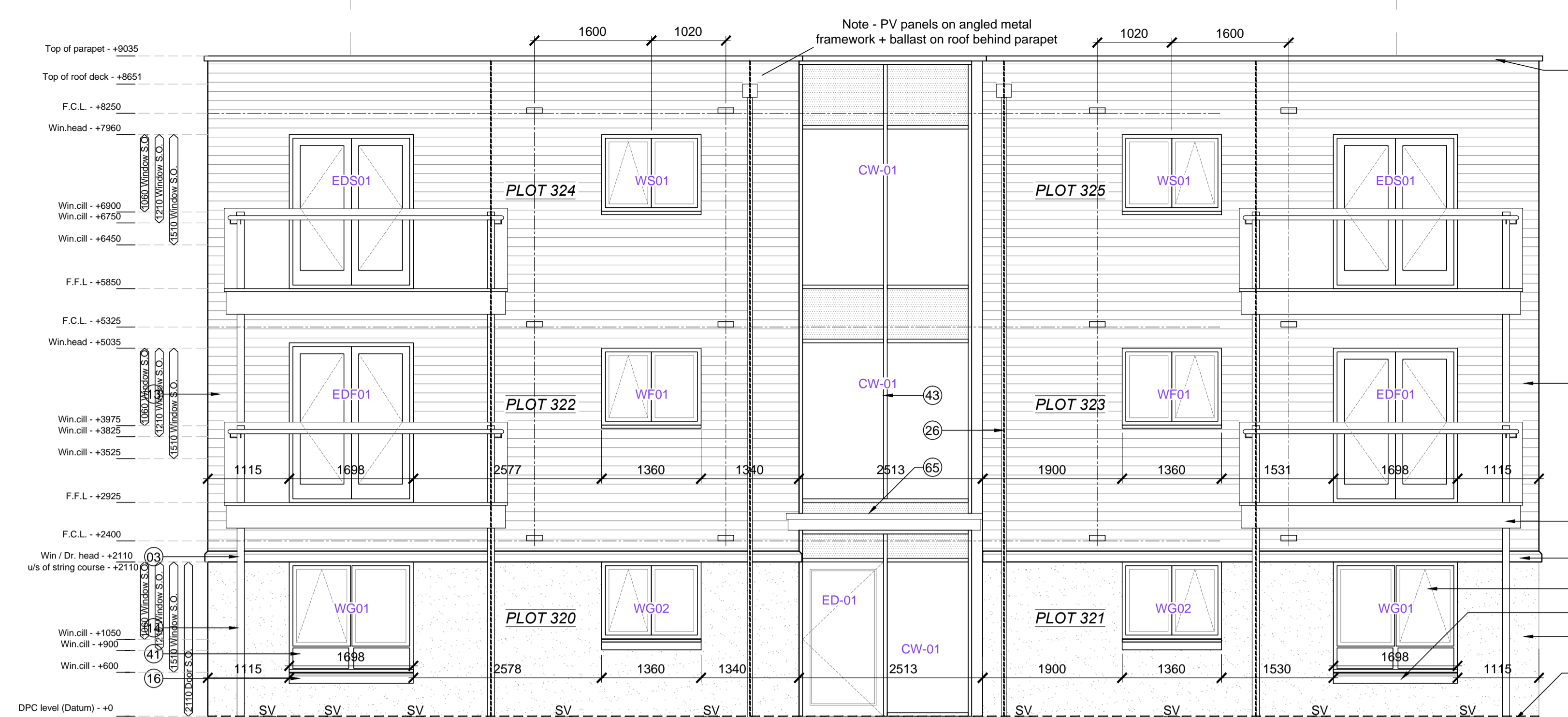
Side 1 Elevation
0 1 2 3 4 5 10

WINDOW SCHEDULE [EXTRACT]

Plots numbers	Dwelling type	Tenure	Elevation type	Window number	Door number	Fire egress	Fire rated glass	Safety glass	Obscured glass	SBD compliance	Blank panel in look a like glass	Structural window opening	Plots with extra window for end of terrace	COMMENTS	
320,370	1B2P-F [A1-A]	Affordable	7-[A1-A]	W*-01 W*-02	ED*-01					✓		width 1698 x 1360 x	Height 2110 1060	living kitchen	NOTE: All opening casements to be lift and turn, opening upwards. To be site fixed. Home's compliant operating hands to be 1200mm above floor.
321,371	2B3P-F [A2-A]	Affordable	7-[A2-A]	W*-01 W*-02 W*-03 W*-04	ED*-01					✓		width 1698 x 1360 x 1335 x	Height 2110 1510 1210 1210	living bedroom 1 kitchen bedroom 2 living	NOTE: floor on draw rgs. G:Ground Floor, P:First, S:Second. French windows
322,323,324,325,372,373,374,375	2B3P-F [A2-B]	Affordable	7-[A2-B]	W*-01 W*-02 W*-03 W*-04 W*-05	ED*-01					✓		width 1698 x 1360 x 1060 x 1060 x 1335 x 1335 x	Height 2110 1060 1060 1060 1510 1510	living/dining kitchen bedroom 2 bedroom 1 bedroom 1 living/dining	NOTE: floor on draw rgs. G:Ground Floor, P:First, S:Second. French windows to side of app' block to side of app' block

Plots numbers	Dwelling type	Tenure	Elevation type	Window number	Door number	Fire egress	Fire rated glass	Safety glass	Obscured glass	SBD compliance	Blank panel in look a like glass	Structural window opening	Plots with extra window for end of terrace	COMMENTS
				WC-01	ED-02					✓		width 1585 x 1585 x 1585 x 1698 x	Height 2110 1210 1210 2110	Front door side light Rear door 1st Fir landing 2nd Fir landing Cycle store

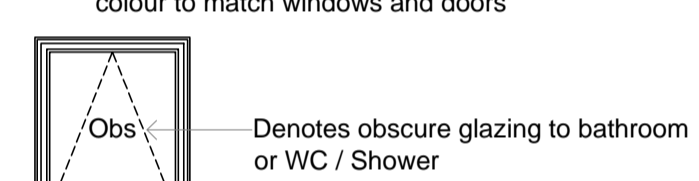
*For curtain wall glazing please refer to drawing AA2699C/10.1/ 001



Front Elevation

KEY TO MATERIALS & DETAILS

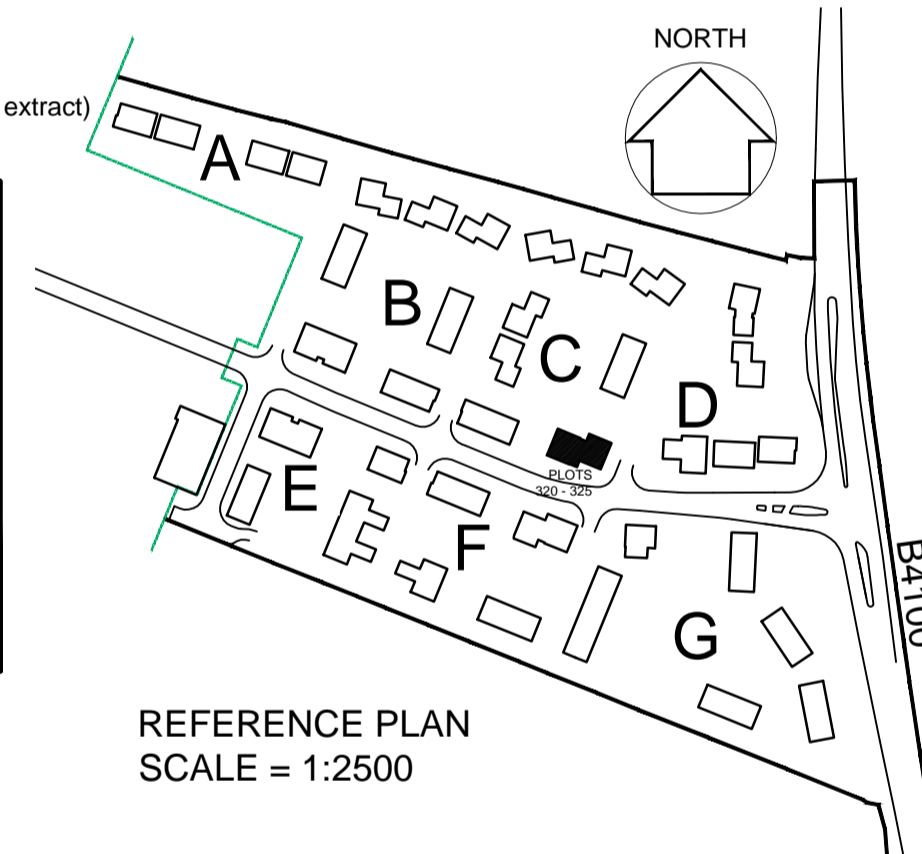
- 03 Projecting reconstituted stone string course [colour: Portland] to divide Beckstone below from render above.
- 07 2No. course engineering quality brick below DPC, with natural colour mortar joints. [Ibstock 'Capital Multi Stock']
- 13 Horizontal timber cladding [Thermowood; with natural untreated finish]
- 14 Through colour render; colour: Ivory
- 16 Reconstituted stone cill [colour: Portland]
- 25 PPC aluminium coping; colour: Grey (RAL 7015)
- 26 UPVC gutters & down pipes; colour: Black (Type 1); Grey - RAL 7015 (Type 3,7,8). Fascia & soffit board; colour: White (Type 1); Grey - RAL 7015 (Type 3,7,8)
- 28 Rain water hopper colour to match upvc rain water goods
- 41 High performance triple glazed timber window; design to match house type; colour: Grey (RAL 7015)
- 43 double glazed curtain wall system, colour; Grey RAL 7015, with look-a-like glazed spandrel panels
- 51 Louvred doors to refuse and cycle stores; colour: Grey (RAL 7015) to match windows and doors
- 51 Louvred doors to refuse and cycle stores; colour: Grey (RAL 7015) to match windows and doors
- 63 Painted GMS balconies, colour: Grey (RAL 7015) with toughened glass balustrade & s/steel handrails
- 65 Flat roof entrance canopy; style to match dwelling type; colour to match windows and doors



SV Sleeve Vent
AB Air brick (MVHR/ MEV intake/ extract)

WILLMOTT DIXON HOUSING REVIEWED

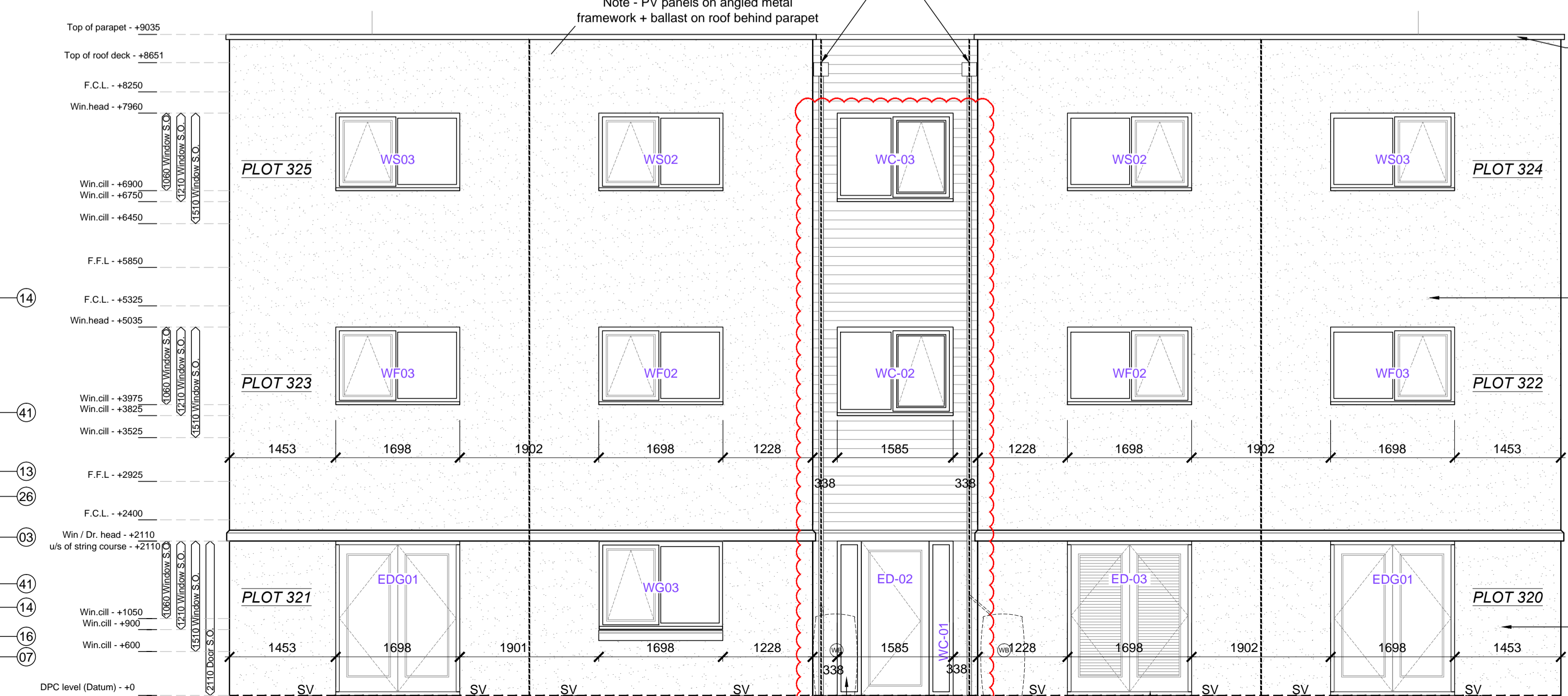
PRELIMINARY	STATUS
FOR COMMENT	A
FOR CONSTRUCTION	B
SIGNED	C
DATE	



REFERENCE PLAN
SCALE = 1:2500



Side 2 Elevation



Rear Elevation

01-04-15	F	Door and window changes as required. IM/CL
29-01-15	E	Drawing updated in line with latest WDH comments. Window locations amended to comply with ADR Part B. Movement joint note added as clouded; CL/RS
05-09-14	D	Drawing updated in line with WDH received comments; MR/JW
02-10-13	C	Win. schedule updated; win. ref. amended; plot no.s added. JW/DGH

date	rev	revision/author/checker
------	-----	-------------------------

purpose of issue
CONSTRUCTION

project
BICESTER ECO TOWN EXEMPLAR SITE PHASE 1

drawing
FLAT ELEVATIONS PLOTS 320 - 325

drawing no	rev
AA2699C/4.1/211	F
drawn	checked
ILA	MDB
scale @ A1 1:50	date
	DEC 2012

PRP Architects ©
10 Lindsey Street
Smithfield
London
EC1A 9RP
T +44 (0)20 7653 1200
F +44 (0)20 7653 1201
lon.prp@prparchitects.co.uk

notes

- The contractor is responsible for checking dimensions, tolerances and references. Any discrepancy to be verified with the Architect before proceeding with the works.
- Where an item is covered by drawings to different scales the larger scale drawing is to be worked to.
- Do not scale drawing. Figured dimensions to be worked to in all cases.

CDM Regulations 2007

ALL current drawings and specifications for the project must be read in conjunction with the Designer's Hazard and Environmental Assessment Record.

NOTES:

All drawings to be read in conjunction with reference key & CSH notes drawing: AA2699C/4.1/295

Refer to dwgs AA2699C/ 4.1/ 100 - 019 for Block Plan Setting Out

Refer to dwgs AA2699C/4.1/311-1; AA2699C/4.1/311-2; AA2699C/4.1/311-3; AA2699C/4.1/311-4; for GA's

Refer to dwgs AA2699C/ 6.1/ 300 series drawings for balcony details

PV Panels are shown as indicative only. Please refer to specialist suppliers detail

Supply / Extract termination indicated on gable walls to be via 225 x 150mm airbrick; Colour: to match adjacent surface.

SV - Sleeve vents numbers/ locations indicative - refer to notes on sub structure dwgs AA2699C/ 4.1/ 99 - 109

All movement joints TBC by SE

Where indicated, RWP's to be located 327.5mm (one and a half bricks) from edge of building, or on party wall line, unless otherwise dimensioned