

WILLMOTT DIXON HOUSING
REVIEWED

PRELIMINARY	STATUS
FOR COMMENT	A
FOR CONSTRUCTION	B
SIGNED	C
DATE	

CDM Regulations 2007

ALL current drawings and specifications for the project must be read in conjunction with the Designer's Hazard and Environmental Assessment Record.

NOTES:

All drawings to be read in conjunction with reference key & CISH notes drawing; AA2699C/4.1/295

Refer to dwgs AA2699C/ 4.1/ 100 - 019 for Block Plan Setting Out

Refer to dwgs AA2699C/ 4.1/ 300 - 333 for GA's

Refer to dwgs AA2699C/ 6.1/ 350 series drawings for canopy details

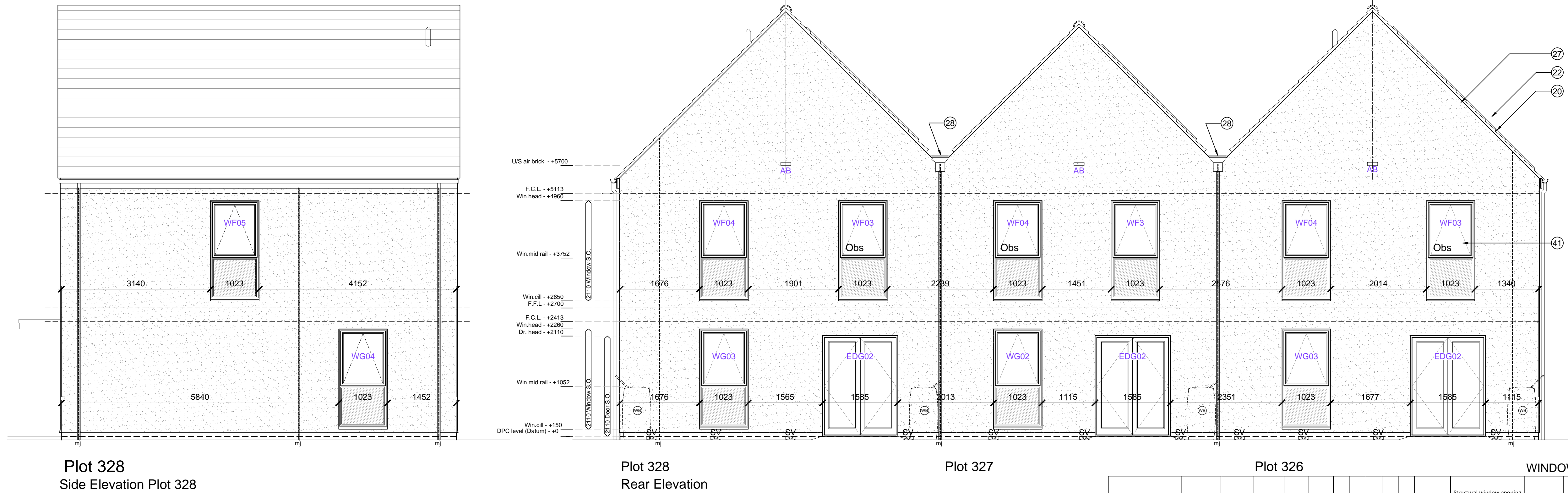
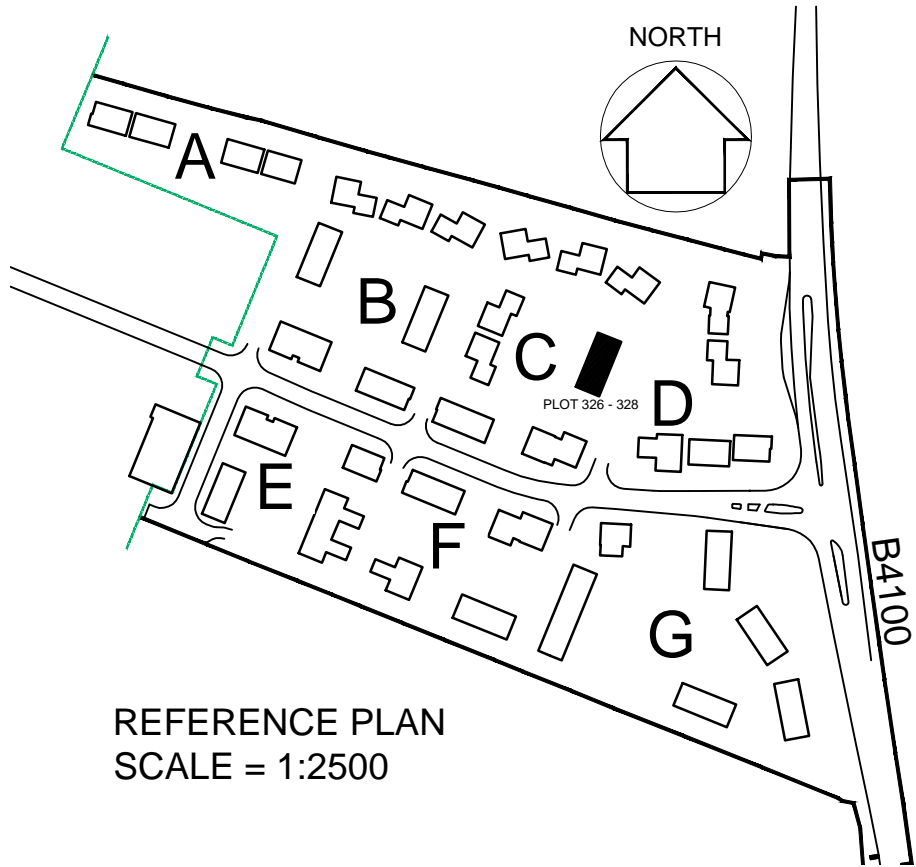
PV Panels are shown as indicative only. Please refer to specialist suppliers detail

Supply / Extract termination indicated on gable walls to be via 225 x 150mm airbrick; Colour: to match adjacent surface.

SV - Sleeve vents numbers/ locations indicative - refer to notes on sub structure dwgs AA2699C/ 4.1/ 99 - 109

All movement joints TBC by SE

Where indicated, RWP's to be located 327.5mm (one and a half bricks) from edge of building, or on party wall line, unless otherwise dimensioned



KEY TO MATERIALS & DETAILS

- 07 2No. course engineering quality brick below DPC. with natural colour mortar joints. [lbstock 'Capital Multi Stock']
- 14 Through colour render; colour: Ivory
- 20 Marley 'Rivendale' composite slate and ridge tile
- 22 South facing roof slope designated for PV array REF AA2699C/1.1/107
- 26 UPVC gutters & down pipes; colour: Black (Type 1); Grey - RAL 7015 (Type 3,7,8). Fascia & soffit board; colour: White (Type 1); Grey - RAL 7015 (Type 3,7,8)
- 27 Clipped verge detail
- 28 Rain water hopper colour to match upvc rain water goods
- 41 High performance triple glazed timber window; design to match house type; colour: Grey (RAL 7015)
- 48 IG doorset GRP (NG range) Ref: D18 [type 3 + 8 dwellings]; Door colour: Black ext. White int.; Frame: tbc
- 64 GRP entrance canopy; style to match dwelling type; colour to match windows and doors
- Obs Denotes obscure glazing to bathroom or WC / Shower
- Denotes opaque glazed window panel; Colour: grey RAL 7015
- SV Sleeve Vent
- AB Air brick (MVHR/ MEV intake/ extract)

Plot 326											WINDOW SCHEDULE [EXTRACT]					
Plots numbers	Dwelling type	Tenure	Elevation type	window number	Door number	Fire egress	Fire rated glass	Safety glass	Obscured Glass	S&D compliance	Structural window opening			Room	Plots with extra window for end of terrace	COMMENTS
											width		Height			
Rev A - 18th Jan 2013																
Rev C - Updated to current drawings 07-02-13																
Rev D - Updated to current drawings 04-04-13																
Rev E - Updated to current drawings 29-04-13																
Rev F - Updated to current drawings; communal windows added 12-09-13																
327	2BAP [x2]	Private	3	WG-01 WG-02 WF-01 WF-02 WF-03 WF-04	EDG-01 EDG-02 	 	 	 	 	 	1023 1023 1585 1023 1023 1023 1023 1023	x x x x x x x x	2110 2110 2110 2110 2110 2110 2110 2110	hall living kitchen/dining kitchen/dining en suite bedroom 1 bedroom 2 bathroom		Sand blasted' glass finish <

27-01-15	J	Drawing updated in line with latest WDH comments, movement joint note added as clouded; CL/RS
05-09-14	H	Drawing updated in line with WDH received comments; MR/JW
03-02-14	G	Front door position to plot 327 adjusted; Wall tag ref.s added; JW/MB
08-10-13	F	Win. schedule updated; win. ref. amended; JW/DGH
26-07-13	E	Roof slate spec updated; Colour to fascia boards and render colour amended; JW/MB
22-07-13	D	Boxed verge detail to gable ends removed; layers frozen; purpose of issue changed to PLANNING; JW/MB
29-04-13	C	Drms & levels added; Window & door ref.s added; Win. schedule added; JW/DGH
04-03-13	B	Patio door position to plot 327 changed; DGH/JW
24-01-13	A	Minor amendments status changed to planning DGH/JW
date	rev	revision/author/checker

purpose of issue

CONSTRUCTION

project

**BICESTER ECO TOWN
EXEMPLAR SITE PHASE 1**

drawing

**ELEVATIONS
PLOTS 326 - 328**

drawing no

AA2699C/4.1/212

rev

J

drawn

ILA

checked

MDB

scale @ A1 1:50

date

DEC 2012

PRP Architects ©
10 Lindsey Street
Smithfield
London
EC1A 9RP
T +44 (0)20 7653 1200
F +44 (0)20 7653 1201
lon.prp@prparchitects.co.uk

PRP