

WILLMOTT DIXON HOUSING
REVIEWED

PRELIMINARY	STATUS
FOR COMMENT	A
FOR CONSTRUCTION	B
SIGNED	C
DATE	

notes

- The contractor is responsible for checking dimensions, tolerances and references. Any discrepancy to be verified with the Architect before proceeding with the works.
- Where an item is covered by drawings to different scales the larger scale drawing is to be worked to.
- Do not scale drawing. Figured dimensions to be worked to in all cases.

CDM Regulations 2007

ALL current drawings and specifications for the project must be read in conjunction with the Designer's Hazard and Environmental Assessment Record.

NOTES:

All drawings to be read in conjunction with reference key & CISH notes drawing: AA2699C/4.1/295

Refer to dwgs AA2699C/ 4.1/ 100 - 019 for Block Plan Setting Out

Refer to dwgs AA2699C/ 4.1/ 300 - 333 for GA's

Refer to dwgs AA2699C/ 6.1/ 350 series drawings for canopy details

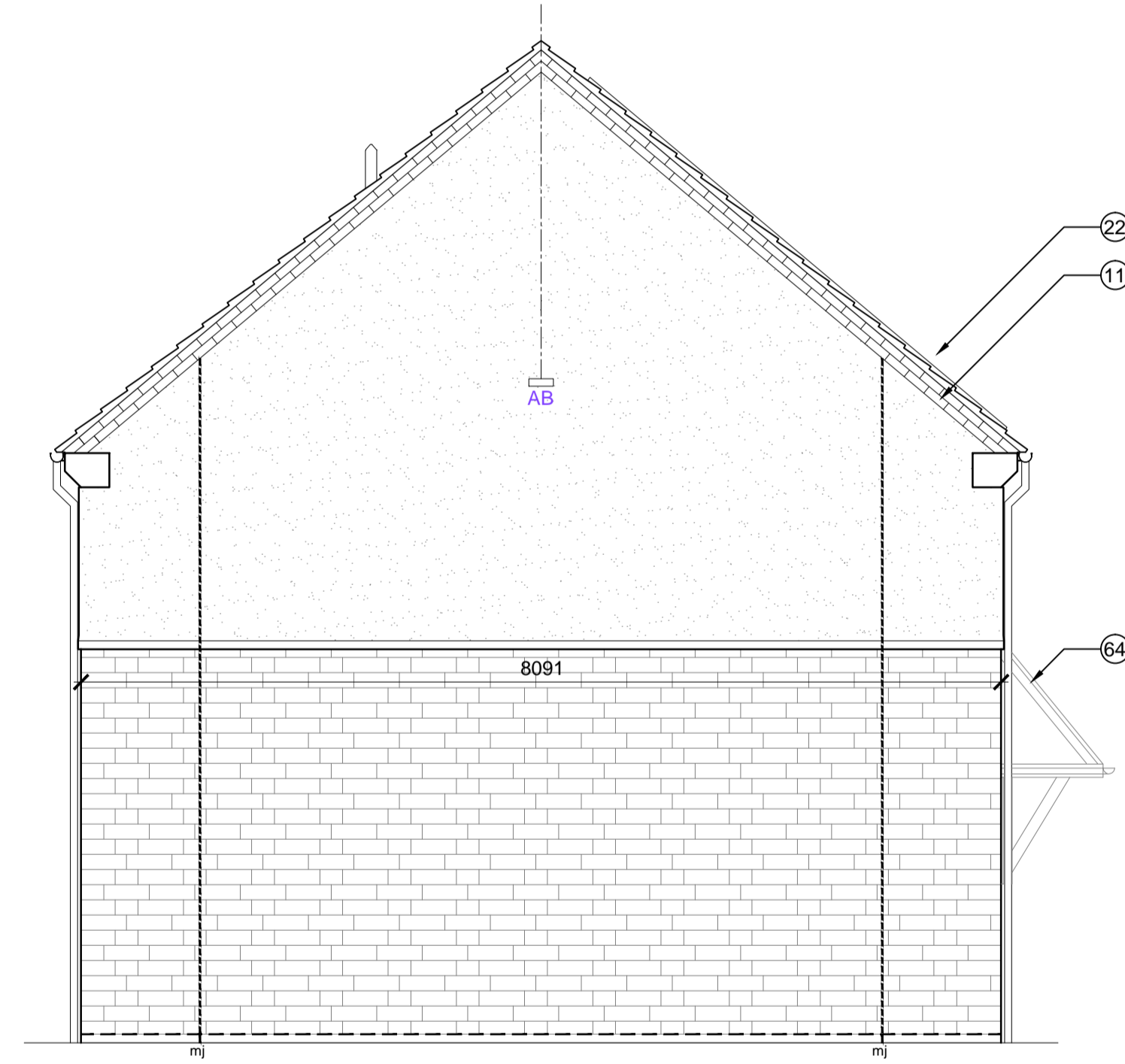
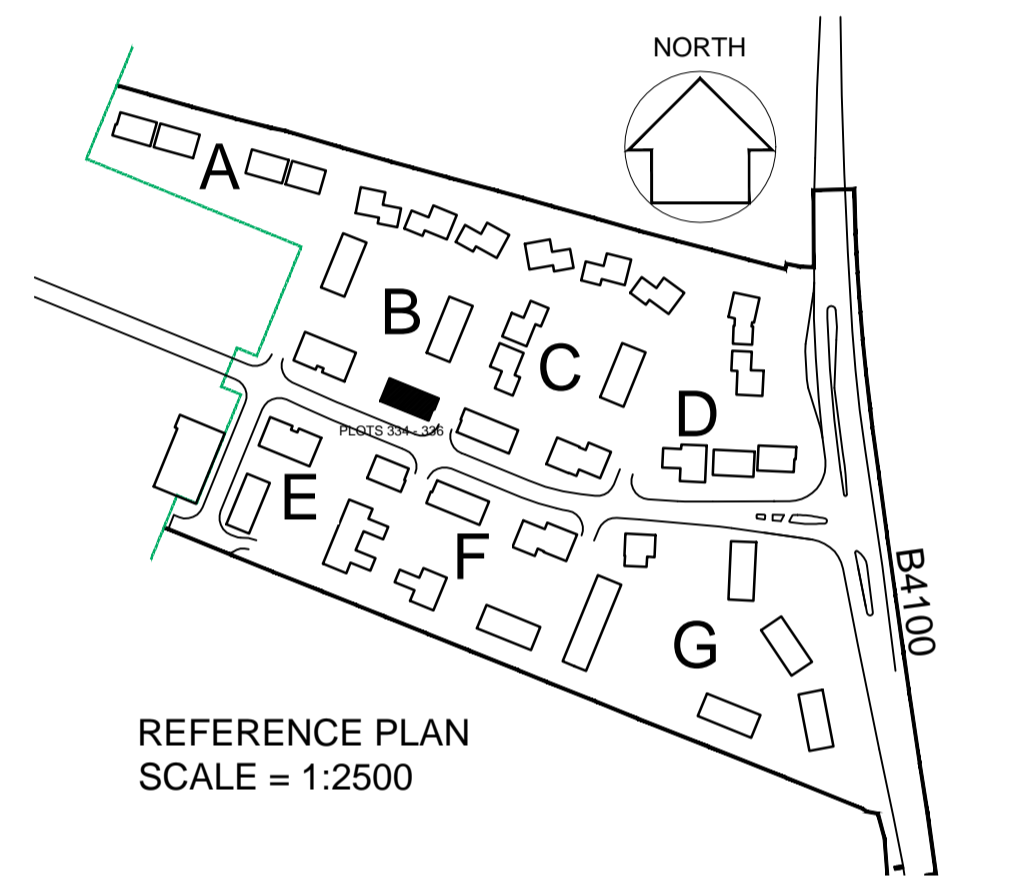
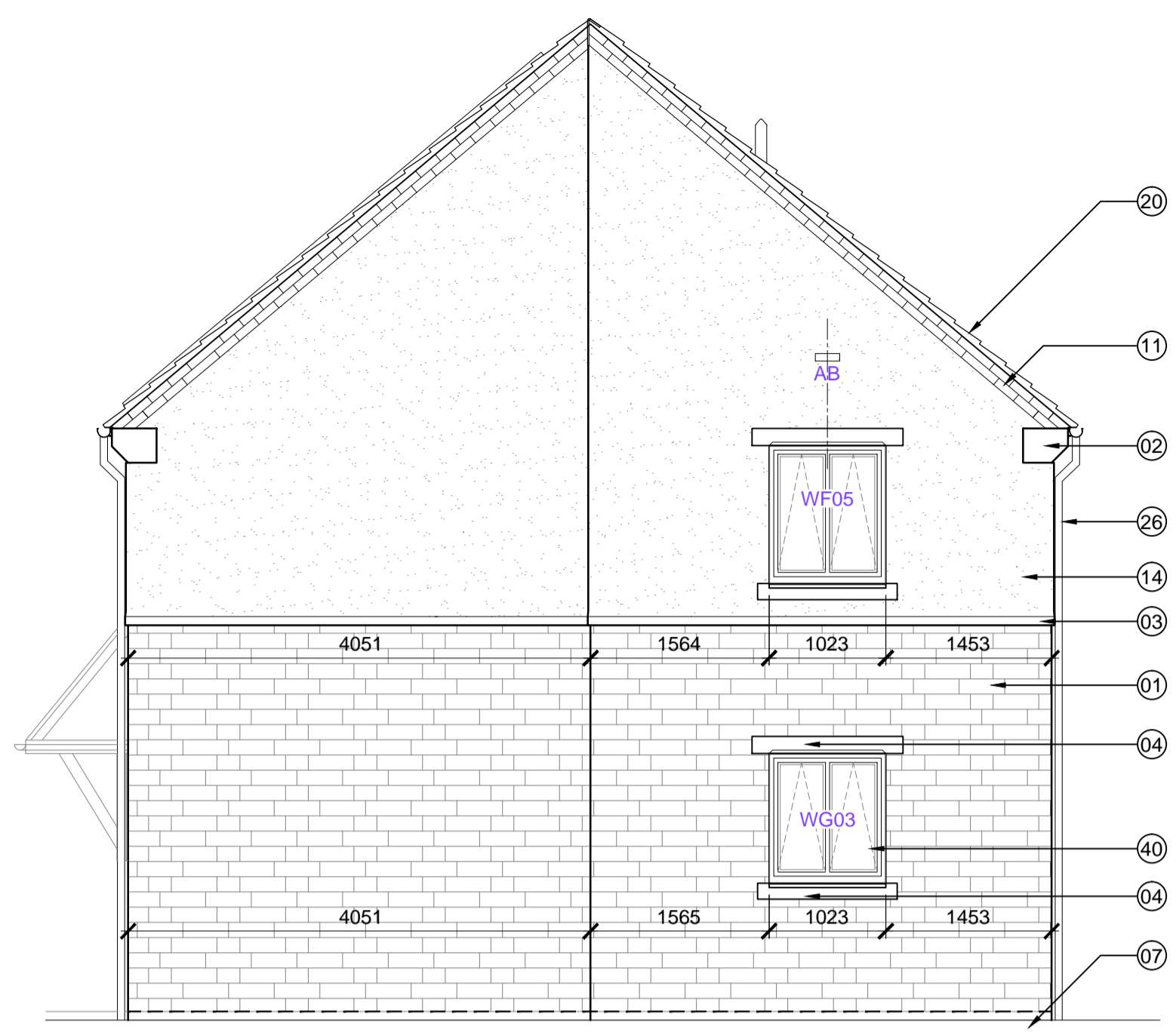
PV Panels are shown as indicative only. Please refer to specialist suppliers detail

Supply / Extract termination indicated on gable walls to be via 225 x 150mm airbrick; Colour: to match adjacent surface.

SV - Sleeve vents numbers/ locations indicative - refer to notes on sub structure dwgs AA2699C/ 4.1/ 99 - 109

All movement joints TBC by SE

Where indicated, RWP's to be located 327.5mm (one and a half bricks) from edge of building, or on party wall line, unless otherwise dimensioned



26-01-15 G Drawing updated in line with latest WDH comments, movement joint note added as clouded, CLURS

05-09-14 F Drawing updated in line with WDH received comments; MR/UW

09-10-13 E Drawing returned to stage E condition; JW/DGH

27-11-13 D RWP's added to front elevation; PLANNING; JW/MD

02-10-13 C Win. schedule updated; JW/DGH

29-04-13 B Dims & levels added; Window & door ref.s added; Win. schedule added; JW/DGH

22-01-13 A Minor amendments status changed to planning DGH/JW

date	rev	revision/author/checker
------	-----	-------------------------

purpose of issue
CONSTRUCTION

project
BICESTER ECO TOWN EXEMPLAR SITE PHASE 1

drawing
ELEVATIONS PLOTS 334 - 336

drawing no
AA2699C/4.1/214

rev
G

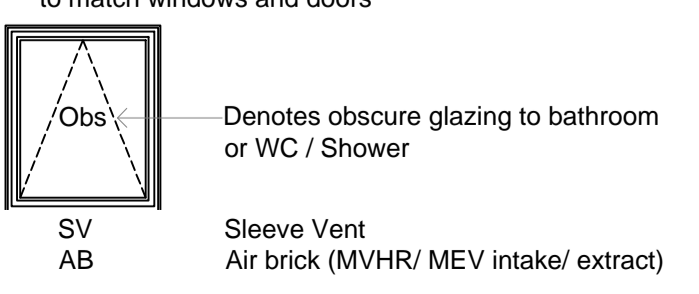
drawn **ILA** checked **MDB**

scale at **A1 1:50** date **DEC 2012**

PRP Architects Ltd
10 Lindsey Street
Smithfield
London
EC1A 9EP
T +44 (0)20 7653 1200
F +44 (0)20 7653 1201
lon.prp@prparchitects.co.uk

KEY TO MATERIALS & DETAILS

- 05 Face brickwork - Istock 'Capital Multi Stock'; laid stretcher bond with natural colour bucket handle mortar joints.
- 06 Face brickwork plinth; type / colour: Istock 'Capital Multi Stock'; with natural colour bucket handle mortar joints.
- 07 2No. course engineering quality brick below DPC, with natural colour mortar joints. [Istock 'Capital Multi Stock']
- 08 Projecting brick header course to divide face brickwork below from render above; type / colour: to match face brickwork
- 09 Brickwork window heads & cant brick cills; type / colour: to match face brickwork
- 10 Brickwork corbel; type / colour: to match face brickwork
- 11 Clipped verge detail. 2No. courses face brickwork laid stretcher bond with natural colour bucket handle mortar joints; brick type / colour: Istock 'Capital Multi Stock'.
- 14 Through colour render; colour: Ivory
- 20 Marley 'Rivendale' composite slate and ridge tile
- 21 Bradstone Cotswold roof tile and ridge tile
- 22 South facing roof slope designated for PV array REF AA2699C/1.1/107
- 26 UPVC gutters & down pipes; colour: Black (Type 1); Grey - RAL 7015 (Type 3,7,8). Fascia & soffit board; colour: White (Type 1); Grey - RAL 7015 (Type 3,7,8)
- 40 High performance triple glazed timber window; design to match house type; colour: White
- 64 GRP entrance canopy; style to match dwelling type; colour to match windows and doors



WINDOW SCHEDULE [EXTRACT]

Plots numbers	Dwelling type	Tenure	Elevation type	Window number	Door number	Fire egress	Fire rated glass	Safety glass	Obscured glass	SBD compliance	Blank panel in look a like glass	Structural window opening			Plots with extra window for end of terrace	COMMENTS
												width	Height	Room		
302,305,334,335,336,360,361,360,366	2b4P	Affordable	1	WG-01	EDG-01							1023	2110	Hall	Sand blasted glass finish	
				WG-02	EDG-02							1023	1135	Kitchen		
												1585	2110	living		
												1023	1360	living		
												1023	1135	living		
														living		
				WF-01								1360	1435	bedroom 1	334 only	
				WF-02								1360	1435	bedroom 1		
				WF-03								1360	1435	bedroom 2		
				WF-04								1023	1210	bathroom		
				WF-05								1023	1210	bedroom 2	334 only	End of terrace window