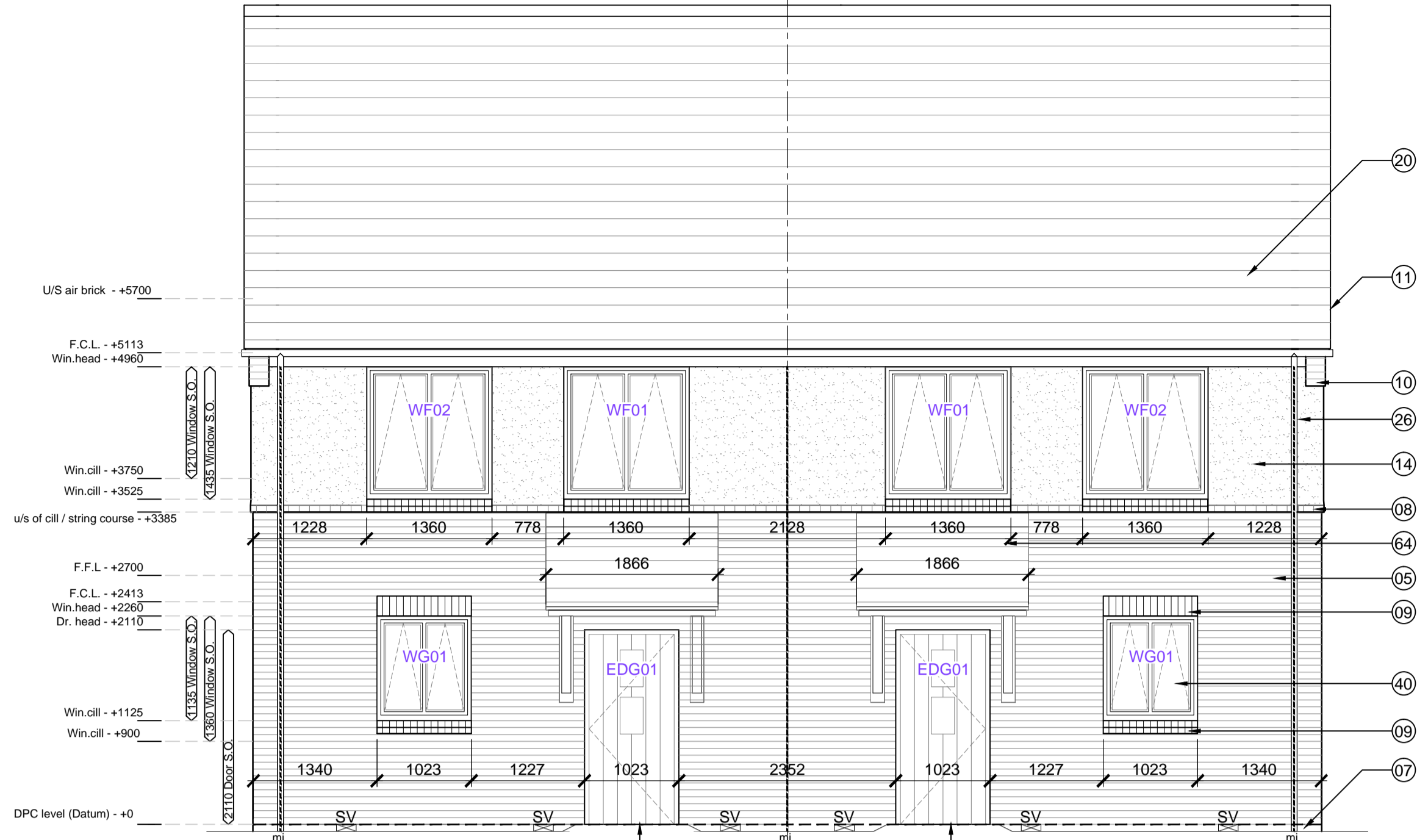
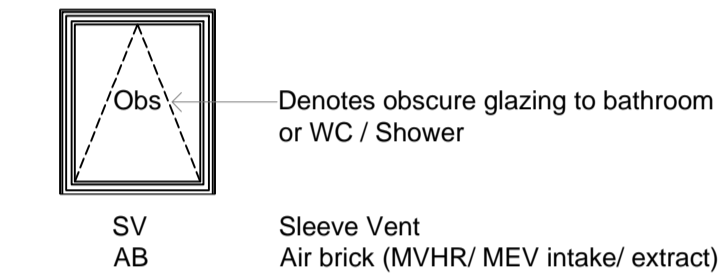
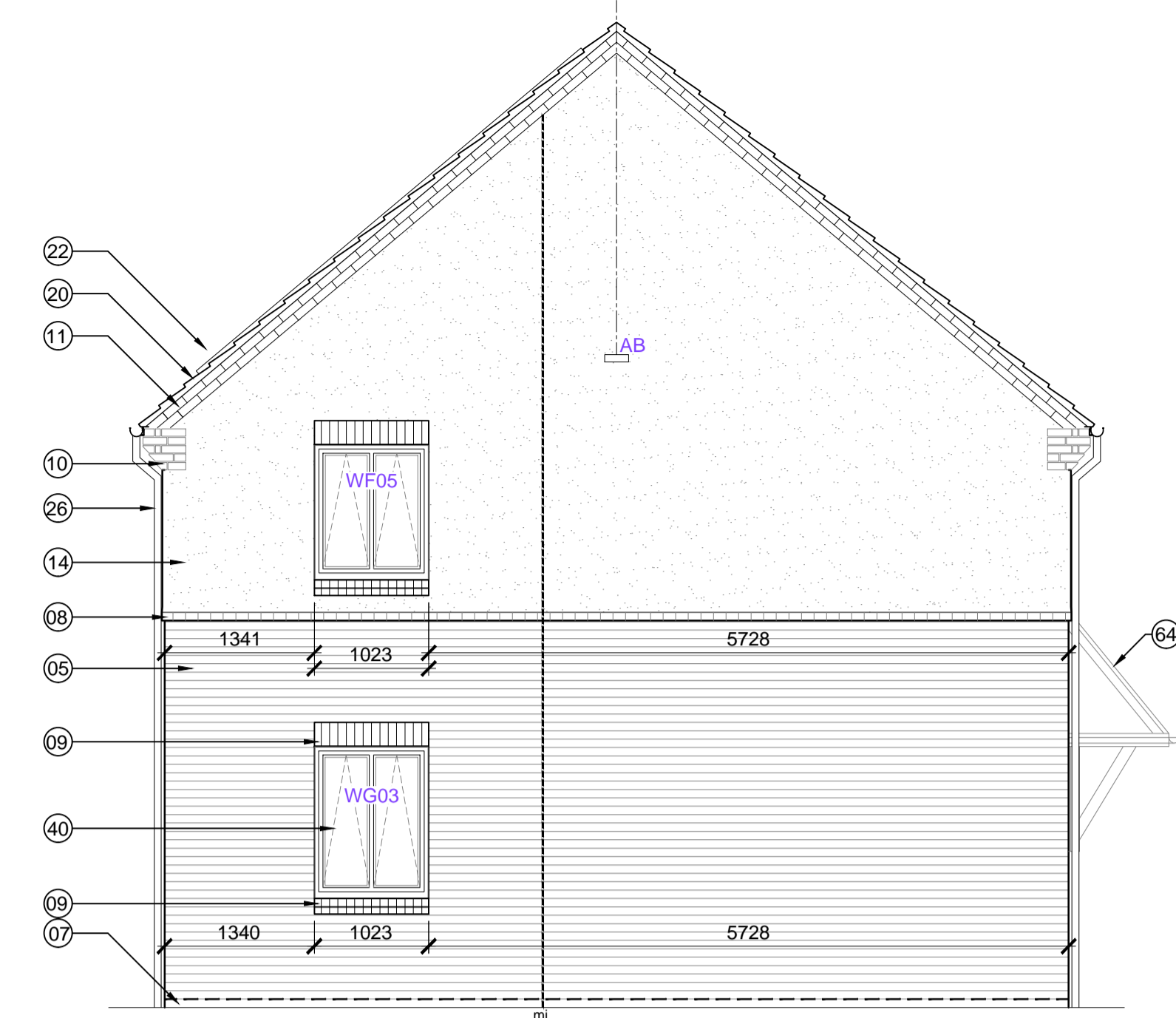


KEY TO MATERIALS & DETAILS

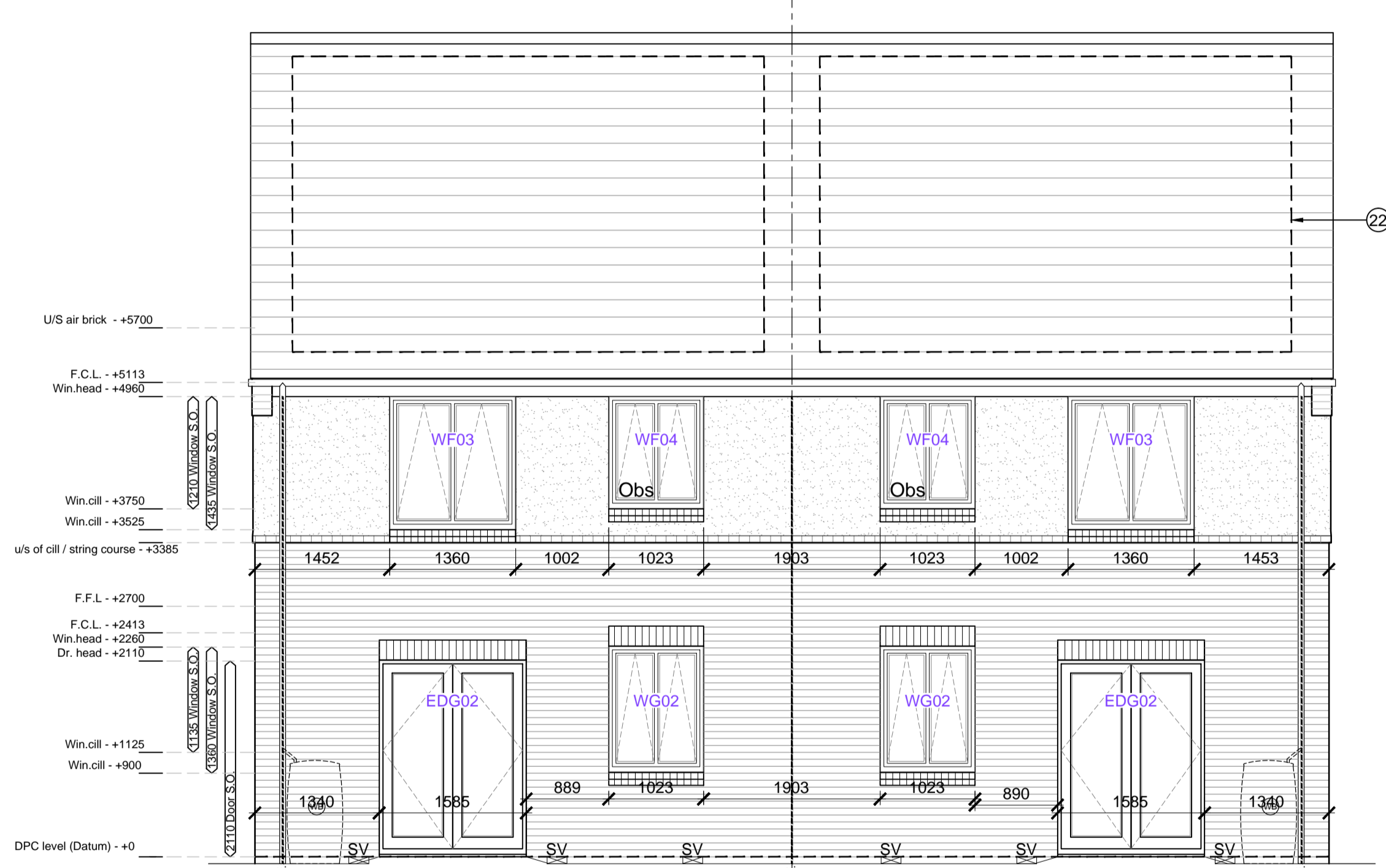
- 05 Face brickwork - Ibstock 'Capital Multi Stock'; laid stretcher bond with natural colour bucket handle mortar joints.
- 07 2No. course engineering quality brick below DPC, with natural colour mortar joints. [Ibstock 'Capital Multi Stock']
- 08 Projecting brick header course to divide face brickwork below from render above; type / colour: to match face brickwork
- 09 Brickwork window heads & cant brick cills; type / colour: to match face brickwork
- 10 Brickwork corbel; type / colour: to match face brickwork
- 11 Clipped verge detail, 2No. courses face brickwork laid stretcher bond with natural colour bucket handle mortar joints; brick type / colour: Ibstock 'Capital Multi Stock'.
- 14 Through colour render, colour: Ivory
- 20 Marley 'Rivendale' composite slate and ridge tile
- 22 South facing roof slope designated for PV array REF AA2699C/1.1/107
- 26 UPVC gutters & down pipes; colour: Black (Type 1); Grey - RAL 7015 (Type 3,7,8). Fascia & soffit board; colour: White (Type 1); Grey - RAL 7015 (Type 3,7,8)
- 40 High performance triple glazed timber window; design to match house type; colour: White
- 47 IG doorset GRP (NG range) Ref: D42 [type 1 dwellings and type 8 bungalows]; Door colour: Black ext.; white int.; Frame: White
- 64 GRP entrance canopy; style to match dwelling type; colour to match windows and doors



Plot 366
Front Elevation

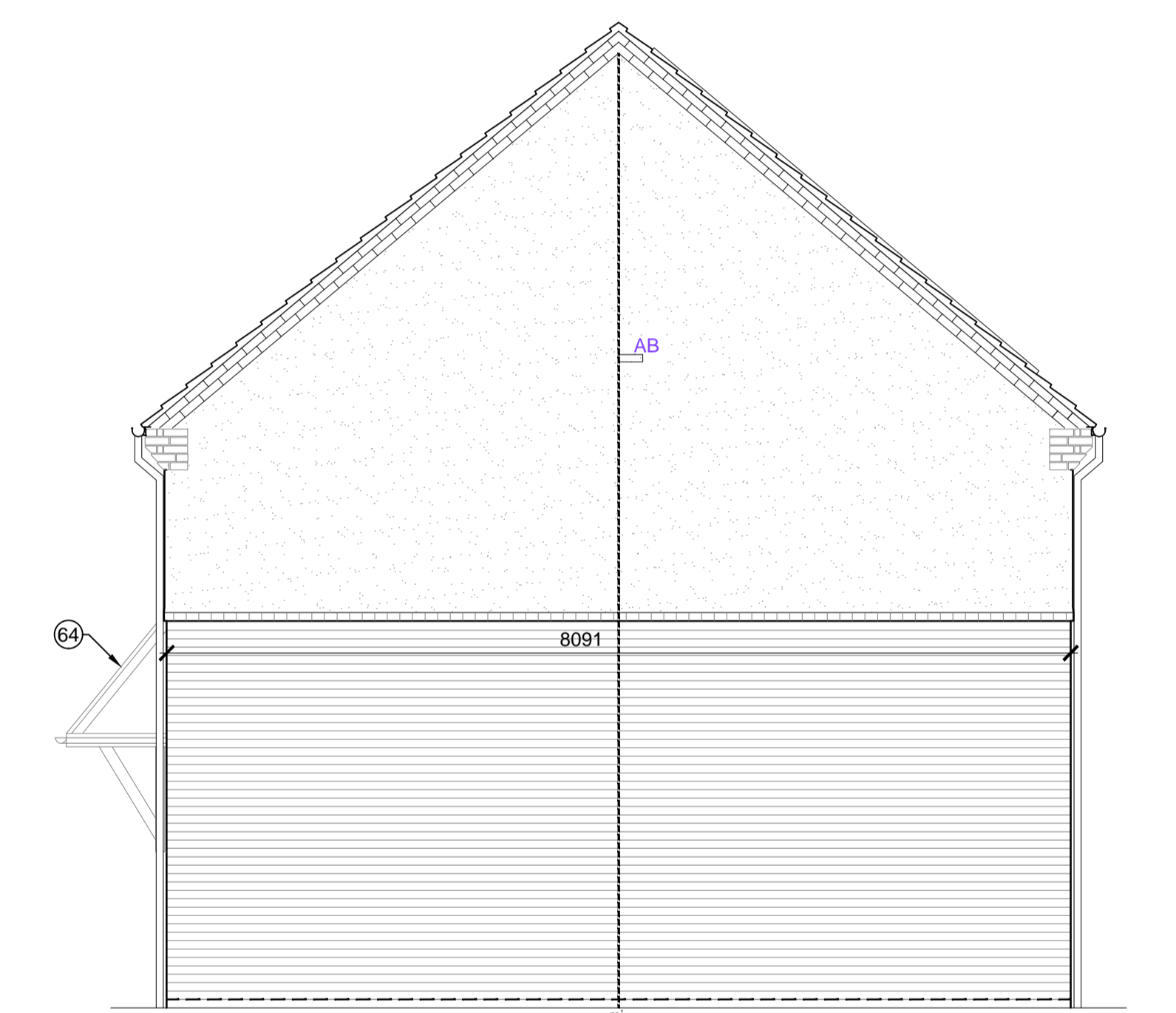
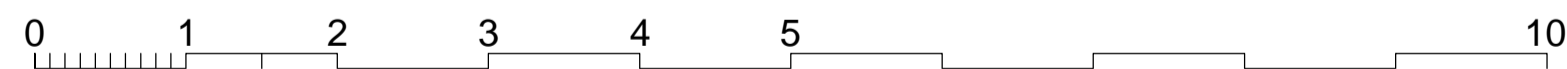


Side Elevation Plot 366



Plot 365
Rear Elevation

TYPE - 1
WALLS - Brick - Ibstock 'Capital Multi Stock'
ROOF - Linear [Slate]



Side Elevation Plot 365

WILLMOTT DIXON HOUSING
REVIEWED

| | |
|------------------|--------|
| PRELIMINARY | STATUS |
| FOR COMMENT | A |
| FOR CONSTRUCTION | B |
| SIGNED | C |
| DATE | |

notes

- The contractor is responsible for checking dimensions, tolerances and references. Any discrepancy to be verified with the Architect before proceeding with the works.
- Where an item is covered by drawings to different scales the larger scale drawing is to be worked to.
- Do not scale drawing. Figured dimensions to be worked to in all cases.

CDM Regulations 2007

ALL current drawings and specifications for the project must be read in conjunction with the Designer's Hazard and Environmental Assessment Record.

NOTES:

All drawings to be read in conjunction with reference key & CISH notes drawing; AA2699C/4.1/295

Refer to dwgs AA2699C/ 4.1/ 100 - 019 for Block Plan Setting Out

Refer to dwgs AA2699C/ 4.1/ 300 - 333 for GA's

Refer to dwgs AA2699C/ 6.1/ 350 series drawings for canopy details

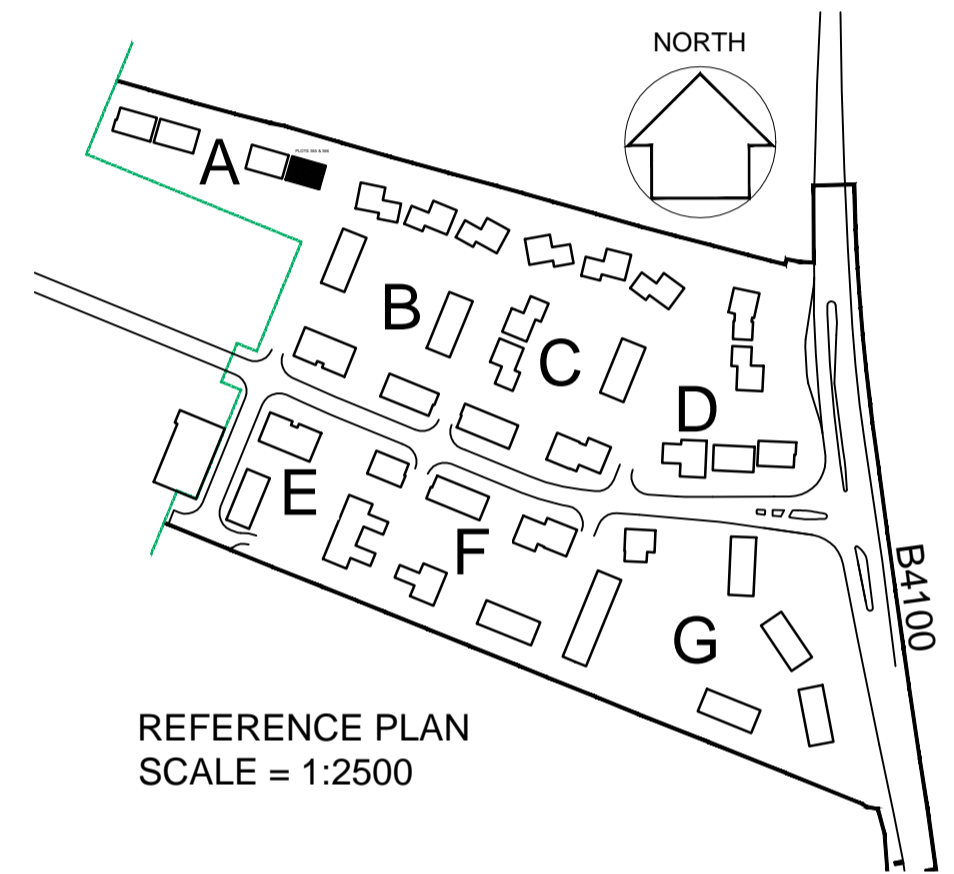
PV Panels are shown as indicative only. Please refer to specialist suppliers detail

Supply / Extract termination indicated on gable walls to be via 225 x 150mm airbrick; Colour: to match adjacent surface.

SV - Sleeve vents numbers/ locations indicative - refer to notes on sub structure dwgs AA2699C/ 4.1/ 99 - 109

All movement joints TBC by SE

Where indicated, RWP's to be located 327.5mm (one and a half bricks) from edge of building, or on party wall line, unless otherwise dimensioned



| | | |
|----------|---|--|
| 26-01-15 | F | Drawing updated in line with latest WDH comments, movement joint note added as clouded. CL/RS |
| 05-09-14 | E | Drawing updated in line with WDH received comments; MR/JW |
| 09-10-13 | D | Win. schedule updated; Gable window WF-05 lowered to correspond with other window head heights; JW/DGH |
| 25-09-13 | C | Wall material label corrected; layers frozen Status changed to PLANNING; JW/DGH |
| 29-04-13 | B | Dims & levels added; Window & door ref.s added; Win. schedule added; JW/DGH |
| 24-01-13 | A | Minor amendments status changed to planning DGH/JW |

| date | rev | revision/author/checker |
|------|-----|-------------------------|
|------|-----|-------------------------|

purpose of issue
CONSTRUCTION

project
BICESTER ECO TOWN EXEMPLAR SITE PHASE 1

drawing
ELEVATIONS PLOTS 365 & 366

| | |
|--------------------------------------|-------------------------|
| drawing no AA2699C/4.1/222 | rev F |
| drawn ILA | checked MDB |
| scale @ A1 1:50 | date DEC 2012 |

PRP Architects ©
10 Lindsey Street
Smithfield
London
EC1A 9EP
T +44 (0)20 7653 1200
F +44 (0)20 7653 1201
lon.prp@prparchitects.co.uk

WINDOW SCHEDULE [EXTRACT]

| Plots numbers | Dwelling type | Tenure | Elevation type | window number | door number | fire-escape | fire-rated glass | safety glass | Obscured glass | SBD compliance | Blank panel in look alike glass | Structural window opening | | Room | Plots with extra window for end of terrace | COMMENTS |
|---|---------------|------------|----------------|---------------|-------------|-------------|------------------|--------------|----------------|----------------|---------------------------------|---------------------------|--------|-----------|--|---------------------------|
| | | | | | | | | | | | | width | Height | | | |
| 302, 305, 334, 335, 336, 360, 361, 365, 366 | 2b4P | Affordable | 1 | WG-01 | EDG-01 | | | | | | | 1023 | 2110 | Hall | | Sand blasted glass finish |
| | | | | WG-02 | EDG-02 | | | | | | | 1023 | 1135 | Kitchen | | |
| | | | | | | | | | | | | 1585 | 2110 | living | | |
| | | | | | | | | | | | | 1023 | 1360 | living | | |
| | | | | WG-03 | | | | | | | | 1023 | 1360 | living | 366 only | |
| | | | | WF-01 | | | | | | | | 1360 | 1435 | bedroom 1 | | |
| | | | | WF-02 | | | | | | | | 1360 | 1435 | bedroom 1 | | |
| | | | | WF-03 | | | | | | | | 1360 | 1435 | bedroom 2 | | |
| | | | | WF-04 | | | | | | | | 1023 | 1210 | bathroom | | |
| | | | | WF-05 | | | | | | | | 1023 | 1210 | bedroom 2 | 366 only | End of terrace window |