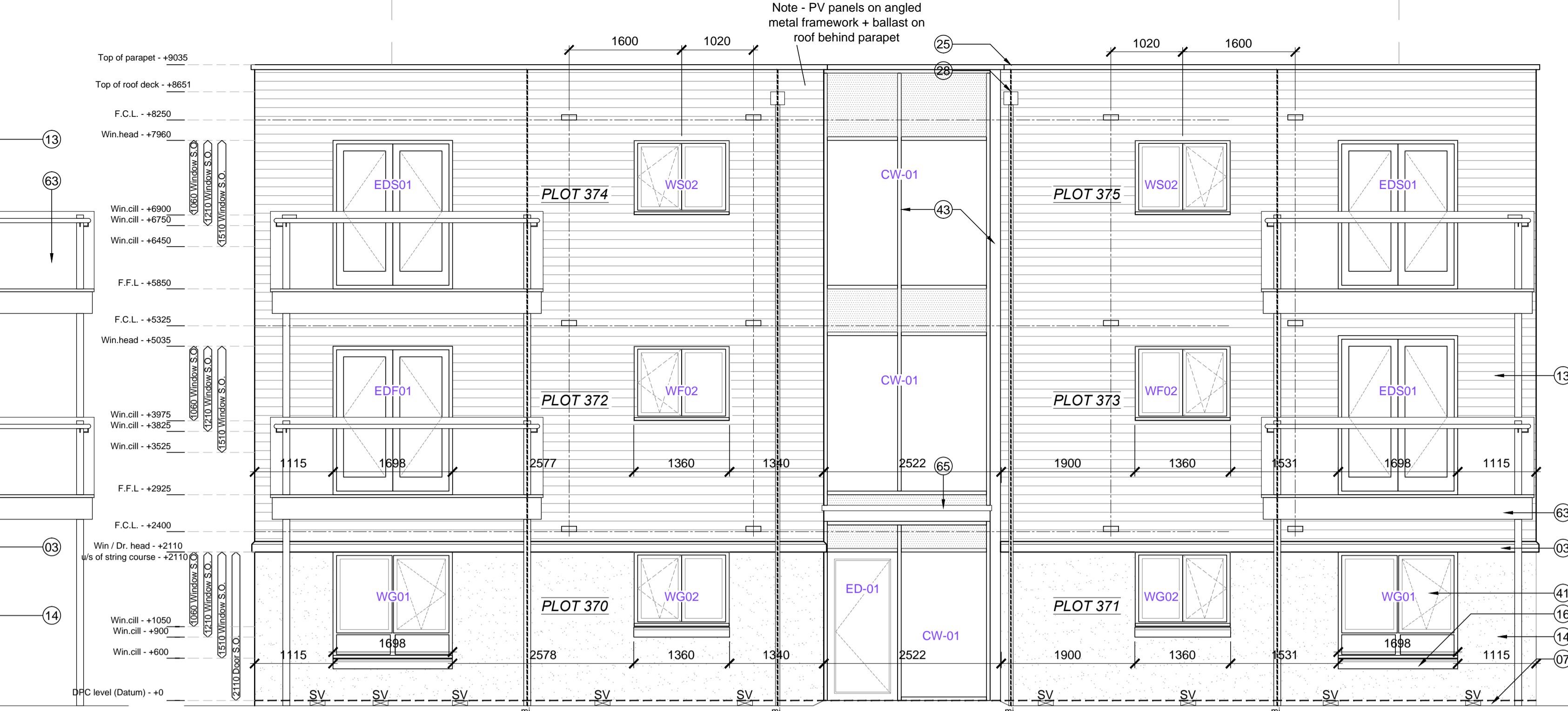
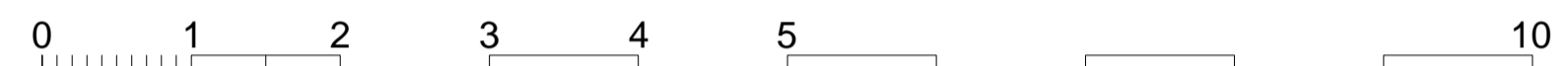


Side Elevation



Front Elevation



Note - PV panels on angled metal framework + ballast on roof behind parapet

notes

- The contractor is responsible for checking dimensions, tolerances and references. Any discrepancy to be verified with the Architect before proceeding with the works.
- Where an item is covered by drawings to different scales the larger scale drawing is to be worked to.
- Do not scale drawing. Figured dimensions to be worked to in all cases.

CDM Regulations 2007
 ALL current drawings and specifications for the project must be read in conjunction with the Designer's Hazard and Environmental Assessment Record.

NOTES:
 All drawings to be read in conjunction with reference key & CSH notes drawing: AA2699C/4.1/295

Refer to dwgs AA2699C/ 4.1/ 100 - 019 for Block Plan Setting Out

Refer to dwgs AA2699C/4.1/324-1; AA2699C/4.1/324-2; AA2699C/4.1/324-3; AA2699C/4.1/324-4; for GA's

Refer to dwgs AA2699C/ 6.1/ 300 series drawings for balcony details
 PV Panels are shown as indicative only. Please refer to specialist suppliers detail

Supply / Extract termination indicated on gable walls to be via 225 x 150mm airbrick; Colour: to match adjacent surface.

SV - Sleeve vents numbers/ locations indicative - refer to notes on sub structure dwgs AA2699C/ 4.1/ 99 - 109

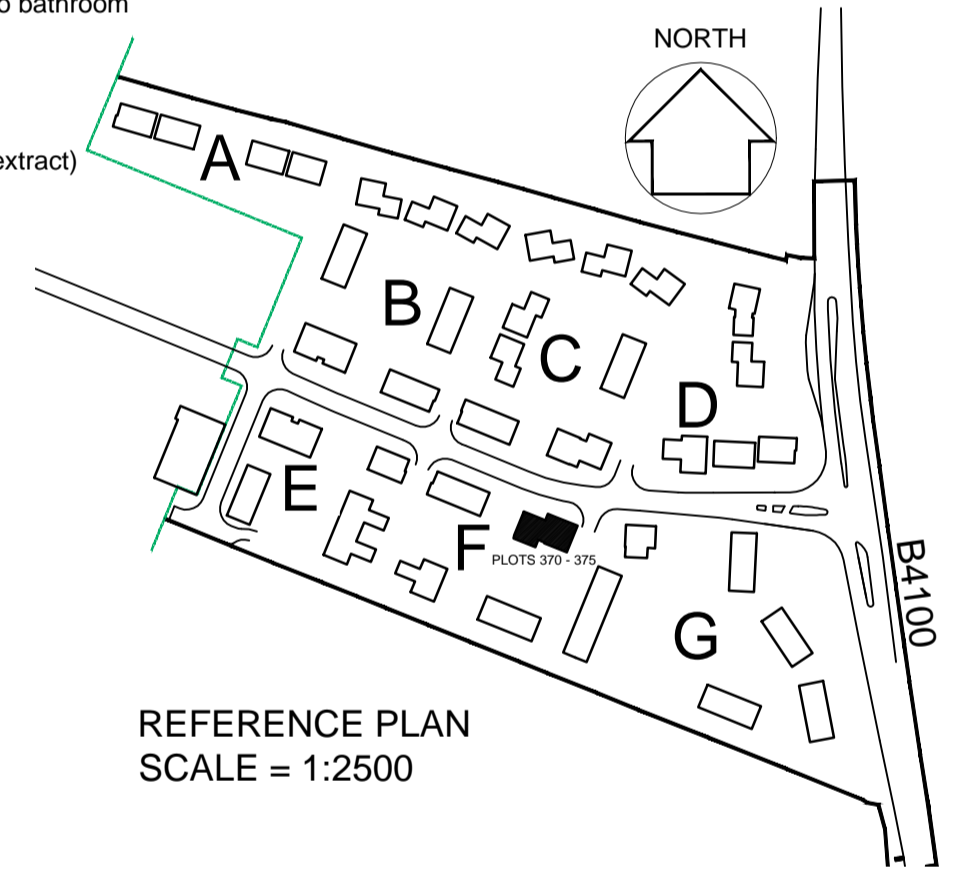
All movement joints TBC by SE
 Where indicated, RWP's to be located 327.5mm (one and a half bricks) from edge of building, or on party wall line, unless otherwise dimensioned

KEY TO MATERIALS & DETAILS

- ③ Projecting reconstituted stone string course [colour: Portland] to divide Beckstone below from render above.
- ⑦ 2No. course engineering quality brick below DPC. with natural colour mortar joints. [Istock 'Capital Multi Stock']
- ⑬ Horizontal timber cladding [Thermowood; with natural untreated finish]
- ⑭ Through colour render; colour: Ivory
- ⑯ Reconstituted stone cill [colour: Portland]
- ⑰ PPC aluminium coping; colour: Grey (RAL 7015)
- ⑳ UPVC gutters & down pipes; colour: Black (Type 1); Grey - RAL 7015 (Type 3,7,8). Fascia & soffit board; colour: White (Type 1); Grey - RAL 7015 (Type 3,7,8)
- ㉑ Rain water hopper colour to match upvc rain water goods
- ㉒ High performance triple glazed timber window; design to match house type; colour: Grey (RAL 7015)
- ㉓ double glazed curtain wall system, colour; Grey RAL 7015, with look-a-like glazed spandrel panels
- ㉔ Louvred doors to refuse and cycle stores; colour: Grey (RAL 7015) to match windows and doors
- ㉕ Louvred doors to refuse and cycle stores; colour: Grey (RAL 7015) to match windows and doors
- ㉖ Painted GMS balconies, colour; Grey (RAL 7015) with toughened glass balustrade & s/steel handrails
- ㉗ Flat roof entrance canopy; style to match dwelling type; colour to match windows and doors
- Obs Denotes obscure glazing to bathroom or WC / Shower
- SV Sleeve Vent
 AB Air brick (MVHR/ MEV intake/ extract)

WILLMOTT DIXON HOUSING
 REVIEWED

PRELIMINARY	STATUS
FOR COMMENT	A
FOR CONSTRUCTION	B
SIGNED	C
DATE	



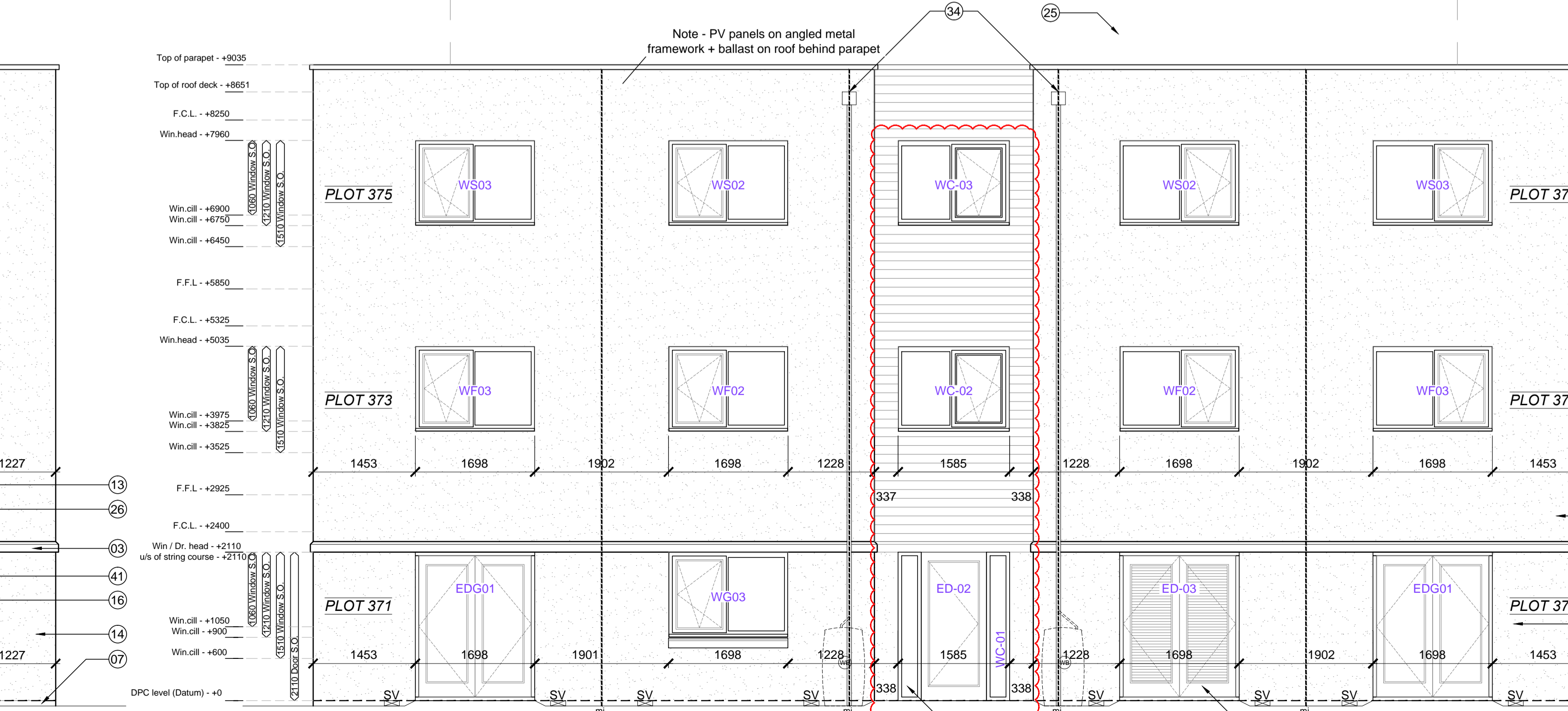
REFERENCE PLAN SCALE = 1:2500

Plots numbers	Dwelling type	Tenure	Elevation type	Window number	Door number	Fire egress	Fire entry glass	Safety glass	Obscured glass	SBD compliance	Blank panel in look a like glass	Structural window opening		Room	Plots with extra window for end of terrace	COMMENTS
												width	Height			
320,370	182P F [A1-A]	Affordable	7-[A1-A]	W*-01 W*-02 W*-03	ED*-01							1698 x 1510 1360 x 1060 1135 x 1210	living bedroom 1 kitchen living	plot 370 only	NOTE: all opening casements to be tilt and turn, opening inwards. To be life time frames compliant opening height to be 2000mm above DPC.	
321,371	283P F [A2-A]	Affordable	7-[A2-A]	W*-01 W*-02 W*-03 W*-04	ED*-01							1698 x 2110 1698 x 1510 1360 x 1060 1698 x 1210 1135 x 1210	living bedroom 1 kitchen bedroom 2 living		NOTE: floor on drawings, G=Ground Floor, F=First, S=Second French windows	
322,323,324,325,372,373,374,375	283P F [A2-B]	Affordable	7-[A2-B]	W*-01 W*-02 W*-03 W*-04 W*-05	ED*-01							1698 x 2110 1360 x 1060 1698 x 1060 1135 x 1510 1135 x 1510	living/dining kitchen bedroom 2 bedroom 1 bedroom 1 living/dining	323, 325, 372 - 375 only 323, 325, 372 - 375 only	to side of app' block to side of app' block	

Plots numbers	Dwelling type	Tenure	Elevation type	Window number	Door number	Fire egress	Fire entry glass	Safety glass	Obscured glass	SBD compliance	Blank panel in look a like glass	Structural window opening		Room	Plots with extra window for end of terrace	COMMENTS
												width	Height			
FLAT BLOCK 3 + 4 Comunal windows	PLOTS 343-348 (Block 3) PLOTS 349-354 (Block 4)		WC-01 WC-02 WC-03	ED-02 ED-03								1585 x 2110 1585 x 1210 1585 x 1210 1698 x 2110	Front door side light Rear door 1st Flr landing 2nd Flr landing Cycle store		*For curtain wall glazing please refer to drawing AA2699C/10.1/ 001	
			ED-01									1585 x 2110	Front door			



Side Elevation



Rear Elevation

- 01-04-15 F Door and window changes as required. IM/CL
- 29-01-15 E Drawing updated in line with latest WDH comments. Window locations amended to comply with ADR Part B. Movement joint note added as clouded; CL/RS
- 05-09-14 D Drawing updated in line with WDH received comments; MRJ/W
- 09-10-13 C Win. schedule updated; Plot numbers added; JW/DGH

date	rev	revision/author/checker

purpose of issue
CONSTRUCTION

project
**BICESTER ECO TOWN
 EXEMPLAR SITE PHASE 1**

drawing
**FLAT ELEVATIONS
 PLOTS 370 - 375**

drawing no	AA2699C/4.1/224	rev	F
drawn	ILA	checked	MDB
scale @ A1	1:50	date	DEC 2012

PRP Architects ©
 10 Lindsey Street
 Smithfield
 London
 EC1A 9RP
 T +44 (0)20 7653 1200
 F +44 (0)20 7653 1201
 lon.prp@prparchitects.co.uk

Drawing Name: L_AA2699C Bicester Eco Town Dwg sheets04_GA04-1_AA2699C-4.1-224.dwg