

**WILLMOTT DIXON HOUSING**  
**REVIEWED**

PRELIMINARY	STATUS
FOR COMMENT	A
FOR CONSTRUCTION	B
SIGNED	C
DATE	

notes

- The contractor is responsible for checking dimensions, tolerances and references. Any discrepancy to be verified with the Architect before proceeding with the works.
- Where an item is covered by drawings to different scales the larger scale drawing is to be worked to.
- Do not scale drawing. Figured dimensions to be worked to in all cases.

CDM Regulations 2007

ALL current drawings and specifications for the project must be read in conjunction with the Designer's Hazard and Environmental Assessment Record.

NOTES:

All drawings to be read in conjunction with reference key & CISH notes drawing, AA2699C/4.1/295

Refer to dwgs AA2699C/ 4.1/ 100 - 019 for Block Plan Setting Out

Refer to dwgs AA2699C/ 4.1/ 300 - 333 for GA's

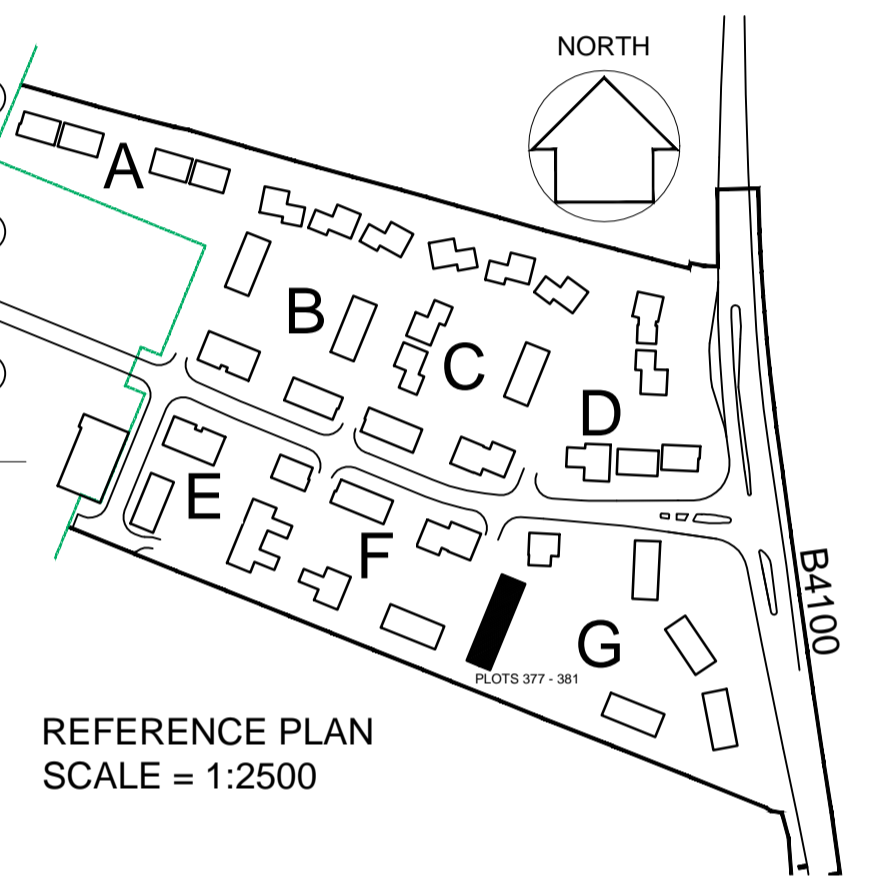
Refer to dwgs AA2699C/ 6.1/ 350 series drawings for canopy details

PV Panels are shown as indicative only. Please refer to specialist suppliers detail

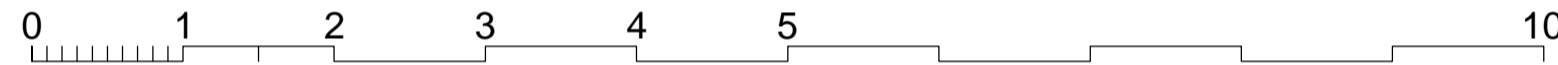
Supply / Extract termination indicated on gable walls to be via 225 x 150mm airbrick; Colour: to match adjacent surface.

SV - Sleeve vents numbers/ locations indicative - refer to notes on sub structure dwgs AA2699C/ 4.1/ 99 - 109

All movement joints TBC by SE

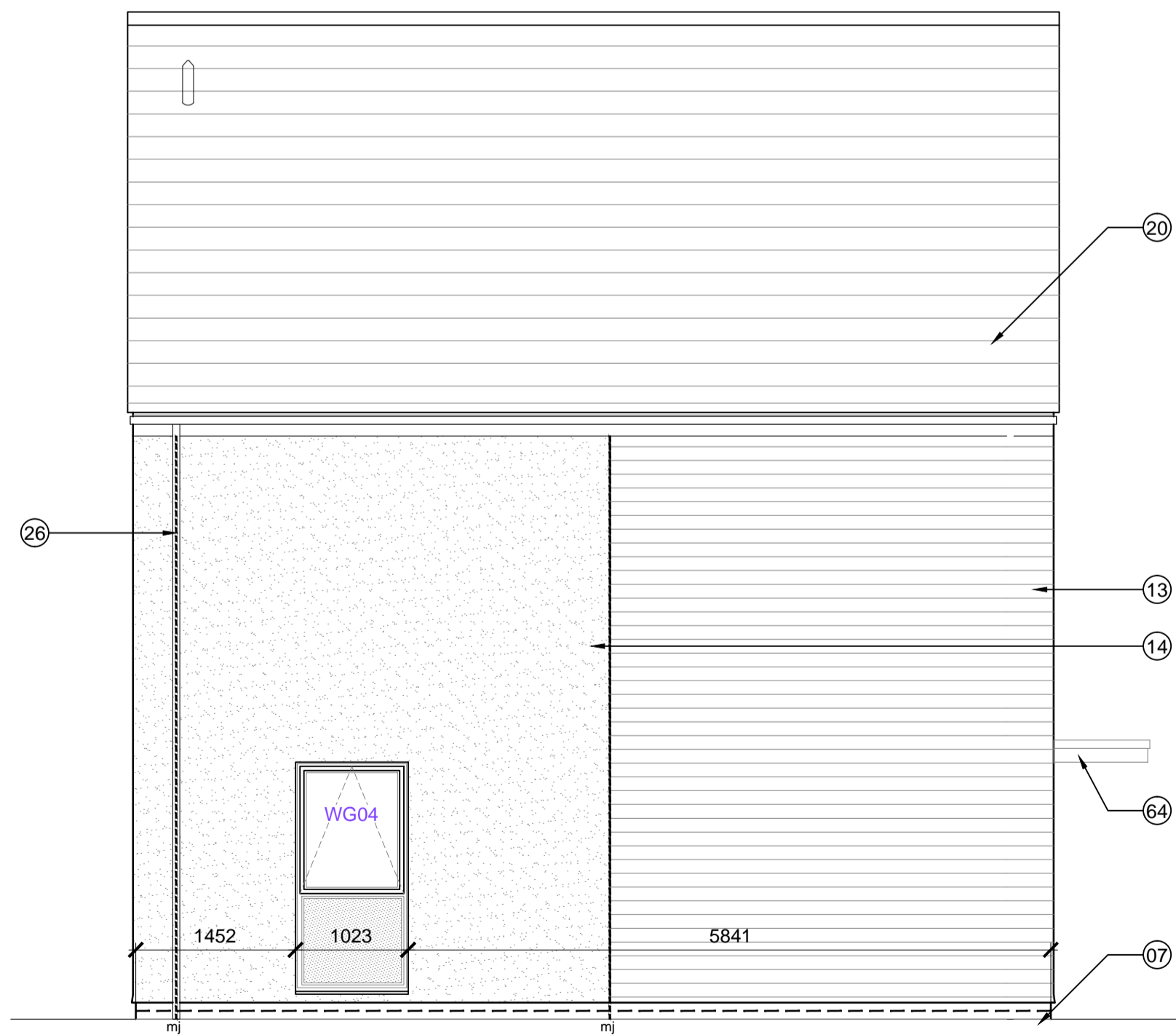
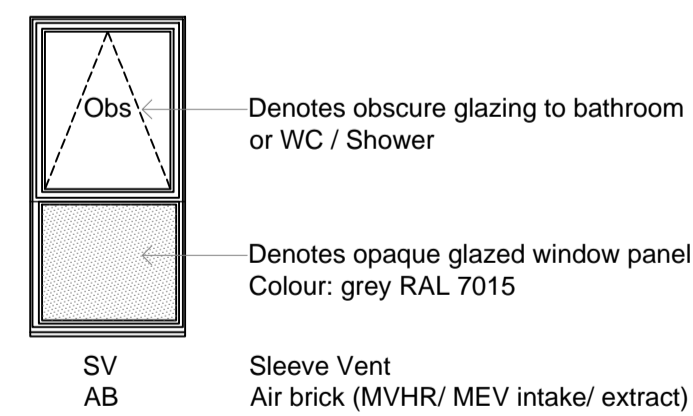


Plot 377  
 Front Elevation  
 TYPE - 3  
 WALLS - 1/2 Render; 1/2 Timber cladding  
 ROOF - Gable [Slate]



KEY TO MATERIALS & DETAILS

- 07 2No. course engineering quality brick below DPC. with natural colour mortar joints. [Ibstock 'Capital Multi Stock']
- 13 Horizontal timber cladding [Thermowood; with natural untreated finish]
- 14 Through colour render; colour: Ivory
- 20 Marley 'Rivendale' composite slate and ridge tile
- 22 South facing roof slope designated for PV array REF AA2699C/1.1/107
- 26 UPVC gutters & down pipes; colour: Black (Type 1); Grey - RAL 7015 (Type 3,7,8). Fascia & soffit board; colour: White (Type 1); Grey - RAL 7015 (Type 3,7,8)
- 27 Clipped verge detail
- 28 Rain water hopper colour to match upvc rain water goods
- 41 High performance triple glazed timber window; design to match house type; colour: Grey (RAL 7015)
- 48 IG doorset GRP (NG range) Ref: D18 [type 3 + 8 dwellings]; Door colour: Black ext. White int.; Frame: tbc
- 64 GRP entrance canopy; style to match dwelling type; colour to match windows and doors



Side Elevation Plot 377

WINDOW SCHEDULE [EXTRACT]

Plots numbers	Dwelling type	Tenure	Elevation type	Window number	Door number	Fire resistant	Fire rated glass	Safety glass	Obscured Glass	SGC compliance	Blank panel in look alike glass	Structural window opening		Room	Plots with extra window for end of terrace	COMMENTS
												width	Height			
378, 379, 380	2b4p	Private	3	WG-01	EDG-01						lower panel	1023	x	2110	hall	French windows
				WG-02	EDG-02						lower panel	1023	x	2110	kitchen/dining	
				WF-01							lower panel	1023	x	2110	living	
				WF-02							lower panel	1023	x	2110	en suite	
				WF-03							lower panel	1023	x	2110	bedroom 1	end of terrace
				WF-04							lower panel	1023	x	2110	bedroom 2	
				WG-03							lower panel	1023	x	2110	bathroom	
326, 328, 377, 381	3BSP	Private	3	WG-01	EDG-01						lower panel	1023	x	2110	hall	Sand blasted 'glass finish'
				WG-02							lower panel	685	x	2110	WC / utility	
				WG-03	EDG-02						lower panel	1023	x	2110	kitchen	French windows
				WG-04							lower panel	1023	x	2110	living	
				WG-05							lower panel	1023	x	2110	living	
				WF-01							lower panel	1023	x	2110	living	end of terrace
				WF-02							lower panel	1023	x	2110	living	
				WF-03							lower panel	1023	x	2110	bedroom 3	end of terrace
				WF-04							lower panel	1023	x	2110	bedroom 2	
				WF-05							lower panel	1023	x	2110	bedroom 1	
				WF-06							lower panel	685	x	2110	bathroom	Plot 381 only

date	rev	revision/author/checker
12-12-14	G	Drawing updated in line with latest WDH comments, movement joint note added; bathroom windows annotated as Obs, as clouded; CLR/S
05-09-14	F	Drawing updated in line with WDH received comments; MR/UW
09-10-13	E	Drawing returned to stage E condition; Win. schedule updated; JWW/DGH
03-09-13	D	Boxed verge detail to gable ends removed; Roof slate spec updated; Colour to fascia boards and render colour amended; layers frozen; purpose of issue changed to PLANNING; JWW/MB
27-06-13	C	position of vertical junction between timber cladding and render and moved; JWW/MB
19-04-13	B	Dims & levels added; Window & door ref.s added; Win. schedule added; JWW/DGH
24-01-13	A	Minor amendments status changed to planning DGH/JWW

purpose of issue  
**CONSTRUCTION**

project  
**BICESTER ECO TOWN  
 EXEMPLAR SITE PHASE 1**

drawing  
**ELEVATIONS  
 PLOTS 377 - 381  
 Sheet 1 of 2**

drawing no  
**AA2699C/4.1/226** rev **G**

drawn **ILA** checked **MDB**

scale at A1 1:50 date **DEC 2012**

PRP Architects ©  
 10 Lindsey Street  
 Smithfield  
 London  
 EC1A 9EP  
 T +44 (0)20 7653 1200  
 F +44 (0)20 7653 1201  
 lon.prp@prparchitects.co.uk