

**WILLMOTT DIXON HOUSING**  
**REVIEWED**

PRELIMINARY	STATUS
FOR COMMENT	A
FOR CONSTRUCTION	B
SIGNED	C
DATE	

notes

- The contractor is responsible for checking dimensions, tolerances and references. Any discrepancy to be verified with the Architect before proceeding with the works.
- Where an item is covered by drawings to different scales the larger scale drawing is to be worked to.
- Do not scale drawing. Figured dimensions to be worked to in all cases.

CDM Regulations 2007

ALL current drawings and specifications for the project must be read in conjunction with the Designer's Hazard and Environmental Assessment Record.

NOTES:

All drawings to be read in conjunction with reference key & CISH notes drawing, AA2699C/4.1/295

Refer to dwgs AA2699C/ 4.1/ 100 - 019 for Block Plan Setting Out

Refer to dwgs AA2699C/ 4.1/ 300 - 333 for GA's

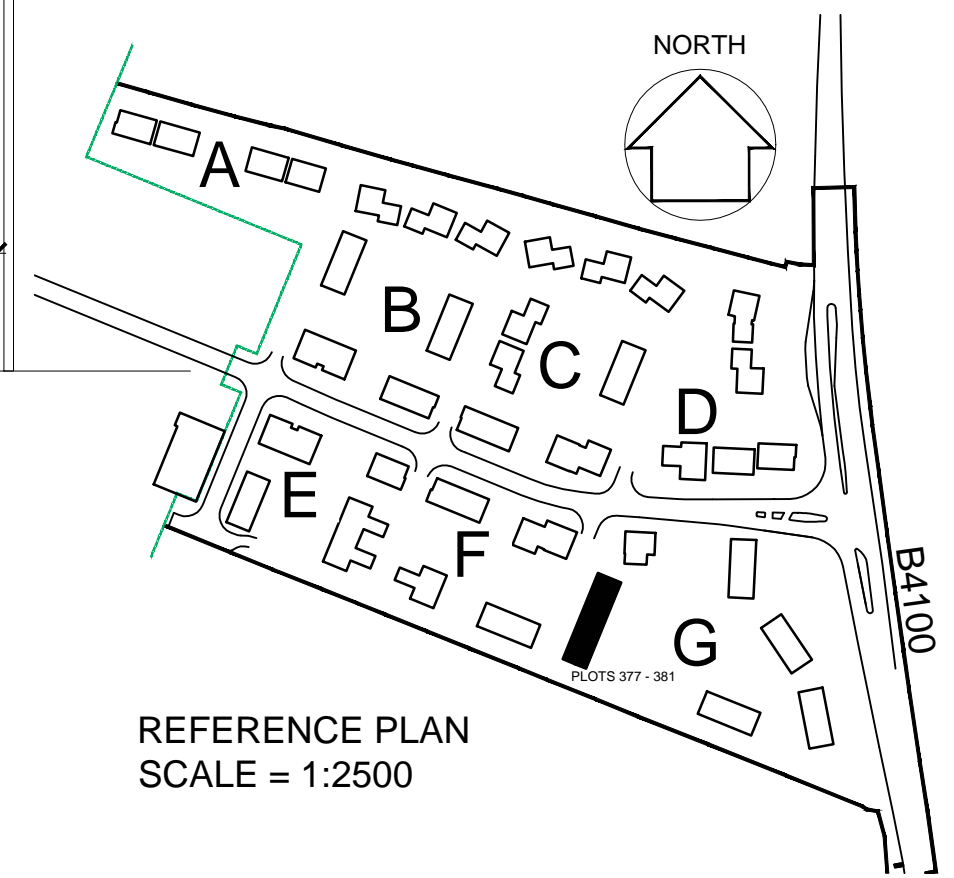
Refer to dwgs AA2699C/ 6.1/ 350 series drawings for canopy details

PV Panels are shown as indicative only. Please refer to specialist suppliers detail

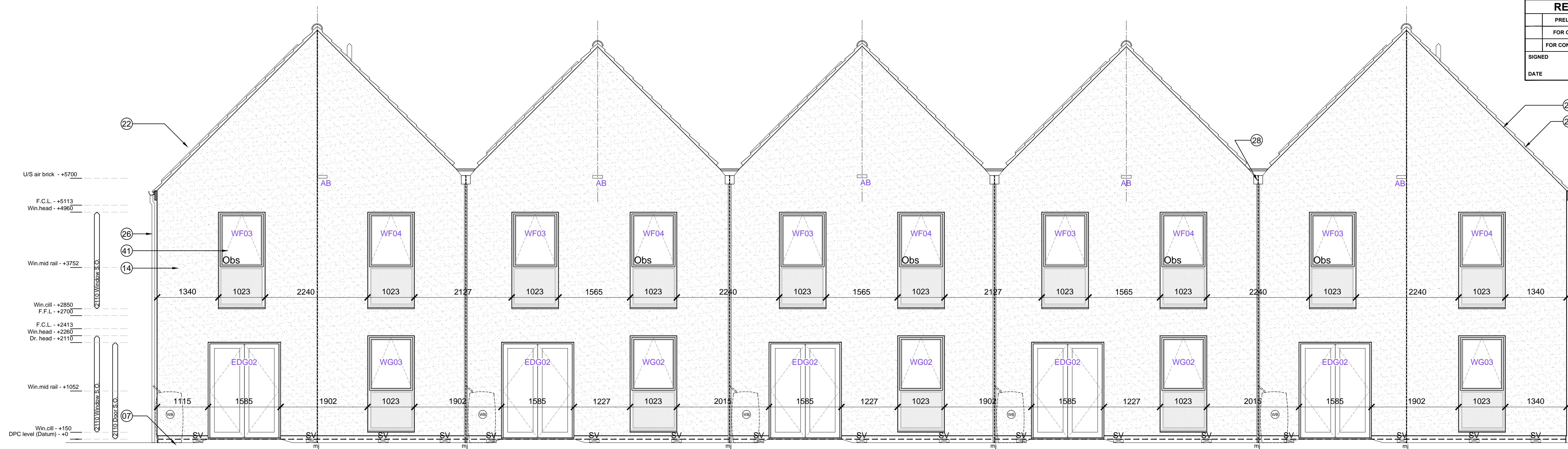
Supply / Extract termination indicated on gable walls to be via 225 x 150mm airbrick; Colour: to match adjacent surface.

SV - Sleeve vents numbers/ locations indicative - refer to notes on sub structure dwgs AA2699C/ 4.1/ 99 - 109

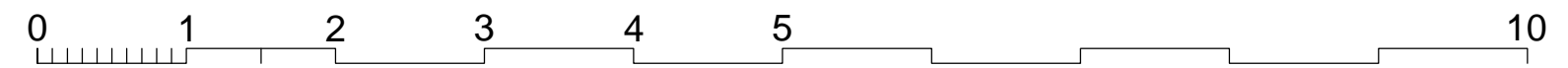
All movement joints TBC by SE



REFERENCE PLAN  
SCALE = 1:2500

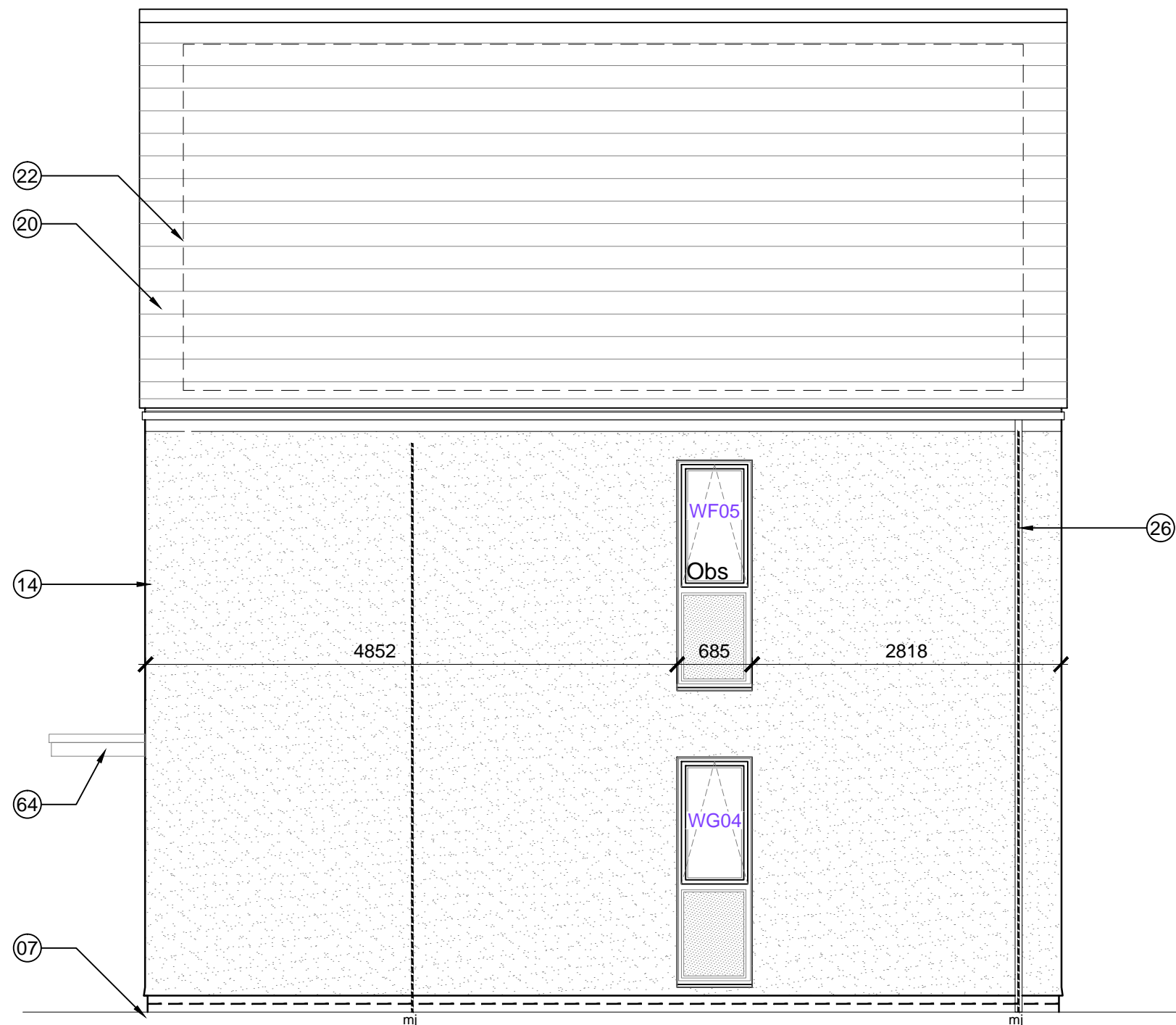
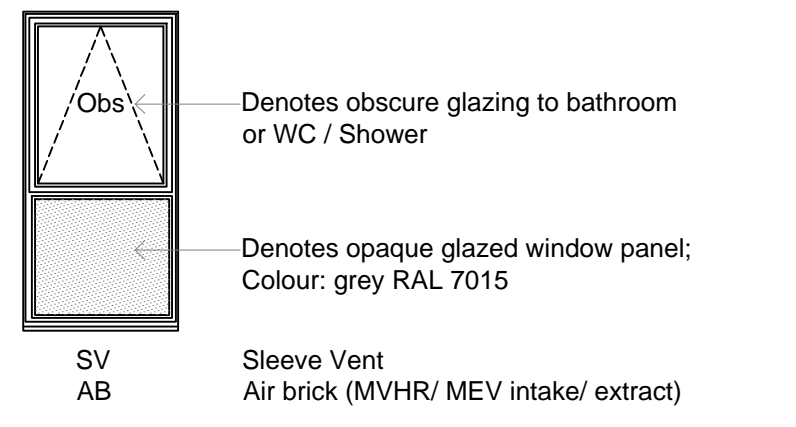


Plot 381  
Rear Elevation  
TYPE - 3  
WALLS - 1/2 Render; 1/2 Timber cladding  
ROOF - Gable [Slate]



KEY TO MATERIALS & DETAILS

- 07 2No. course engineering quality brick below DPC, with natural colour mortar joints. [Ibstock 'Capital Multi Stock']
- 13 Horizontal timber cladding [Thermowood; with natural untreated finish]
- 14 Through colour render; colour: Ivory
- 20 Marley 'Rivendale' composite slate and ridge tile
- 22 South facing roof slope designated for PV array REF AA2699C/1.1/107
- 26 UPVC gutters & down pipes; colour: Black (Type 1); Grey - RAL 7015 (Type 3,7,8), Fascia & soffit board; colour: White (Type 1); Grey - RAL 7015 (Type 3,7,8)
- 27 Clipped verge detail
- 28 Rain water hopper colour to match upvc rain water goods
- 41 High performance triple glazed timber window; design to match house type; colour: Grey (RAL 7015)
- 48 IG doorset GRP (NG range) Ref: D18 [type 3 + 8 dwellings]; Door colour: Black ext. White int.; Frame: tbc
- 64 GRP entrance canopy; style to match dwelling type; colour to match windows and doors



Side Elevation Plot 381

WINDOW SCHEDULE [EXTRACT]

Plots numbers	Dwelling type	Tenure	Elevation type	Window number	Door number	Fire egress	Fire rated glass	Safety glass	Obscured Glass	BBD compliance	Blank panel in lock alike glass	Structural window opening		Room	Plots with extra window for end of terrace	COMMENTS
												width	Height			
378, 379, 380	2bAp	Private	3	WG-01	EDG-01						lower panel	1023	x	2110	hall	
				WG-02	EDG-02						lower panel	1023	x	2110	kitchen/dining	
				WF-01							lower panel	1023	x	2110	living	French windows
				WF-02							lower panel	1023	x	2110	en suite	
				WF-03							lower panel	1023	x	2110	bedroom 1	
				WF-04							lower panel	1023	x	2110	bedroom 2	
				WF-04							lower panel	1023	x	2110	bathroom	
326, 328, 377, 381	8BSP	Private	3	WG-01	EDG-01						lower panel	1023	x	2110	hall	Sand blasted glass finish
				WG-02	EDG-02						lower panel	685	x	2110	WC / utility	
				WG-02							lower panel	1023	x	2110	kitchen	
				WG-03							lower panel	1023	x	2110	living	
				WG-04							lower panel	1023	x	2110	living	
				WG-04							lower panel	1023	x	2110	living	Plot 377 & 381 only
				WG-04							lower panel	685	x	2110	living	end of terrace
				WF-01							lower panel	1023	x	2110	bedroom 3	
				WF-02							lower panel	1023	x	2110	bedroom 2	
				WF-03							lower panel	1023	x	2110	en suite	
				WF-04							lower panel	1023	x	2110	bedroom 1	
				WF-05							lower panel	685	x	2110	bathroom	Plot 381 only

- 12-12-14 F Drawing updated in line with latest WDH comments, movement joint note added as clouded; CL/RS
- 05-09-14 E Drawing updated in line with WDH received comments; MR/JW
- 09-10-13 D Drawing returned to stage E condition; Win. schedule updated; JW/DGH
- 03-09-13 C Boxed verge detail to gable ends removed; Roof slate spec updated; Colour to fascia boards and render colour amended; layers frozen; purpose of issue changed to PLANNING; JW/MB
- 19-04-13 B Dims & levels added; Window & door ref.s added; Win. schedule added; JW/DGH
- 24-01-13 A Minor amendments status changed to planning DGH/JW

date	rev	revision/author/checker
purpose of issue		
CONSTRUCTION		
project		
BICESTER ECO TOWN EXEMPLAR SITE		
drawing		
ELEVATIONS PLOTS 377 - 381 Sheet 2 of 2		
drawing no		rev
AA2699C/4.1/227		F
drawn	ILA	checked
		MDB
scale @ A1	1:50	date
		DEC 2012
PRP Architects © 10 Lindsey Street Smithfield London EC1A 9EP T +44 (0)20 7653 1200 F +44 (0)20 7653 1201 lon.prp@prparchitects.co.uk		